

# 25,880 SF

Industrial Space For Lease



## Prologis Park Seattle 6



646 South Holgate Street  
Seattle, WA 98057 USA

### LOCATION

- IG1-U85 zoning

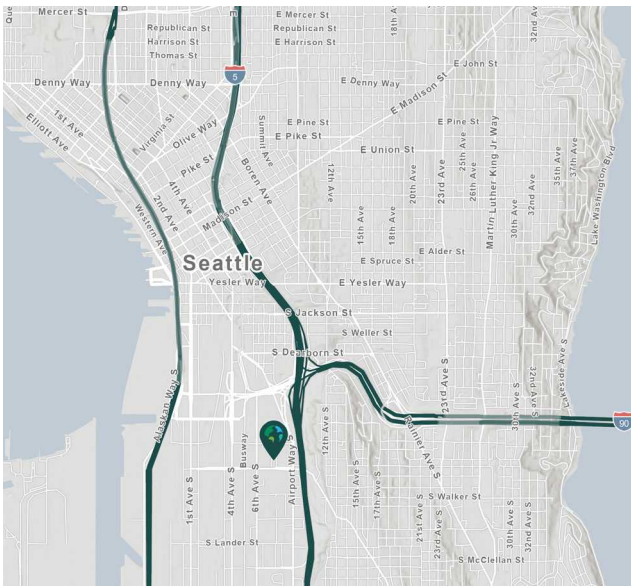
### FACILITY

- Total Available Size: 25,880 SF
- Clear Height: 18'
- Loading: 20 Dock High Doors
- Rare In-City Cross-Dock
- 83,900 SF of Land

### ADVANTAGES AND AMENITIES

- 56 Truck Spots
- Yard Area
- Potential Rail Access

**Your single-source service for efficient move-in and operations: [prologisessentials.com](https://www.prologisessentials.com)**

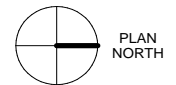
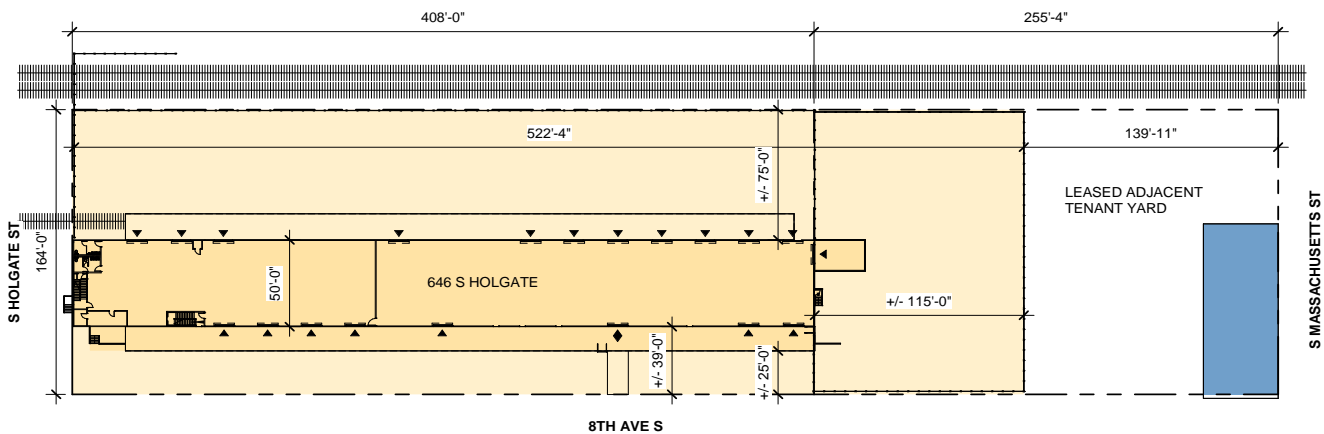
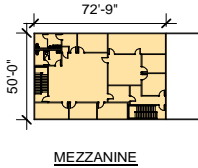


# 25,880 SF

Industrial Space For Lease



## Prologis Park Seattle 6



### NEWMARK

**Newmark**  
Evan Lugar  
evan.lugar@nrmk.com  
ph +1 425 362 1403  
10900 NE 4th St  
Suite 1430  
Bellevue, WA 98004 USA

**Newmark**  
Josh Satterlee  
josh.satterlee@nrmk.com  
ph +1 425 362 1396  
10900 NE 4th St  
Suite 1430  
Bellevue, WA 98004 USA

**Prologis**  
Rick Kolpa  
rkolpa@prologis.com  
ph +1 206 414 7610  
5900 Airport Way S  
Suite 300  
Seattle, WA 98108 USA