

RETAIL FOR LEASE

SOUTH HILL PLAZA



S MERIDIAN

39TH AVE SW

3850 S MERIDIAN, PUYALLUP, WA 98373



WELL ESTABLISHED RETAIL AND PROFESSIONAL CENTER

Located at the major intersection on South Hill of Puyallup and fronting the South Hill Mall. Traffic counts exceeding 60,000 cars per day.

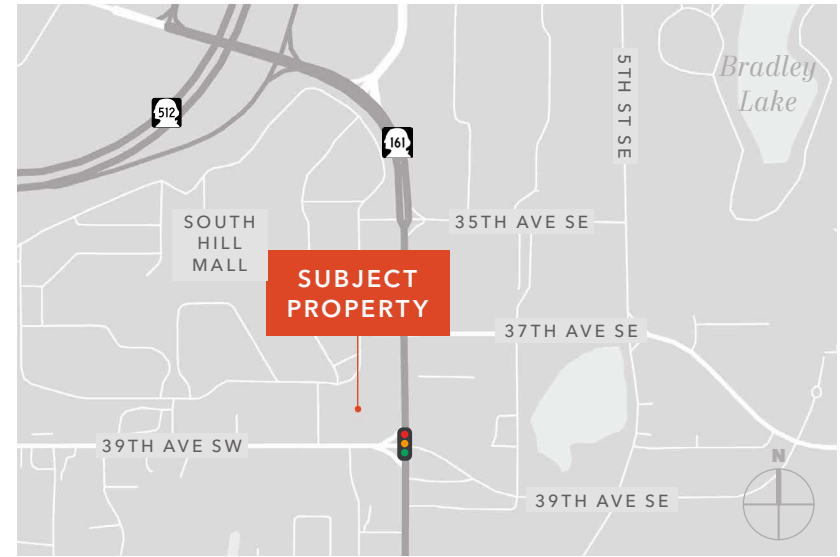


AVAILABLE SF	4,231 SF
LEASE RATE	\$14.00/SF + NNN
LEASE TERM	3 - 5 years or terms acceptable to Landlord
FRONTAGE	S Meridian & 39th Avenue
YEAR BUILT	1989
PARKING	Surface
PARKING RATIO	6/1,000
TRAFFIC COUNT	60,000 VPD on Meridian
ZONING	LMX - Limited Mixed Use

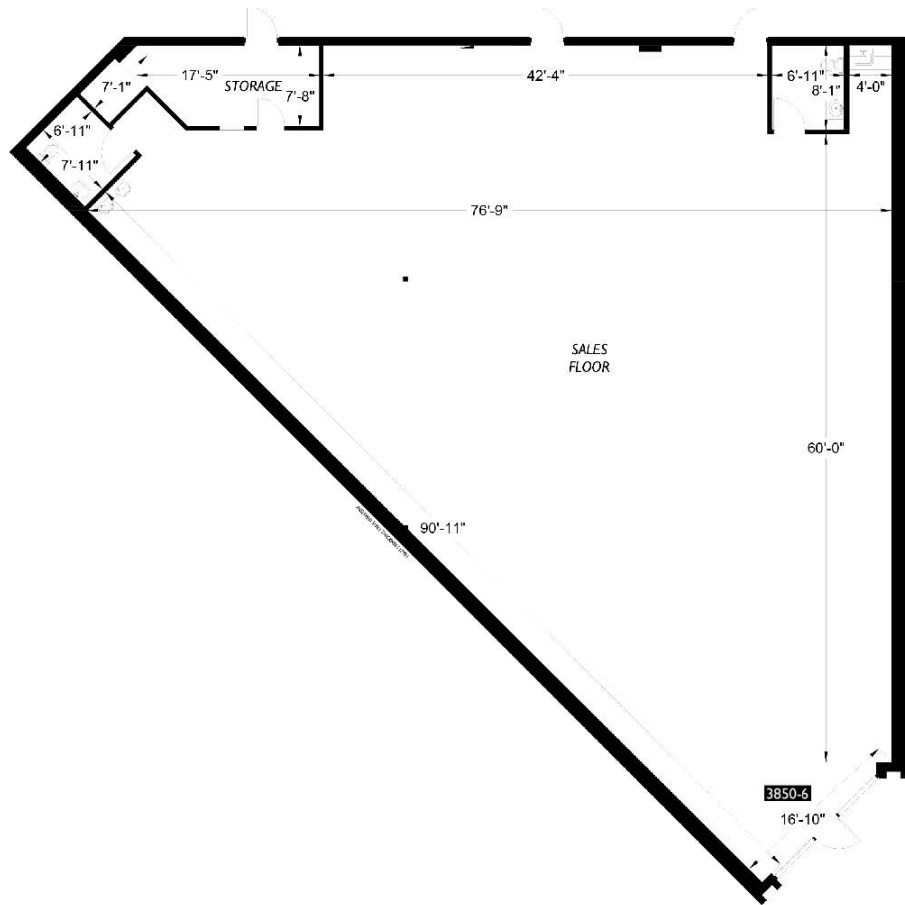
LOCATION & HIGHLIGHTS

LOCATION INFORMATION

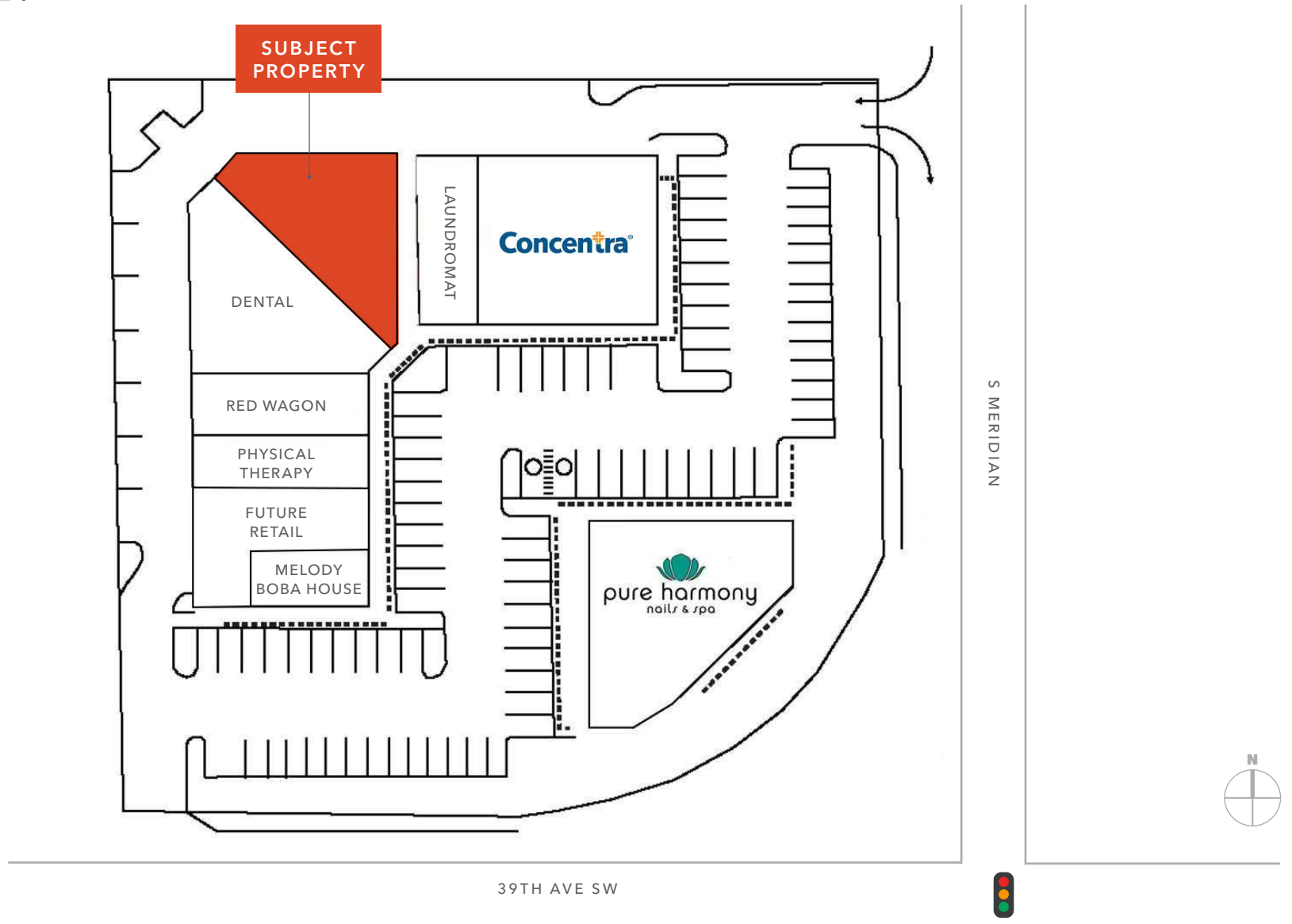
BUILDING NAME	South Hill Plaza
ADDRESS	3850 S Meridian, Puyallup, WA 98373
COUNTY	Pierce County
SIGNAL INTERSECTION	39th Ave SW & S Meridian



FLOOR PLAN



SITE PLAN



SOUTH HILL PLAZA

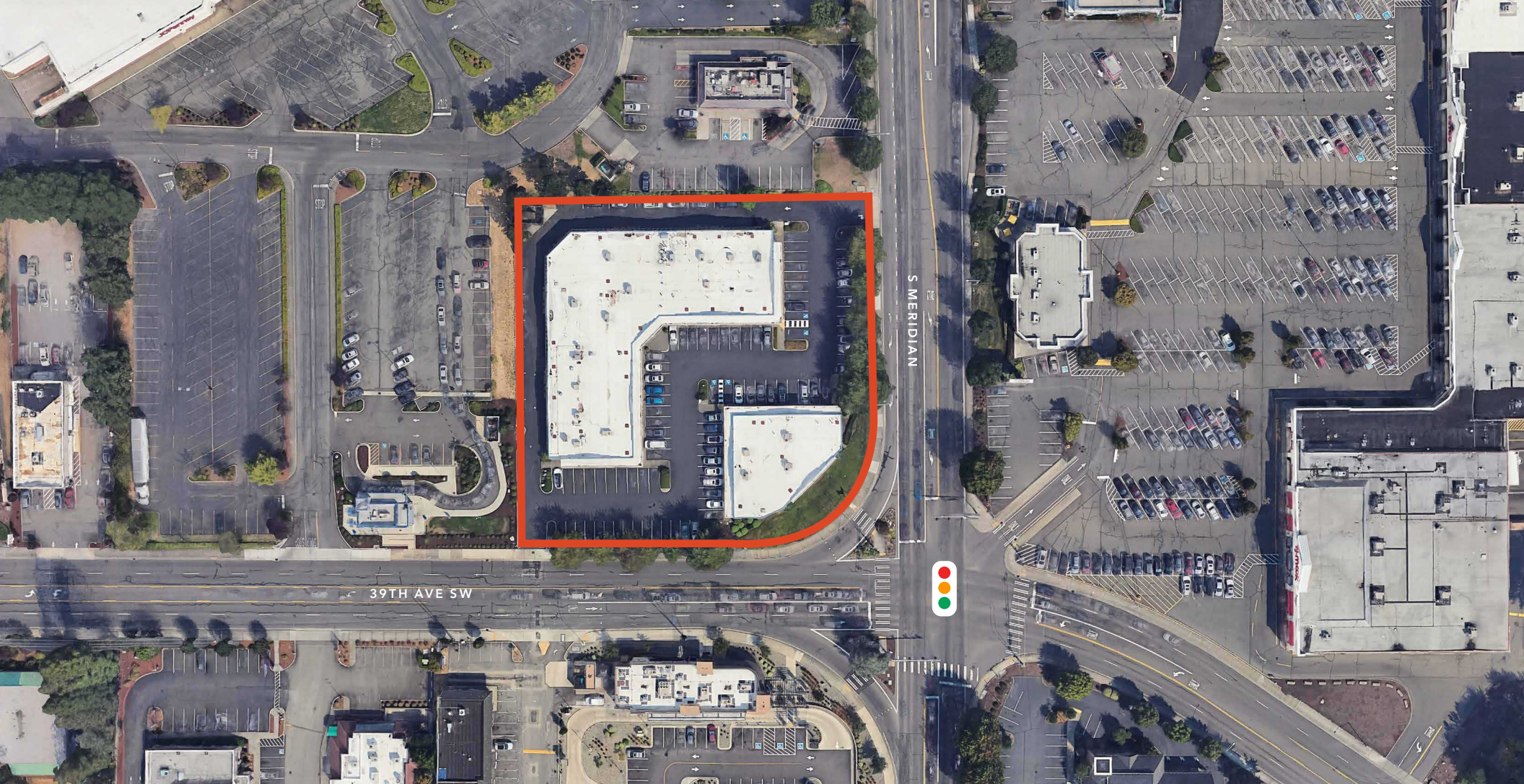


SOUTH HILL MALL

SUBJECT PROPERTY

--	--	--

--	--	--



SOUTH HILL PLAZA

*For more information on
this property, please contact*

JEROME O'LEARY
253.732.2600
jerome.oleary@kidder.com

KIDDER.COM

This information supplied herein is from sources we deem reliable. It is provided without any representation, warranty, or guarantee, expressed or implied as to its accuracy. Prospective Buyer or Tenant should conduct an independent investigation and verification of all matters deemed to be material, including, but not limited to, statements of income and expenses. Consult your attorney, accountant, or other professional advisor. All Kidder Mathews designs are the sole property of Kidder Mathews. Branded materials and layouts are not authorized for use by any other firm or person.

