

SODO - 6th & Lander

2450 6th Ave S., Units 21-23

Seattle, WA 98134



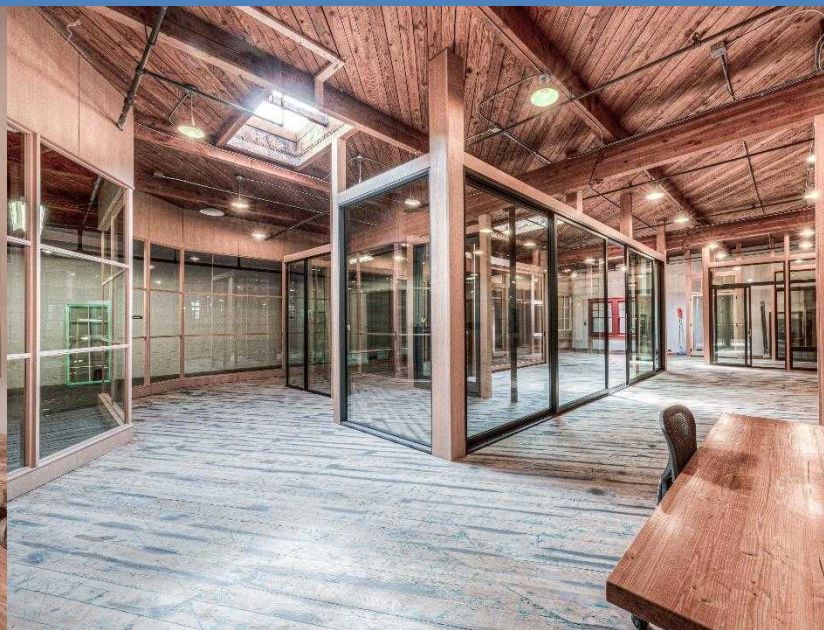
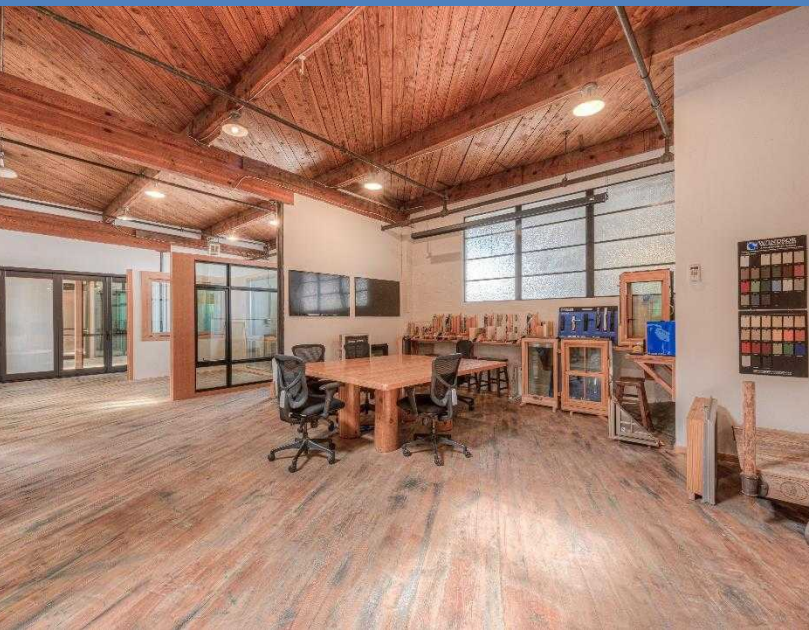
FOR LEASE
Industrial
Warehouse

CONTACT:

MARK TEMMEL
(206) 307-5726
mark@temmelre.com
Temmel Real Estate

SPACE DETAILS

Units 21-23 is 5,383 sq.ft. (usable) of warehouse/office/flex space available with 45 days' notice. Available via sub-lease through June 30, 2027 or a direct, long-term lease with the Landlord. The unit is currently used as a window showroom. Most windows will be replaced with drywall when the current Tenant vacates. The unit is located on the third floor with access via a freight elevator or a third-floor parking garage. The unit boasts exposed, sand blasted ceilings and sanded, original wood flooring. The unit is sprinklered and has six skylights. Asking rate is \$1.15/SF + NNN. NNN's are 0.53¢/SF and include utilities (minus phone/internet/janitorial). The building is located one block from the SODO light rail station. There is free street parking in front of building. Easy access to I-5, Hwy 99, and I-90.



Square Feet	6,991 (BOMA)
Base Rent	\$1.15/SF
NNN (0.53¢)	\$3,705/month
Available	45 Days' Notice
Units	21-23

