

FOR SUBLEASE

EAST CAMPUS CORPORATE PARK BUILDING VI

3455 S 344TH WAY, FEDERAL WAY, WA



PROPERTY OVERVIEW

Master lease expires August, 30, 2030

Ground floor location with loading dock access

8 private offices, two conference rooms

Two break areas

Large open bull pen with work stations

Backup power generator

6,000 SF storage / flex, 6,334 SF turn-key office

Furniture is included

New LED lighting

Abundant parking

2 MIN
DRIVE TO HWY 18

3 MIN
DRIVE TO I-5



EAST CAMPUS CORPORATE PARK | BUILDING VI



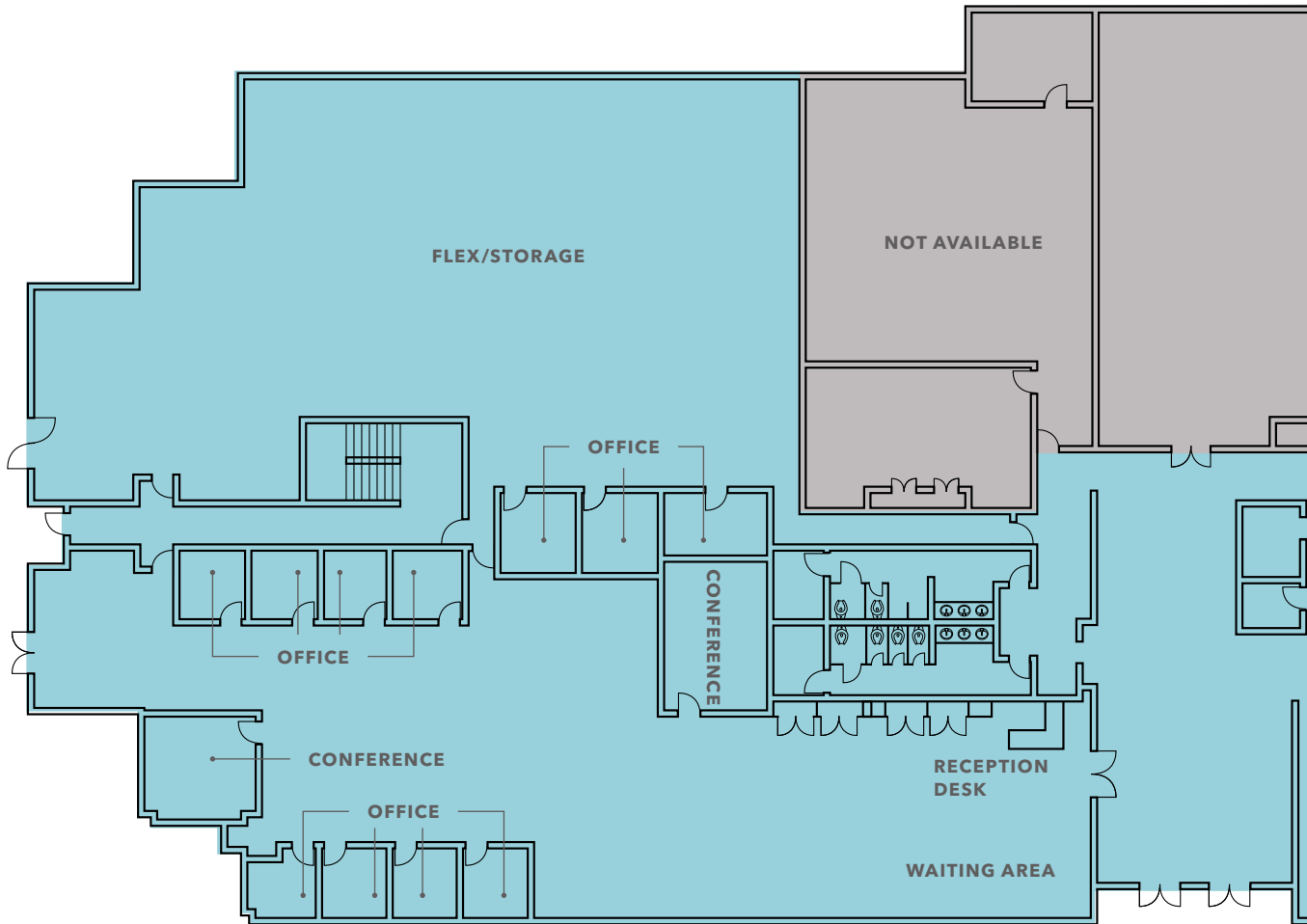
SUITE 100 / 140

12,334

AVAILABLE SF

CALL

BROKER FOR RATES



EAST CAMPUS CORPORATE PARK | BUILDING VI



EAST CAMPUS CORPORATE PARK | BUILDING VI



DIRECT ACCESS
TO HWY 18 & I-5



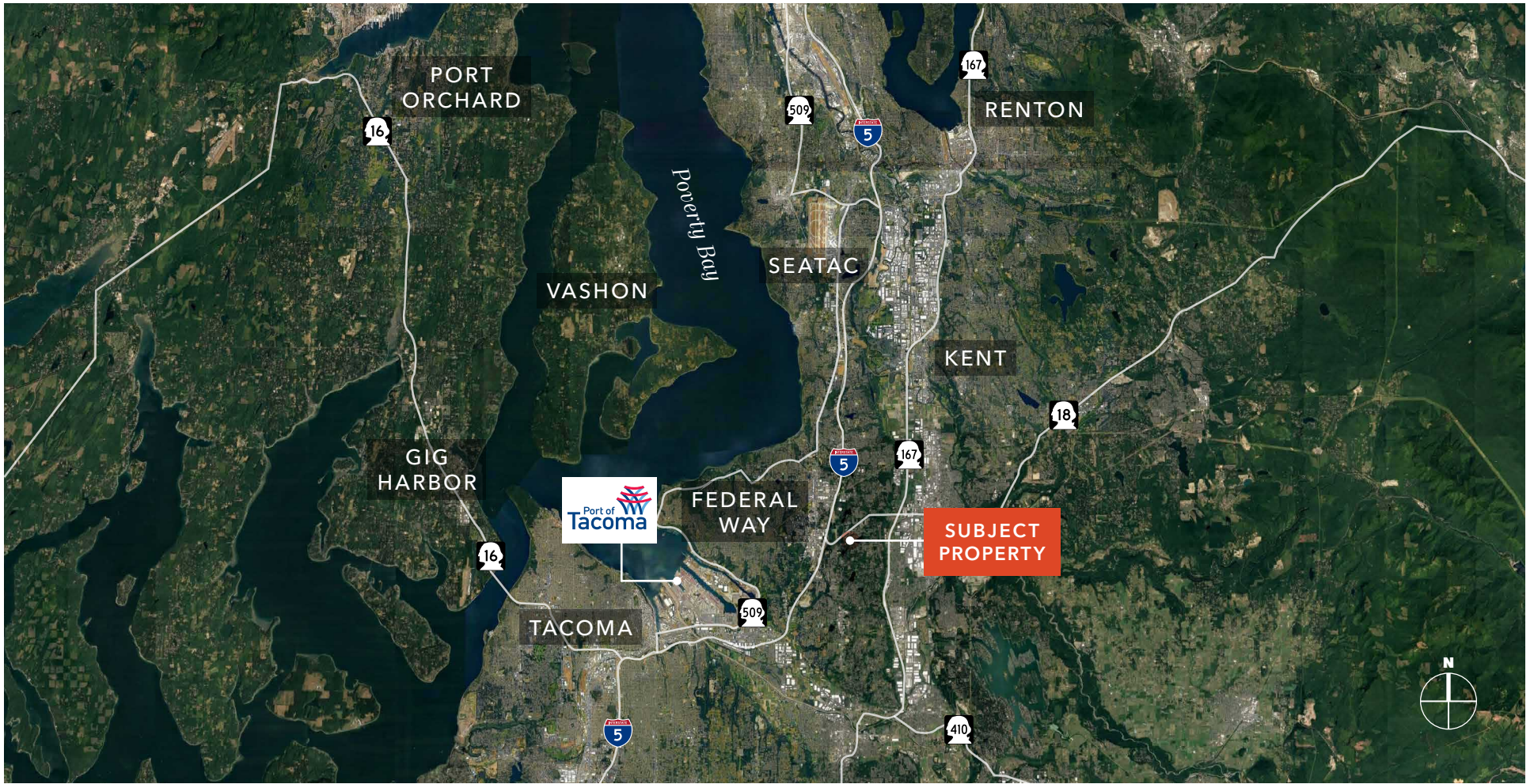
GROUND FLOOR
ACCESS WITH
LOADING DOCK



15 MIN DRIVE TO
SEATAC AIRPORT



24/7 SECURITY



EAST CAMPUS CORPORATE PARK | BUILDING VI



CELEBRATION CENTER

PAVILLION CENTRE I & II

THE COMMONS AT FEDERAL WAY

--	--

--	--

--

--

SUBJECT PROPERTY

WILD WAVES THEME AND WATER PARK

ST FRANCIS HOSPITAL



EAST CAMPUS CORPORATE PARK | BUILDING VI

*For more information on
this property, please contact*

JOEL SHABEL

Vice President

253.722.1406

joel.shabel@kidder.com

KIDDER.COM

This information supplied herein is from sources we deem reliable. It is provided without any representation, warranty, or guarantee, expressed or implied as to its accuracy. Prospective Buyer or Tenant should conduct an independent investigation and verification of all matters deemed to be material, including, but not limited to, statements of income and expenses. Consult your attorney, accountant, or other professional advisor. All Kidder Mathews designs are the sole property of Kidder Mathews. Branded materials and layouts are not authorized for use by any other firm or person.

