



BRIDGE POINT KENT 109

71,332 TOTAL SF | 3,083 SF OFFICE
PREMIER LOCATION IN VAN DOREN'S LANDING, KENT

6205 S 231ST STREET | KENT, WA



USPS

SYSCO SEATTLE
COMPREHENSIVE LOGISTICS



FED EX FREIGHT
SPACE X
PIONEER PACKAGING

MCKESSON SEATTLE DC
SHAW INDUSTRIES

228TH ST

64TH AVES



PATTERSON LOGISTIC SERVICES
CLOSETS BY DESIGN
WCP SOLUTIONS
SEATTLE GOURMET FOODS
PACIFIC AEROTECH
CR LAURENCE OF WA
ROTARY OFFSET PRESS
DRIVELINE BASEBALL
PAULA'S CHOICE
ACI COMMUNICATIONS
JAS FORWARDING USA

SITE PLAN

6205 BUILDING

71,332 SF

Clear Height:	24'
Loading:	13 DH (11 hydraulic levelers), 1 GL
Car Parking:	140 stalls
Office:	3,083 SF (2,999 SF mezz. & 380 SF shipping office)
Features:	New ESFR sprinkler system

PERFECTLY LOCATED WITHIN IN KENT

Centrally located, Bridge Point Kent boasts immediate access to West Vally HWY, SR 167, and I-5.

West Vally HWY (181)

0.5 miles 2 min

SR 167 Ramp

1.8 miles 9 min

I-5 Ramp

2.4 miles 12 min

Sea-Tac International Airport

5.5 miles 14 min

Port of Seattle

18.5 miles 32 min

Port of Tacoma

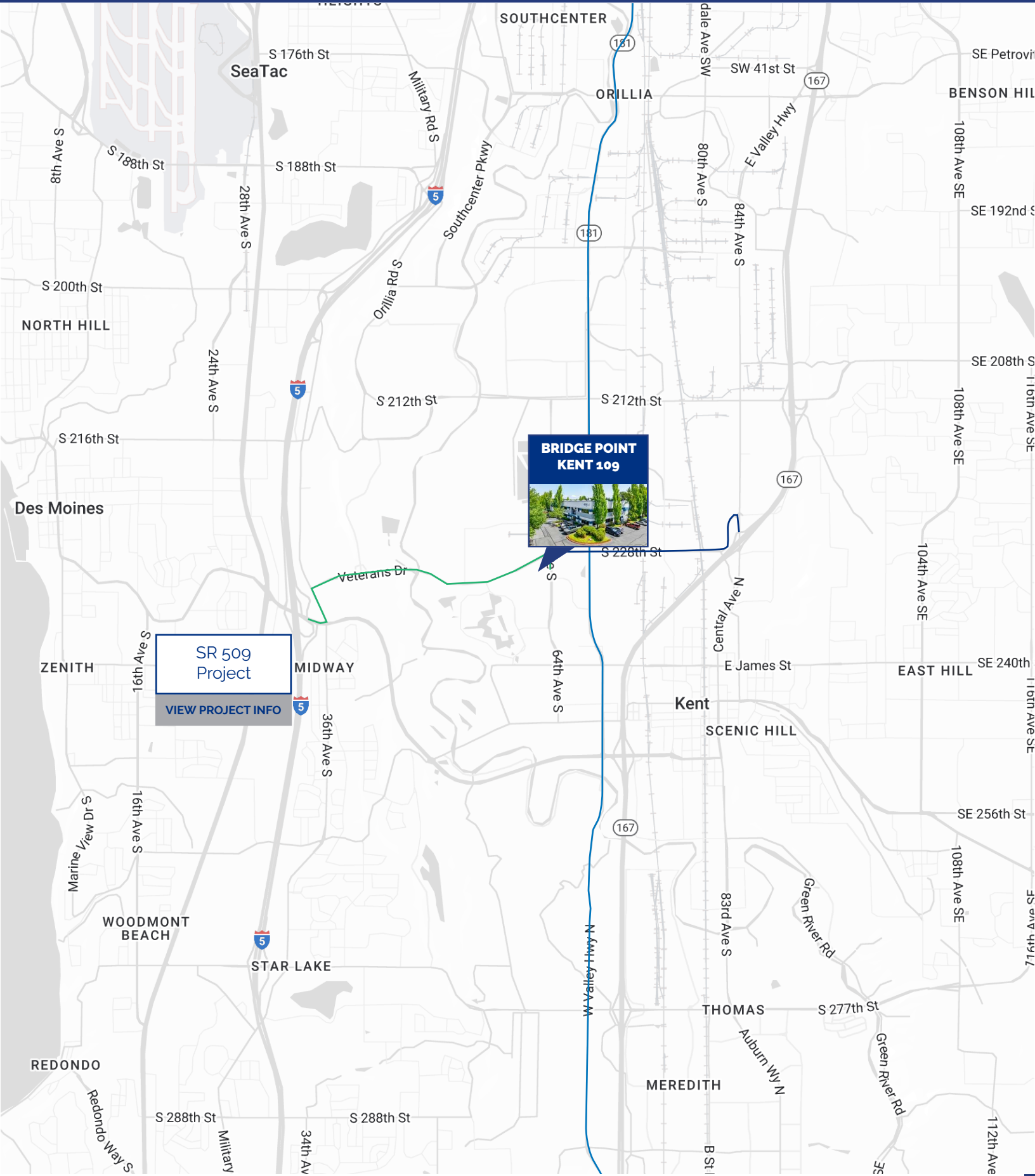
17.9 miles 26 min

Seattle CBD

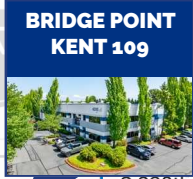
18 miles 25 min

Bellevue

18.5 miles 30 min



SR 509 Project
[VIEW PROJECT INFO](#)





CHICAGO • LA • MIAMI • NJ • NY • PHILADELPHIA • SF • SEATTLE
AMSTERDAM • LONDON • PARIS



Bridge Industrial, a privately-owned, vertically integrated real estate operating company and investment manager transforms complex real estate opportunities into irreplaceable industrial assets.

Bridge Industrial acquires and develops sites where it can leverage its expertise in complex transactions, skilled site development, creative property solutions, and successful leasing. The firm seeks opportunities to acquire and develop Class A logistics real estate, in the supply-constrained core markets of Chicago, Miami, New Jersey, New York, Los Angeles, San Francisco, Seattle, UK, and Europe. Since its inception in 2000, Bridge has successfully acquired and developed close to 74 million square feet of logistics facilities.

73M+ SF *ACQUIRED & DEVELOPED SINCE 2000*

OUR COMMITMENT TO SUSTAINABILITY

As stewards of sustainability, resilience, and regeneration, our vision is to deliver exceptional value for our investors, employees, tenants, and communities through superior ESG performance.



For further information please contact the below agents:



ARIE SALOMON
Principal
asalomon@nai-psp.com
425-586-5636

JEFF FORSBERG
Principal
jforsberg@nai-psp.com
425-586-5610

CONNOR POWELL
Partner
cpowell@nai-psp.com
425-586-5642

LUKE JARVIS
Associate
ljarvis@nai-psp.com
425-586-5609

This information supplied herein is from sources we deem reliable. It is provided without any representation, warranty or guarantee, expressed or implied as to its accuracy. Prospective Buyer or Tenant should conduct an independent investigation and verification of all matters deemed to be material, including, but not limited to, statements of income and expenses. Consult your attorney, accountant, or other professional advisor.