

# KENYON BUSINESS PARK

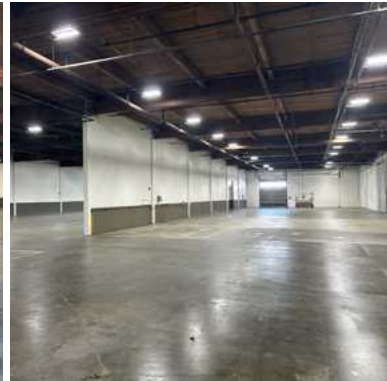
FOR LEASE: 4,827 SF – 9,505 SF

S KENYON ST & OCCIDENTAL AVE S | SEATTLE, WA 98108

## SOUTH SEATTLE WAREHOUSE SPACE



**K**enyon Business Park is a four building, 127,889 square foot business park with superior visibility located along SR-509 in Seattle. Ideal for shipping and receiving, Kenyon Business Park offers close proximity access to the Port of Seattle, SeaTac Airport, Downtown Seattle I-5 and the Kent Valley.



### PROPERTY FEATURES

Great access to SR-509, SR-99 & I-5

± 20' Clear Height

Dock & Grade Loading

Ownership-Management Office Located Nearby

**SPENCER MEAD**

206.787.1476

smead@neilwalter.com

**JIM HONAN**

206.787.1464

jhonan@neilwalter.com



*professionally  
managed/owned by:*



All information references in this document are approximate. The information contained herein is contained from sources deemed reliable. It is provided without representation, warranty, or guarantee, expressed or implied as to accuracy. Prospective buyer or tenant should conduct its own independent investigation relating to the property, government codes and regulations, allowed uses, and all other matters, regardless of whether they are referred to or contained in this document.

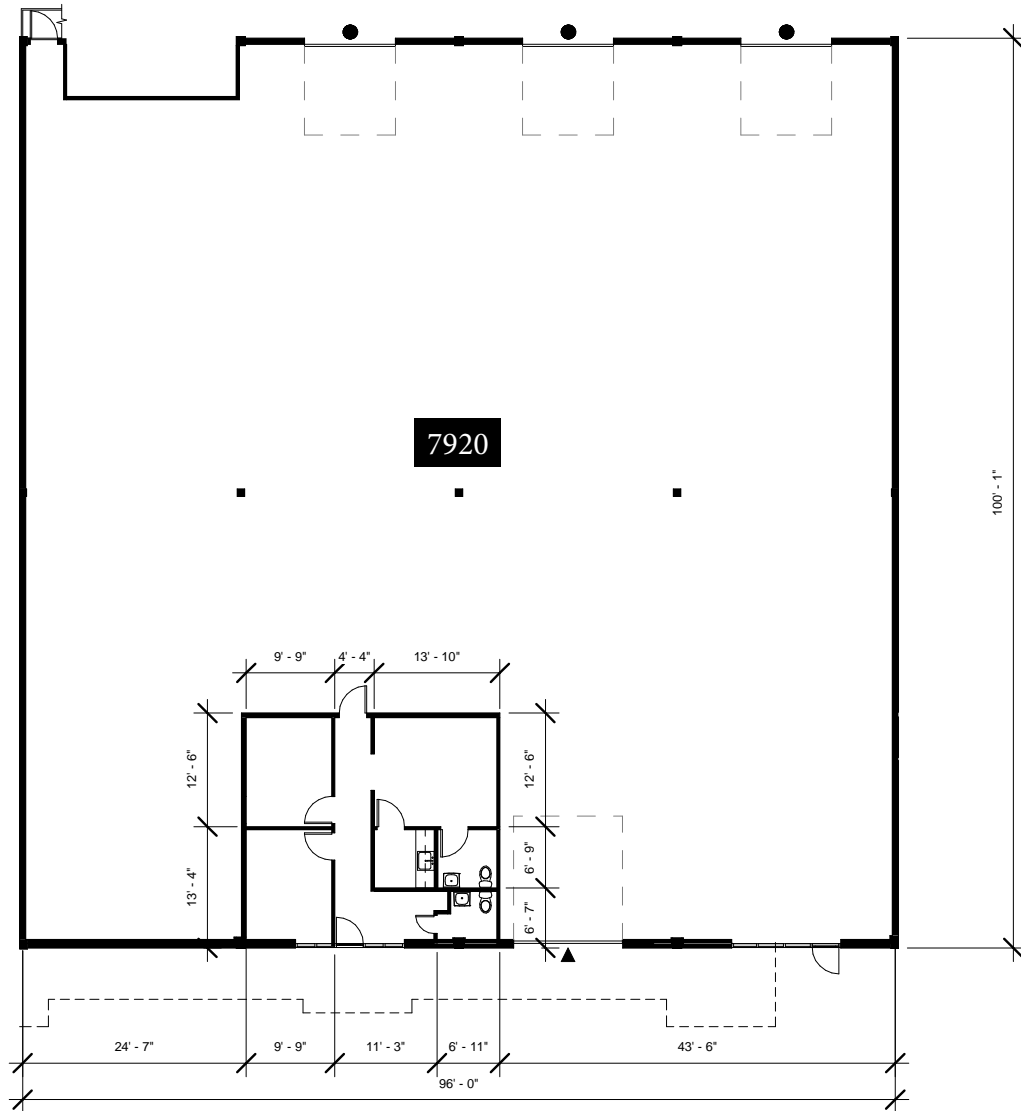
# KENYON BUSINESS PARK

S KENYON ST & OCCIDENTAL AVE S | SEATTLE, WA 98108



## Building A Lease Opportunities

Unit(s)	Total SF	Office SF	Loading	Power	Available
7920	9,505 SF	768 SF	1 GL & 3 DH	TBD	Now



- ▲ Grade Level Door
- Dock High Door

**SPENCER MEAD**  
206.787.1476  
smead@neilwalter.com

**JIM HONAN**  
206.787.1464  
jhonan@neilwalter.com

550 S Michigan St  
Seattle, WA 98108  
206.787.1800  
www.neilwalter.com

All information references in this document are approximate. The information contained herein is contained from sources deemed reliable. It is provided without representation, warranty, or guarantee, expressed or implied as to accuracy. Prospective buyer or tenant should conduct its own independent investigation relating to the property, government codes and regulations, allowed uses, and all other matters, regardless of whether they are referred to or contained in this document.

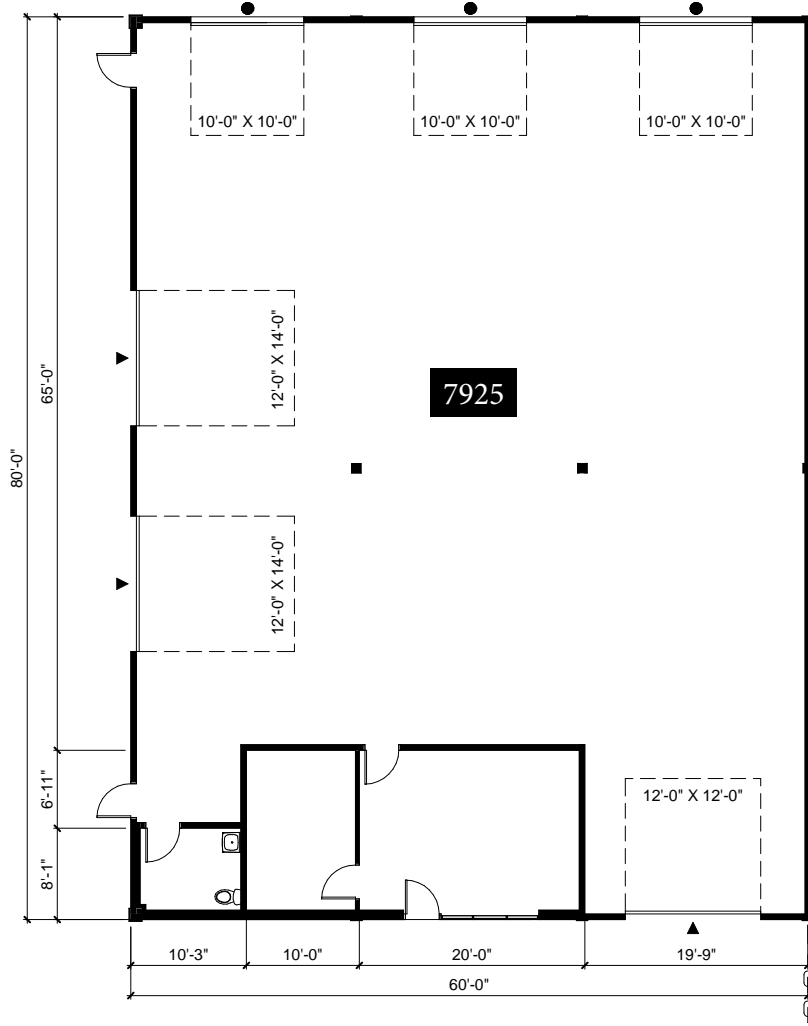
# KENYON BUSINESS PARK

S KENYON ST & OCCIDENTAL AVE S | SEATTLE, WA 98108



## Building C Lease Opportunities

Unit(s)	Total SF	Office SF	Loading	Power	Available
7925	4,827 SF	556 SF	3 GL & 3 DH	TBD	7/1/2026



- ▲ Grade Level Door
- Dock High Door

**SPENCER MEAD**  
206.787.1476  
smead@neilwalter.com

**JIM HONAN**  
206.787.1464  
jhonan@neilwalter.com

550 S Michigan St  
Seattle, WA 98108  
206.787.1800  
www.neilwalter.com

All information references in this document are approximate. The information contained herein is contained from sources deemed reliable. It is provided without representation, warranty, or guarantee, expressed or implied as to accuracy. Prospective buyer or tenant should conduct its own independent investigation relating to the property, government codes and regulations, allowed uses, and all other matters, regardless of whether they are referred to or contained in this document.

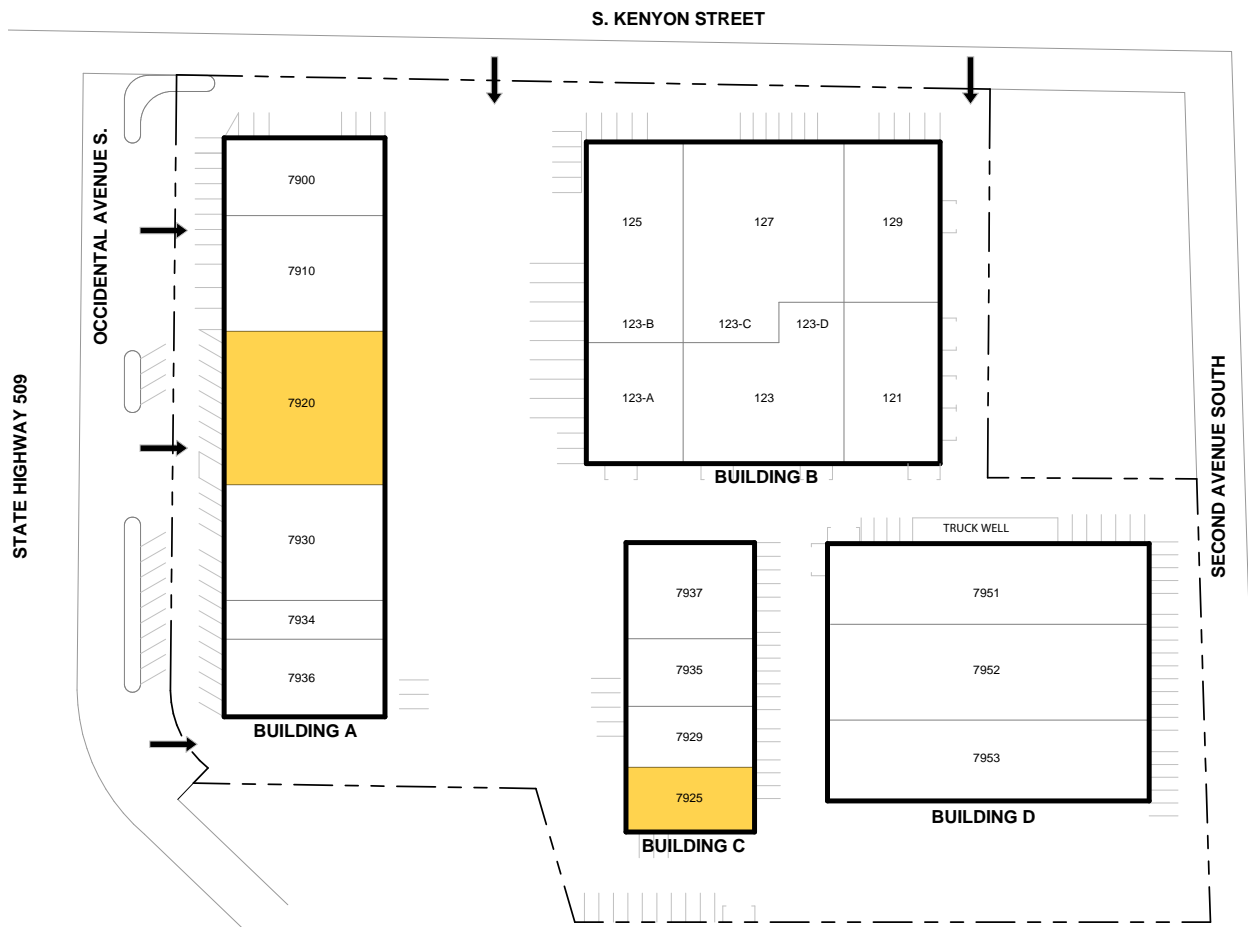
# KENYON BUSINESS PARK

S KENYON ST & OCCIDENTAL AVE S | SEATTLE, WA 98108



## Current Lease Opportunities

Building	Unit(s)	Total SF	Office SF	Loading	Power	Available
A	7920	9,505 SF	768 SF	1 GL & 3 DH	TBD	Now
C	7925	4,827 SF	556 SF	3 GL & 3 DH	TBD	7/1/2026



**SPENCER MEAD**  
206.787.1476  
smead@neilwalter.com

**JIM HONAN**  
206.787.1464  
jhonan@neilwalter.com

550 S Michigan St  
Seattle, WA 98108  
206.787.1800  
www.neilwalter.com

All information references in this document are approximate. The information contained herein is contained from sources deemed reliable. It is provided without representation, warranty, or guarantee, expressed or implied as to accuracy. Prospective buyer or tenant should conduct its own independent investigation relating to the property, government codes and regulations, allowed uses, and all other matters, regardless of whether they are referred to or contained in this document.