



600 W WILBUR AVE

INDUSTRIAL SPACE FOR SUBLEASE | COEUR D'ALENE, ID 83815

CONTACT

DANNY DAVIS, CCIM
208.691.6003
danny@tokcommercial.com

HIGHLIGHTS

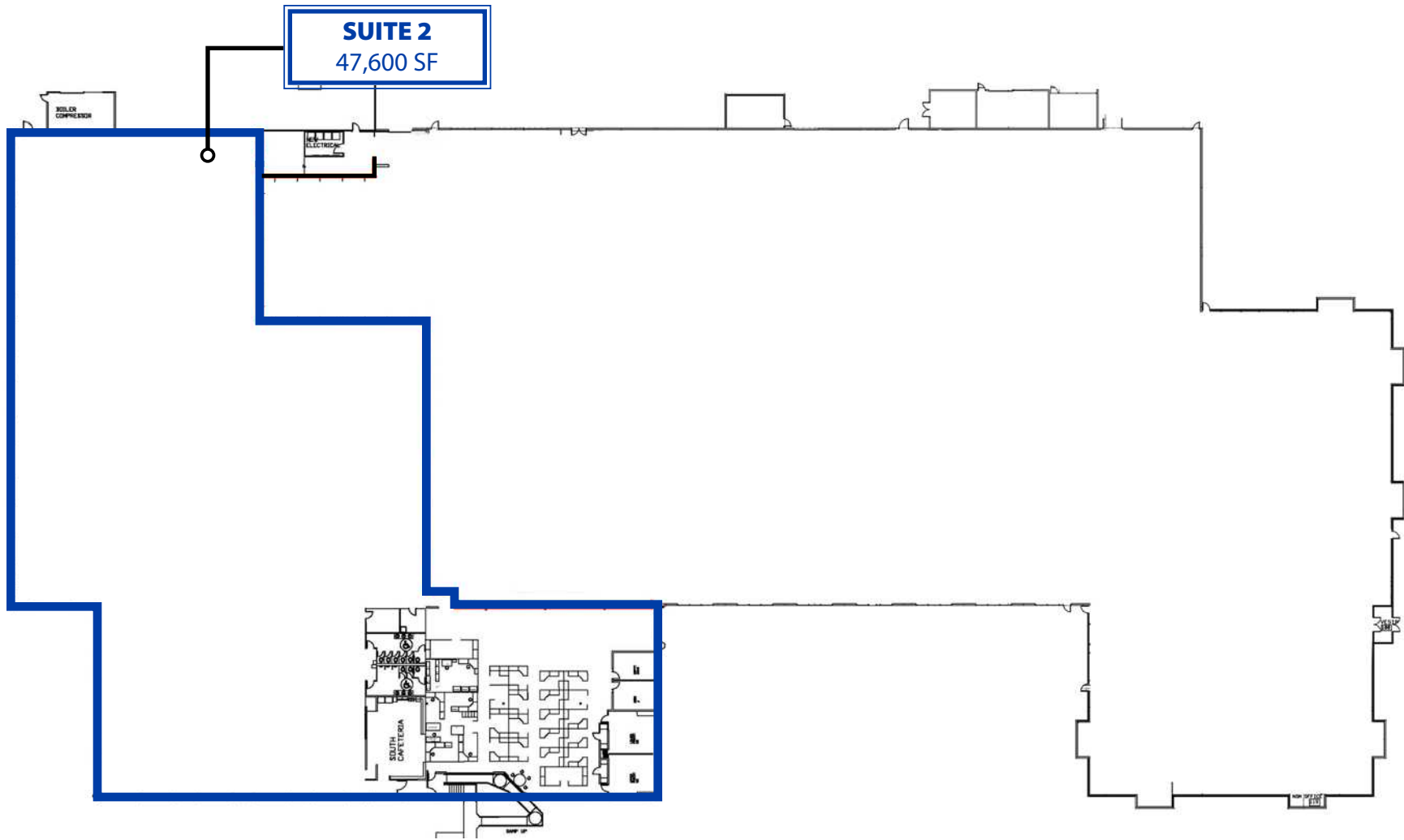
- Concrete tilt-up construction with modern glass façade
- Large secured site offering ample parking and loading access
- Four shared loading docks, two of which are at grade level
- Flexible layout suitable for manufacturing or technology users
- Easy access to major arterials and nearby commercial

DETAILS

AVAILABLE	SIZE	RATE
Suite 2	47,600 SF	\$10.80/SF/yr, NNN

LOT SIZE:	13.21 Acres	ZONING:	LM
BLDG SIZE:	139,184 SF	LEASE TYPE:	NNN
YEAR BUILT:	1998	EST NNN'S:	\$2.60/SF
POWER:	3-Phase; 600 amps	AVAILABLE:	Immediately
DOCK DOORS:	2 (Shared)	SUBLEASE THRU:	Feb. 2028
GRADE DOORS:	2 (Shared)		

FLOOR PLANS



600 W WILBER AVE

UPDATED: 2.5.2026

THIS PROPERTY IS EXCLUSIVELY MARKETED BY TOK INLAND NORTHWEST LLC DBA TOK COMMERCIAL. This information was obtained from sources believed reliable but cannot be guaranteed. Any opinions or estimates are used for example only.

TOKCOMMERCIAL.COM



600 W WILBER AVE

UPDATED: 2.5.2026

THIS PROPERTY IS EXCLUSIVELY MARKETED BY TOK INLAND NORTHWEST LLC DBA TOK COMMERCIAL. This information was obtained from sources believed reliable but cannot be guaranteed. Any opinions or estimates are used for example only.

TOKCOMMERCIAL.COM

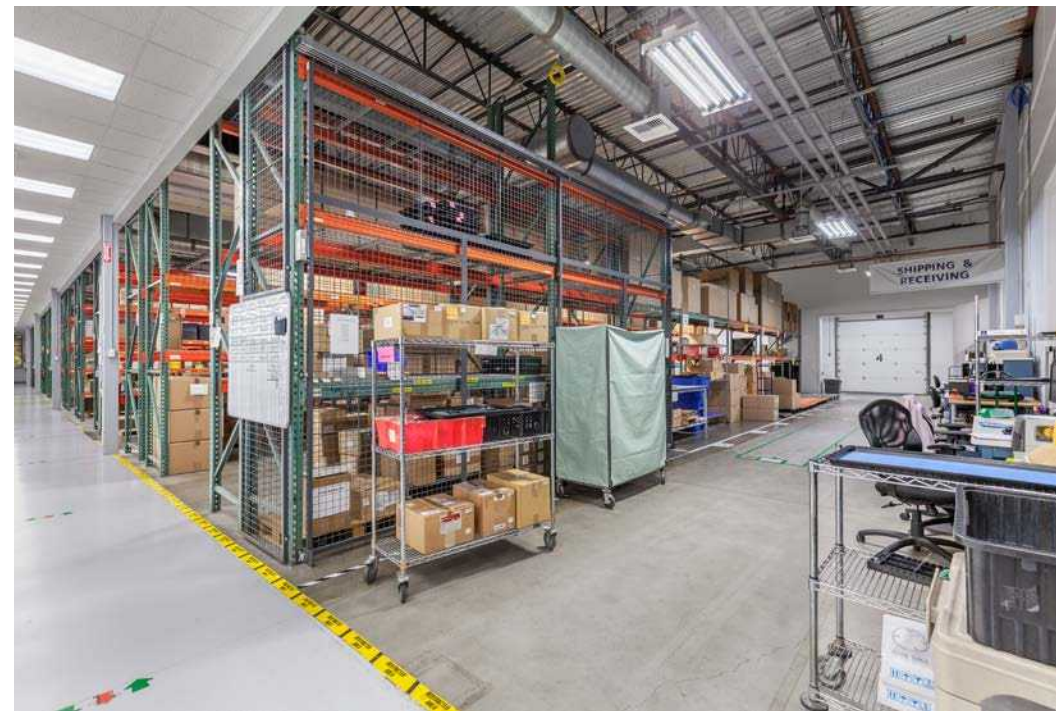


600 W WILBER AVE

UPDATED: 2.5.2026

THIS PROPERTY IS EXCLUSIVELY MARKETED BY TOK INLAND NORTHWEST LLC DBA TOK COMMERCIAL. This information was obtained from sources believed reliable but cannot be guaranteed. Any opinions or estimates are used for example only.

TOKCOMMERCIAL.COM



600 W WILBER AVE

UPDATED: 2.5.2026

THIS PROPERTY IS EXCLUSIVELY MARKETED BY TOK INLAND NORTHWEST LLC DBA TOK COMMERCIAL. This information was obtained from sources believed reliable but cannot be guaranteed. Any opinions or estimates are used for example only.

TOKCOMMERCIAL.COM



600 W WILBER AVE

UPDATED: 2.5.2026

THIS PROPERTY IS EXCLUSIVELY MARKETED BY TOK INLAND NORTHWEST LLC DBA TOK COMMERCIAL. This information was obtained from sources believed reliable but cannot be guaranteed. Any opinions or estimates are used for example only.



DOWNTOWN CDA



SITE

33,403 VPD

SILVERLAKE MALL

W CANFIELD AVE

W WILBUR AVE

600 W WILBER AVE

UPDATED: 2.5.2026

THIS PROPERTY IS EXCLUSIVELY MARKETED BY TOK INLAND NORTHWEST LLC DBA TOK COMMERCIAL. This information was obtained from sources believed reliable but cannot be guaranteed. Any opinions or estimates are used for example only.



SITE

KOHL'S
Starbucks
DEL TACO

US
95

35,189 VPD

BEST BUY
Panda Express

W WILBUR AVE

ADVANCED
INPUT SYSTEMS

Aaron's
Rent to Own
ULTA
TJ-maxx
petco
THE HEALTH +
WELLNESS CO.
SIERRA
TRADING POST

600 W WILBER AVE

UPDATED: 2.5.2026

THIS PROPERTY IS EXCLUSIVELY MARKETED BY TOK INLAND NORTHWEST LLC DBA TOK COMMERCIAL. This information was obtained from sources believed reliable but cannot be guaranteed. Any opinions or estimates are used for example only.

TOKCOMMERCIAL.COM

AERIAL MAP SURROUNDED BY AMENITIES

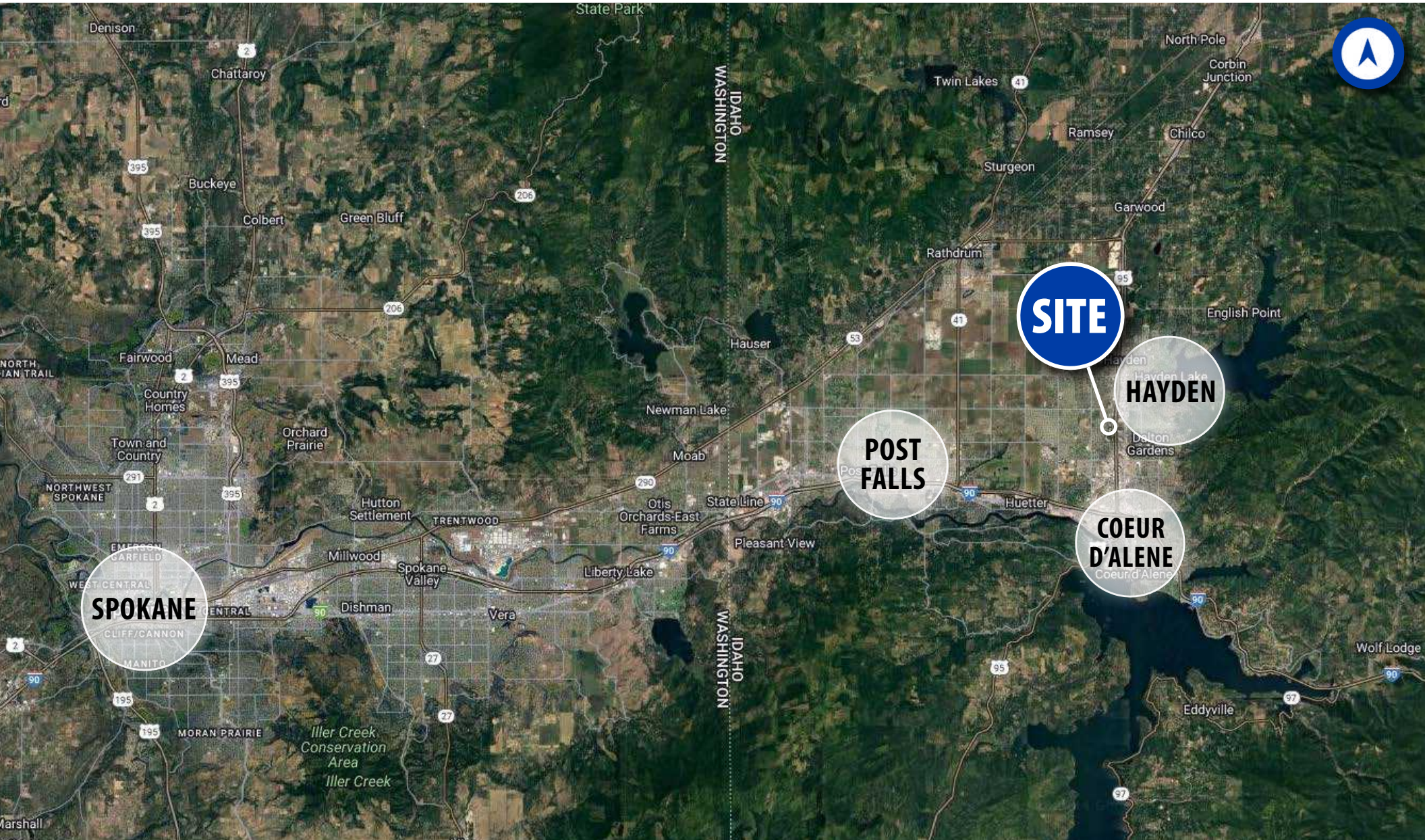


1 MILE RADIUS			3 MILE RADIUS			5 MILE RADIUS		
POPULATION	HISTORIC ANN. GROWTH	AVG. HOUSEHOLD INC.	POPULATION	HISTORIC ANN. GROWTH	AVG. HOUSEHOLD INC.	POPULATION	HISTORIC ANN. GROWTH	AVG. HOUSEHOLD INC.
8,267	3.0%	\$109,516	61,397	2.3%	\$98,854	96,499	2.2%	\$104,308
1 MI. RADIUS	1 MI. RADIUS	1 MI. RADIUS	3 MI. RADIUS	3 MI. RADIUS	3 MI. RADIUS	5 MI. RADIUS	5 MI. RADIUS	5 MI. RADIUS

AERIAL MAP

12 MIN TO COEUR D'ALENE

35 MIN TO SPOKANE



600 W WILBER AVE

UPDATED: 2.5.2026

THIS PROPERTY IS EXCLUSIVELY MARKETED BY TOK INLAND NORTHWEST LLC DBA TOK COMMERCIAL. This information was obtained from sources believed reliable but cannot be guaranteed. Any opinions or estimates are used for example only.

TOKCOMMERCIAL.COM