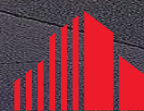


2,795 SF AVAILABLE

THE BOULEVARD CONDOS

345 KIRKLAND AVENUE, WA 98033



**CUSHMAN &
WAKEFIELD**

THE BOULEVARD CONDOS

345 Kirkland Avenue, Kirkland, WA 98033

PROPERTY HIGHLIGHTS

The Boulevard Condos is a mixed use building offering fantastic street level visibility.

- One of the few buildings in downtown Kirkland with covered parking.
- Across the street from the Performing Arts Center.
- Walking distance to numerous retailers and restaurants.
- Near Kirkland Urban, Google, Tableau, etc.

DOWNTOWN KIRKLAND RETAIL FOR LEASE

LISTING INFORMATION

Available SF: 2,795 SF

Lease Rate: \$40.00 SF/yr (NNN)

NNN Rates: \$10.85 SF/yr

Year Built: 2006

Zoning: CBD 3

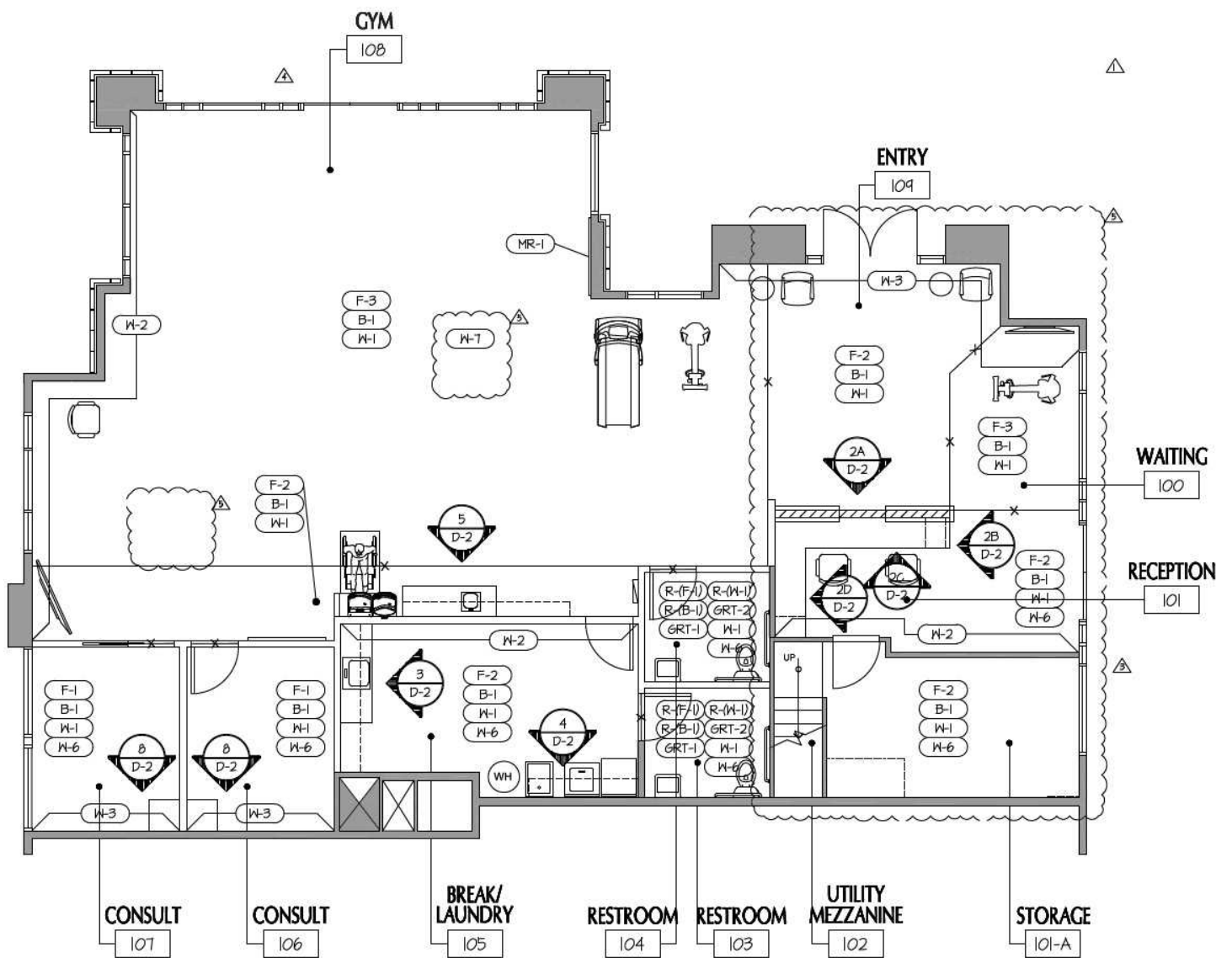
Available: 60 Days



THE BOULEVARD CONDOS

345 Kirkland Avenue, Kirkland, WA 98033

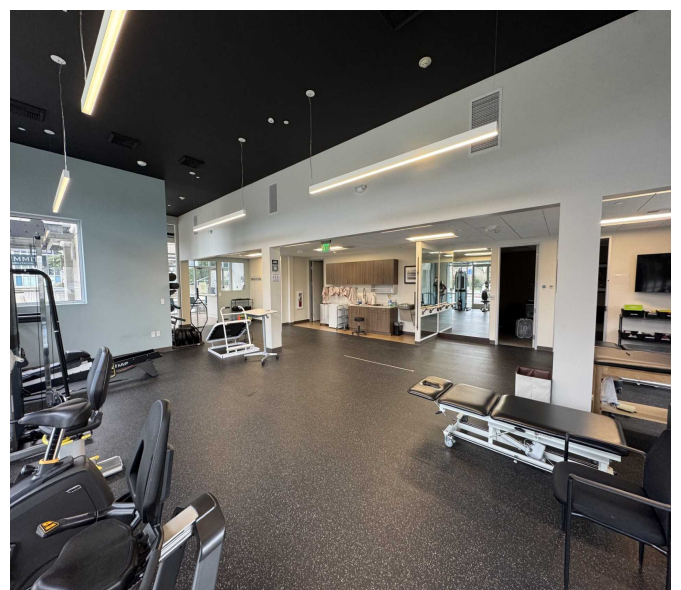
FLOOR PLAN



THE BOULEVARD CONDOS

345 Kirkland Avenue, Kirkland, WA 98033

INTERIOR PHOTOS



CONTACT

Carson Scott
Senior Associate
+1 206 215 9781
carson.scott@cushwake.com



**CUSHMAN &
WAKEFIELD**

11235 SE 6th Street
Suite 140
Bellevue, WA 98004
+1 206 618 0666
cushmanwakefield.com

©2026 Cushman & Wakefield. All rights reserved. The information contained in this communication is strictly confidential. This information has been obtained from sources believed to be reliable but has not been verified. NO WARRANTY OR REPRESENTATION, EXPRESS OR IMPLIED, IS MADE AS TO THE CONDITION OF THE PROPERTY (OR PROPERTIES) REFERENCED HEREIN OR AS TO THE ACCURACY OR COMPLETENESS OF THE INFORMATION CONTAINED HEREIN, AND SAME IS SUBMITTED SUBJECT TO ERRORS, OMISSIONS, CHANGE OF PRICE, RENTAL OR OTHER CONDITIONS, WITHDRAWAL WITHOUT NOTICE, AND TO ANY SPECIAL LISTING CONDITIONS IMPOSED BY THE PROPERTY OWNER(S). ANY PROJECTIONS, OPINIONS OR ESTIMATES ARE SUBJECT TO UNCERTAINTY AND DO NOT SIGNIFY CURRENT OR FUTURE PROPERTY PERFORMANCE.