



THE OWYHEE

1109 W MAIN STREET, BOISE, ID

Karena Gilbert
+1 208 488 3164
karena.gilbert@cbre.com

Melanie Nielsen
+1 208 678 6290
melanie.nielsen@cbre.com

Kyle Uhlenkott
+1 208 488 3161
kyle.uhlenkott@cbre.com

CBRE

AVAILABILITIES

PROPERTY HIGHLIGHTS

- Downtown office building in bustling location
- On-site gym with lockers and showers
- Shared common lobby/meeting area

Lobby area

FLOOR	SUITE	AVAILABLE SF	ASKING RATE PSF FSEJ
BASEMENT	B 20	977	\$13.00
2ND FLOOR	230	1,912	\$19.00
	260	7,937	\$16.00
3RD FLOOR	340	1,475	\$21.00
4TH FLOOR	400	3,298	\$22.00
	440	3,451	\$22.00
5TH FLOOR	500	10,259	\$22.00

\$13-\$22

LEASE RATE
PSF FSEJ

±977 - ±10,259

SF AVAILABLE

7

FLOORS

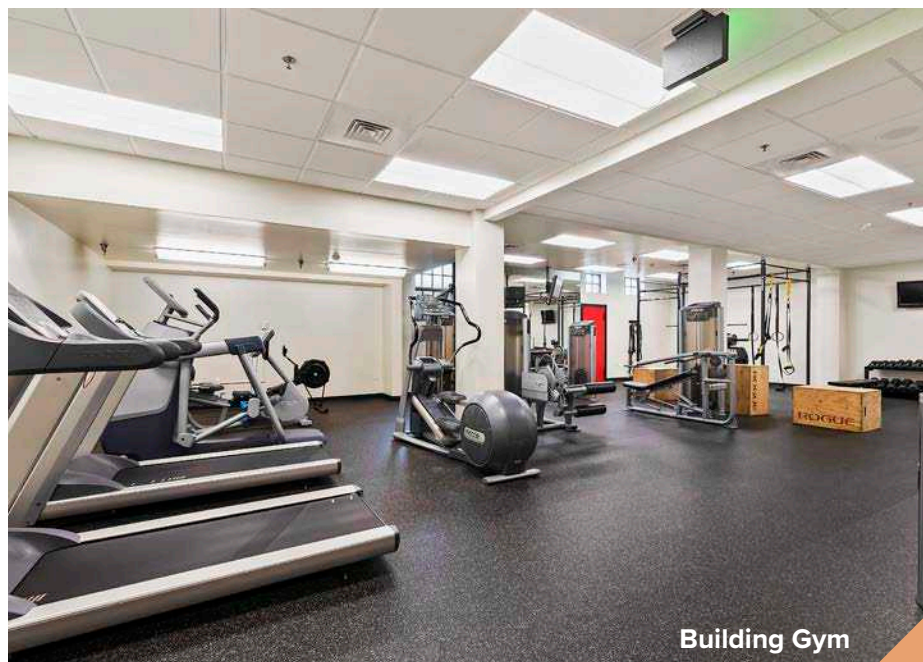
140,500

BUILDING SF

Please **do not** disturb tenants.
Contact agents for touring instructions.



Lobby area



Building Gym

BASEMENT

RATE PSF

\$13.00 FSEJ

SUITE

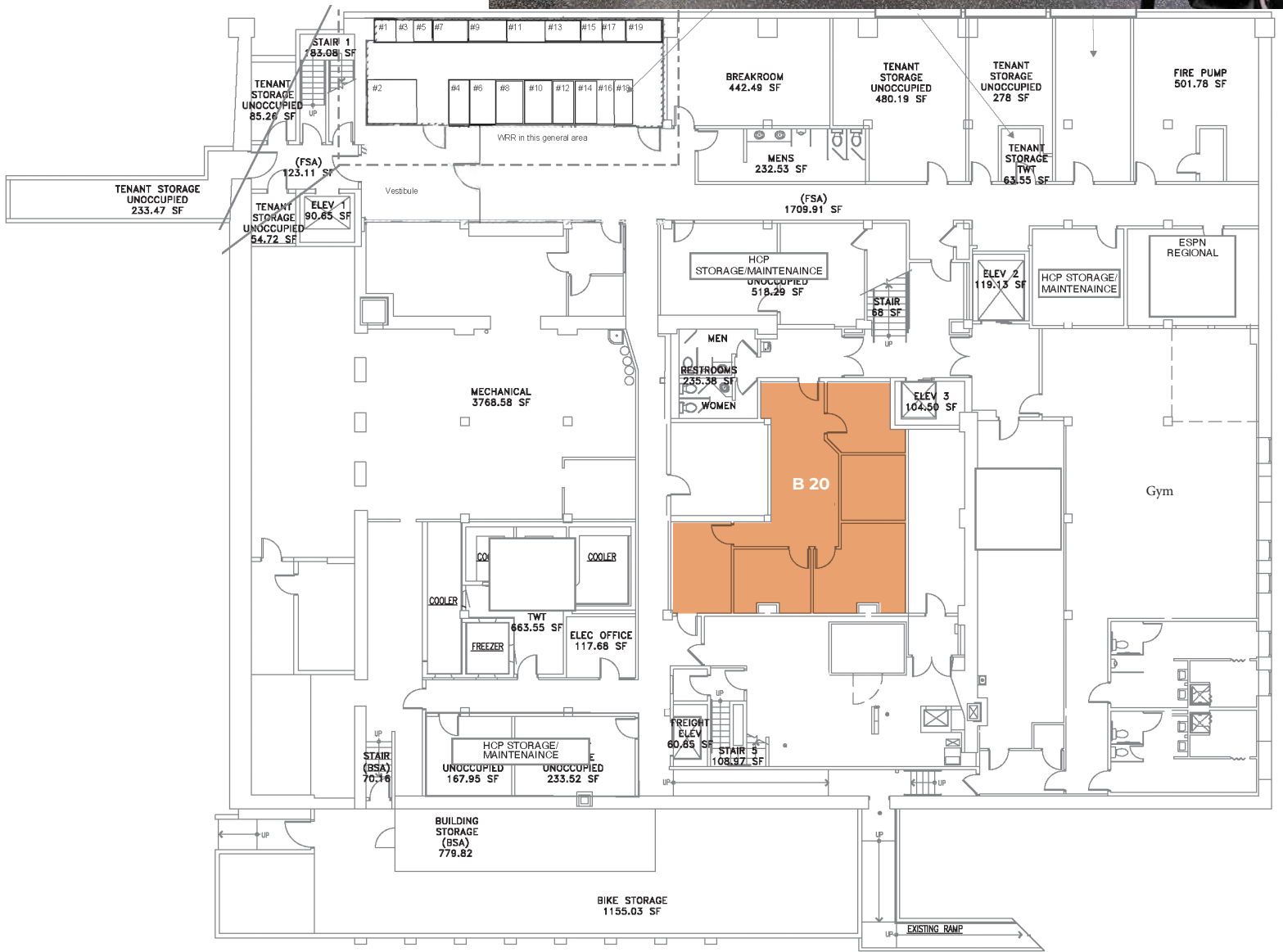
AVAILABLE SF

B 20

± 977



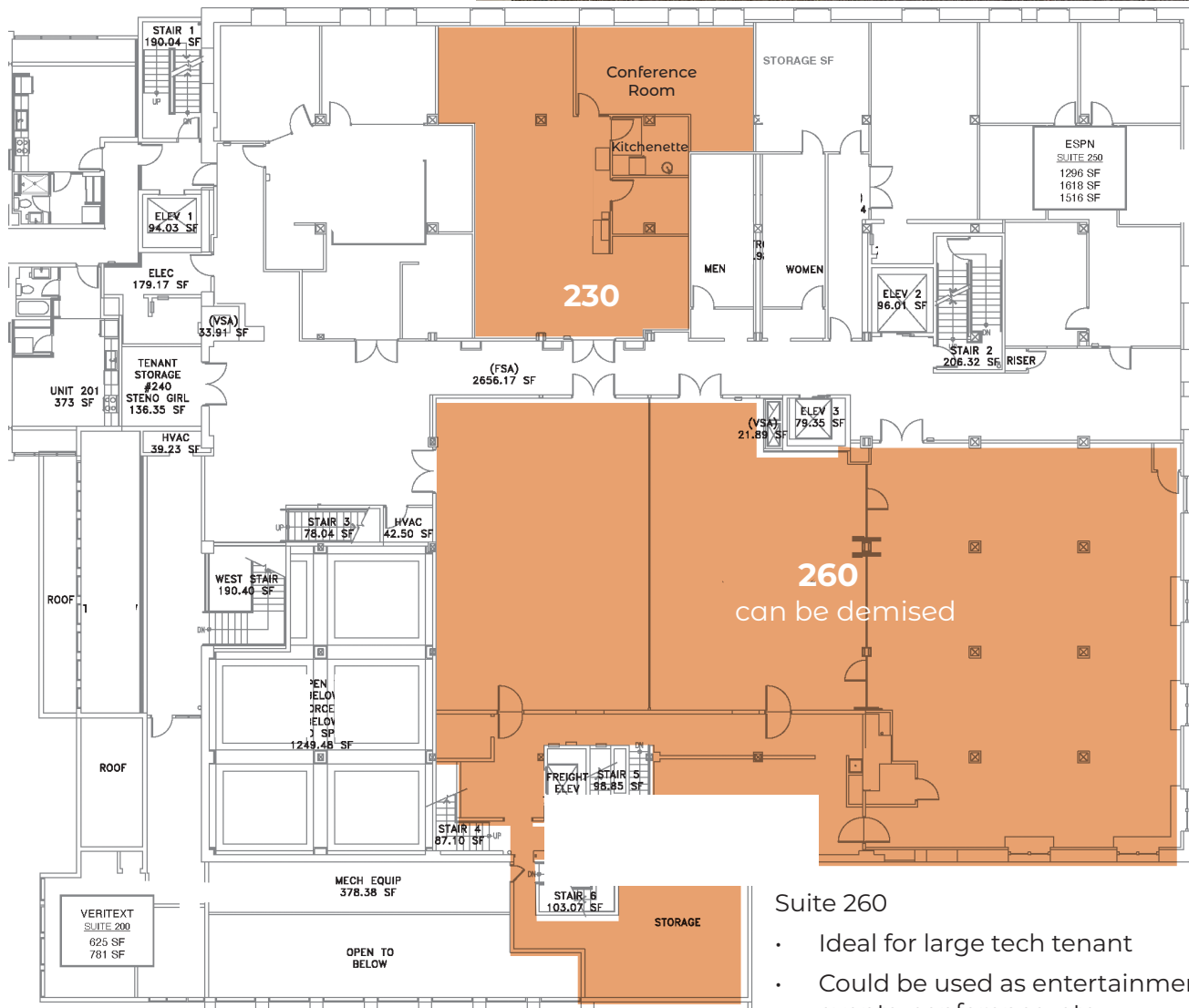
Building Gym



2ND FLOOR



SUITE	RATE PSF FSEJ	SF
230	\$19.00	±1,912
260	\$16.00	±7,937



Suite 260

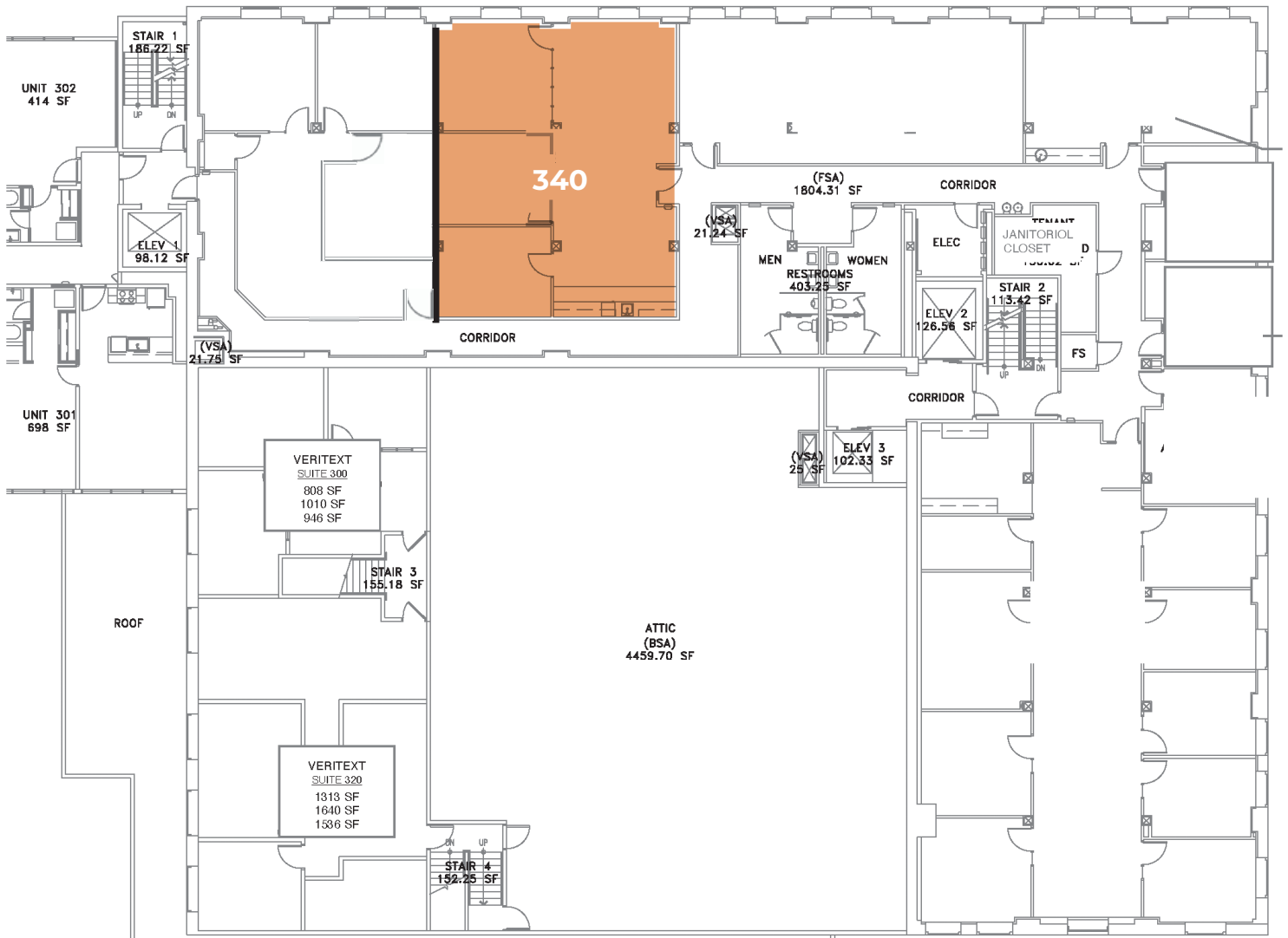
- Ideal for large tech tenant
- Could be used as entertainment venue; speaking events, conference, etc.
- Service bar, back service/kitchen prep area
- Generous TI allowance available

3RD FLOOR



SUITE	RATE PSF FSEJ	SF
340	\$21.00	±1,475

- Move-in ready
- Natural light throughout
- Private offices in each suite and open work space



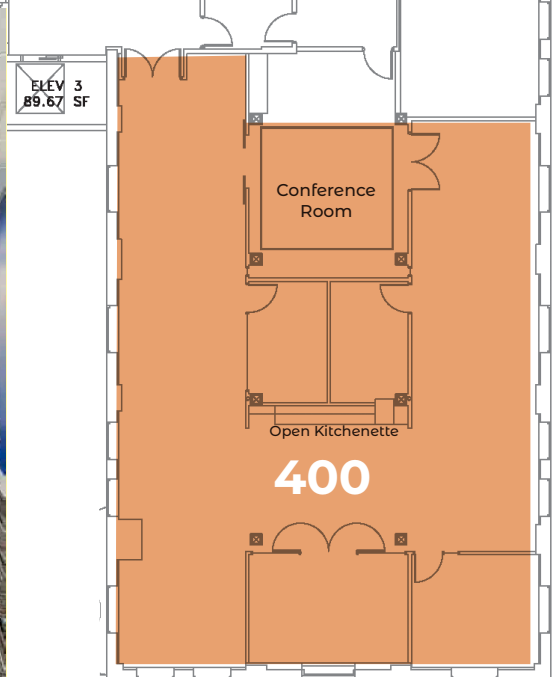
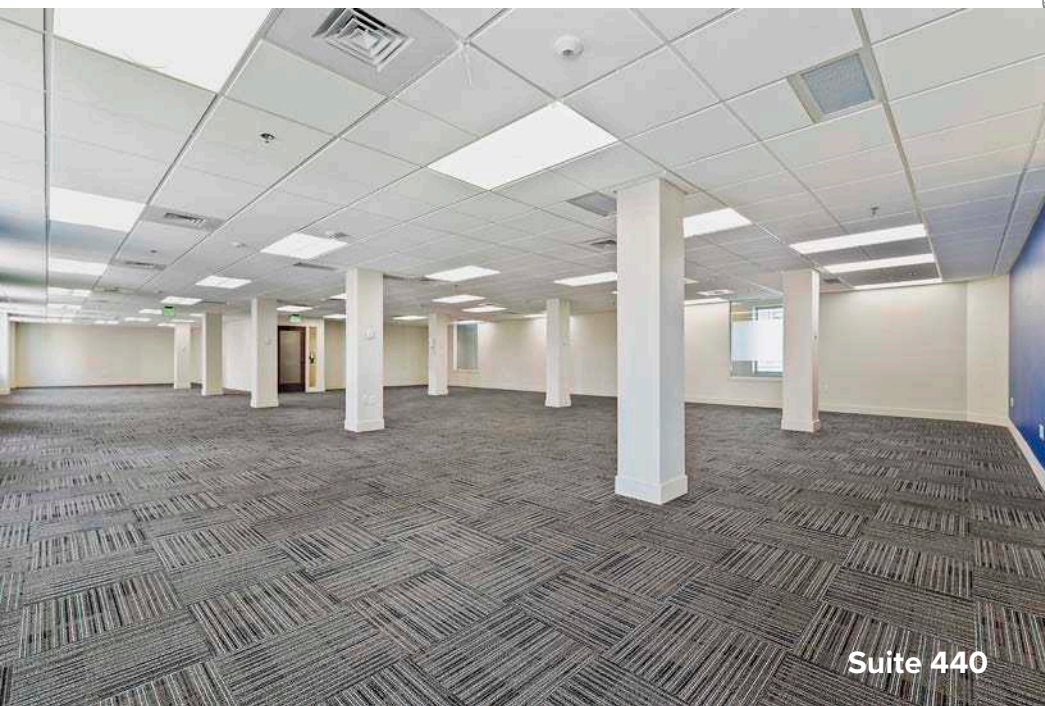
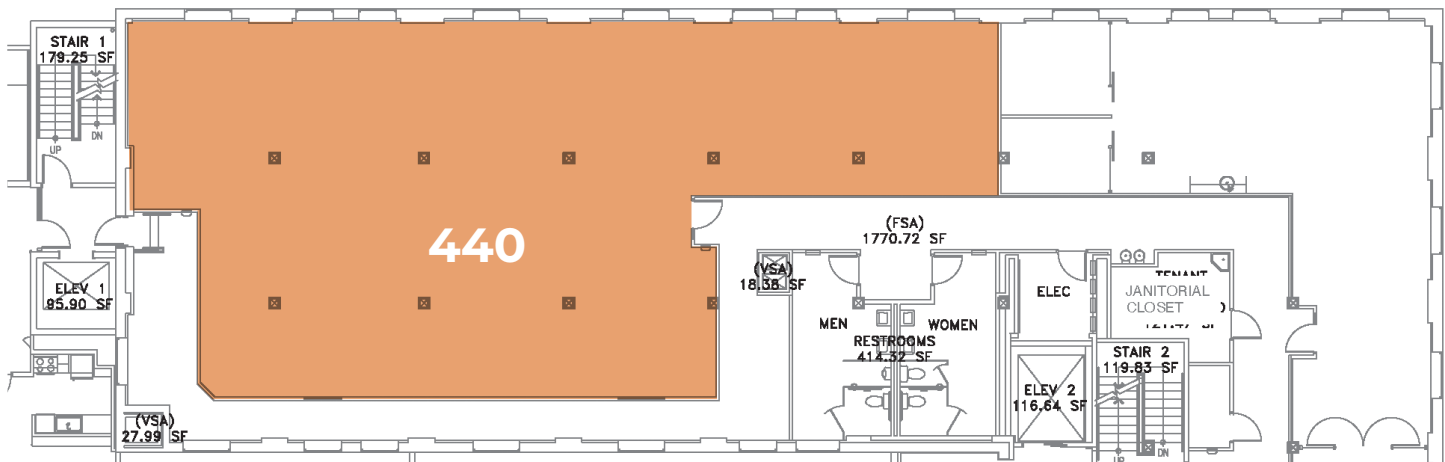
4TH FLOOR

RATE PSF \$22.00 FSEJ

SUITE	AVAILABLE SF
400	± 3,298
440	± 3,457



- Immediate availability, both suites vacant
- TI allowance available
- Suite 440 is ready for Tenant to customize build-out
- Abundant natural light



5TH FLOOR

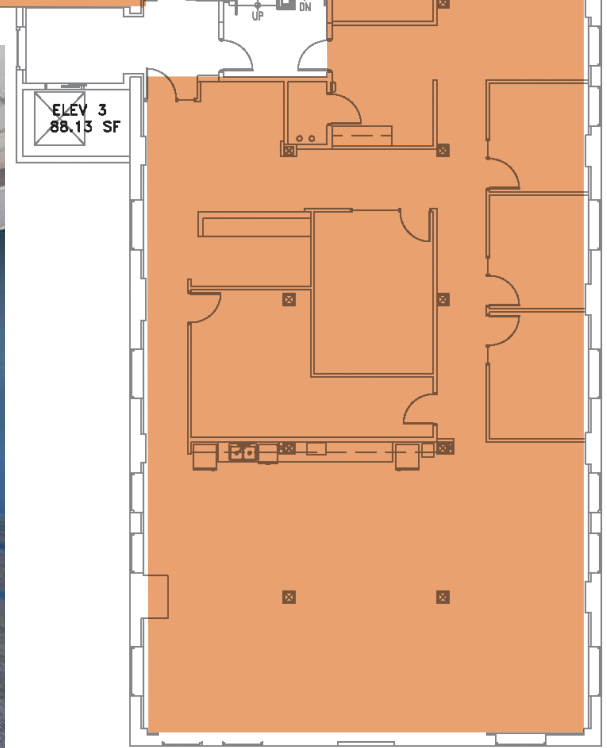
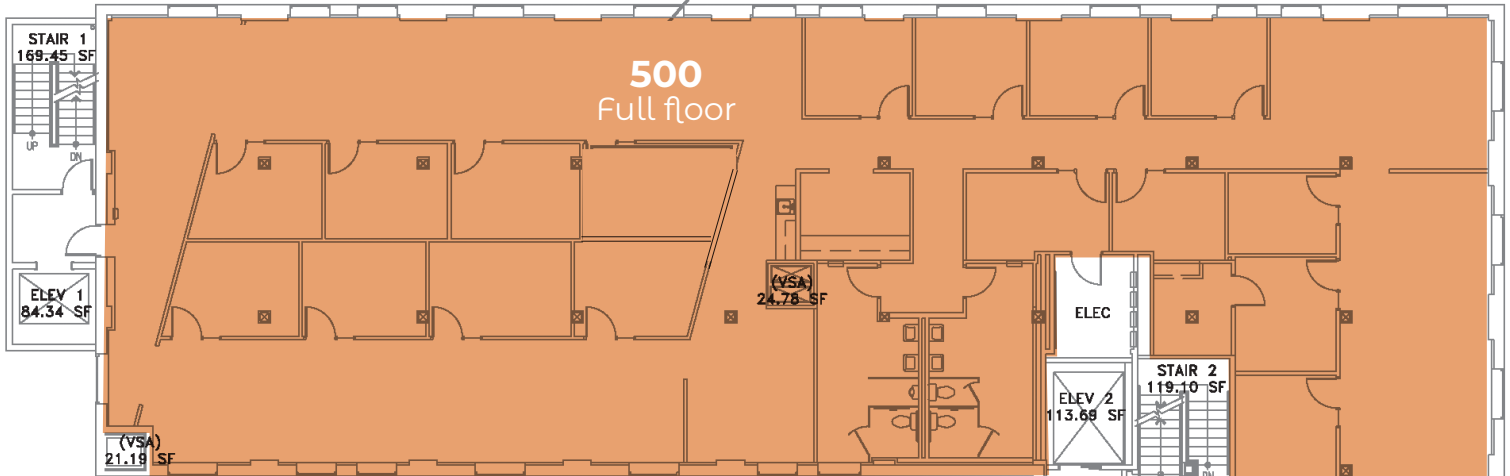
RATE PSF \$22.00 FSEJ

SUITE AVAILABLE SF

500

± 10,259

- Immediate availability
- Contact agent to schedule showing



DOWNTOWN BOISE

A growing economy in the Intermountain West

Boise and the larger metro area is home to Fortune 500 companies, small businesses and start-ups, universities, military and nonprofit organizations and many more. Among the numerous accolades, the city ranked # 1 for job growth and # 2 for the best run cities in America.[^] Boise has 210 days of sunshine and over 100 unique restaurants downtown. Come enjoy this lively, clean and vibrant city.

[^]Indeed and Wallethub 2021



3,225
BUSINESSES



40,333
POPULATION
(daytime)



24,306
POPULATION



75+
Annual Festivals

Eureka!



P.F. CHANG'S

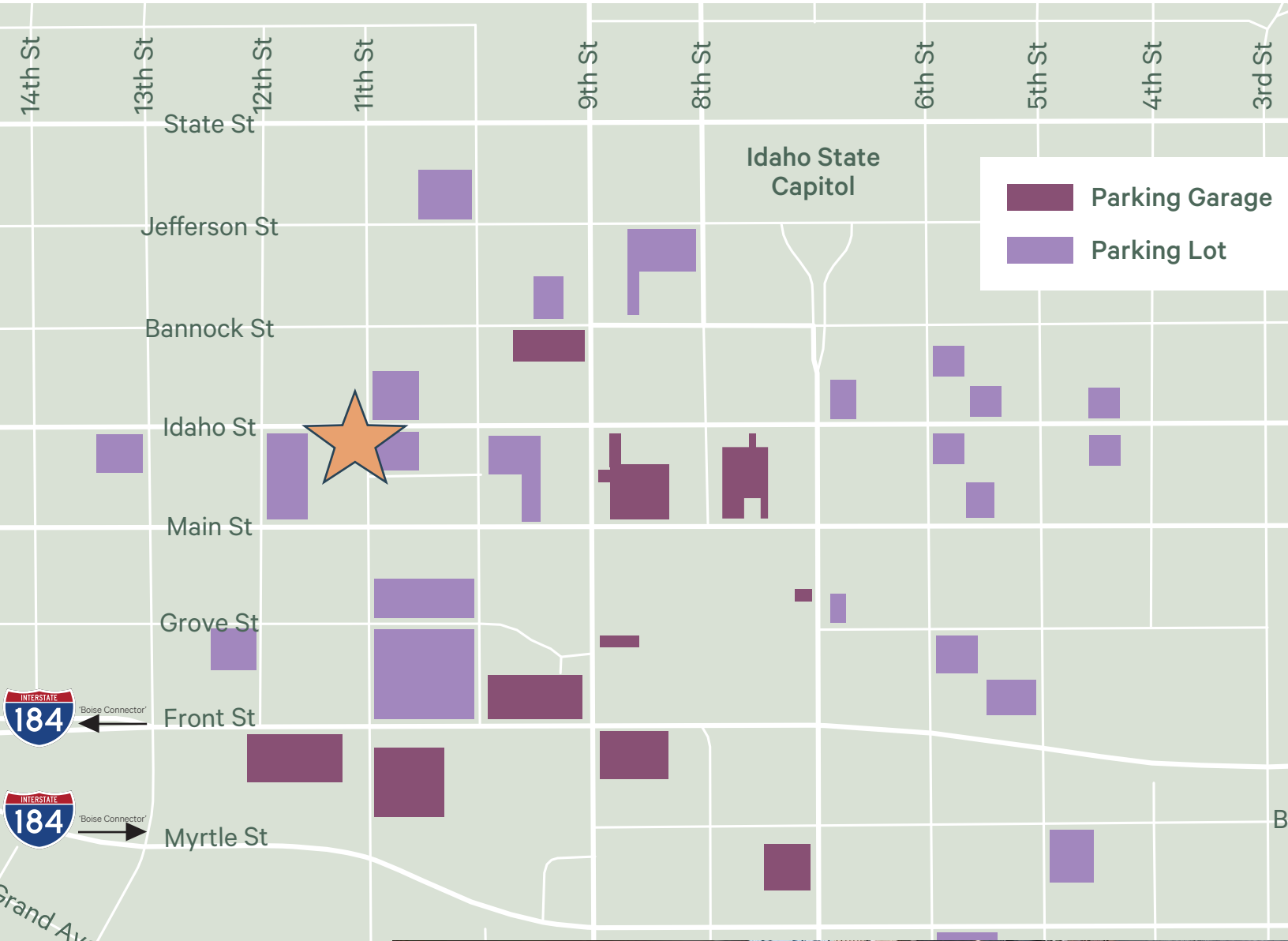


FIVE GUYS
FAMOUS
BURGERS and FRIES

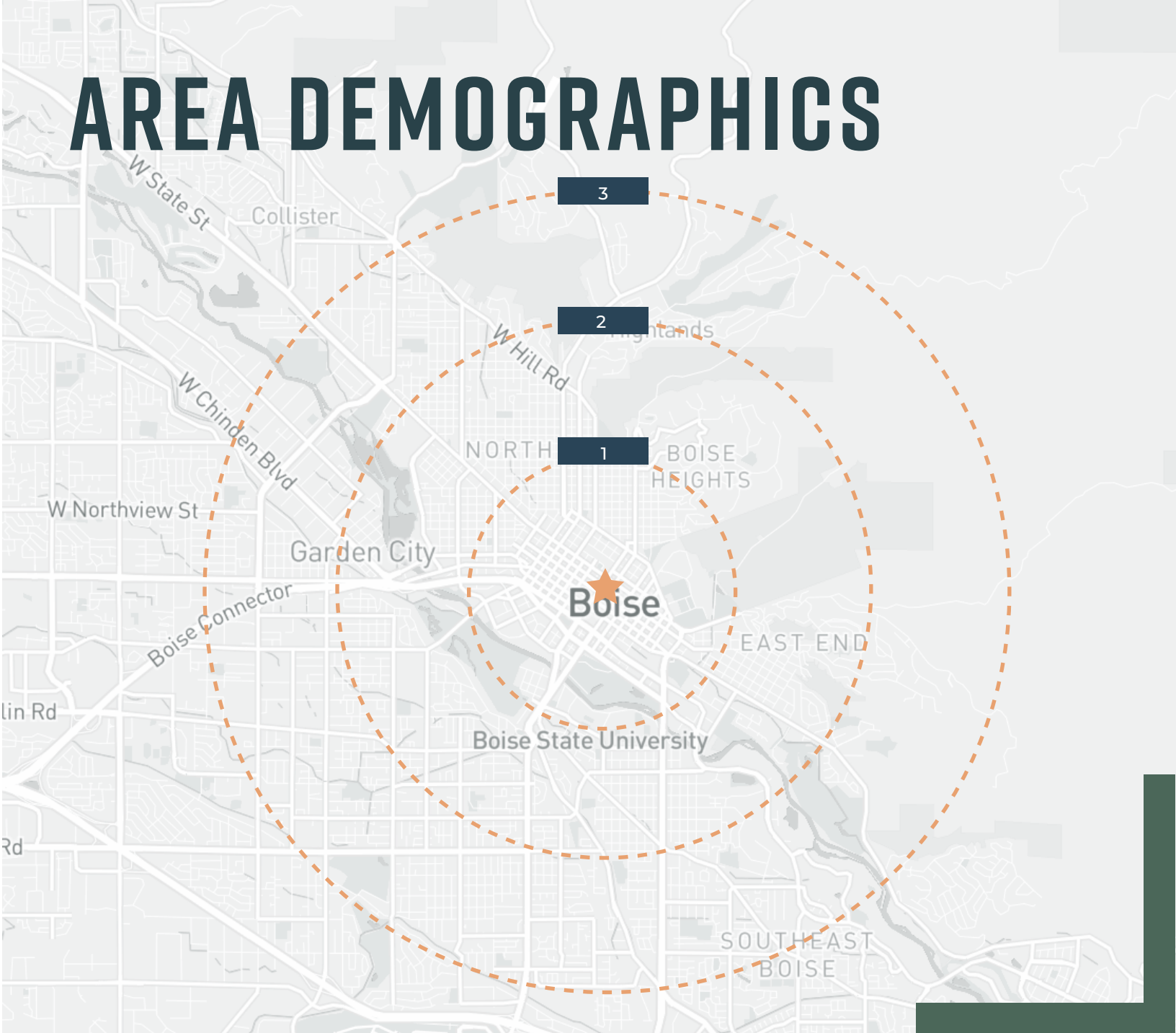
DUTCH BROS COFFEE



PARKING MAP



AREA DEMOGRAPHICS



DESTINATION

DISTANCE

8th Street Corridor

70 feet

Capitol Building

450 feet

The Grove

1/4 mile

BoDo

1/3 mile

Boise State University

1.5 miles

Boise Airport

4 miles

EMPLOYEES



1 Mile

52,066



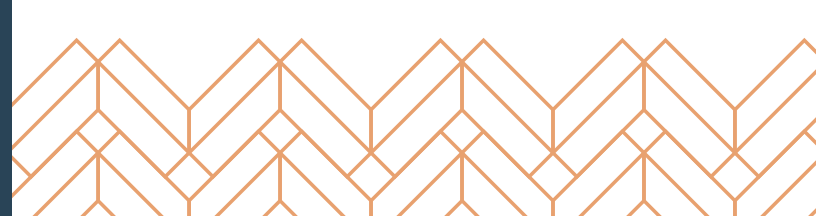
2 Miles

75,479



3 Miles

105,960





THE OWYHEE

1109 W MAIN STREET, BOISE, ID

Karena Gilbert
+1 208 488 3164
karena.gilbert@cbre.com

Melanie Nielsen
+1 208 678 6290
melanie.nielsen@cbre.com

Kyle Uhlenkott
+1 208 488 3161
kyle.uhlenkott@cbre.com

CBRE

© 2025 CBRE, Inc. All rights reserved. This information has been obtained from sources believed reliable, but has not been verified for accuracy or completeness. You should conduct a careful, independent investigation of the property and verify all information. Any reliance on this information is solely at your own risk. CBRE and the CBRE logo are service marks of CBRE, Inc. All other marks displayed on this document are the property of their respective owners, and the use of such logos does not imply any affiliation with or endorsement of CBRE. Photos herein are the property of their respective owners. Use of these images without the express written consent of the owner is prohibited.