

3668 ALBION

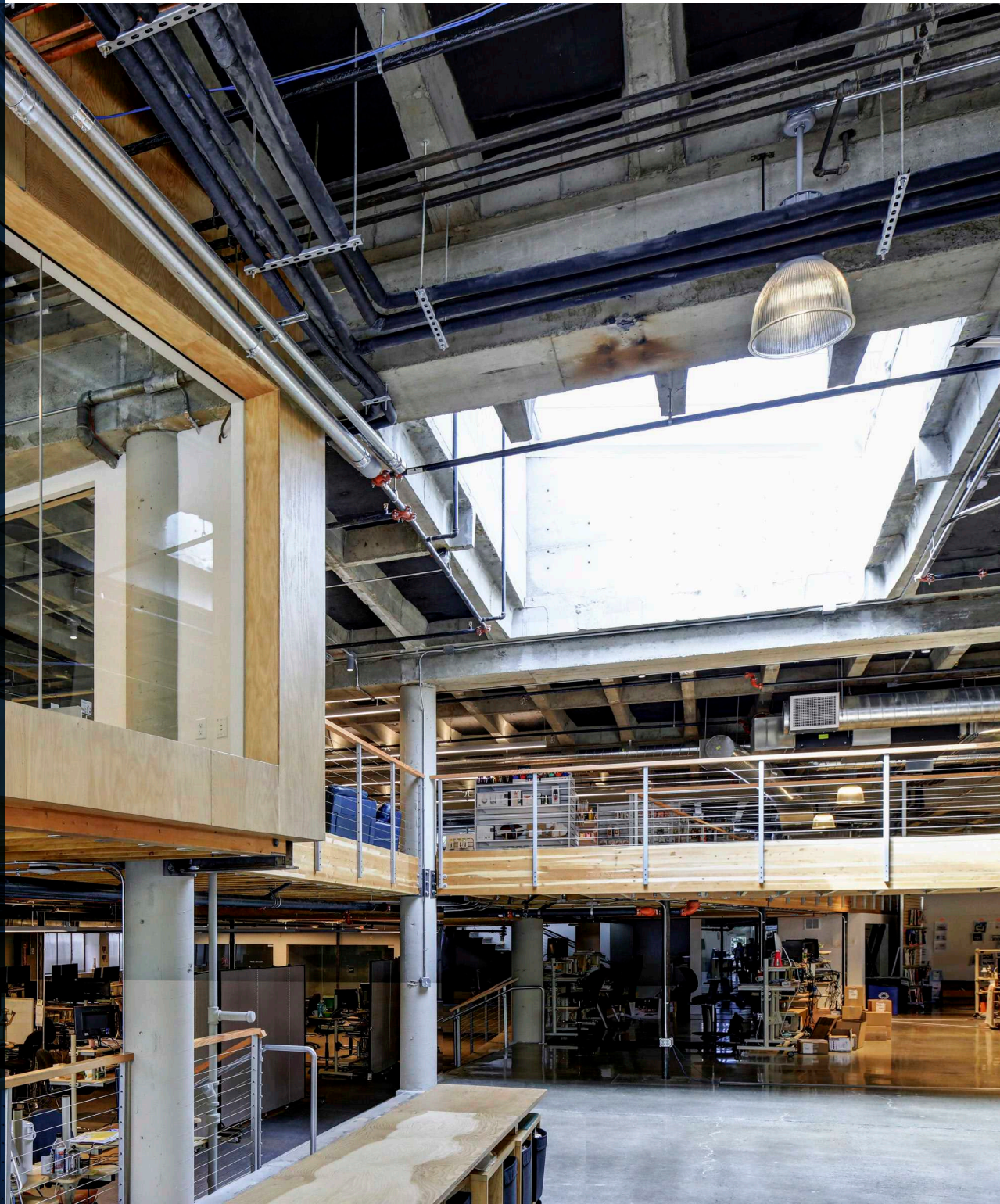
Creative Office & Flex
Space for Sale or Lease
4,207 - 22,685 SF Available

CAVAN O'KEEFE
Senior Managing Director
206.395.2903
cavan.okeefe@nrmk.com

CHARLIE FARRA
Executive Vice President
206.462.2552
charlie.farra@nrmk.com

BRODY O'KEEFE
Director
206.453.1463
brody.okeefe@nrmk.com

NEWMARK



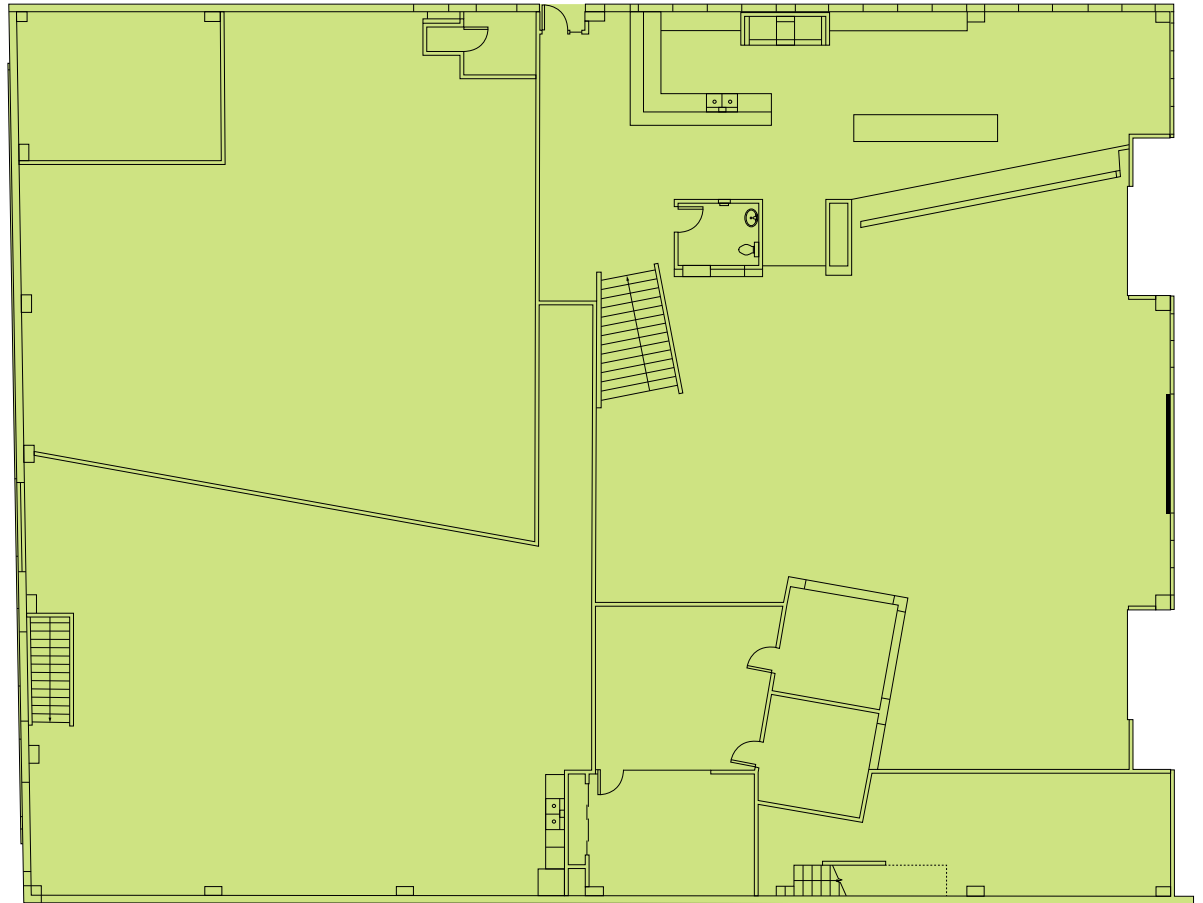


BUILDING FEATURES

- 18,477 RSF on the main level + mezzanine; 4,207 RSF on the top floor off the parking lot
- Exposed ceiling, skylights & electronic shades throughout provide a high-end creative office experience
- Upgraded climate control and acoustics for sound dampening
- Roll up doors and operable windows
- Bike storage with showers on-site
- Private single-occupant restrooms throughout the building
- 21 parking stalls along with abundant neighborhood parking

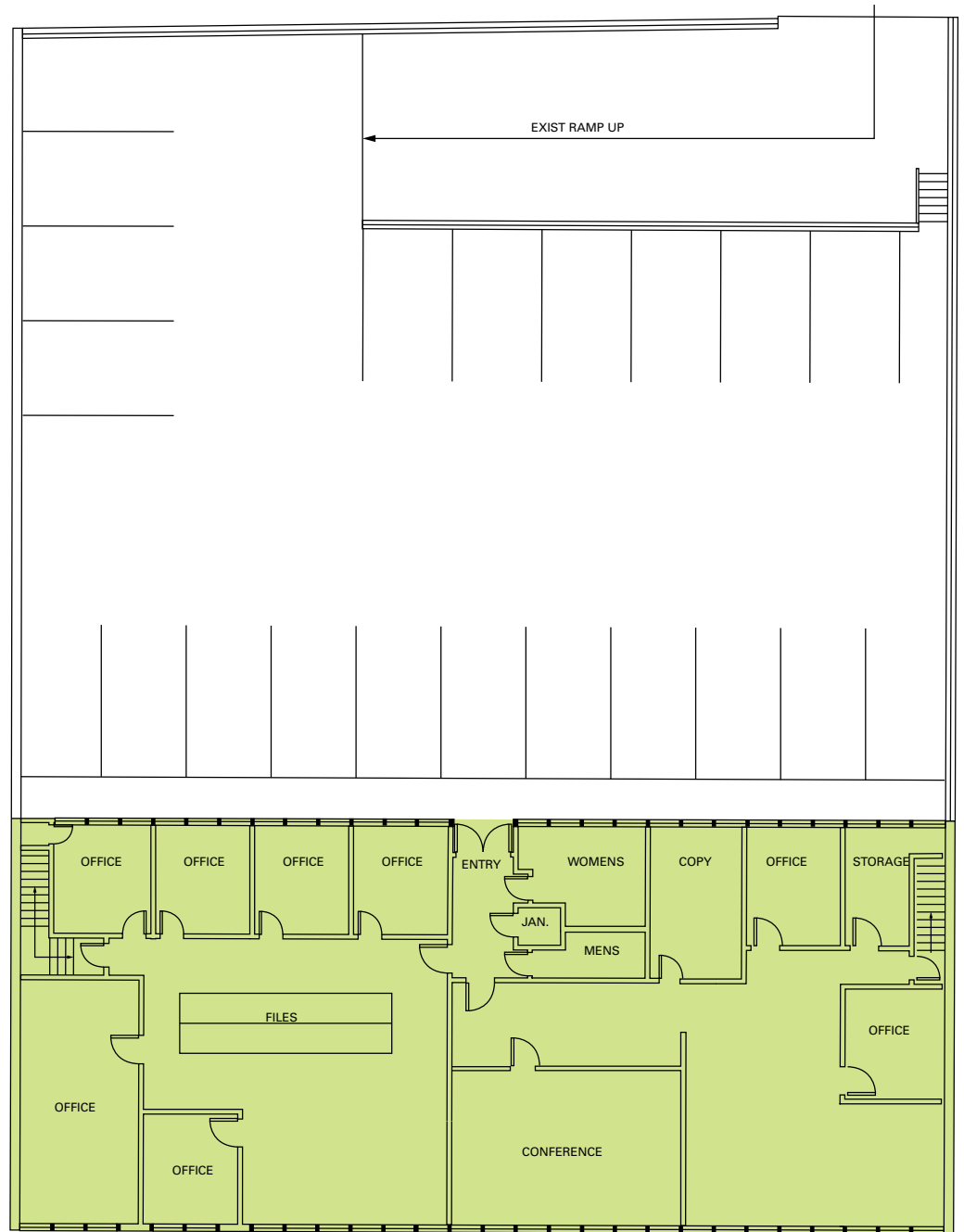
LOWER LEVEL & MEZZANINE

18,477 RSF Available Now



UPPER LEVEL

4,207 RSF Available Now



TRANSPORTATION AND AMENITIES

- Amenity-rich Fremont location with hundreds of restaurants, cafés, pubs, shops and more.
- Central location to Seattle’s major employers.
- This location provides easy access to SR-99, I-5, SR-520 and close proximity to numerous bus lines.



50+

Restaurants Within 3 Blocks



10+

Coffee Shops Within 3 Blocks



100

Rider’s Paradise Score



98

Walker’s Paradise Score





3668

ALBION

CAVAN O'KEEFE
Senior Managing Director
206.395.2903
cavan.okeefe@nrmk.com

CHARLIE FARRA
Executive Vice President
206.462.2552
charlie.farra@nrmk.com

BRODY O'KEEFE
Director
206.453.1463
brody.okeefe@nrmk.com

NEWMARK

The information contained herein has been obtained from sources deemed reliable but has not been verified and no guarantee, warranty or representation, either express or implied, is made with respect to such information. Terms of sale or lease and availability are subject to change or withdrawal without notice. 10781679307 | 12/25