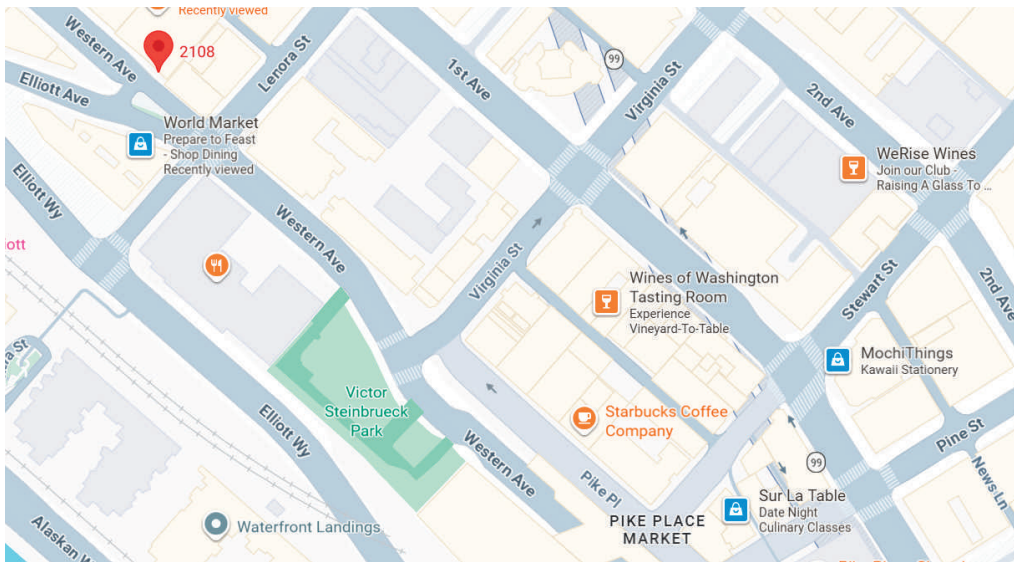


# FOR LEASE

RETAIL/OFFICE SPACE  
2108 WESTERN AVENUE | SEATTLE, 98121



## PROPERTY FEATURES

- Unique Belltown ground floor retail/office space available for lease.
- Located two blocks from the Pike Place Market (over 12 million visitors per year)
- Grade level roll up door entryway. Open office layout with mix of private offices. Brick and timber interiors.
- Available in fall 2026.
- Neighboring Cost Plus World Market, Cloudburst Brewing, El Gaucho, Seattle Athletic Club, Cutter's Crabhouse and many more.
- Rate: \$28.00/SF/YR + NNN (\$6.50/SF/YR)
- Square Footage: 4,800
- Please call brokers for more information and to arrange a tour.



CAMERON  
KENT

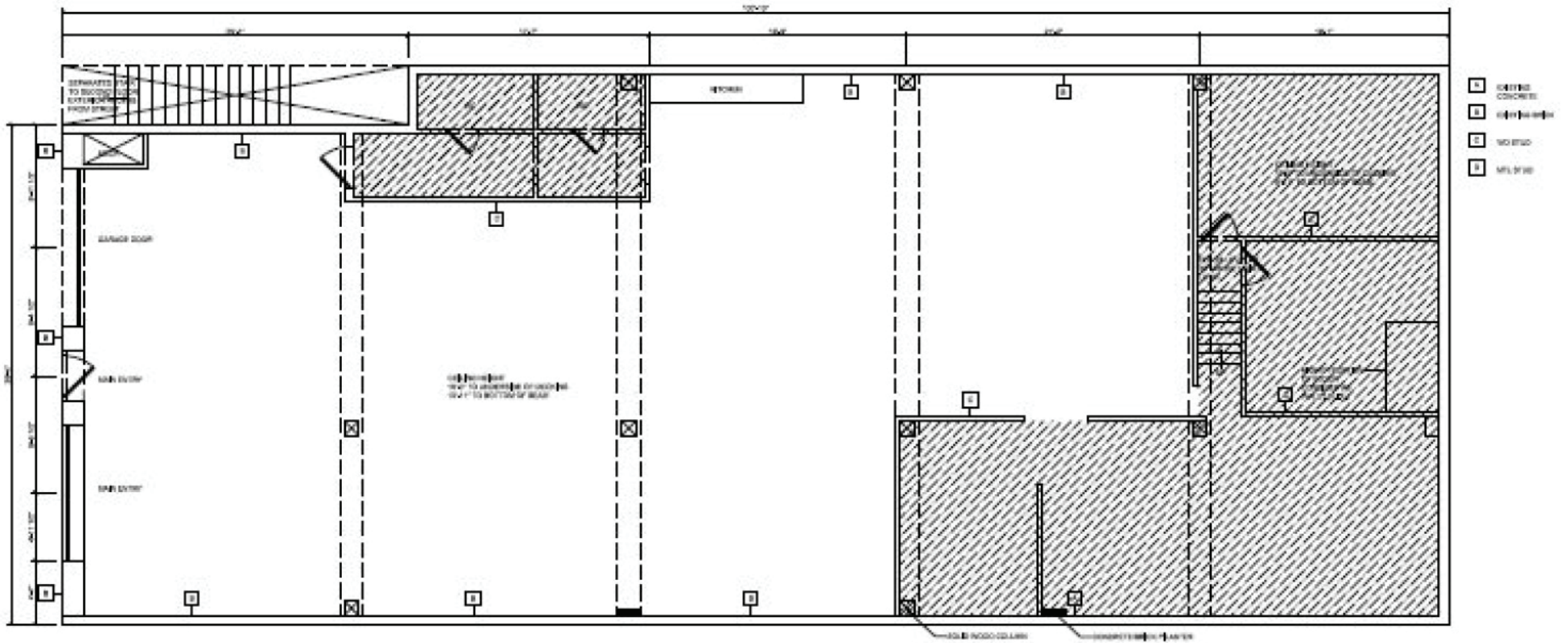
206.838.7737  
ckent@ewingandclark.com

TOM  
GRAFF

206.295.1445  
tomgraff@ewingandclark.com

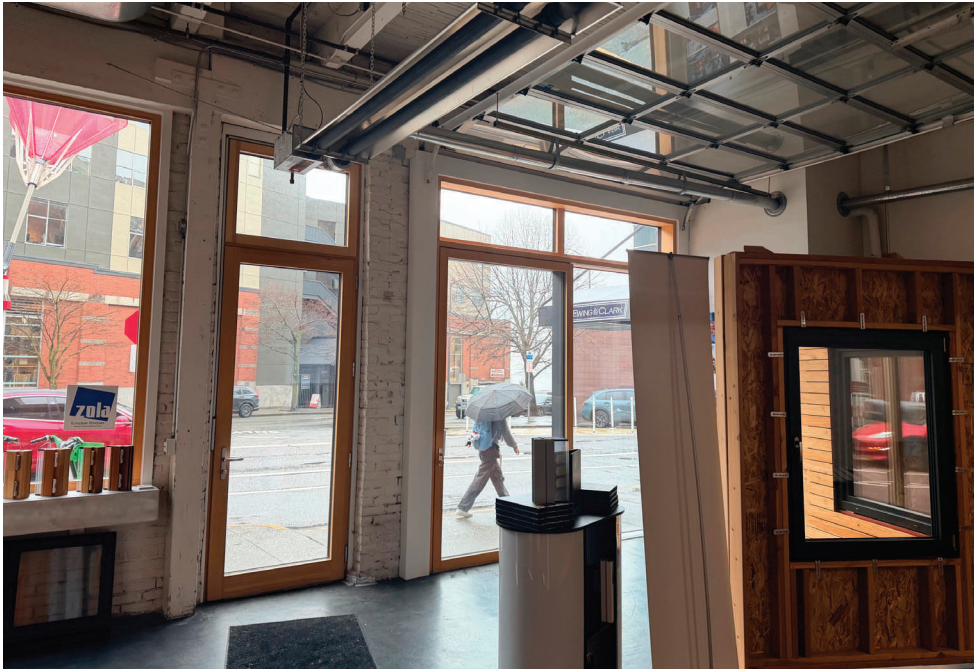
# FLOOR PLAN

2108 WESTERN AVENUE | SEATTLE, 98121



# PHOTOS

2108 WESTERN AVENUE | SEATTLE, 98121



# AERIAL MAP

2108 WESTERN AVENUE | SEATTLE, 98121



CAMERON  
KENT

206.838.7737  
ckent@ewingandclark.com

TOM  
GRAFF

206.295.1445  
tomgraff@ewingandclark.com