



OFFICE LEASE LOCATION

1402 BROADWAY ST
SUITE 203
LONGVIEW WA 98632

\$ 590

Includes Utilities

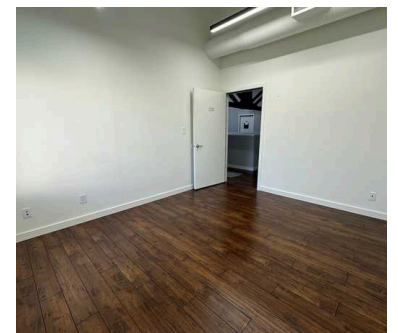
PER
MONTH

**SF
+/- 147**

SPACE
SIZE

ABOUT THE PROPERTY

Discover spacious, move-in-ready offices within this elegantly renovated office complex. Situated at 1402 Broadway in downtown Longview, this location offers proximity to the hospital and local banks, along with a vibrant community of co-tenants. Enjoy the convenience of shared amenities including kitchens, breakrooms, conference room and multiple restrooms. Utilities are included except phone & internet. Call today to schedule your tour.



PROPERTY DETAIL



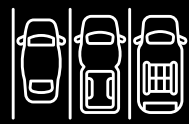
CLOSE TO
INTERSTATE 5



ZONED D-C
DOWNTOWN COMMERCE
DISTRICT



98
WALK SCORE



Parking
Off 14th Ave



woodfordcre.com



chris@woodfordcre.com

GET IN TOUCH

Chris Roewe
Owner/Broker

Lindsay Johnson
Licensed Assistant

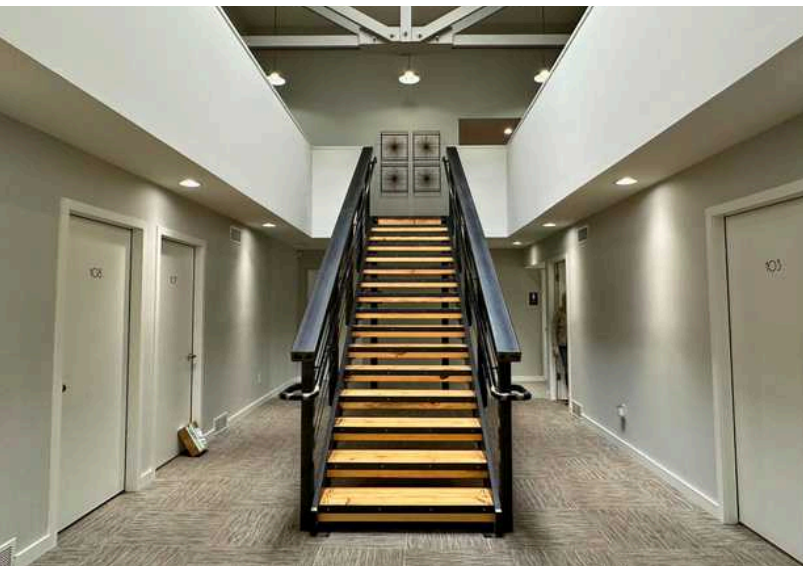


(360) 501-5500



lindsay@woodfordcre.com

OFFICE FOR LEASE



The information contained herein has been obtained from sources we understand to be reliable. Whilst we do not doubt its accuracy it has not been verified & we make no guarantees, warranty, or representations about it. Any projections, opinions, assumptions or estimates used are for example only. You & your advisors should conduct a careful independent investigation of the property to determine the property's satisfaction to your needs. © Woodford Commercial Real Estate.

