



LAKEVIEW PLACE

FOR LEASE

4,380 SF (Divisible) Office Space Available

6725 116TH AVE NE | KIRKLAND, WA

GARY GUENTHER
Executive Vice President
425.450.1154
gary.guenther@kidder.com

CHARLES CAPLICE
Senior Associate
425.450.1160
charles.caplice@kidder.com



*A premium office building located in Kirkland, which has been ranked as one of the best small cities in the U.S.**



**THREE-STORY
OFFICE
BUILDING**



**RENOVATED
COMMON
AREAS**



**COVERED
PARKING &
STORAGE**



**ROOFTOP
HVAC UNITS**



**VIEWS OF LAKE
WASHINGTON &
OLYMPIC MTS**



**ADJACENT TO
PICKLEBALL
COURTS**

Concrete and wood-framed premium office building

Passenger elevator serving all three floors

Recently upgraded with a new roof and HVAC system

Easy access to I-405

Close to Kirkland's amenities, bus line, and park & ride

Lots of windows and natural light

Adjacent to new Houghton Park & Play public pickleball courts

*Source: money.com "Best Places to Live 2022"

SUITE 200



SUITE 200
4,380 RSF

4,380 RSF

AVAILABLE

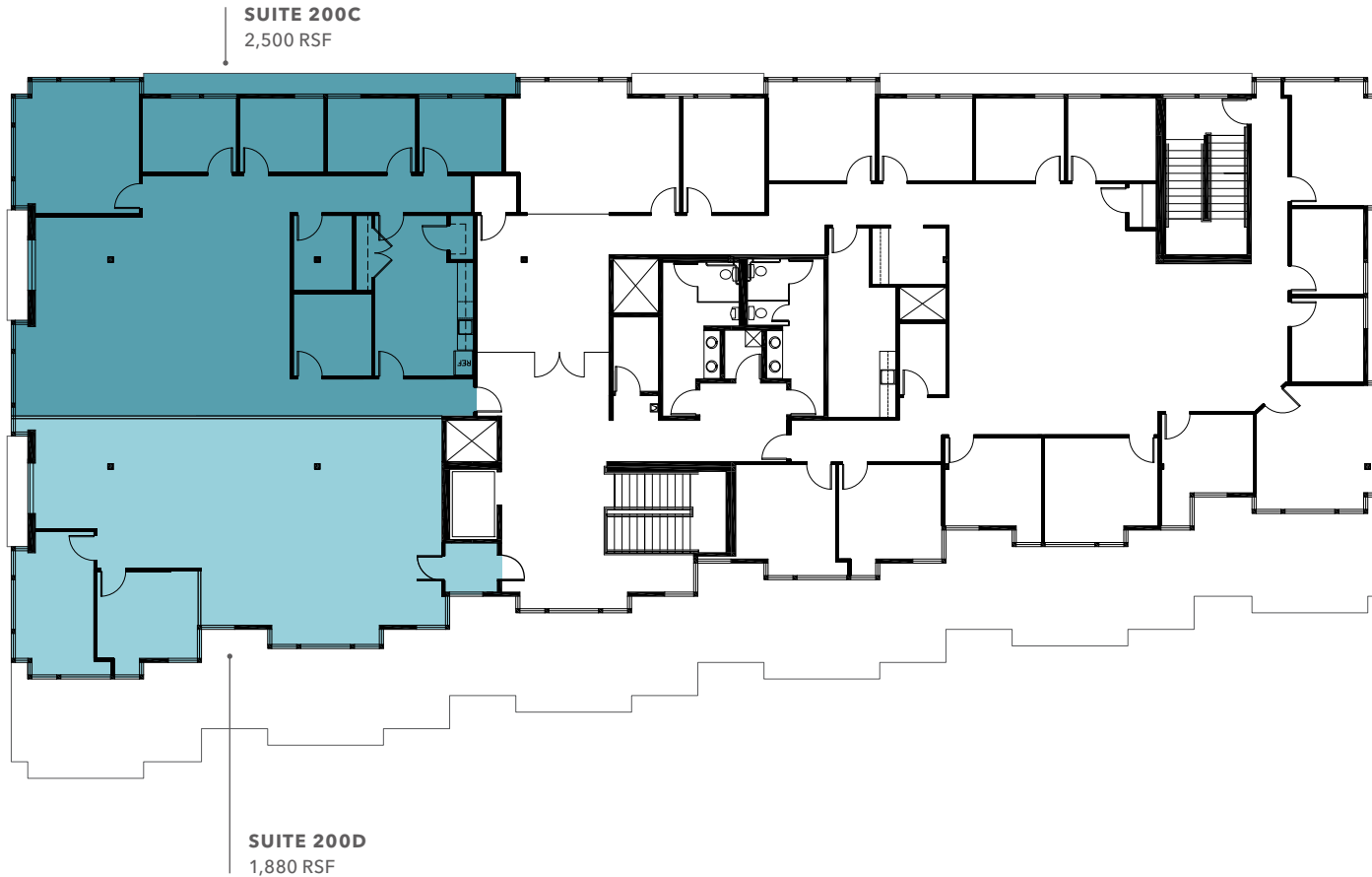
\$29.00/SF

ANNUAL RENTAL RATE, NNN

NOW

AVAILABLE

SUITE 200 - DEMISING PLAN 2



2,500 RSF

SUITE 200C TOTAL SF

1,880 RSF

SUITE 200D TOTAL SF

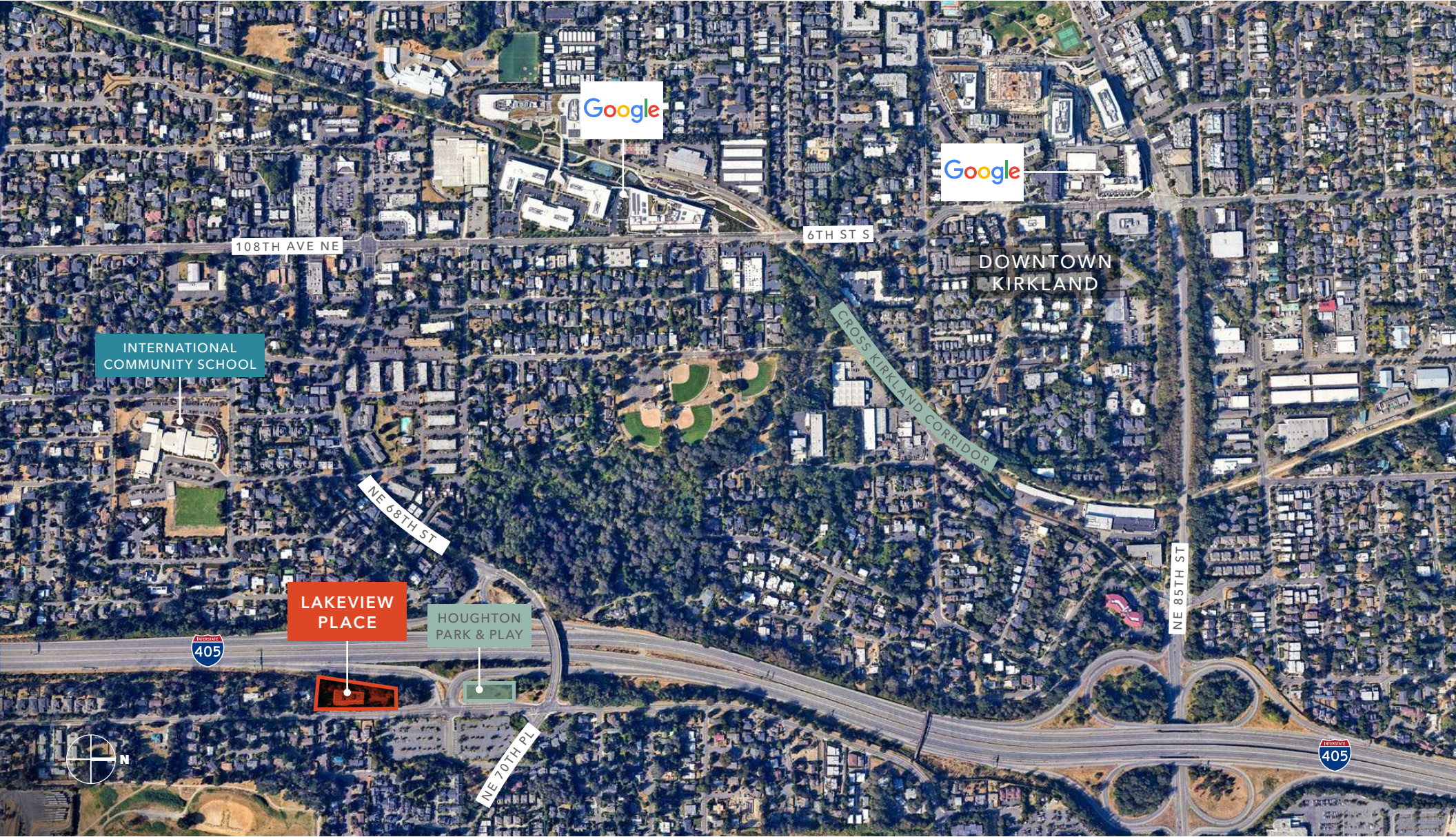
\$29.00/SF

ANNUAL RENTAL RATE, NNN

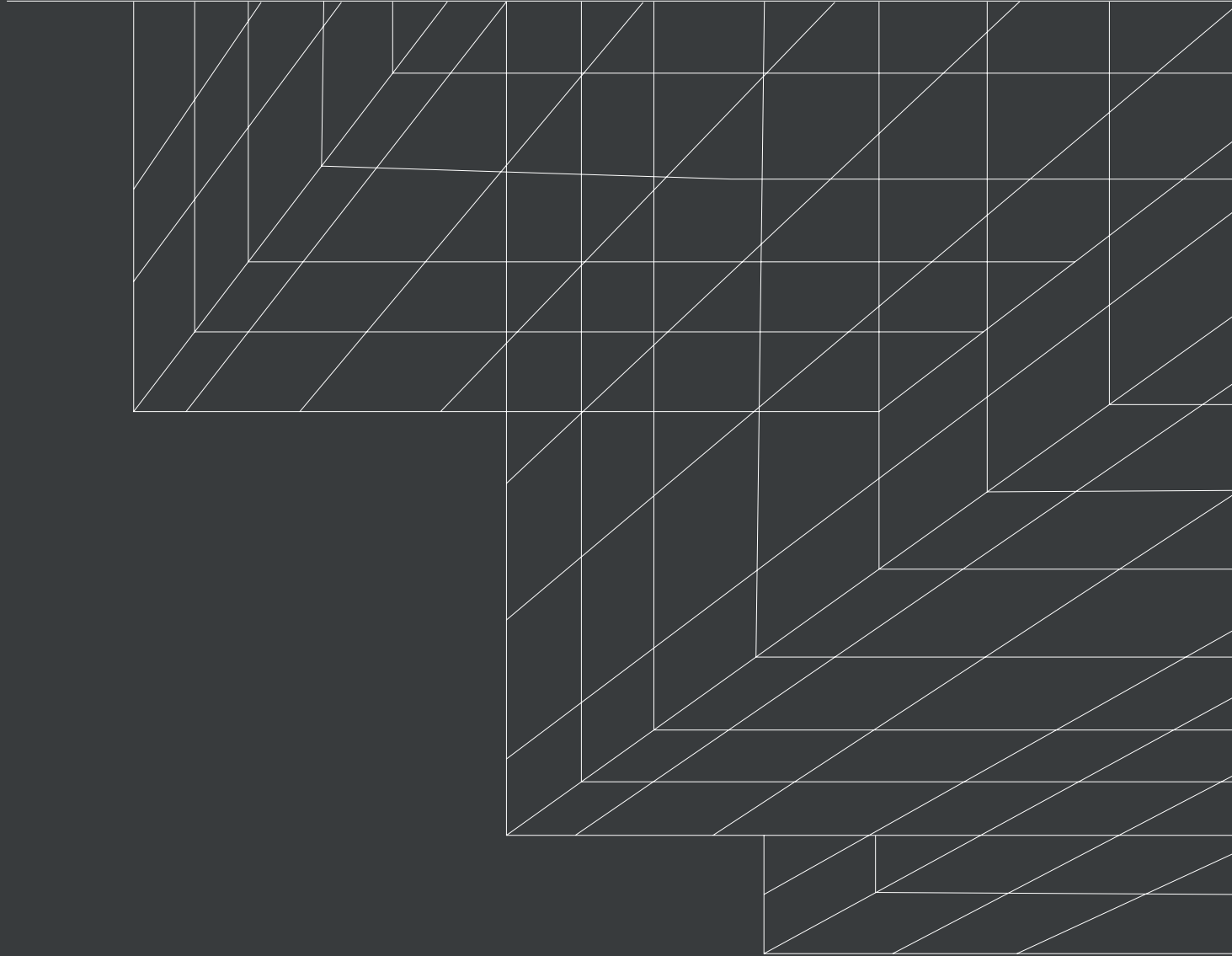
NOW

AVAILABLE

LAKEVIEW PLACE



LAKEVIEW PLACE



*For more information about
this property, please contact*

GARY GUENTHER

Executive Vice President
425.450.1154
gary.guenther@kidder.com

CHARLES CAPLICE

Senior Associate
425.450.1160
charles.caplice@kidder.com

KIDDER.COM

This information supplied herein is from sources we deem reliable. It is provided without any representation, warranty, or guarantee, expressed or implied as to its accuracy. Prospective Buyer or Tenant should conduct an independent investigation and verification of all matters deemed to be material, including, but not limited to, statements of income and expenses. Consult your attorney, accountant, or other professional advisor. All Kidder Mathews designs are the sole property of Kidder Mathews. Branded materials and layouts are not authorized for use by any other firm or person.

