



For Lease | Warehouse with Yard

135 S Lucile St, Seattle WA

Located in the desirable Seattle Georgetown area just off 1st Ave South and near E Marginal Way.

PROPERTY HIGHLIGHTS

- + 8,700 SF total with approximately 1,200 SF of mezzanine
- + 5,000 SF fenced yard
- + 16' Clear Height
- + 1 GL loading door
- + Heavy power
- + Multiple floor drains
- + Minutes from Downtown Seattle and all major highways including I-5, SR-99, and I-90
- + Lease rate \$1.20 psf NNN

UNIT SF

8,700 SF

MEZZANINE SF

1,200 SF

PRICE/SF

\$1.20, NNN

HANS SWENSON

Partner
+1 425 586 5630
hswenson@nai-pp.com

TAMIR OHAYON

Partner
+1 425 586 5627
tohayon@nai-pp.com

ALLY BRADEN

Associate
+1 425 586 5649
abraden@nai-pp.com

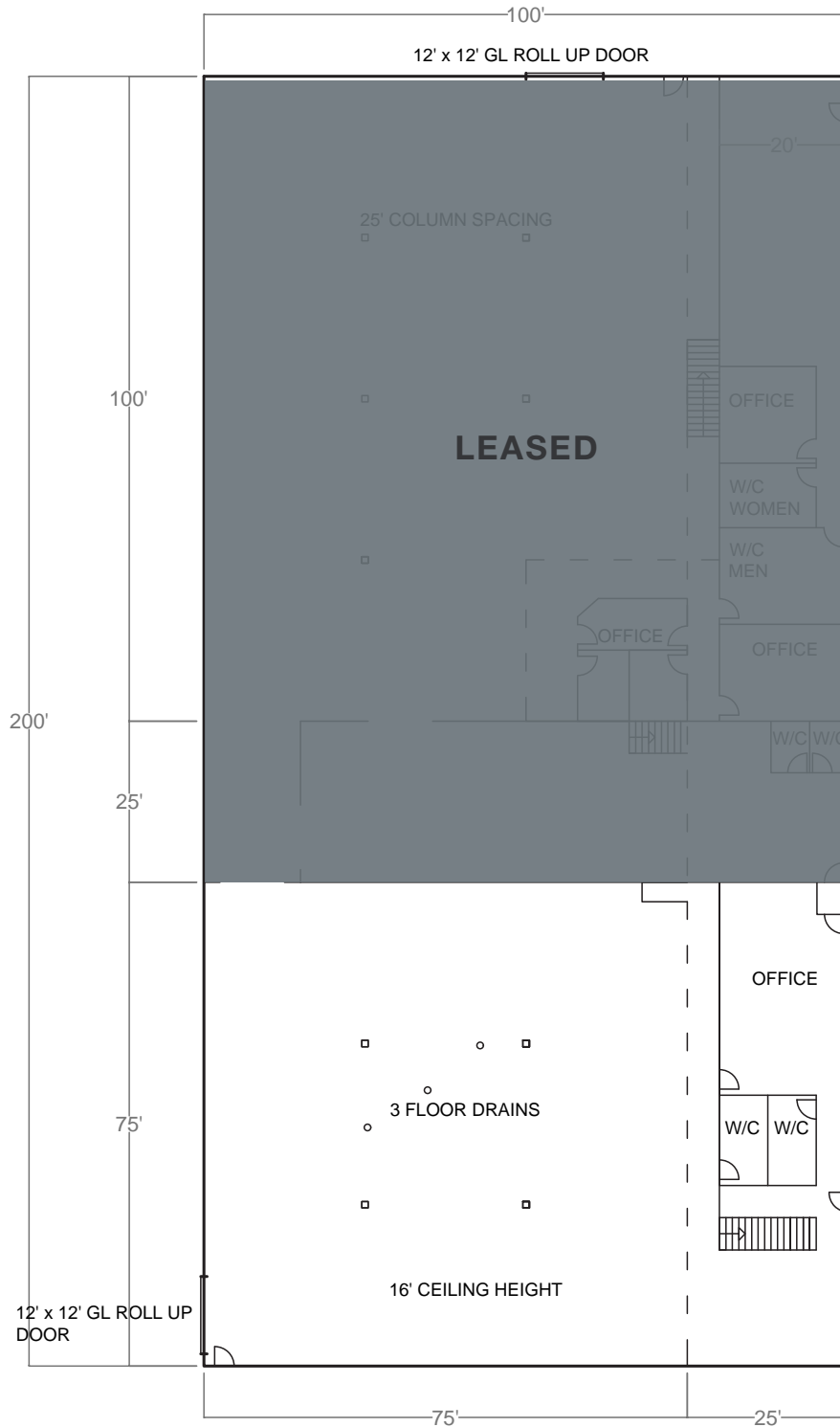
ETHAN ARONOWITZ

Associate
+1 425 586 5612
earonowitz@nai-pp.com



THE INFORMATION CONTAINED HEREIN HAS BEEN GIVEN TO US BY THE OWNER OF THE PROPERTY OR OTHER SOURCES WE DEEM RELIABLE, WE HAVE NO REASON TO DOUBT ITS ACCURACY, BUT WE DO NOT GUARANTEE IT. ALL INFORMATION SHOULD BE VERIFIED PRIOR TO PURCHASE OR LEASE.

Floor Plan



HANS SWENSON

Partner
+1 425 586 5630
hswenson@nai-pp.com

TAMIR OHAYON

Partner
+1 425 586 5627
tohayon@nai-pp.com

ALLY BRADEN

Associate
+1 425 586 5649
abraden@nai-pp.com

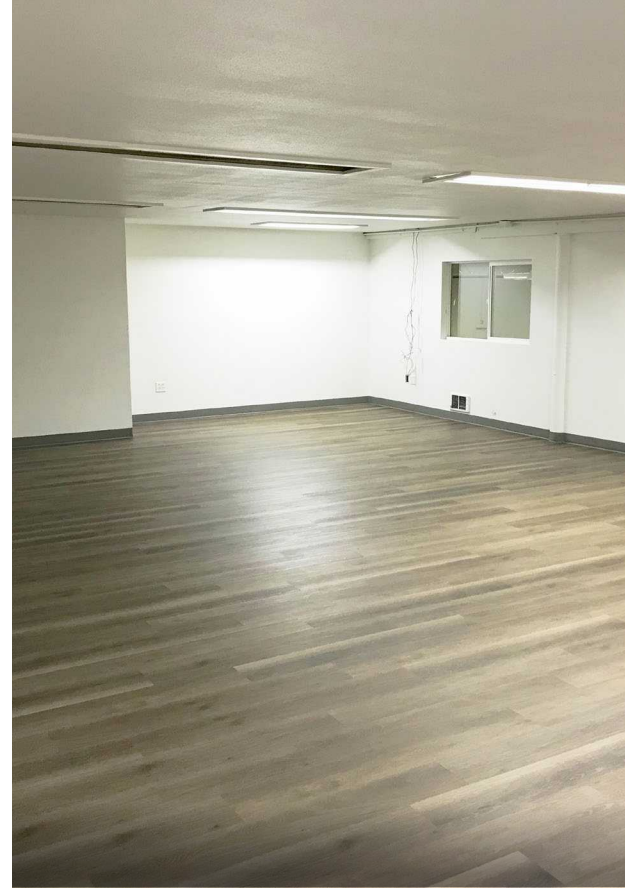
ETHAN ARONOWITZ

Associate
+1 425 586 5612
earonowitz@nai-pp.com





*Space for lease in
Georgetown Seattle*



HANS SWENSON

Partner
+1 425 586 5630
hswenson@nai-psp.com

TAMIR OHAYON

Partner
+1 425 586 5627
tohayon@nai-psp.com

ALLY BRADEN

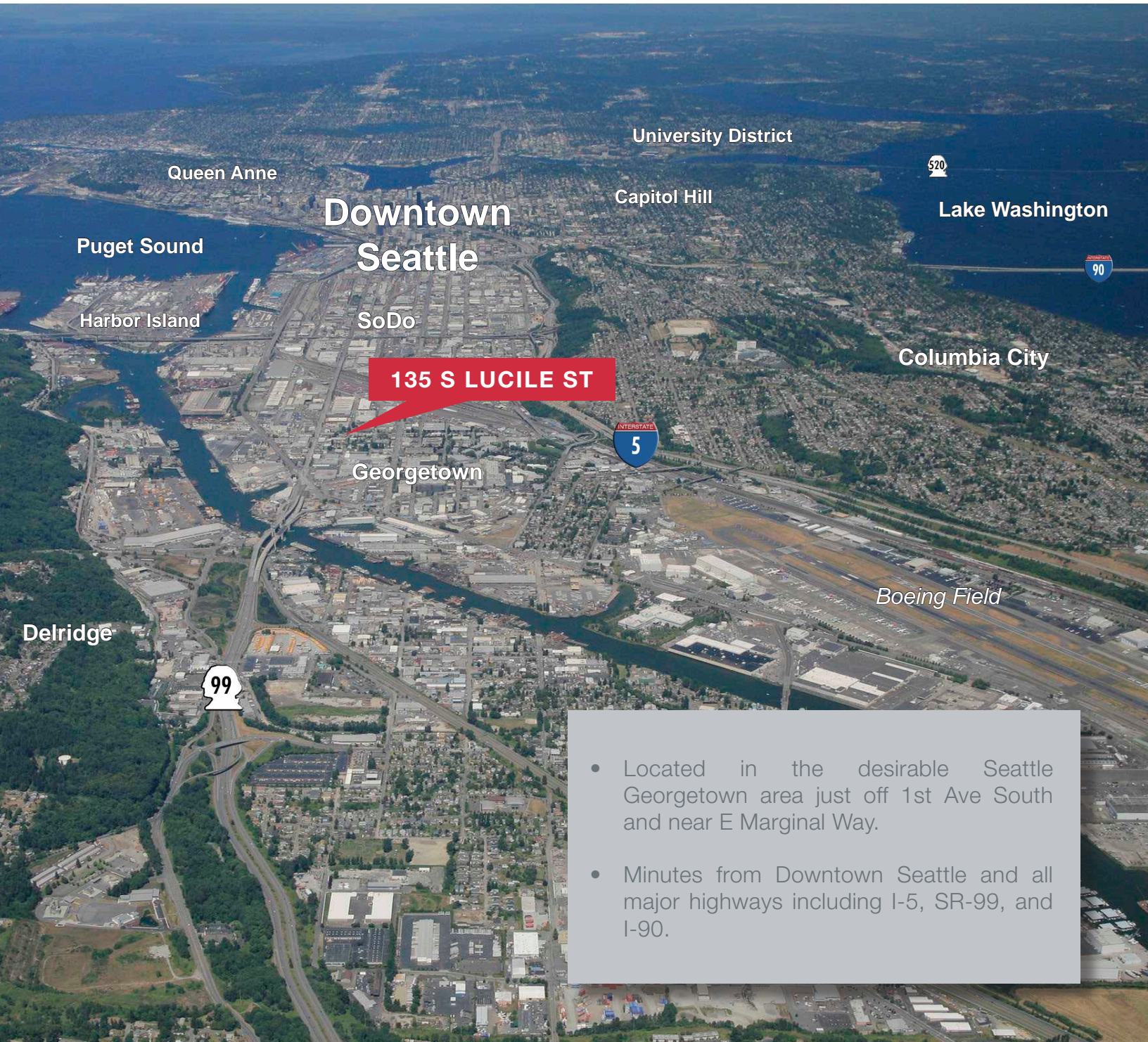
Associate
+1 425 586 5649
abraden@nai-psp.com

ETHAN ARONOWITZ

Associate
+1 425 586 5612
earonowitz@nai-psp.com



Area Map



135 S LUCILE ST

- Located in the desirable Seattle Georgetown area just off 1st Ave South and near E Marginal Way.
- Minutes from Downtown Seattle and all major highways including I-5, SR-99, and I-90.

HANS SWENSON

Partner
+1 425 586 5630
hswenson@nai-psp.com

TAMIR OHAYON

Partner
+1 425 586 5627
tohayon@nai-psp.com

ALLY BRADEN

Associate
+1 425 586 5649
abraden@nai-psp.com

ETHAN ARONOWITZ

Associate
+1 425 586 5612
earonowitz@nai-psp.com

