

CITY CENTER PLAZA

101 South Capitol Boulevard, Boise, Idaho 83702

746 - 14,635 RSF - \$24.00 - \$28.00/RSF



FOR LEASE



Google Earth 360 View - Click Here

PROPERTY HIGHLIGHTS

Suite 100	4,531 RSF	\$26.00/RSF NNN
Suite 101	3,490 RSF	\$28.00/RSF NNN
Suite 104	746 RSF	\$26.00/RSF NNN
Combined	8,767 RSF	\$28.00/RSF NNN
Suite 203	1,973 RSF	\$26.00/RSF FS
Suite 300	6,385 RSF	\$26.00/RSF FS
Suite 303	1,073 RSF	\$26.00/RSF FS
Suite 402	2,883 RSF	\$26.00/RSF FS
Suite 500	3,288 RSF	\$26.00/RSF FS
Suite 501	2,319 RSF	\$26.00/RSF FS
Suite 503	2,064 RSF	\$26.00/RSF FS
Suite 504	2,752 RSF	\$26.00/RSF FS
Suite 505	1,902 RSF	\$24.00/RSF FS
Combined	12,325 RSF	\$26.00/RSF FS
Suite 603	2,848 RSF	\$26.00/RSF FS
Suite 910	7,463 RSF	\$26.00/RSF FS
Suite 1201	4,318 RSF	\$28.00/RSF FS
Floor 14	14,635 RSF	\$28.00/RSF FS
Suite 1600	9,898 RSF	\$28.00/RSF FS
Suite 1601	3,206 RSF	\$28.00/RSF FS
Combined	13,104 RSF	\$23.00/RSF FS

PROPERTY DETAILS

- Class A office suites in Downtown Boise
- Concierge services & parking garage on-site
- Valet parking, shower facilities & lockers
- [100% Renewable energy credits](#)

SURROUNDING AMENITIES

- [Grove Fitness Club & Spa](#)
- [Several restaurants & a bustling nightlife & entertainment atmosphere & The Warehouse](#)
- [Idaho Central Arena](#) - Home to numerous events & Idaho's only professional ECHL hockey team - [The Idaho Steelheads](#)
- [The Grove Plaza](#) has attracted millions of visitors since 1989 & in 2018 was awarded the Gold Award of Excellence in Economic Development - Events include [Alive After Five](#), [Capital City Public Market](#), & the [holiday tree lighting](#)
- [Boise Centre](#) is Idaho's largest convention center at 86,000 SF and can accommodate groups from 10 - 2,000 People

JENNIFER MCENTEE

Senior Director
Office | Capital Markets
+1 208 287 9495
jennifer.mcentee@cushwake.com

BREE WELLS

Director
Office | Capital Markets
+1 208 287 9492
bree.wells@cushwake.com

BRAYDON TORRES

Associate
Office | Capital Markets
+1 208 207 9485
braydon.torres@cushwake.com

©2024 Cushman & Wakefield. All rights reserved. The information contained in this communication is strictly confidential. This information has been obtained from sources believed to be reliable but has not been verified. No warranty or representation, express or implied, is made as to the condition of the property (or properties) referenced herein or as to the accuracy or completeness of the information contained herein, and same is submitted subject to errors, omissions, change of price, rental or other conditions, withdrawal without notice, and to any special listing conditions imposed by the property owner(s). Any projections, opinions or estimates are subject to uncertainty and do not signify current or future property performance.

CITY CENTER PLAZA

101 South Capitol Boulevard, Boise, Idaho 83702

746 - 14,635 RSF - \$24.00 - \$28.00/RSF



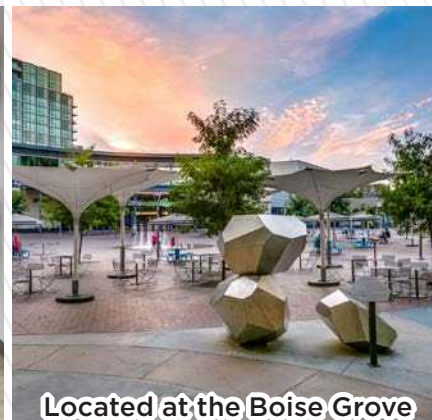
FOR LEASE



Conference Center



Bike Sharing Service



Located at the Boise Grove



PROPERTY AMENITIES

- **The City Center Plaza** offers Class A interior finishes, beautiful views of the valley, valet parking, shared conference room with a total seating capacity of 124 people, on-site shower facilities and lockers, and is located in the heart of Downtown Boise
- **Concierge Services Include** dry cleaning with office delivery & pickup, on-site car washes, detailing, oil changes, and windshield repair, and bike share service
- **Part of the Boise Grove** with close proximity to public transportation, entertainment and a bustling retail & office atmosphere - direct access to the Interstate 84 connector which connects the Treasure Valley
- **Surrounding Retail/Restaurant Tenants Include** Wells Fargo, Buffalo Wild Wings, Dutch Bros Coffee, Negranti Creamery, Tropical Smoothie Cafe, Boise State University Bronco Shop, Lucky Fins Seafood Grill, Costa Vida, Trillium Restaurant, Flat Bread, Chandlers, Five Guys, Bardenay Restaurant & Distillery, Old Chicago, Ruth's Chris, several law firms & other professional services

JENNIFER MCENTEE

Senior Director
Office | Capital Markets
+1 208 287 9495
jennifer.mcentee@cushwake.com

BREE WELLS

Director
Office | Capital Markets
+1 208 287 9492
bree.wells@cushwake.com

BRAYDON TORRES

Associate
Office | Capital Markets
+1 208 207 9485
braydon.torres@cushwake.com

999 West Main Street, Ste 1300

Boise, Idaho 83702
Main +1 208 287 9500
Fax +1 208 287 9501
cushmanwakefield.com

CITY CENTER PLAZA

101 South Capitol Boulevard, Boise, Idaho 83702

746 - 14,635 RSF - \$24.00 - \$28.00/RSF

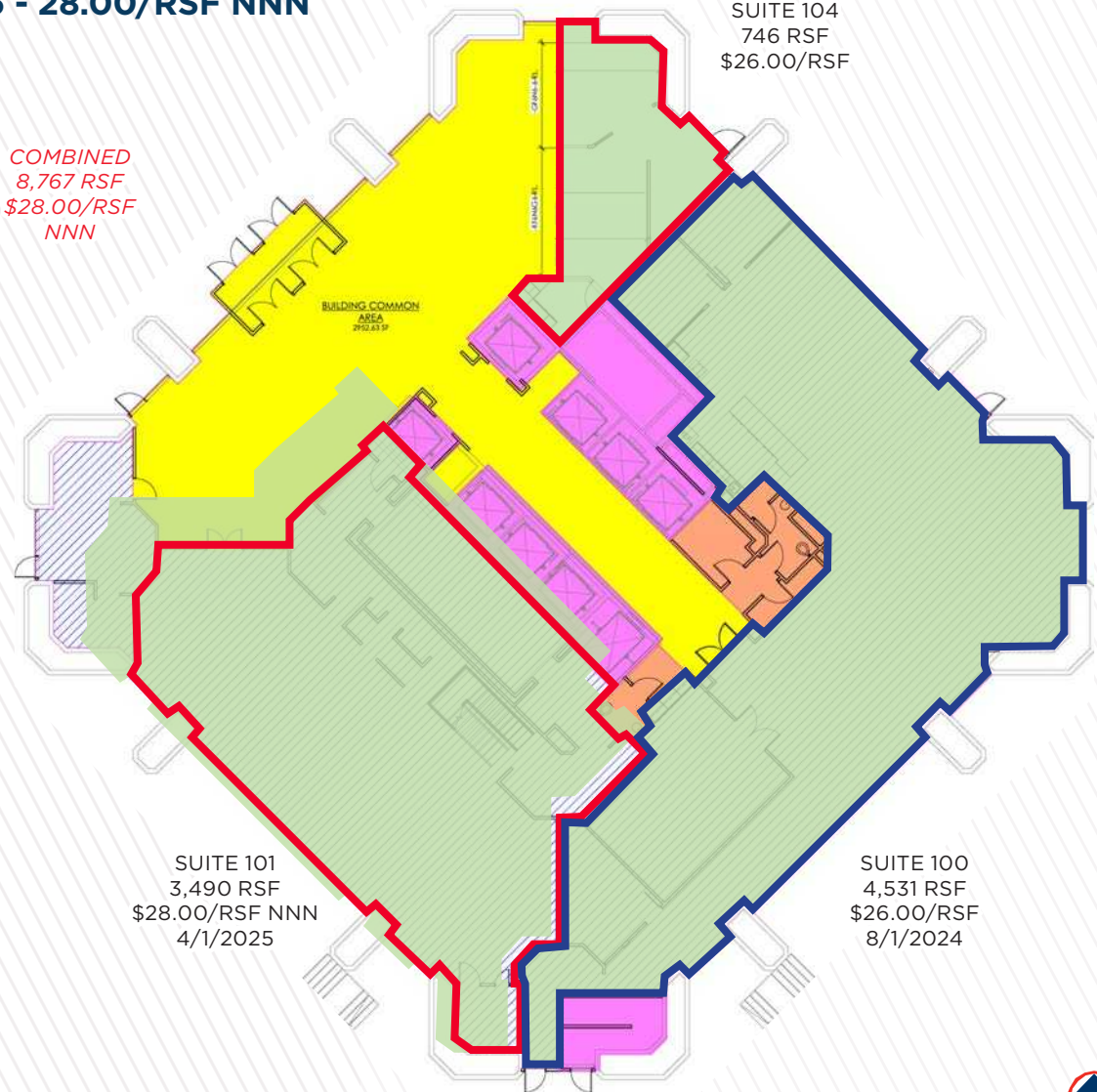


FOR LEASE

FIRST FLOOR RETAIL - 746 - 8,767 RSF - \$26 - 28.00/RSF NNN



COMBINED
8,767 RSF
\$28.00/RSF
NNN



CITY CENTER PLAZA

101 South Capitol Boulevard, Boise, Idaho 83702

746 - 14,635 RSF - \$24.00 - \$28.00/RSF



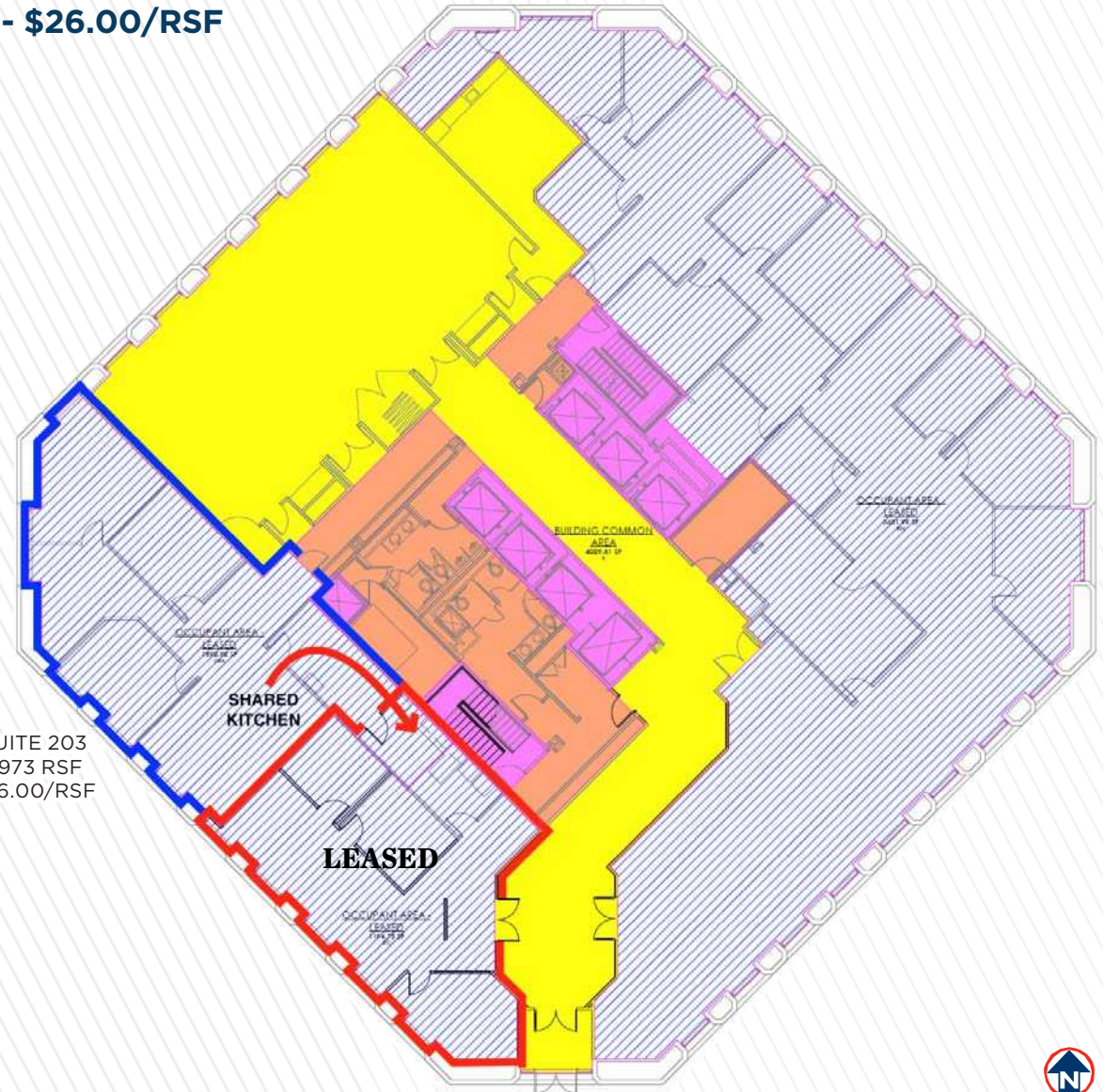
CUSHMAN & WAKEFIELD

FOR LEASE

SECOND FLOOR AVAILABILITY - 1,973 RSF - \$26.00/RSF



SUITE 203
1,973 RSF
\$26.00/RSF



CITY CENTER PLAZA

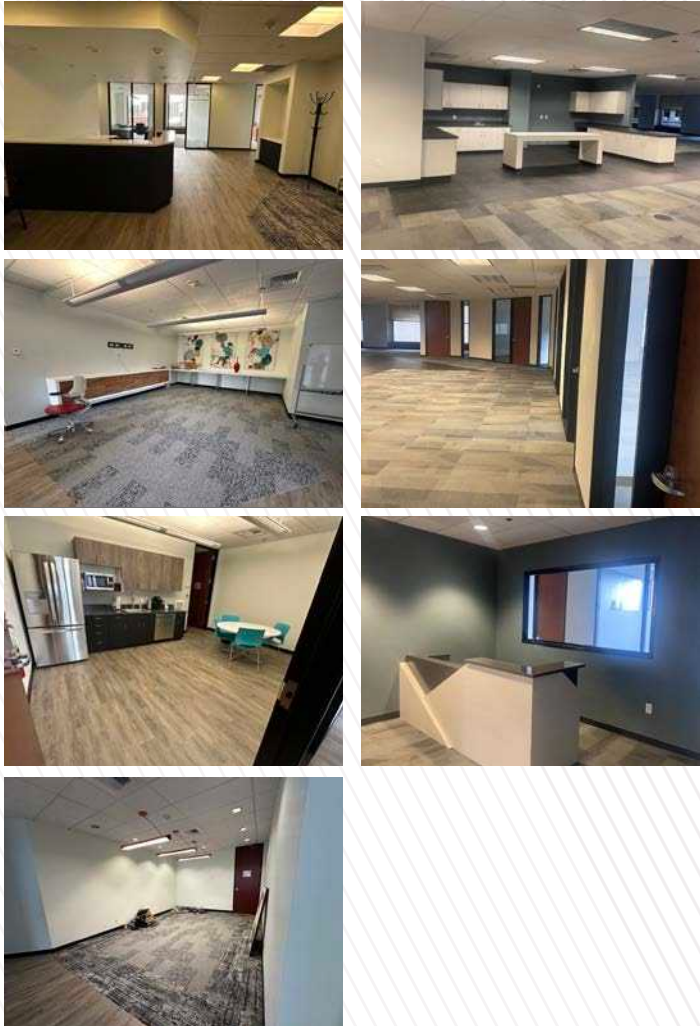
101 South Capitol Boulevard, Boise, Idaho 83702

746 - 14,635 RSF - \$24.00 - \$28.00/RSF



FOR LEASE

THIRD FLOOR AVAILABILITY - 1,073 - 6,693 RSF - \$26.00/RSF



CITY CENTER PLAZA

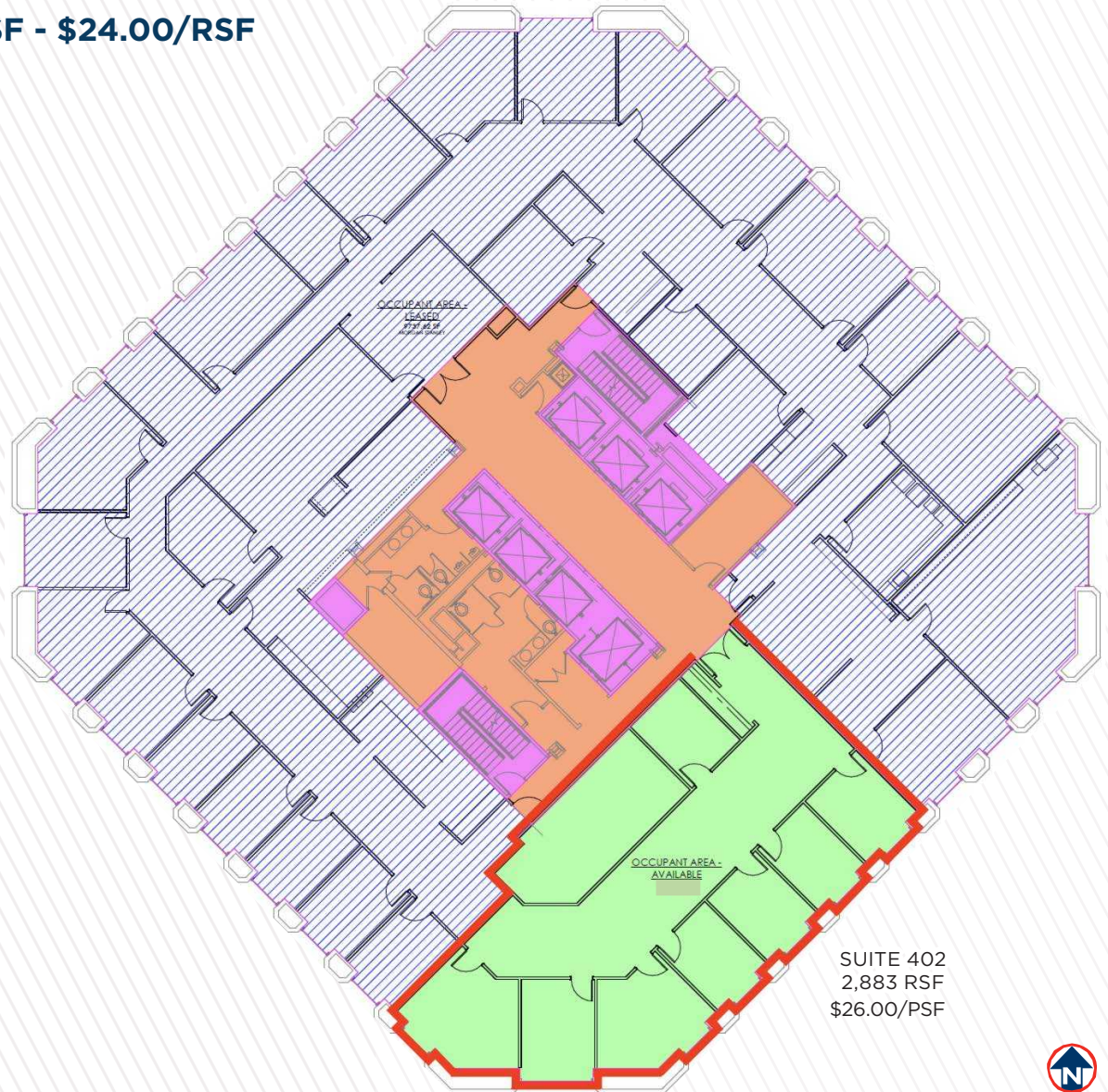
101 South Capitol Boulevard, Boise, Idaho 83702

746 - 14,635 RSF - \$24.00 - \$28.00/RSF



FOR LEASE

FOURTH FLOOR AVAILABILITY - 2,883 RSF - \$24.00/RSF



SUITE 402
2,883 RSF
\$26.00/PSF



CITY CENTER PLAZA

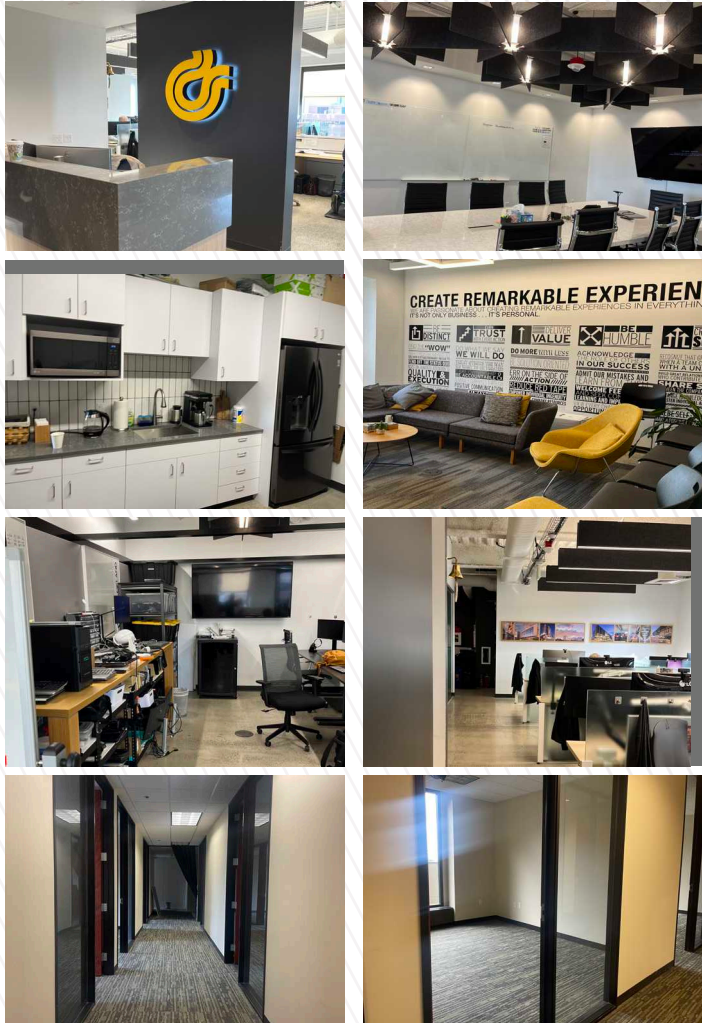
101 South Capitol Boulevard, Boise, Idaho 83702

746 - 14,635 RSF - \$24.00 - \$28.00/RSF



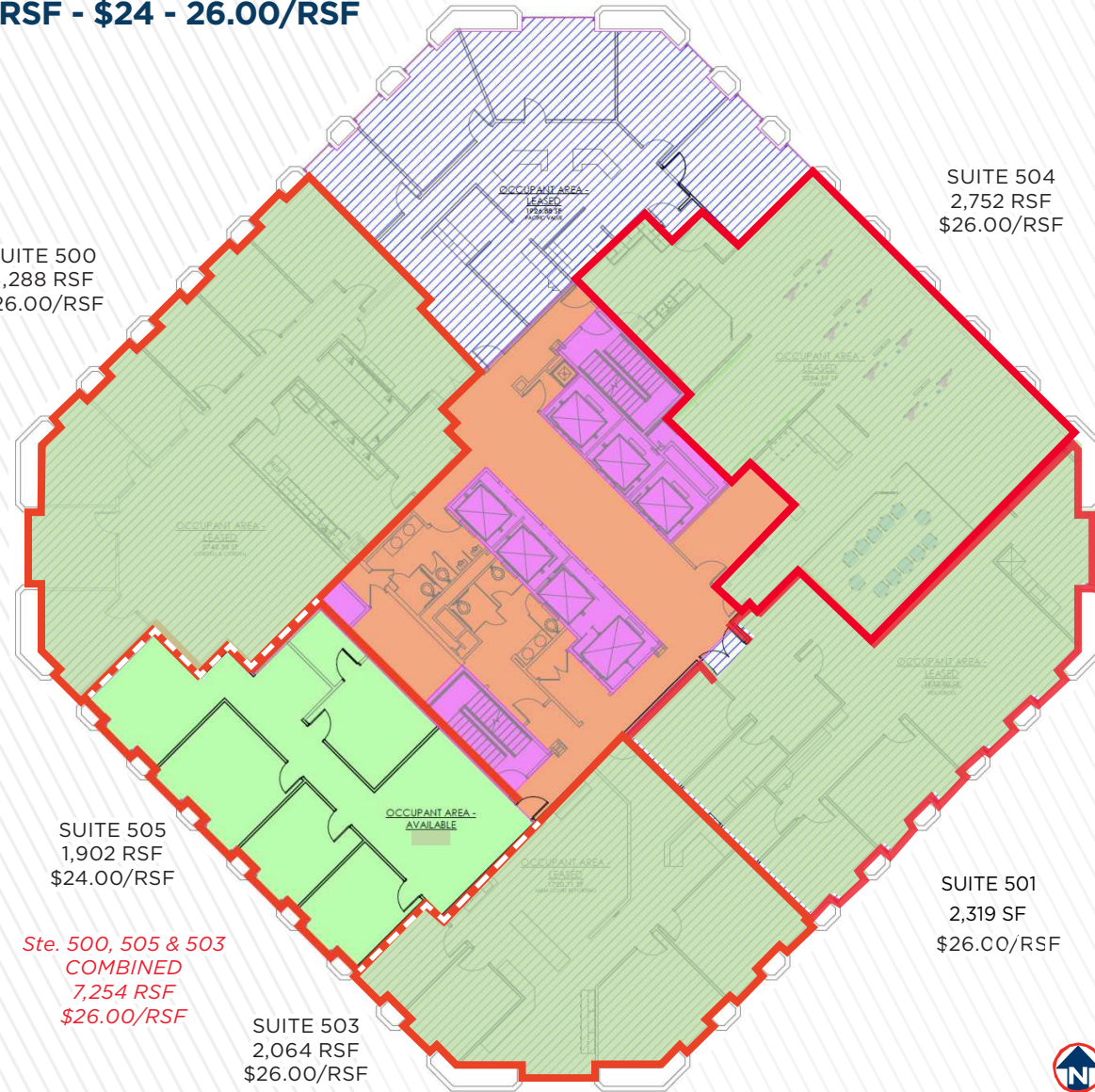
FOR LEASE

FIFTH FLOOR AVAILABILITY - 1,902 - 7,254 RSF - \$24 - 26.00/RSF



SUITE 500
3,288 RSF
\$26.00/RSF

SUITE 504
2,752 RSF
\$26.00/RSF



SUITE 505
1,902 RSF
\$24.00/RSF

SUITE 501
2,319 SF
\$26.00/RSF

*Ste. 500, 505 & 503
COMBINED
7,254 RSF
\$26.00/RSF*

SUITE 503
2,064 RSF
\$26.00/RSF



CITY CENTER PLAZA

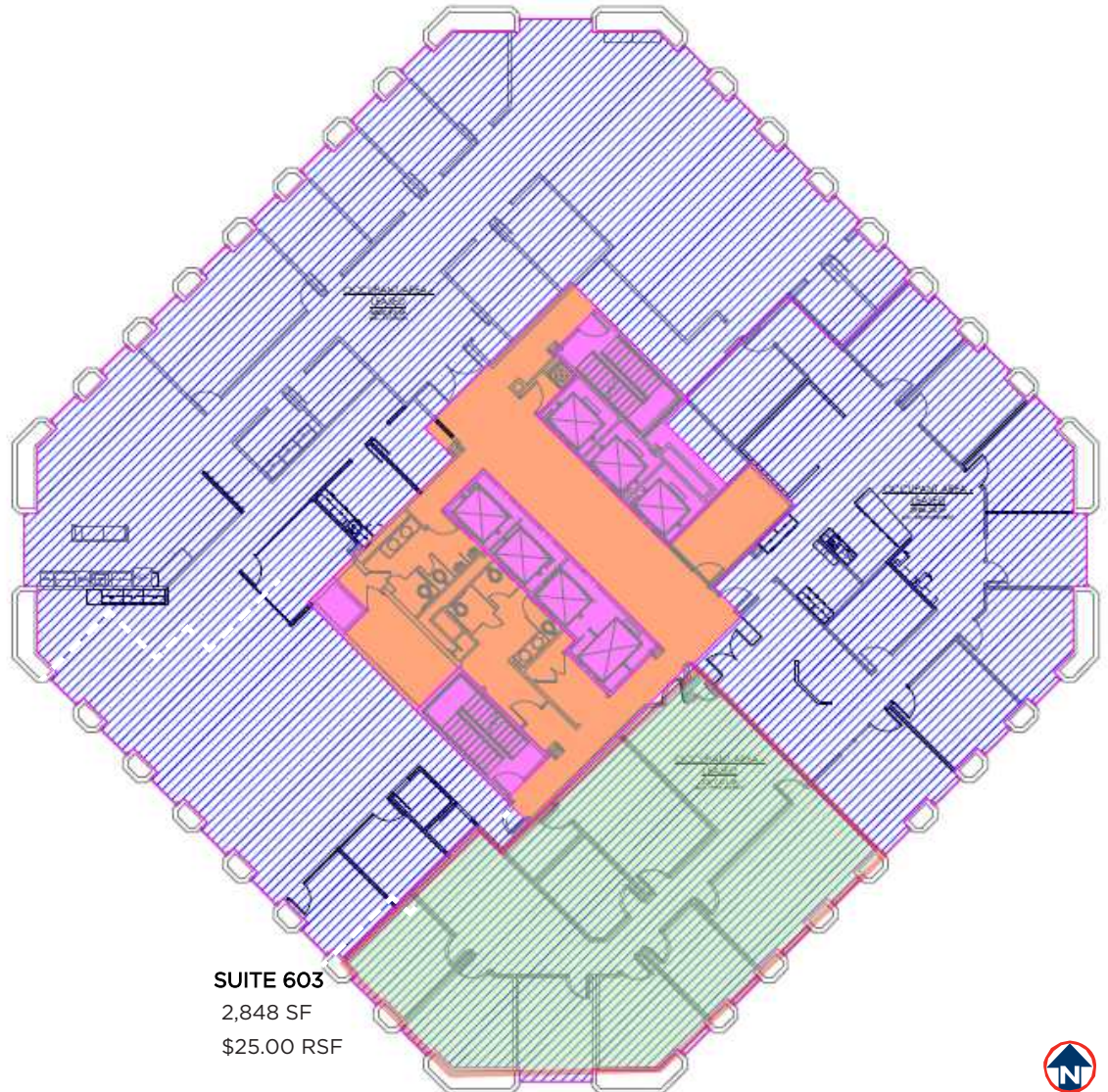
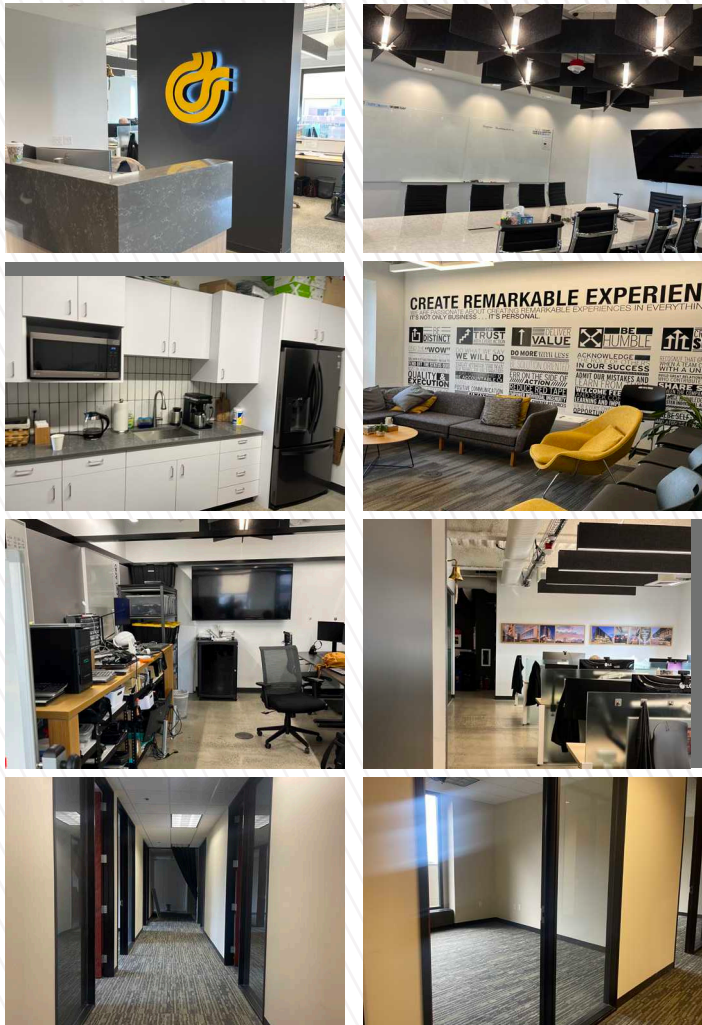
101 South Capitol Boulevard, Boise, Idaho 83702

746 - 14,635 RSF - \$24.00 - \$28.00/RSF



FOR LEASE

SIXTH FLOOR AVAILABILITY - 5,105 RSF - \$25.00/RSF NNN



SUITE 603
2,848 SF
\$25.00 RSF



CITY CENTER PLAZA

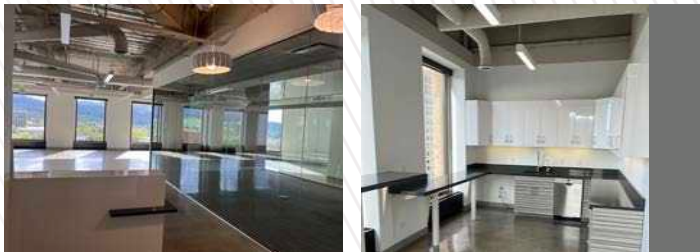
101 South Capitol Boulevard, Boise, Idaho 83702

746 - 14,635 RSF - \$24.00 - \$28.00/RSF

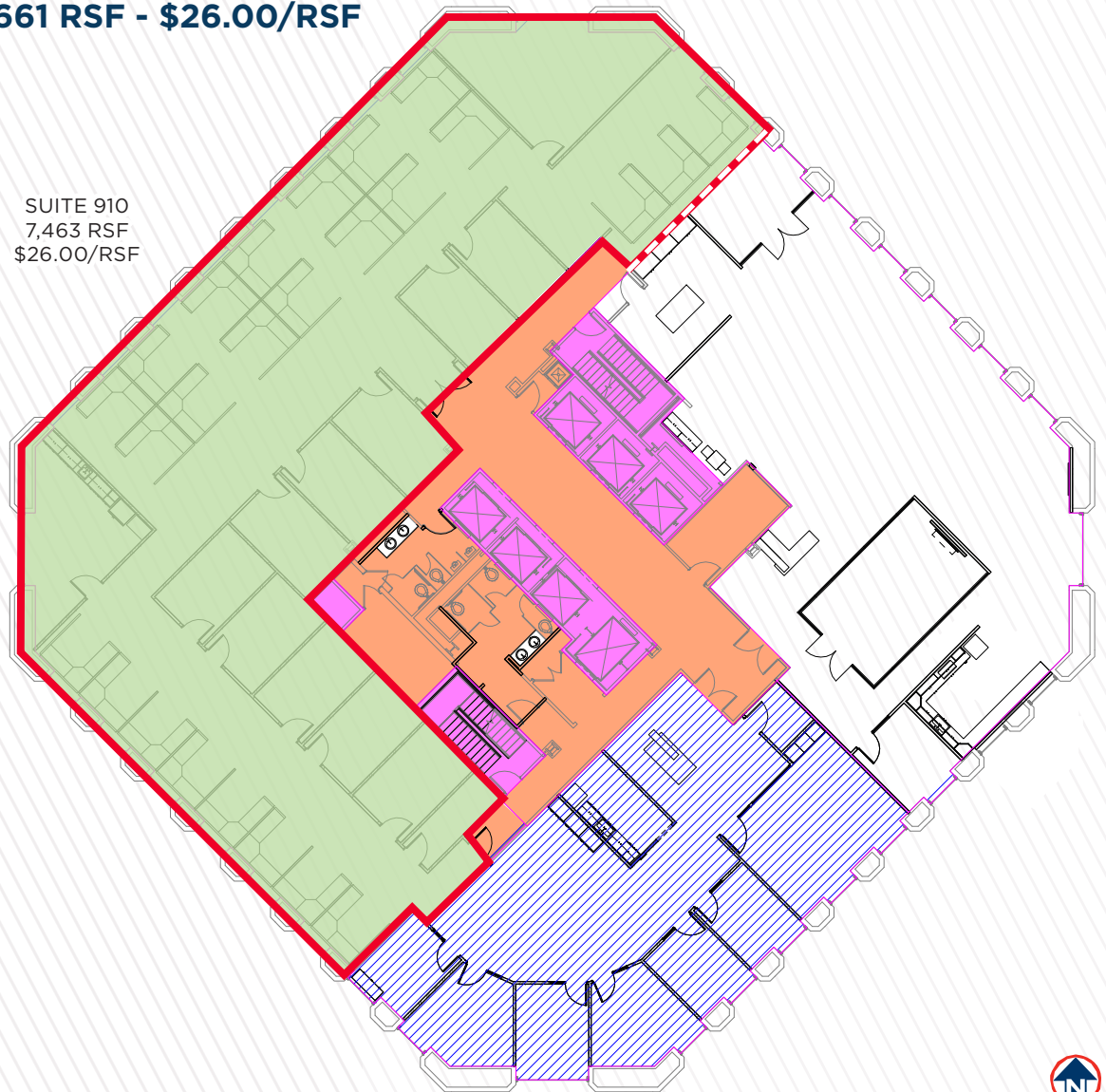
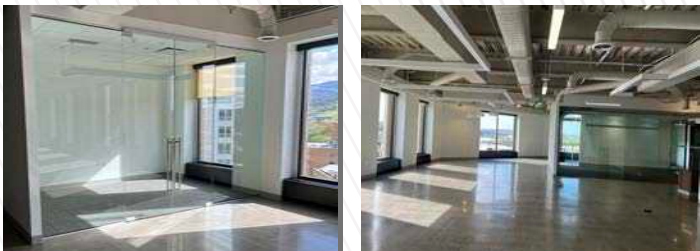
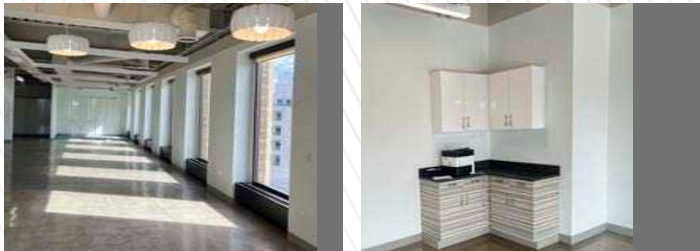


FOR LEASE

NINTH FLOOR AVAILABILITY - 4,198 TO 11,661 RSF - \$26.00/RSF



SUITE 910
7,463 RSF
\$26.00/RSF



CITY CENTER PLAZA

101 South Capitol Boulevard, Boise, Idaho 83702

746 - 14,635 RSF - \$24.00 - \$28.00/RSF



FOR LEASE

TWELFTH FLOOR - 4,318 RSF - \$28.00/RSF



CITY CENTER PLAZA

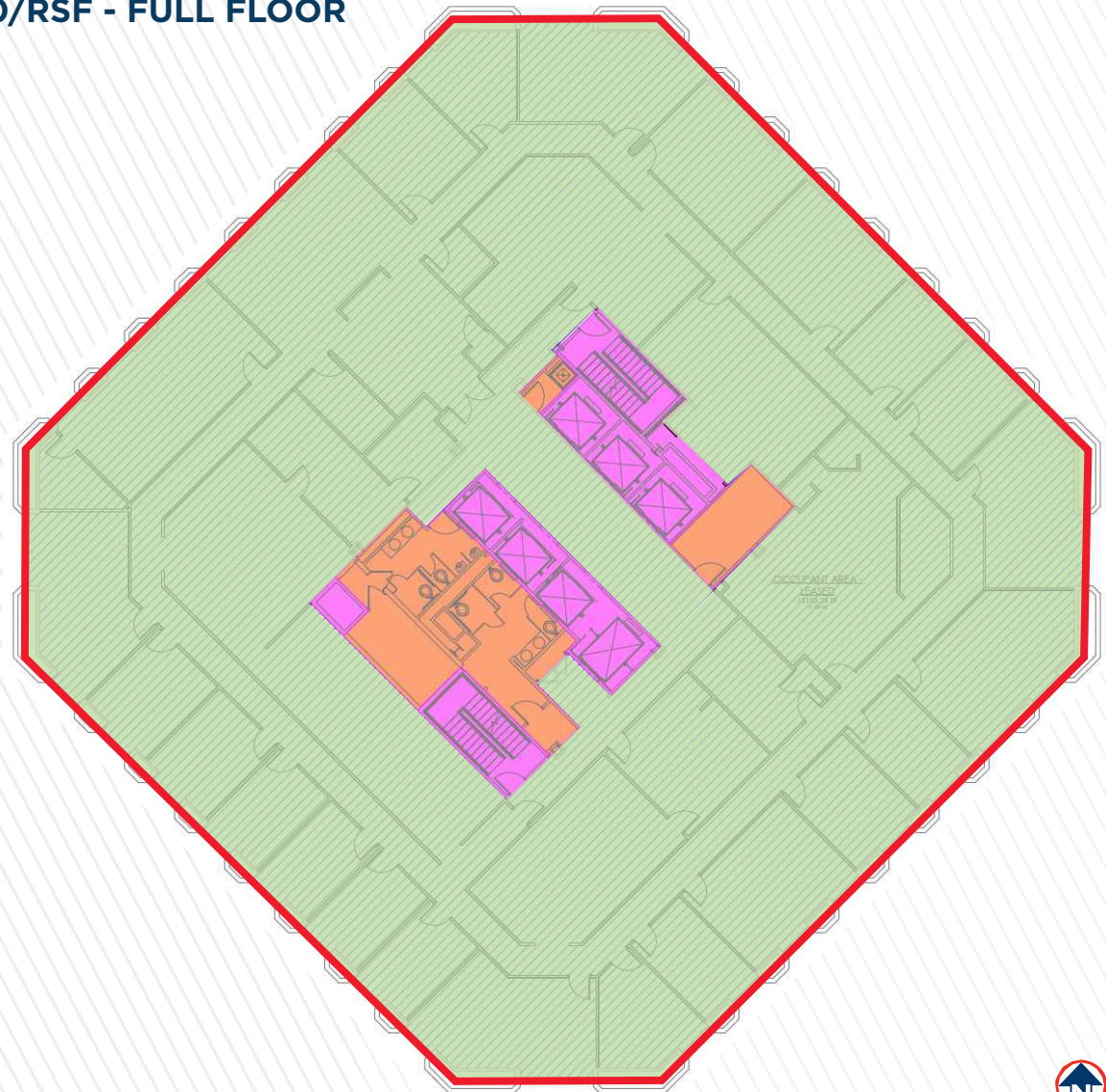
101 South Capitol Boulevard, Boise, Idaho 83702

746 - 14,635 RSF - \$24.00 - \$28.00/RSF



FOR LEASE

FOURTEENTH FLOOR - 14,635 RSF - \$28.00/RSF - FULL FLOOR



CITY CENTER PLAZA

101 South Capitol Boulevard, Boise, Idaho 83702

746 - 14,635 RSF - \$24.00 - \$28.00/RSF

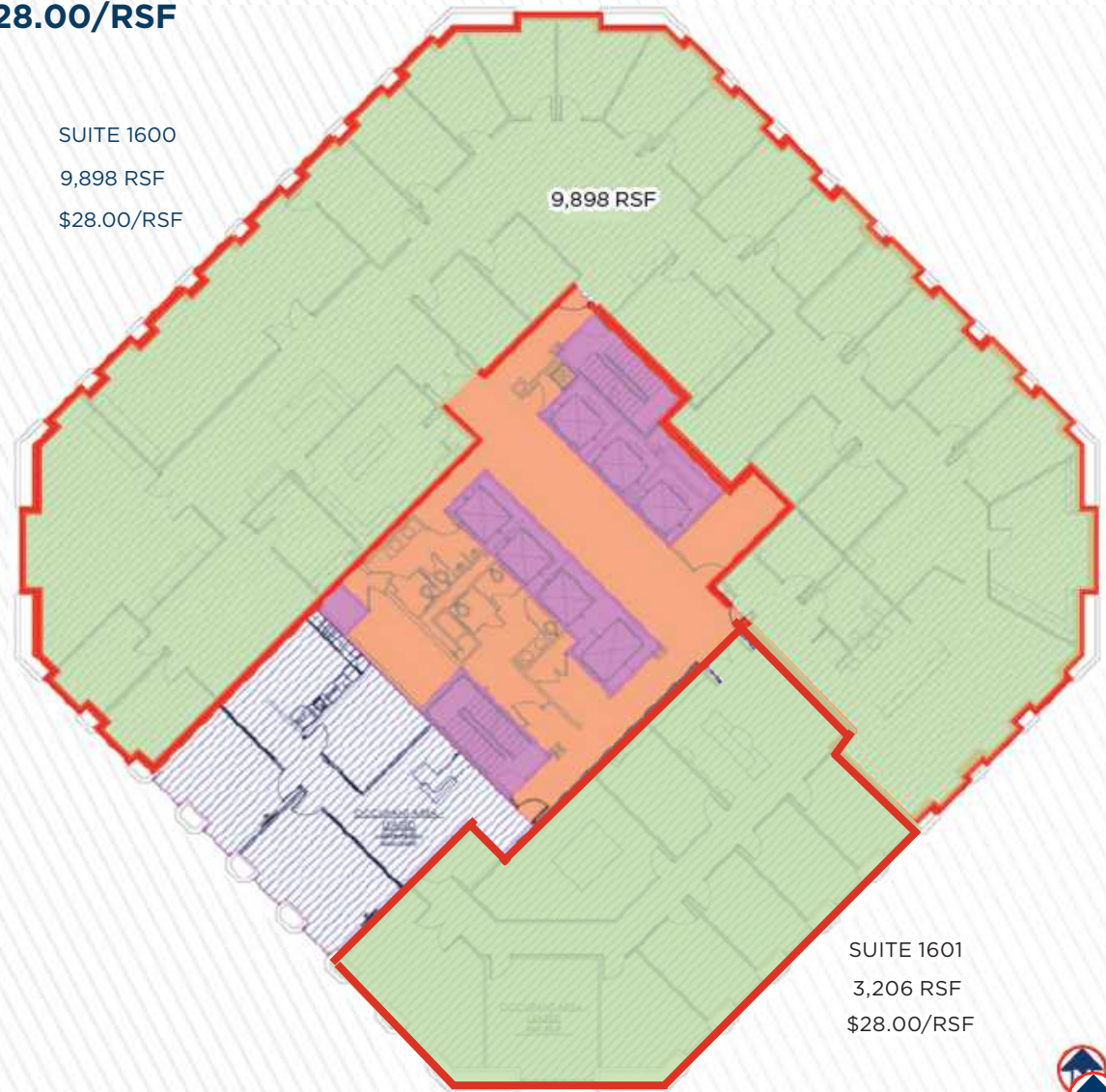


FOR LEASE

SIXTEENTH FLOOR - 3,206 - 9,898 RSF - \$28.00/RSF



SUITE 1600
9,898 RSF
\$28.00/RSF



SUITE 1601
3,206 RSF
\$28.00/RSF



CITY CENTER PLAZA

101 South Capitol Boulevard, Boise, Idaho 83702

746 - 14,635 RSF - \$24.00 - \$28.00/RSF



FOR LEASE

LOCATED IN THE CENTER OF IT ALL - DOWNTOWN BOISE - [CLICK HERE FOR GOOGLE 360 VIEW](#)

DEMOGRAPHICS	1 MILE	2 MILE	3 MILE
POPULATION			
2020 Estimated Population	13,432	46,470	93,209
2025 Projected Population	14,794	50,463	101,089
HOUSEHOLDS			
2020 Estimated Households	7,009	22,897	43,894
2025 Projected Households	7,871	25,083	47,902
2020 Est. Average HH Income	\$62,450	\$76,438	\$78,264
2025 Est. Average HH Income	\$68,809	\$82,654	\$84,194
BUSINESSES / EMPLOYEES			
Total Businesses	2,958	4,465	6,674
Daytime Population/Employees	52,230	67,917	97,797

SOURCE: U.S. BUREAU OF THE CENSUS, 2010 CENSUS OF POPULATION AND HOUSING. ESRI FORECASTS FOR 2020 AND 2025. ESRI CONVERTED CENSUS 2000 DATA INTO 2010 GEOGRAPHY.



THE WAREHOUSE - RESTAURANT ROW

Rush Bowls, Bao Boi, Anzalone Pizza
 Caffe D'Arte, Last Call, Paddles Up Poke
 The Loading Dock, Piedaho, Wok n' Roll
 Totally Toasted, Last Call, Camp Cocktail Bar,
 Waffle Love Gaston's Bakery, Neighbor Tim's BBQ