



BAKER CITY RETAIL

9 2 0 C A M P B E L L S T R E E T | B A K E R C I T Y , O R 9 7 8 1 4

920 CAMPBELL STREET BAKER CITY, OR 97814



1,500-5,000 SF

RETAIL

CALL

FOR RATES



10.1k
TOTAL
POPULATION

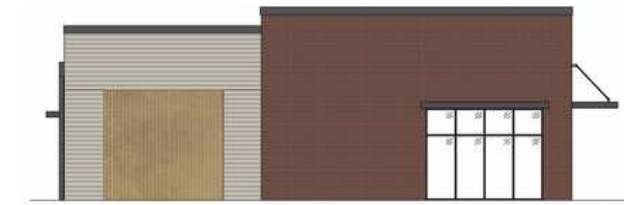
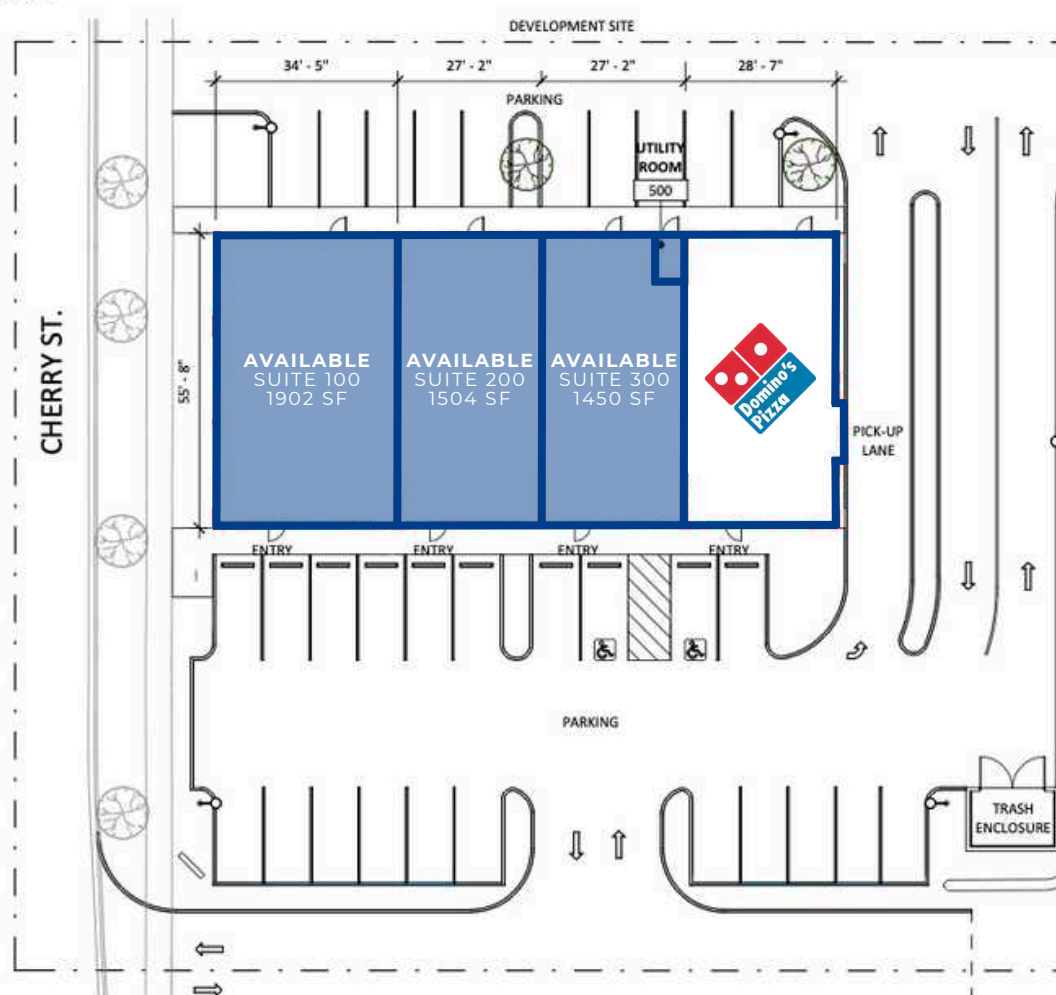
9.7k
DAYTIME
POPULATION

\$88.3k
AVG. HOUSEHOLD
INCOME

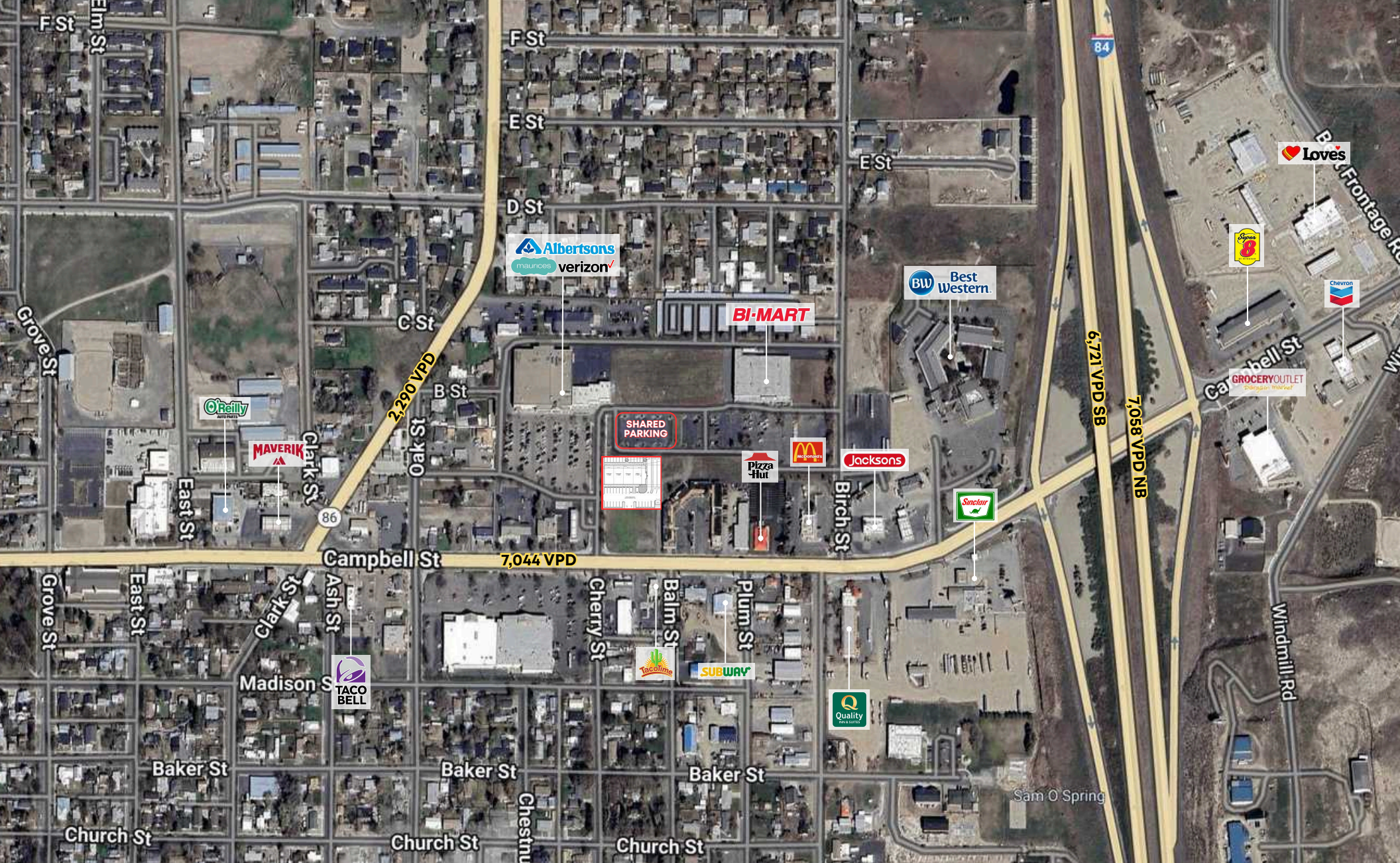
5k
BUSINESSES

4.4k
HOUSEHOLDS

5k
EMPLOYEES



- ▶ 1,500 - 5,000 SF of New Development Available with Late 2026 Delivery
- ▶ New construction building located in the heart of Baker City. Join Domino's in the market's premier retail center located just off Hwy 84. Abundant parking on site (5:1,000) with excellent visibility from Campbell Street. Adjacent to Bi Mart & Albertsons!



Baker City

OREGON

Baker City, Oregon is a historic town located in eastern Oregon, nestled in a picturesque valley between the Blue Mountains and the Wallawas. Known for its well-preserved architecture and Old West charm, it was once a booming gold rush town. Today, Baker City offers a blend of outdoor adventure, rich history, and small-town charm, with attractions like the Oregon Trail Interpretive Center, vibrant art scene, and easy access to hiking, skiing, and scenic byways.



**Intermountain
Realty, Inc.**

GREG SACKOS

PRINCIPAL BROKER
GSACKOS@YAHOO.COM

LICENSE # OR 780300154



TYSON CLARKE

SENIOR VICE PRESIDENT | PARTNER
TYSON@PAADVISORS.COM

360.319.4855