

LEASE

JE INDUSTRIAL BUILDING

1724 Garrett St Enumclaw, WA 98022



OFFERING SUMMARY

Lease Rate:	\$1.10 SF/month (NNN)
Available SF:	9,956 - 20,560 SF
Lot Size:	1.42 Acres
Year Built:	1966
Zoning:	LI - Light Industrial

PROPERTY OVERVIEW

Industrial space with paved and secured yard storage in rear. Light Industrial Zoning. 4 GL doors. Entire building is available, or can be divided into 2 separate spaces.

PROPERTY HIGHLIGHTS

- Approximately 20,000 SF of secured yard space
- 14ft overhead doors
- 3,014 SF of combined office space

Brandon Thomas
(206) 303-9595
bthomas@cbcworldwide.com

Danette Selk
(253) 222-1282
danette@cbcworldwide.com

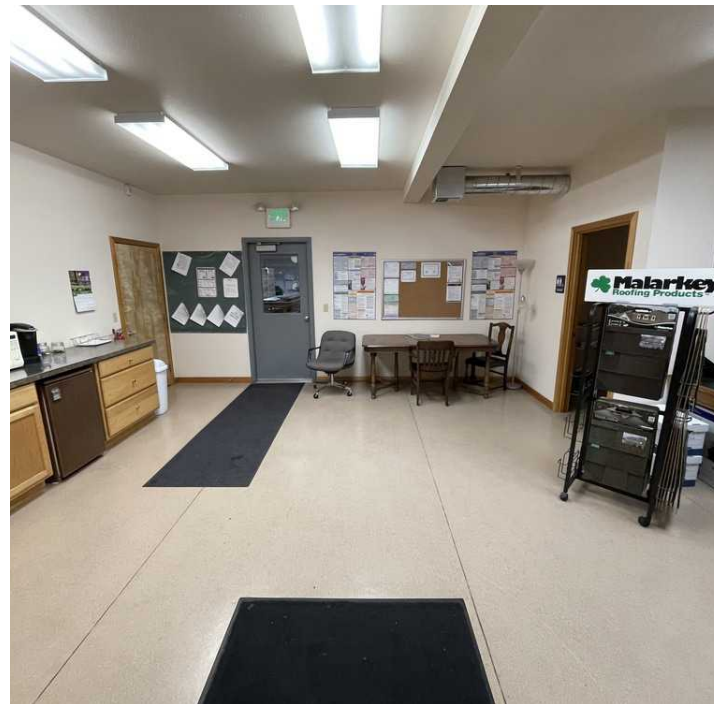
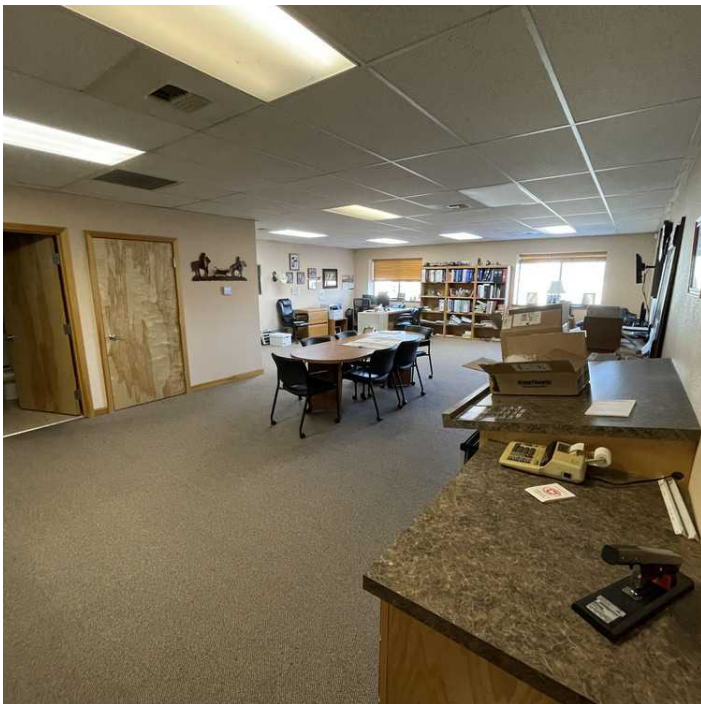


**COLDWELL BANKER
COMMERCIAL**
DANFORTH

LEASE

JE INDUSTRIAL BUILDING

1724 Garrett St Enumclaw, WA 98022



Brandon Thomas
(206) 303-9595
bthomas@cbcworldwide.com

Danette Selk
(253) 222-1282
danette@cbcworldwide.com

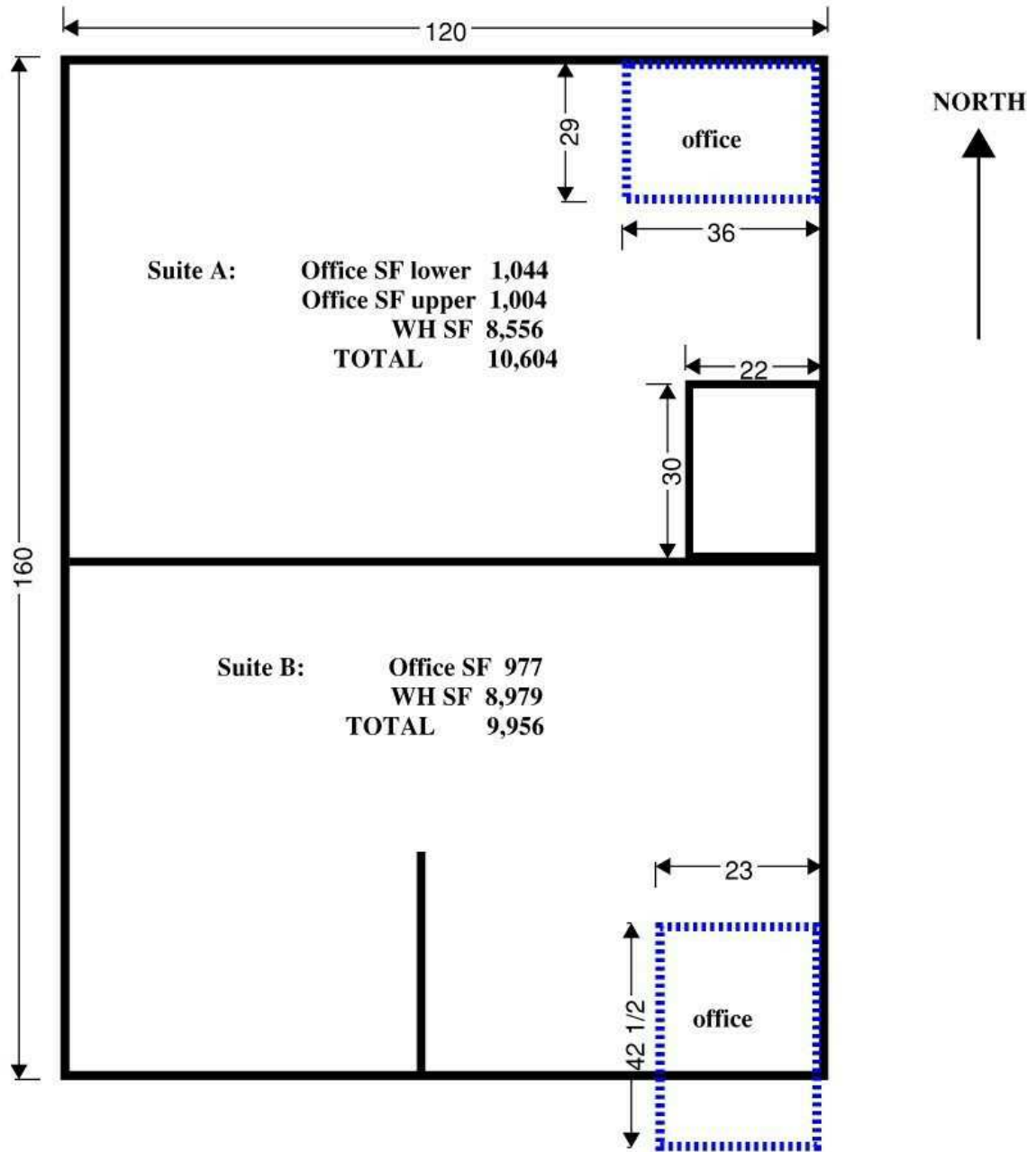


**COLDWELL BANKER
COMMERCIAL**
DANFORTH

LEASE

JE INDUSTRIAL BUILDING

1724 Garrett St Enumclaw, WA 98022



Brandon Thomas
(206) 303-9595
bthomas@cbcworldwide.com

Danette Selk
(253) 222-1282
danette@cbcworldwide.com

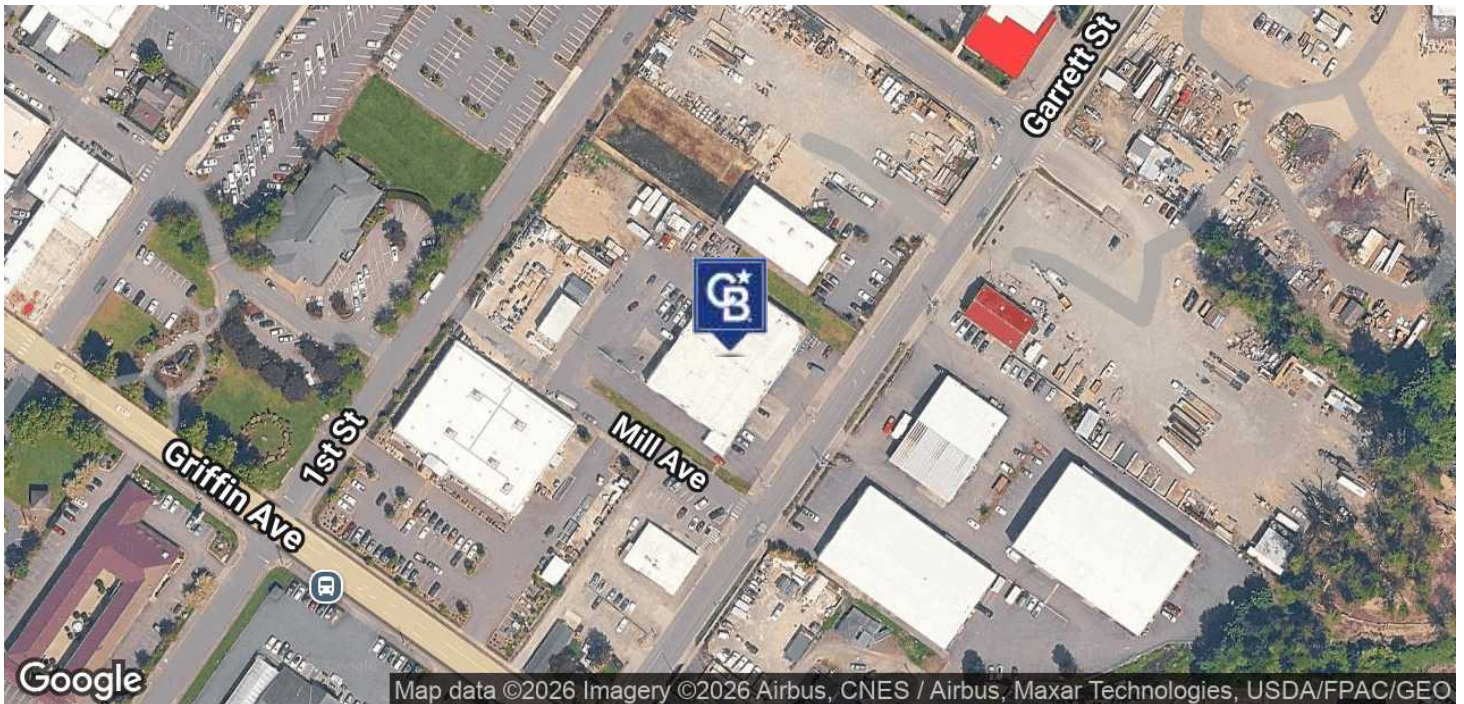
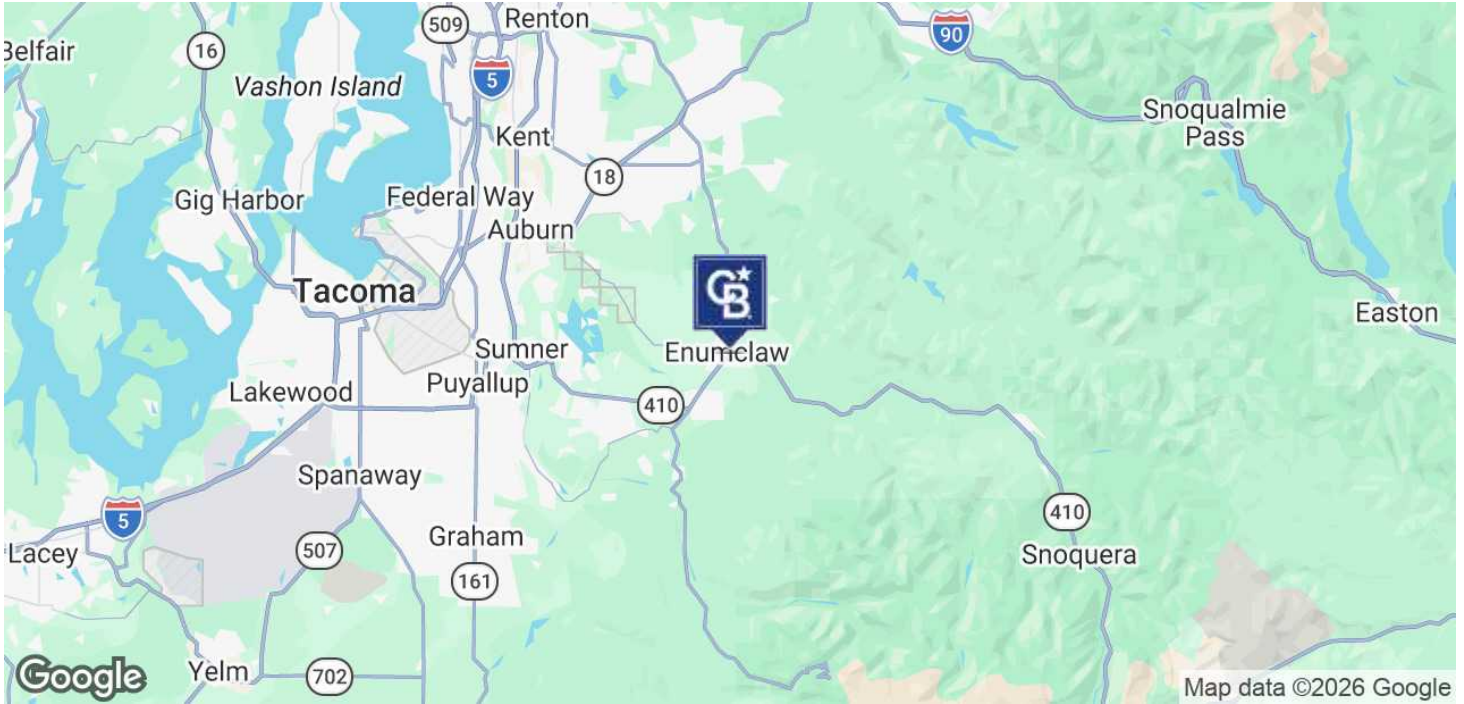


**COLDWELL BANKER
COMMERCIAL**
DANFORTH

LEASE

JE INDUSTRIAL BUILDING

1724 Garrett St Enumclaw, WA 98022



Brandon Thomas
(206) 303-9595
bthomas@cbcworldwide.com

Danette Selk
(253) 222-1282
danette@cbcworldwide.com



**COLDWELL BANKER
COMMERCIAL**
DANFORTH