

# NW MALL BUILDING



FOR LEASE

*Prime Issaquah location with easy access to I-90*

1320 NW MALL ST, ISSAQUAH, WA

*URBAN CORE*

ZONING

*3,412 SF*

SUITE E AVAILABLE

## NW MALL BUILDING



### PROPERTY HIGHLIGHTS

Zoned Urban Core, allowing for a wide array of uses, including retail, light manufacturing, office, medical assisted living, professional and medical services, education, government, recreational, and religious uses

Prime Issaquah location with easy access to I-90 (2 min.)

Locally owned with professional management in place

Building signage available

Walking distance to shopping centers, restaurants and cafés

Parking ratio of 2.50/1,000 SF

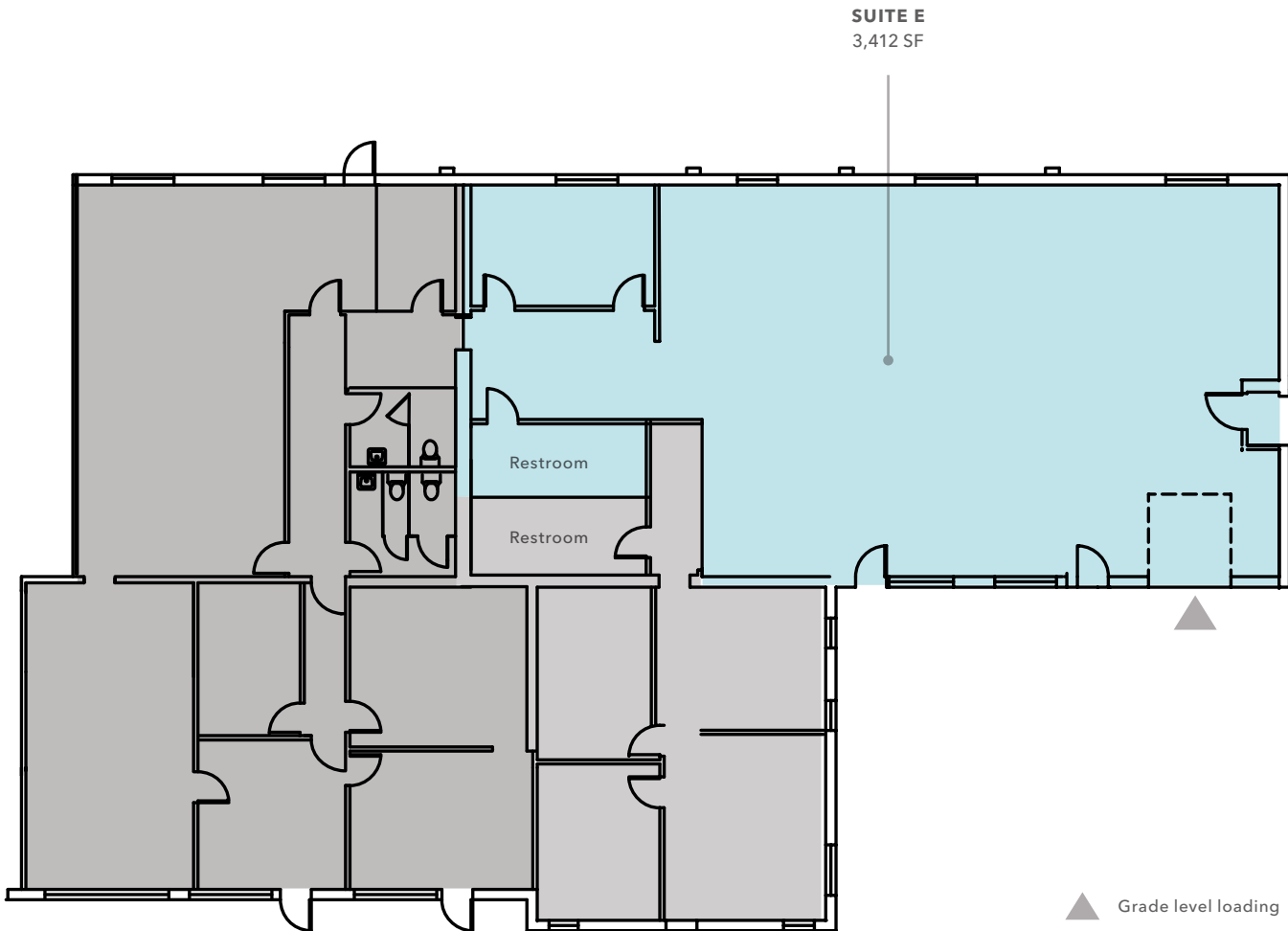
**JAMES LEPTICH**  
425.450.1159  
james.leptich@kidder.com

### KIDDER.COM

This information supplied herein is from sources we deem reliable. It is provided without any representation, warranty, or guarantee, expressed or implied as to its accuracy. Prospective Buyer or Tenant should conduct an independent investigation and verification of all matters deemed to be material, including, but not limited to, statements of income and expenses. Consult your attorney, accountant, or other professional advisor. All Kidder Mathews designs are the sole property of Kidder Mathews. Branded materials and layouts are not authorized for use by any other firm or person.



# FLOOR PLAN



*Suites available separately or can be combined*

**AVAILABILITIES**

SUITE E (FLEX)	3,412 SF (\$18.00 PSF, NNN)
EST. NNN'S	\$2,934.75 (2025 - includes utilities)
PARKING RATIO	2.50/1,000 SF

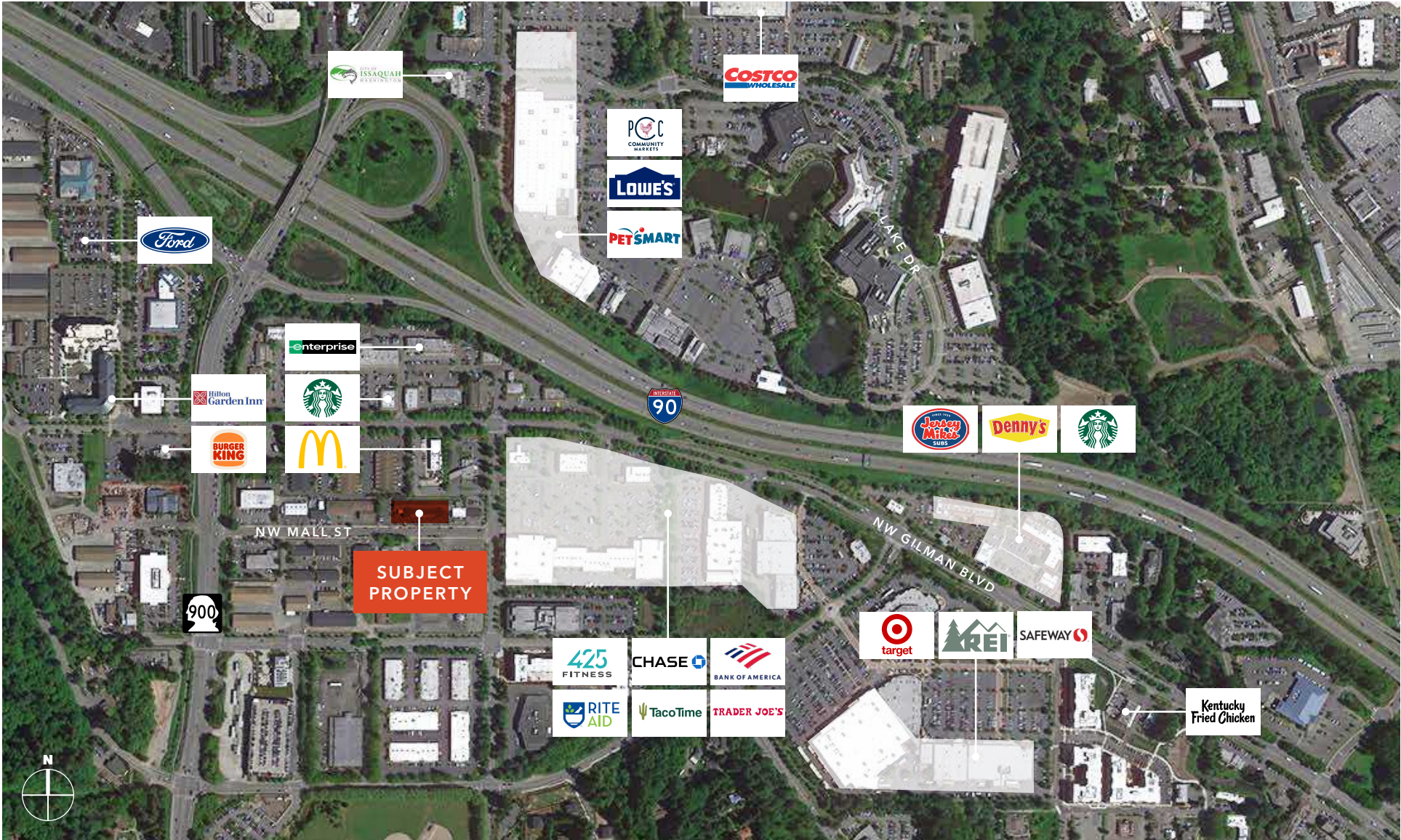
**JAMES LEPTICH**  
425.450.1159  
james.leptich@kidder.com

**KIDDER.COM**

This information supplied herein is from sources we deem reliable. It is provided without any representation, warranty, or guarantee, expressed or implied as to its accuracy. Prospective Buyer or Tenant should conduct an independent investigation and verification of all matters deemed to be material, including, but not limited to, statements of income and expenses. Consult your attorney, accountant, or other professional advisor. All Kidder Mathews designs are the sole property of Kidder Mathews. Branded materials and layouts are not authorized for use by any other firm or person.



# NW MALL BUILDING



[KIDDER.COM](http://KIDDER.COM)

This information supplied herein is from sources we deem reliable. It is provided without any representation, warranty, or guarantee, expressed or implied as to its accuracy. Prospective Buyer or Tenant should conduct an independent investigation and verification of all matters deemed to be material, including, but not limited to, statements of income and expenses. Consult your attorney, accountant, or other professional advisor. All Kidder Mathews designs are the sole property of Kidder Mathews. Branded materials and layouts are not authorized for use by any other firm or person.



# BUILDING PLAN



[KIDDER.COM](http://KIDDER.COM)

This information supplied herein is from sources we deem reliable. It is provided without any representation, warranty, or guarantee, expressed or implied as to its accuracy. Prospective Buyer or Tenant should conduct an independent investigation and verification of all matters deemed to be material, including, but not limited to, statements of income and expenses. Consult your attorney, accountant, or other professional advisor. All Kidder Mathews designs are the sole property of Kidder Mathews. Branded materials and layouts are not authorized for use by any other firm or person.