

OFFICE SPACE  
FOR LEASE



602 N 5TH STREET  
BOISE, ID 83702

CENTRAL  
WASHINGTON PLACE

CBRE

# PROPERTY OVERVIEW

## Highlights

- ±3,315 SF available in Suite 1002
- Prime downtown Boise location near the Capitol
- Park-like exterior with mature landscaping
- Professionally managed, well-maintained property
- Secure covered parking options available
- Fiber internet available

## Specs

<b>Building Type</b>	Office
<b>Available SF</b>	±3,315 SF
<b>Building SF</b>	±28,234 SF
<b>Lease Rate</b>	\$24.00 PSF
<b>Lease Type</b>	FSEJ
<b>Parking Ratio</b>	2.9:1,000



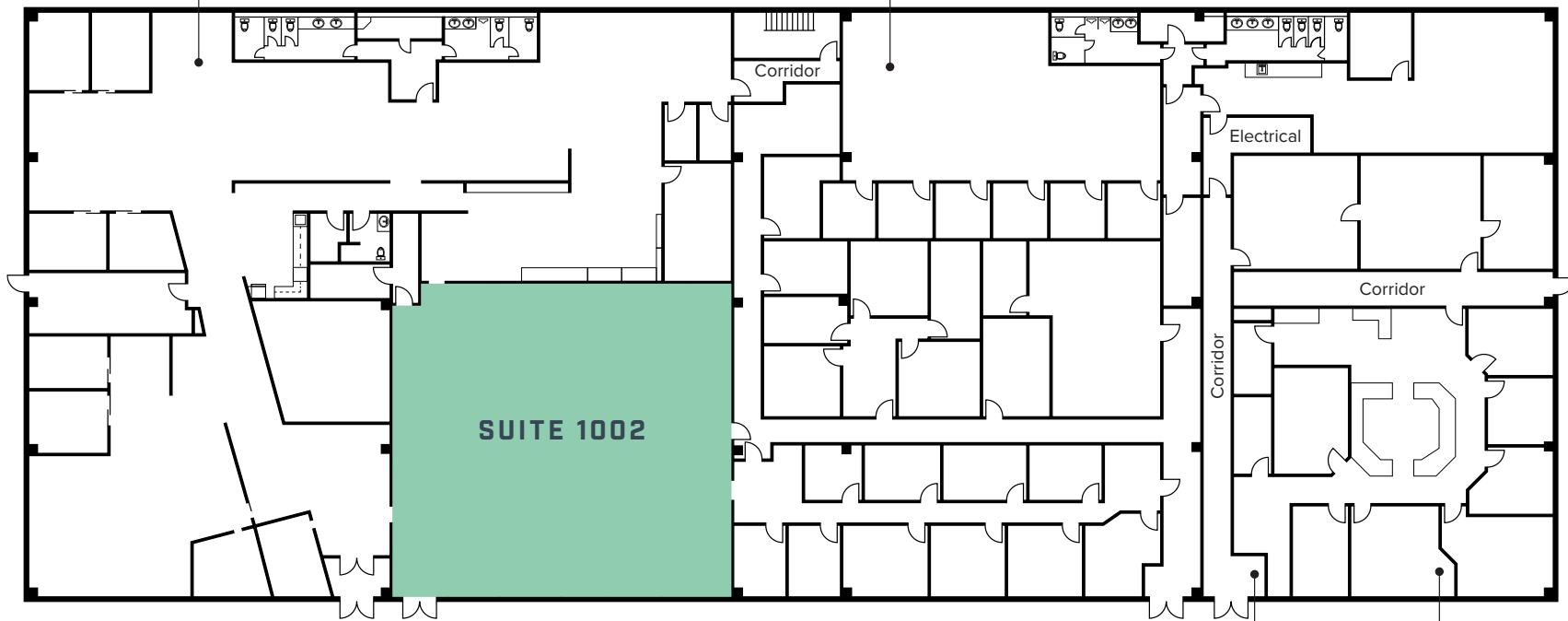
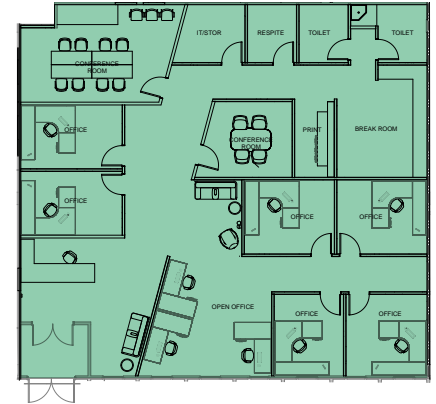
# FLOOR PLAN

±3,315 SF available - Suite 1002

LOMBARD  
CONRAD  
ARCHITECTS

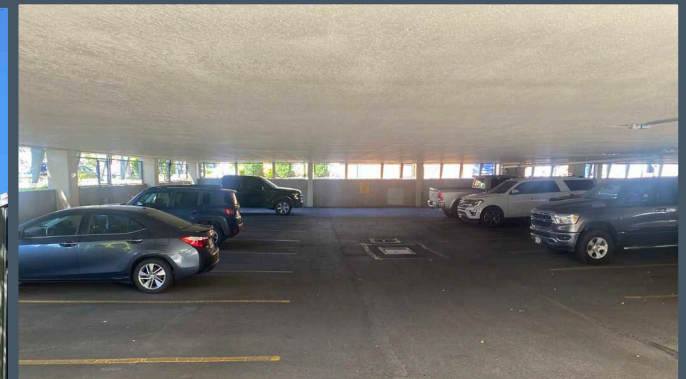
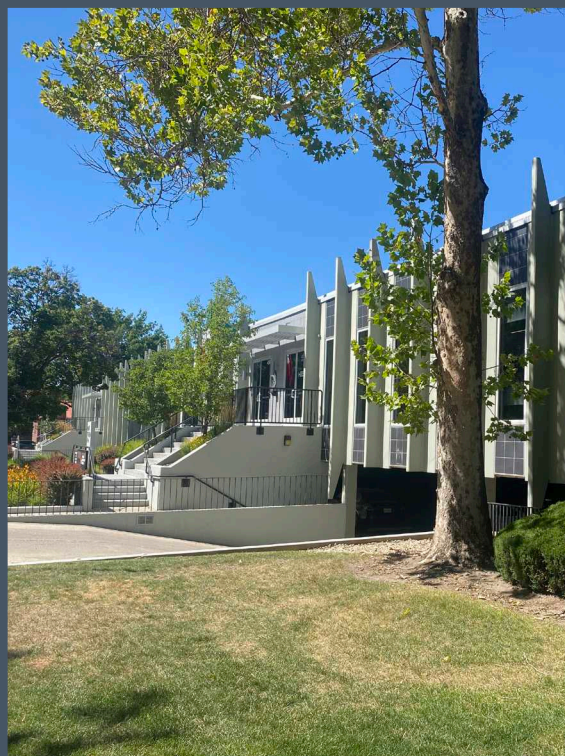
MÉXICO

SUITE 1002  
CONCEPTUAL  
PLAN



Vestibule





# AERIAL MAP



## KARENA GILBERT, SIOR

Vice President  
+1 208 488 3164  
karena.gilbert@cbre.com

## KYLE UHLENKOTT

Senior Associate  
+1 208 488 3161  
kyle.uhlenkott@cbre.com

## SAMUEL LUNDY

Associate  
+1 208 600 2684  
samuel.lundy@cbre.com

**CBRE**

© 2026 CBRE, Inc. All rights reserved. This information has been obtained from sources believed reliable but has not been verified for accuracy or completeness. CBRE, Inc. makes no guarantee, representation or warranty and accepts no responsibility or liability as to the accuracy, completeness, or reliability of the information contained herein. You should conduct a careful, independent investigation of the property and verify all information. Any reliance on this information is solely at your own risk. Photos herein are the property of their respective owners. Use of these images without the express written consent of the owner is prohibited. Text/Images contained in this publication have been generated in whole or in part by or with the assistance of generative artificial intelligence. CBRE and the CBRE logo are service marks of CBRE, Inc. All other marks displayed on this document are the property of their respective owners, and the use of such marks does not imply any affiliation with or endorsement of CBRE.