



Lakewood Natural Medicine

8909-B Gravelly Lake Dr SW, Lakewood, WA 98499

For lease is 2,930sf of nice medical office space on Gravelly Lake Dr. near the Steilacoom Blvd intersection in Lakewood. The office is furnished with equipment including treatment tables, existing computers, billing software, and more, which can be removed or its use can be negotiated with the lease. The floor plan features a spacious and well-lit waiting room, receptionist's station, approximately eight exam rooms and three private offices, three restrooms, and a large, currently shared therapy room. Parking is ample in the lighted lot. Asking lease rate is \$18-\$20/sf/yr plus NNN.

Property Overview

- 2,930sf medical office, divisibility potential
- 8 exam rooms
- Signage on Gravelly Lake Dr.
- Lease rate: \$18-20/sf/yr NNN
- Ample parking
- Easy access

DISCLAIMER: The above information has been secured from sources believed to be reliable, however, no representations are made to its accuracy. Prospective tenants or buyers should consult their professional advisors and conduct their own independent investigation. Properties are subject to change in price and/or availability without notice.



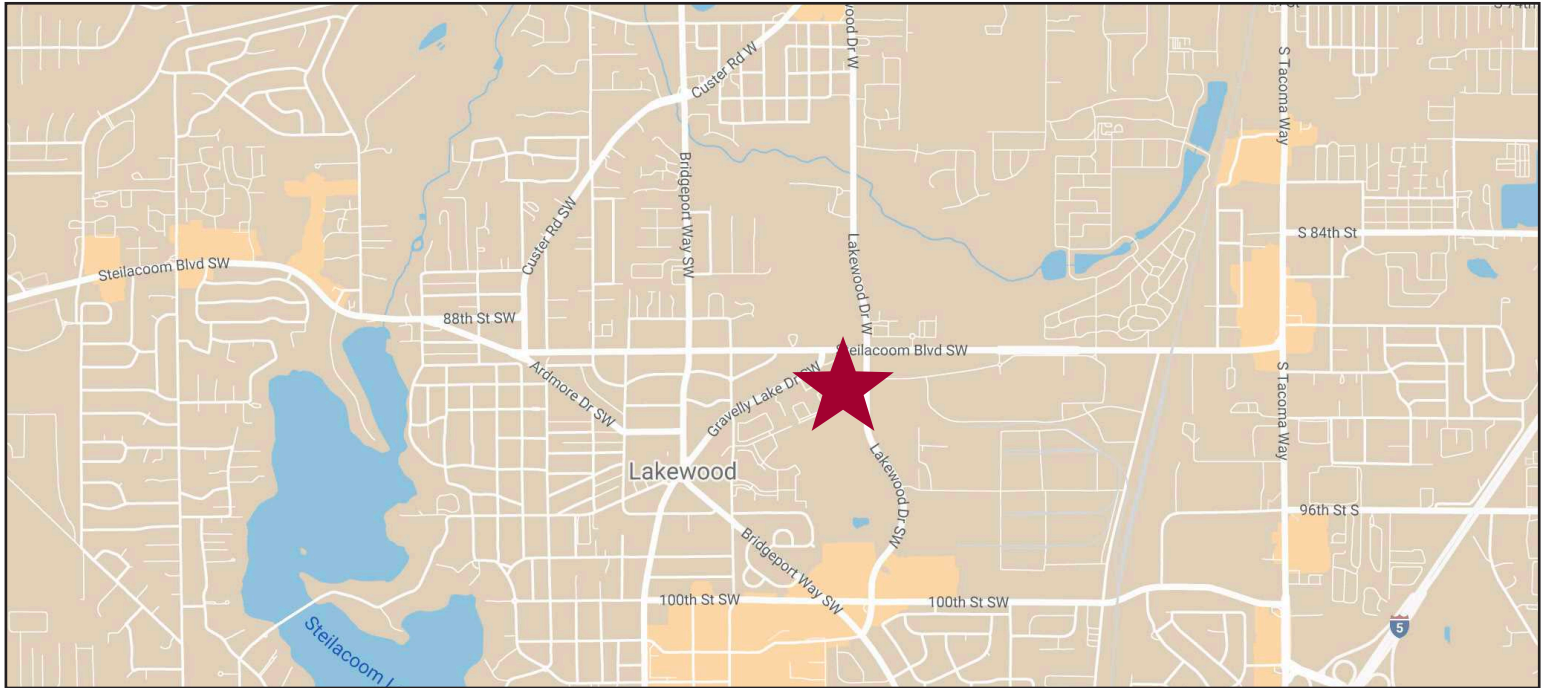
11120 Gravelly Lake Dr SW Ste 2
Lakewood, Washington 98499
johnson-commercial.com

Margot Johnson
margot@johnson-commercial.com
(253) 209-9998

Tim Johnson
timothy@johnson-commercial.com
(253) 209-9999

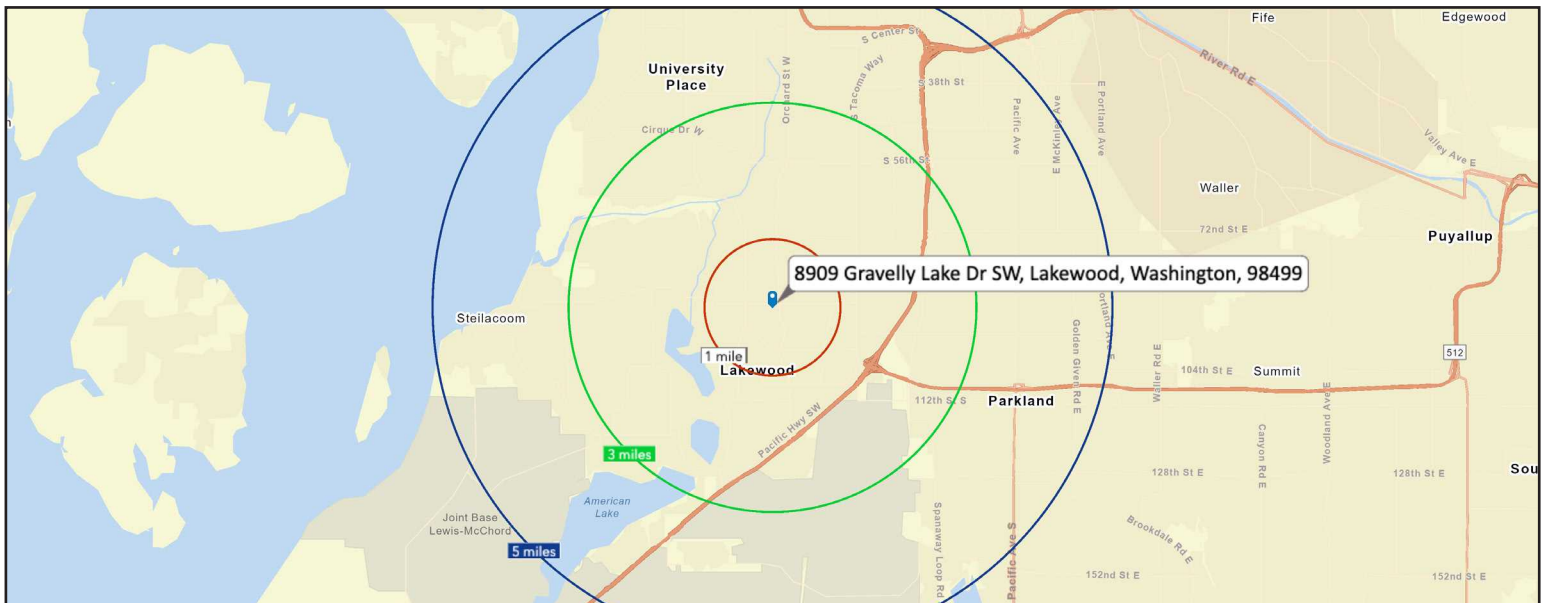



REGIONAL MAP



DEMOGRAPHICS

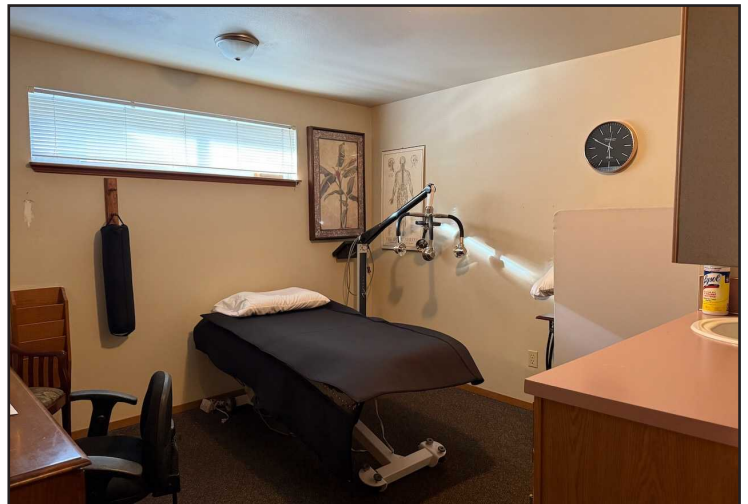
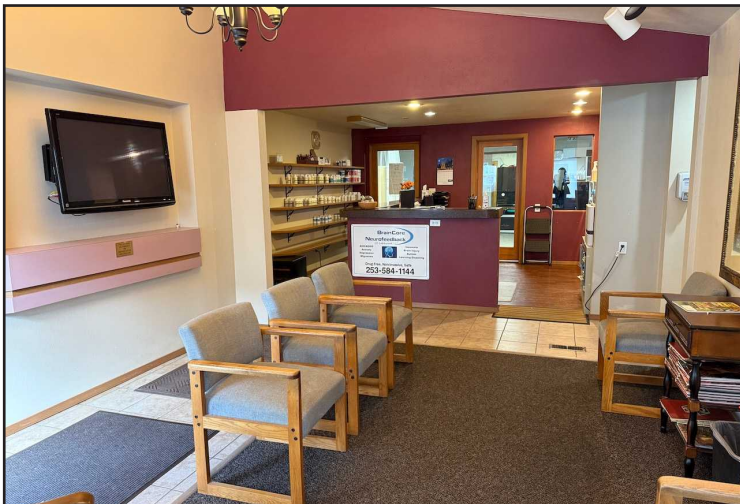
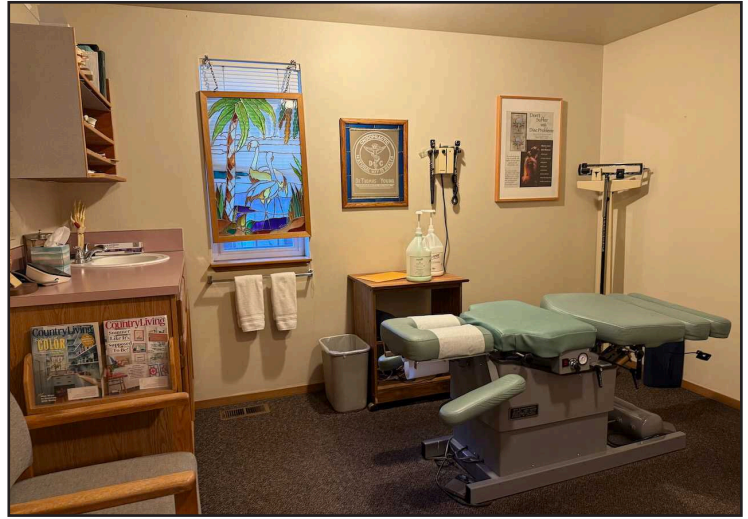
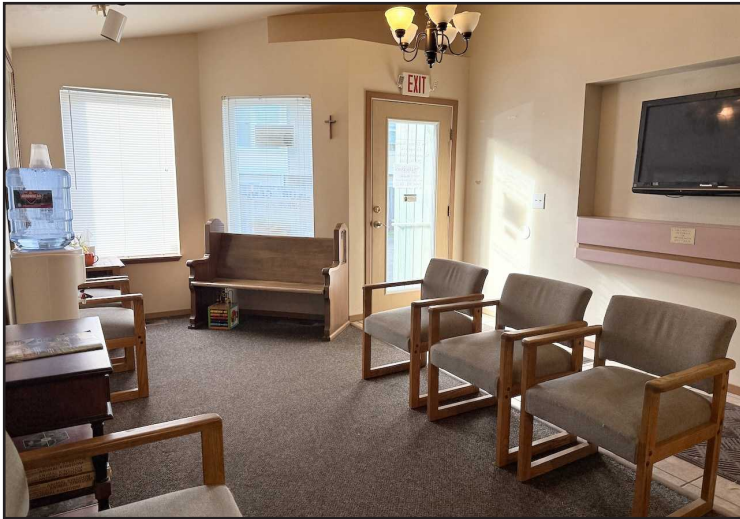
2022 Population	1 Mile	3 Miles	5 Miles
	12,007	104,816	255,757
2022 Household Income	1 Mile	3 Miles	5 Miles
	\$53,402	\$63,545	\$67,195



 <p>11120 Gravelly Lake Dr SW Ste 2 Lakewood, Washington 98499 johnson-commercial.com</p>	<p>Margot Johnson margot@johnson-commercial.com (253) 209-9998</p>	<p>Tim Johnson timothy@johnson-commercial.com (253) 209-9999</p>
---	---	---



INTERIOR PHOTOS



11120 Gravelly Lake Dr SW Ste 2
Lakewood, Washington 98499
johnson-commercial.com

Margot Johnson
margot@johnson-commercial.com
(253) 209-9998

Tim Johnson
timothy@johnson-commercial.com
(253) 209-9998



FLOOR PLAN



FLOOR PLAN CREATED BY CUBICASA APP. MEASUREMENTS DEEMED HIGHLY RELIABLE BUT NOT GUARANTEED.



11120 Gravelly Lake Dr SW Ste 2
Lakewood, Washington 98499
johnson-commercial.com

Margot Johnson
margot@johnson-commercial.com
(253) 209-9998

Tim Johnson
timothy@johnson-commercial.com
(253) 209-9999