

# 1001 PACIFIC BUILDING

1001 PACIFIC AVENUE, TACOMA, WA 98402



**FRESHLY RENOVATED, AND DEMISED MULTI-TENANT OFFICE BUILDING IN THE HEART OF THE TACOMA CBD**

## AVAILABLE FOR LEASE

**CORNER RETAIL**      **\$20 PSF, NNN**

2,426 SF

High Visibility Former Bank Branch

**OFFICE SUITES**      **\$24 PSF, Full Service**

**2nd Floor Office**

Suite 260 - 2,224 RSF



## BUILDING HIGHLIGHTS

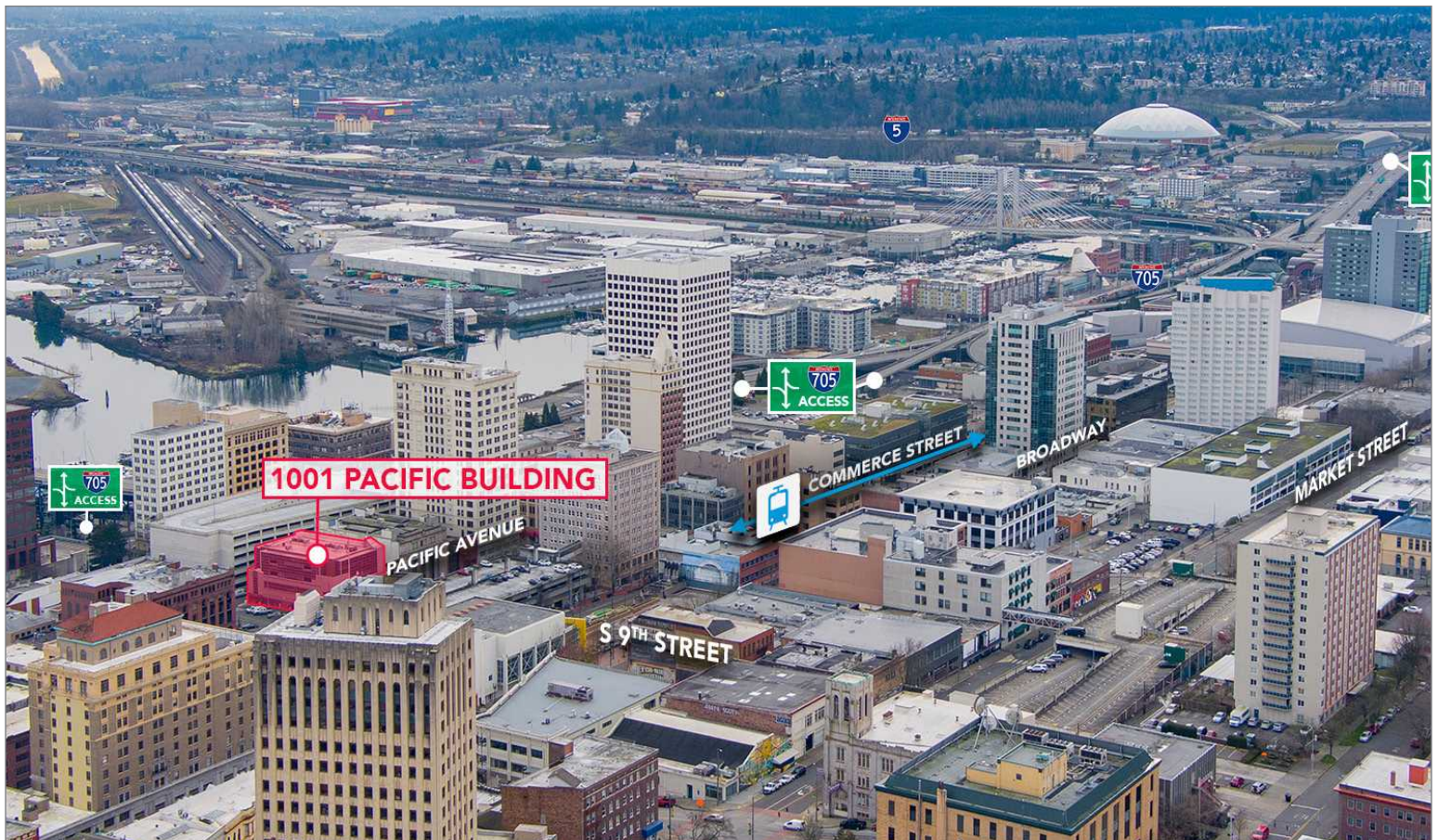
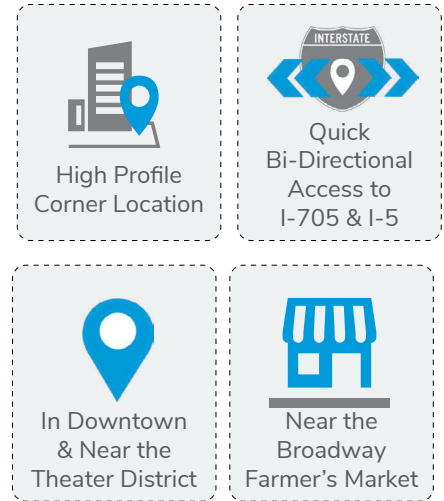
- » Newly Demised Suites
- » Prominent Corner Location
- » Signage Available
- » Data Room with Equipment

# 1001 PACIFIC BUILDING

1001 PACIFIC AVENUE, TACOMA, WA

## LOCATION HIGHLIGHTS

- » **Proximity to I-705:** Just 2 blocks from the I-705 entrance, ensuring convenient access for drivers.
- » **Ample Parking:** Available at nearby garages for ease and convenience.
- » **High Visibility Corner:** Located at a prominent corner with excellent walkability to a variety of restaurants, coffee shops, the Theater District, and downtown attractions.
- » **Transit Access:** Only 3 blocks from the Light Rail Commerce Station, connecting downtown to key destinations such as the University of Washington Tacoma, Tacoma Convention Center, and the Tacoma Dome Station, with ongoing extensions enhancing connectivity.



## CONTACT

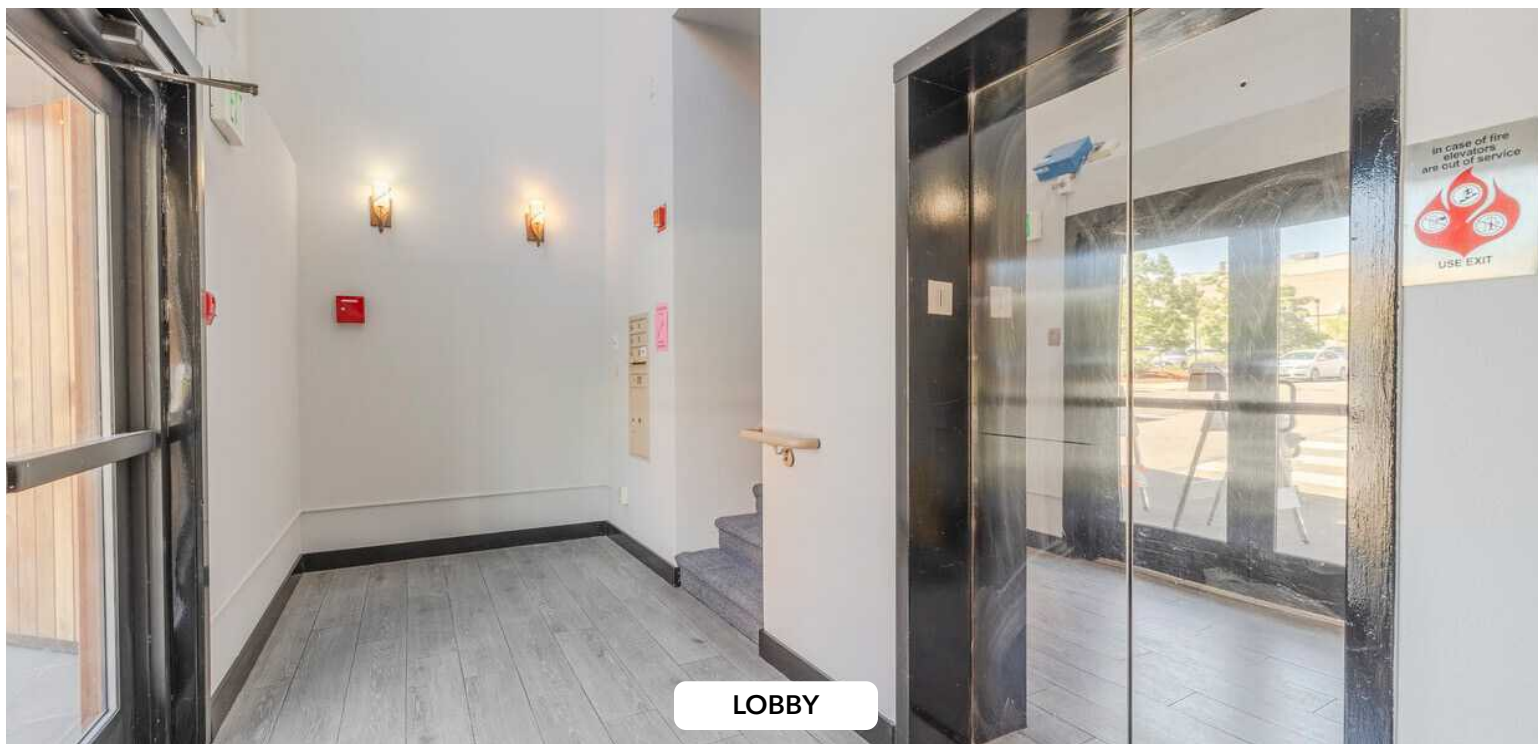
**JOHN BAUDER, ccim**  
jbauder@lee-associates.com  
D 253-238-0043

**HARRISON LAIRD**  
hlaird@lee-associates.com  
D 253-238-0044

All information furnished regarding property for sale, rental or financing is from sources deemed reliable, but no warranty or representation is made to the accuracy thereof and same is submitted to errors, omissions, change of price, rental or other conditions prior to sale, lease or financing or withdrawal without notice. No liability of any kind is to be imposed on the broker herein. 3610 S 17th St, Tacoma (Berg Medical Bldg)\Lease Flyer\Lease Flyer - 3610 S 17th St Tacoma 05.28.2024.indd

# 1001 PACIFIC BUILDING

1001 PACIFIC AVENUE, TACOMA, WA



## CONTACT

**JOHN BAUDER, CCIM**

[jbauder@lee-associates.com](mailto:jbauder@lee-associates.com)

D 253-238-0043

**HARRISON LAIRD**

[hlaird@lee-associates.com](mailto:hlaird@lee-associates.com)

D 253-238-0044

All information furnished regarding property for sale, rental or financing is from sources deemed reliable, but no warranty or representation is made to the accuracy thereof and same is submitted to errors, omissions, change of price, rental or other conditions prior to sale, lease or financing or withdrawal without notice. No liability of any kind is to be imposed on the broker herein. 3610 S 17th St, Tacoma (Berg Medical Bldg)\Lease Flyer\Lease Flyer - 3610 S 17th St Tacoma 05.28.2024.indd

# 1001 PACIFIC BUILDING

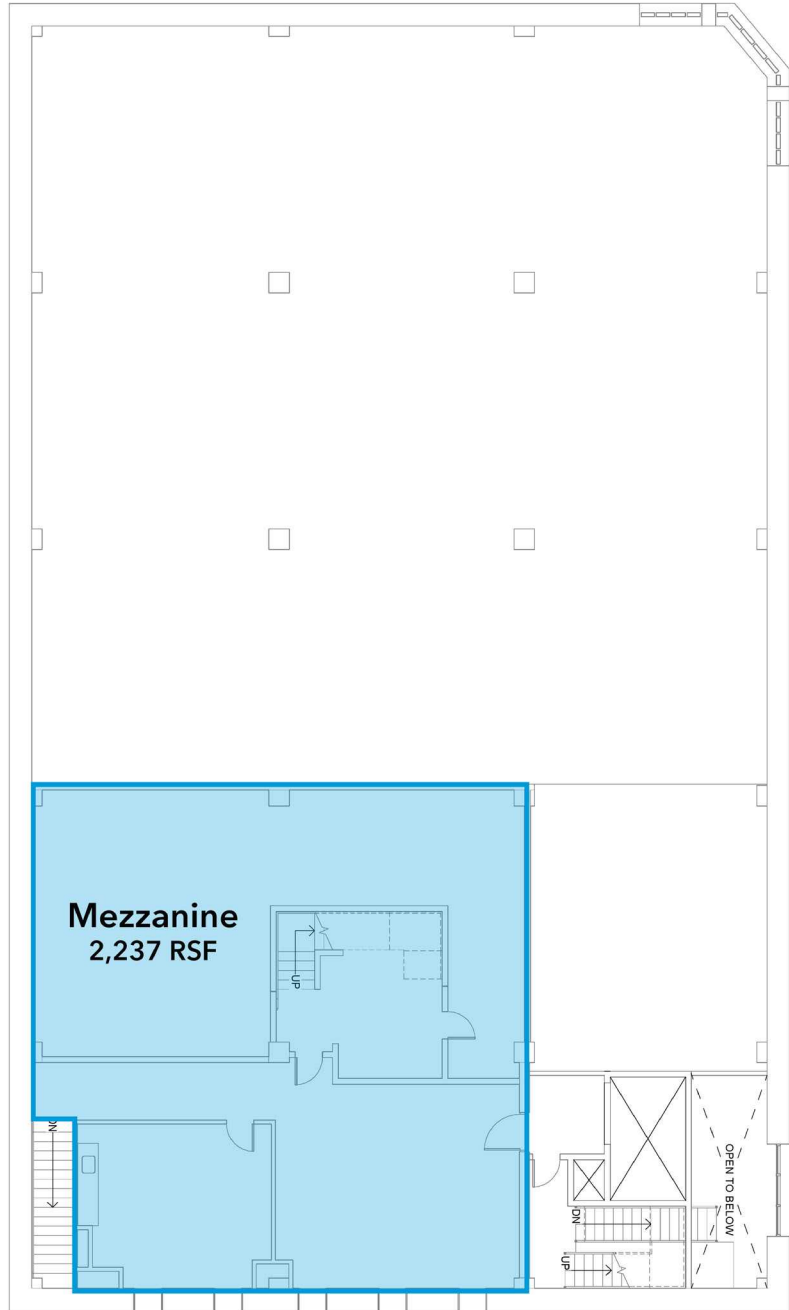
1001 PACIFIC AVENUE, TACOMA, WA

## FLOOR PLANS

### 1<sup>ST</sup> FLOOR RETAIL



### MEZZANINE



## CONTACT

**JOHN BAUDER, CCIM**

[jbauder@lee-associates.com](mailto:jbauder@lee-associates.com)

D 253-238-0043

**HARRISON LAIRD**

[hlaire@lee-associates.com](mailto:hlaire@lee-associates.com)

D 253-238-0044

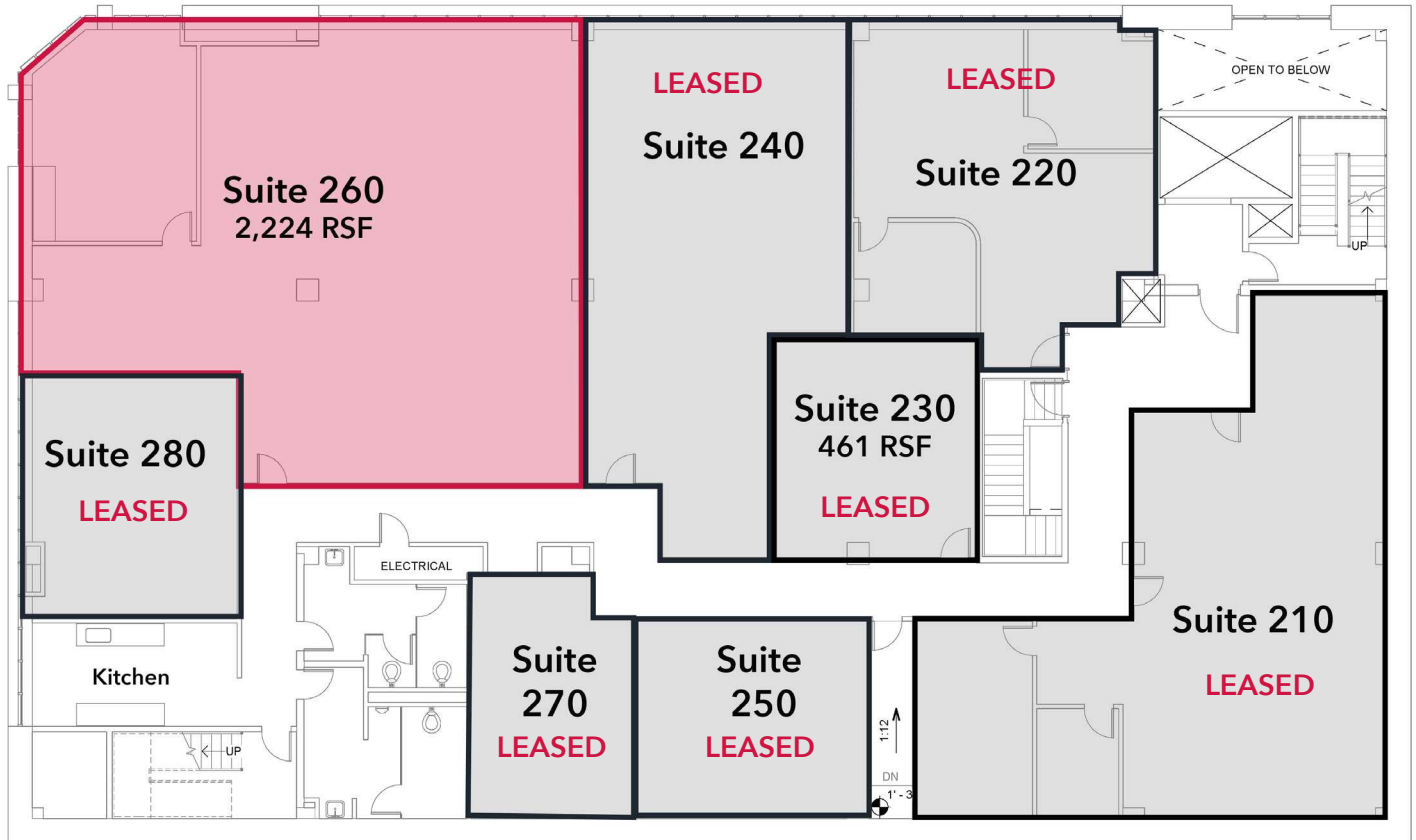
All information furnished regarding property for sale, rental or financing is from sources deemed reliable, but no warranty or representation is made to the accuracy thereof and same is submitted to errors, omissions, change of price, rental or other conditions prior to sale, lease or financing or withdrawal without notice. No liability of any kind is to be imposed on the broker herein. 3610 S 17th St, Tacoma (Berg Medical Bldg)\Lease Flyer\Lease Flyer - 3610 S 17th St Tacoma 05.28.2024.indd

# 1001 PACIFIC BUILDING

1001 PACIFIC AVENUE, TACOMA, WA

## FLOOR PLANS

### 2<sup>ND</sup> FLOOR



## CONTACT

**JOHN BAUDER, ccim**

[jbauder@lee-associates.com](mailto:jbauder@lee-associates.com)

D 253-238-0043

**HARRISON LAIRD**

[hlaird@lee-associates.com](mailto:hlaird@lee-associates.com)

D 253-238-0044

All information furnished regarding property for sale, rental or financing is from sources deemed reliable, but no warranty or representation is made to the accuracy thereof and same is submitted to errors, omissions, change of price, rental or other conditions prior to sale, lease or financing or withdrawal without notice. No liability of any kind is to be imposed on the broker herein. 3610 S 17th St, Tacoma (Berg Medical Bldg)\Lease Flyer\Lease Flyer - 3610 S 17th St Tacoma 05.28.2024.indd