

Peninsula Medical Building

19917 7th Ave NE, Poulsbo, WA



19917
Entrance
← 2nd Floor
← 3rd Floor
← 4th Floor
← 5th Floor
← 6th Floor
← 7th Floor
← 8th Floor
← 9th Floor
← 10th Floor
← 11th Floor
← 12th Floor
← 13th Floor
← 14th Floor
← 15th Floor
← 16th Floor
← 17th Floor
← 18th Floor
← 19th Floor
← 20th Floor
← 21st Floor
← 22nd Floor
← 23rd Floor
← 24th Floor
← 25th Floor
← 26th Floor
← 27th Floor
← 28th Floor
← 29th Floor
← 30th Floor

OWNED & MANAGED BY

ANCHOR
HEALTH PROPERTIES

UW Medicine

19917

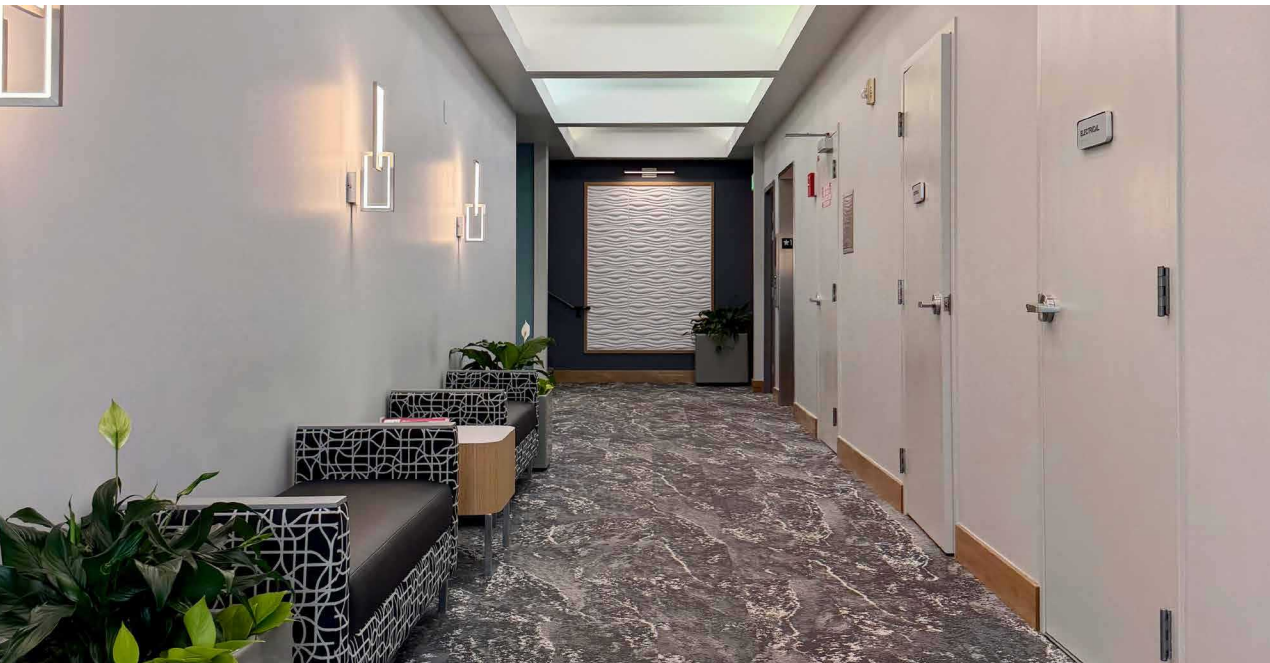
Fred Hutch
Cancer Center

FOR LEASE
253.722.1400
WILL FARM
DREW FARM

PENINSULA
MEDICAL BUILDING
19917

EXCLUSIVELY LEASED BY

km Kidder
Mathews



Premier Medical Outpatient Building

SUITE INFORMATION

Suite 102: 2,052 RSF

Suite 205: 1,978 RSF - 9,600 RSF

GREAT PARKING

Parking approximately
5 stalls/1,000 SF free parking

REPUTABLE TENANTS

Existing medical tenants include:
Fred Hutchinson Cancer Care, Virginia Mason
Franciscan, and Allied Dermatology

STREET PRESENCE

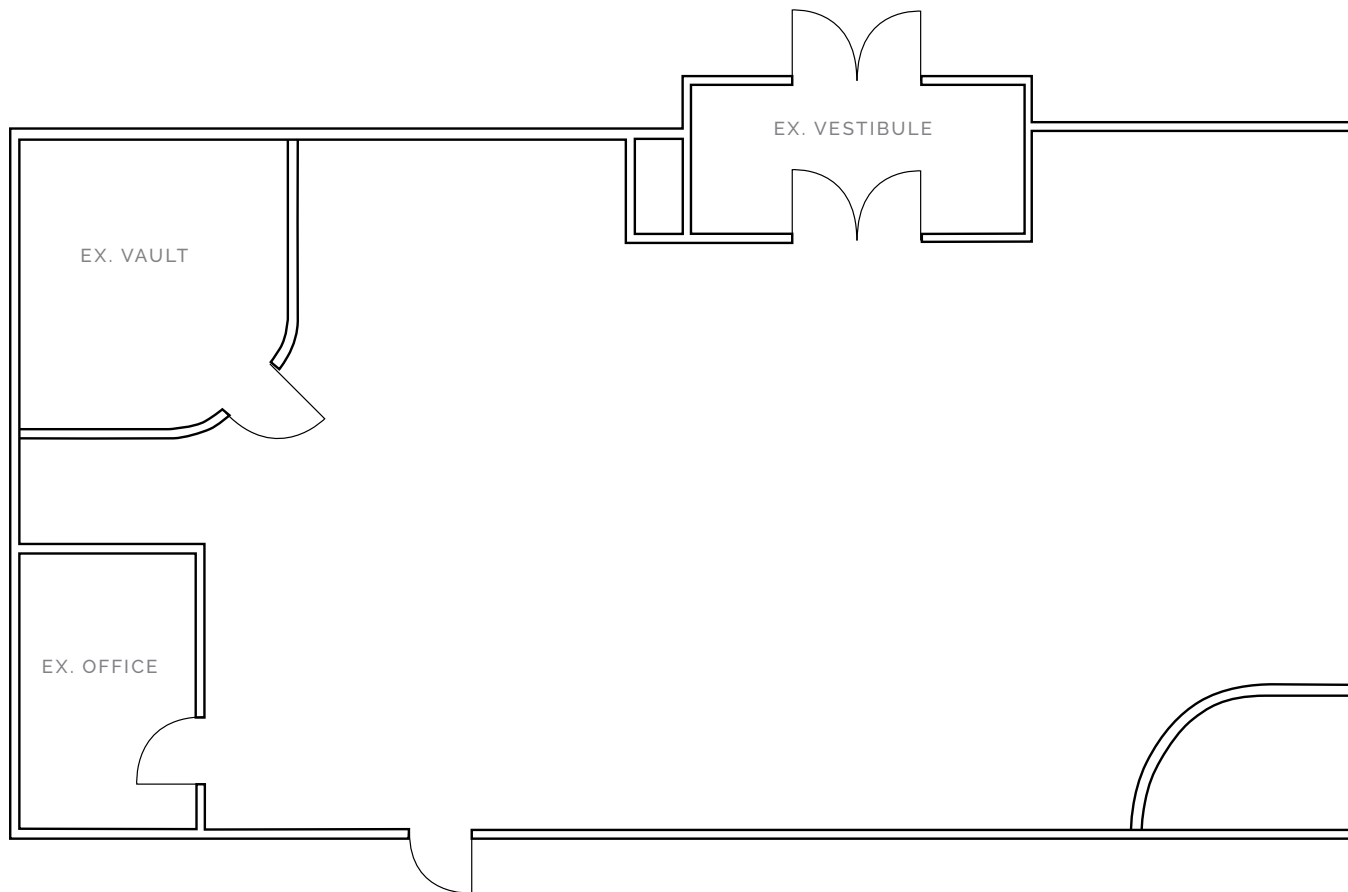
Excellent street presence with monument
signage and potential exterior building
signage

EXCELLENT LOCATION

Provide services to Kitsap County from the
centrally located Poulsbo Market

Suite 102

Current as-built plan, former bank branch.



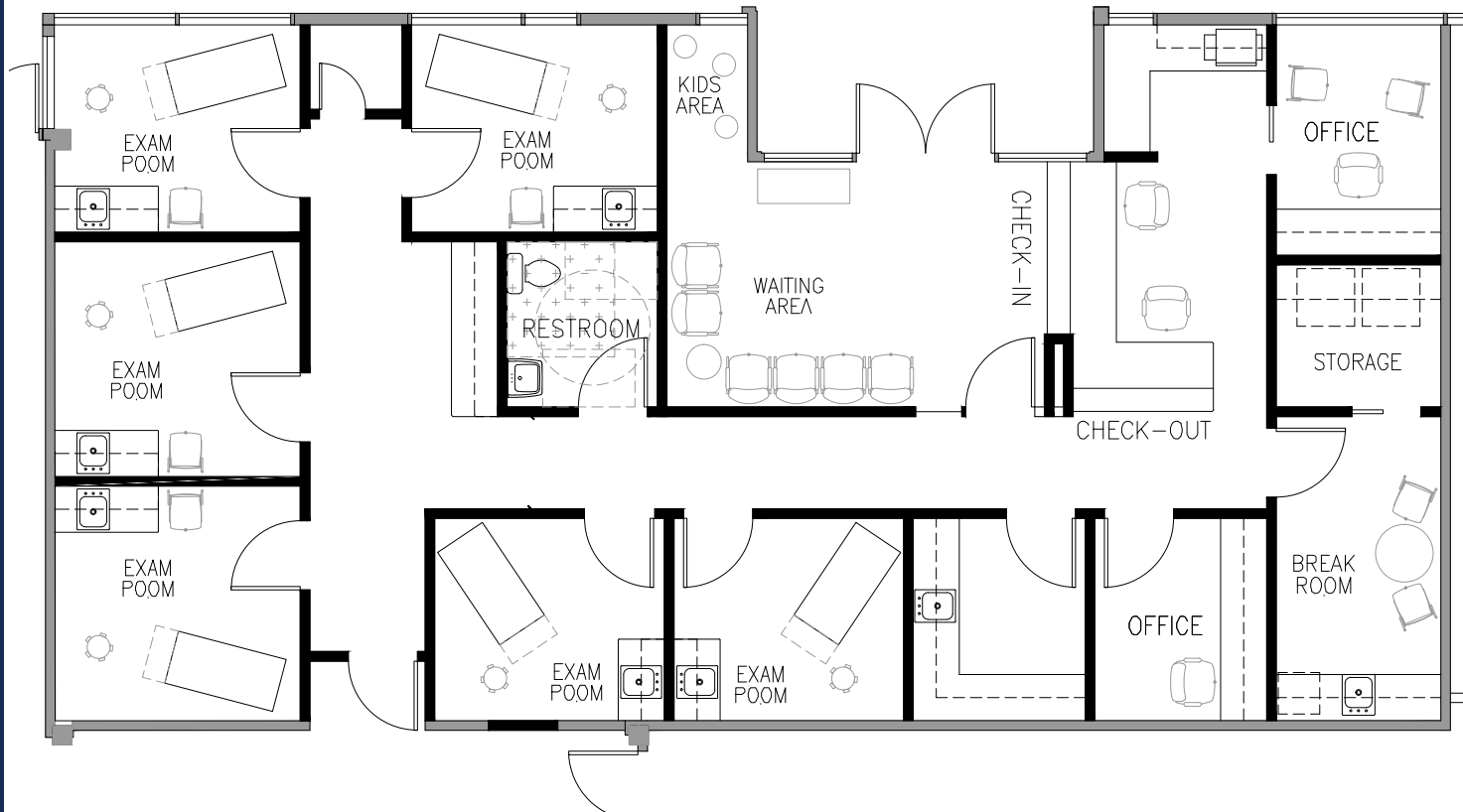
2,052
SQUARE FEET

Contact
BROKERS FOR PRICING

Suite 102

TEST FIT

Space program: Spacious reception and waiting room with kids play area, 4 exam rooms, 1 in suite restroom, 2 private offices, nurses station, staff breakroom, storage/laundry room, storage/tech room and lab room

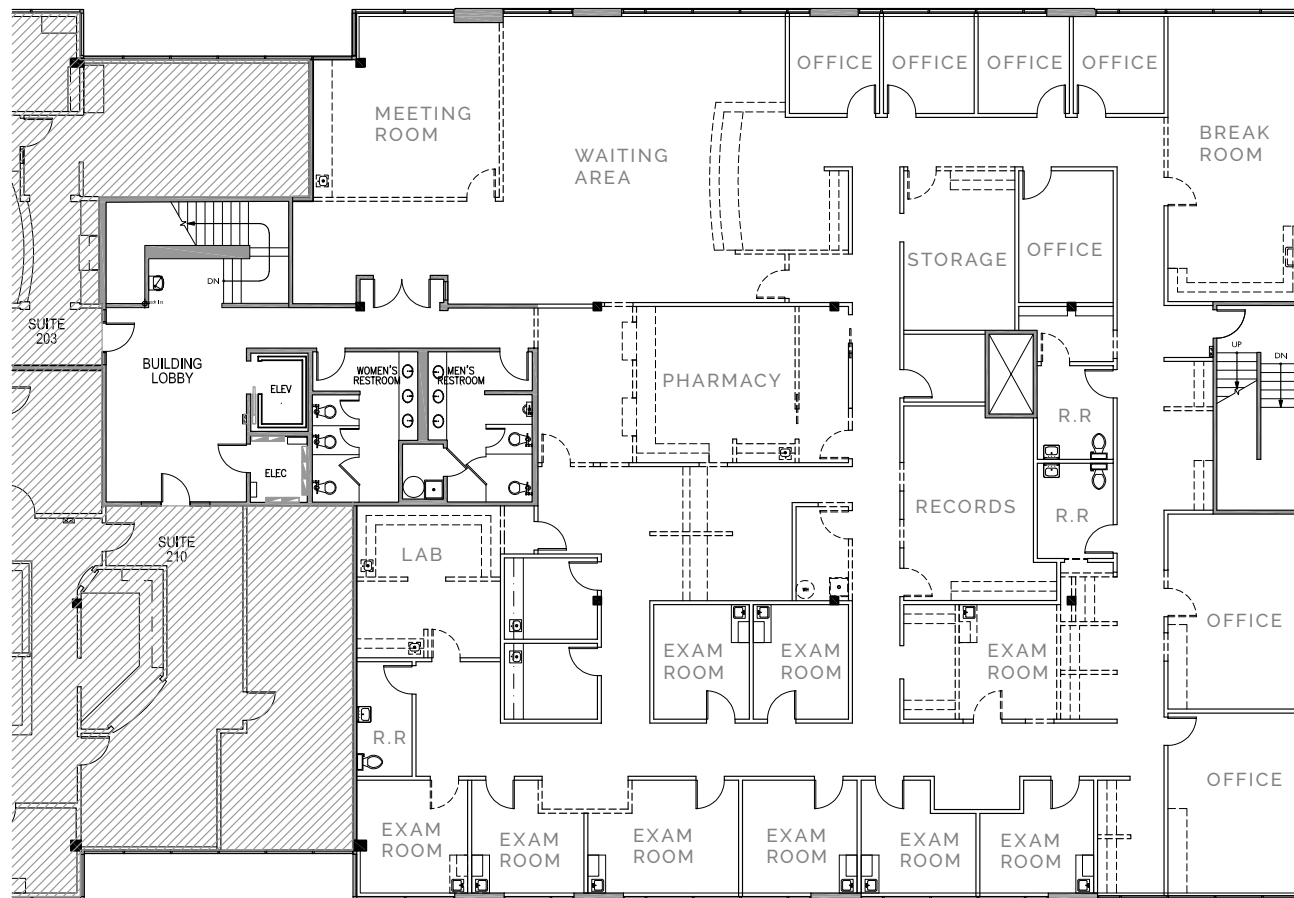


2,052
SQUARE FEET

Contact
BROKERS FOR PRICING

Suite 205

Test fit suites vary from 1,705 SF - 3,775 SF



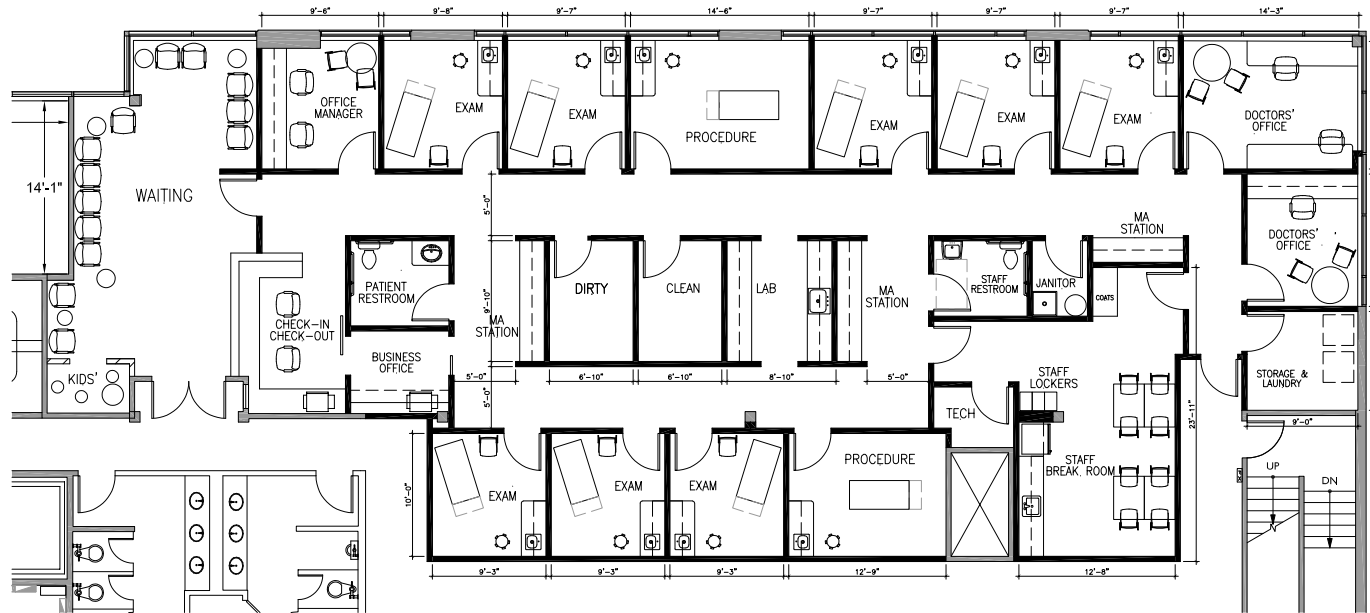
9,600
TOTAL SQUARE FEET

Contact
BROKERS FOR PRICING

Suite 205A

TEST FIT

Space program: 8 exam rooms, 2 procedure rooms, 3 private offices, 1 business office, 3 nurse stations, 1 dirty utility room, 1 clean utility room, 1 lab room, 2 in-suite restrooms, 1 in-suite laundry/storage room, 1 janitor's room, 1 IT room, spacious waiting room



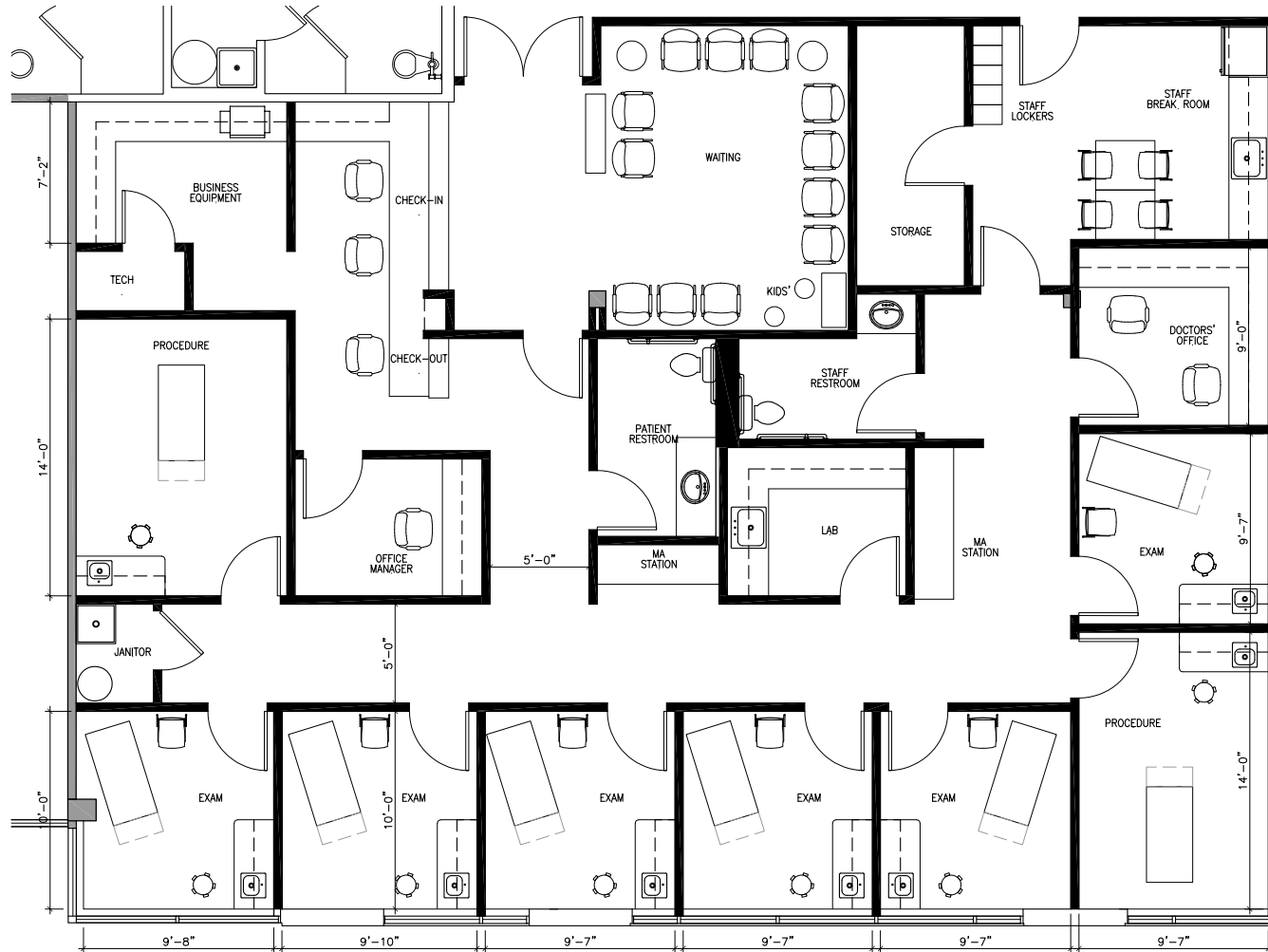
4,379
SQUARE FEET

Contact
BROKERS FOR PRICING

Suite 205B

TEST FIT

Space program: 6 exam rooms, 2 procedure rooms, 2 private offices, 2 nurse stations, 2 in-suite restrooms, 1 lab room, staff room, waiting room and reception area



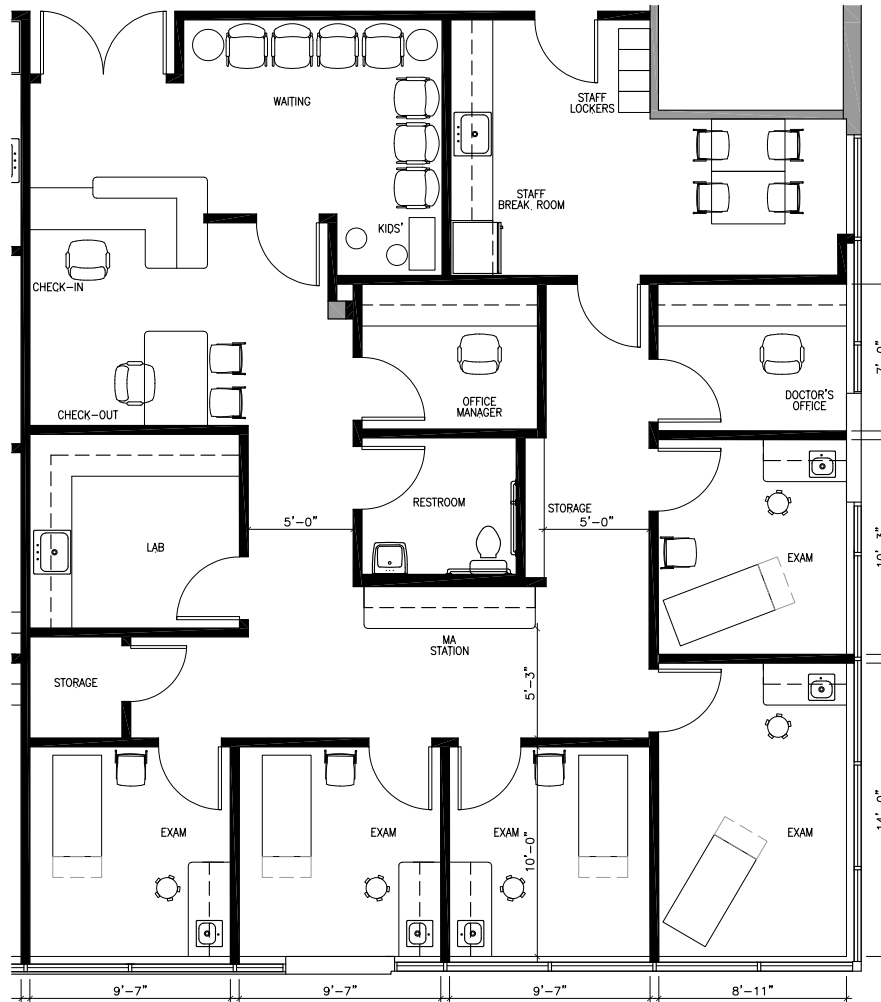
3,047
SQUARE FEET

Contact
BROKERS FOR PRICING

Suite 205C

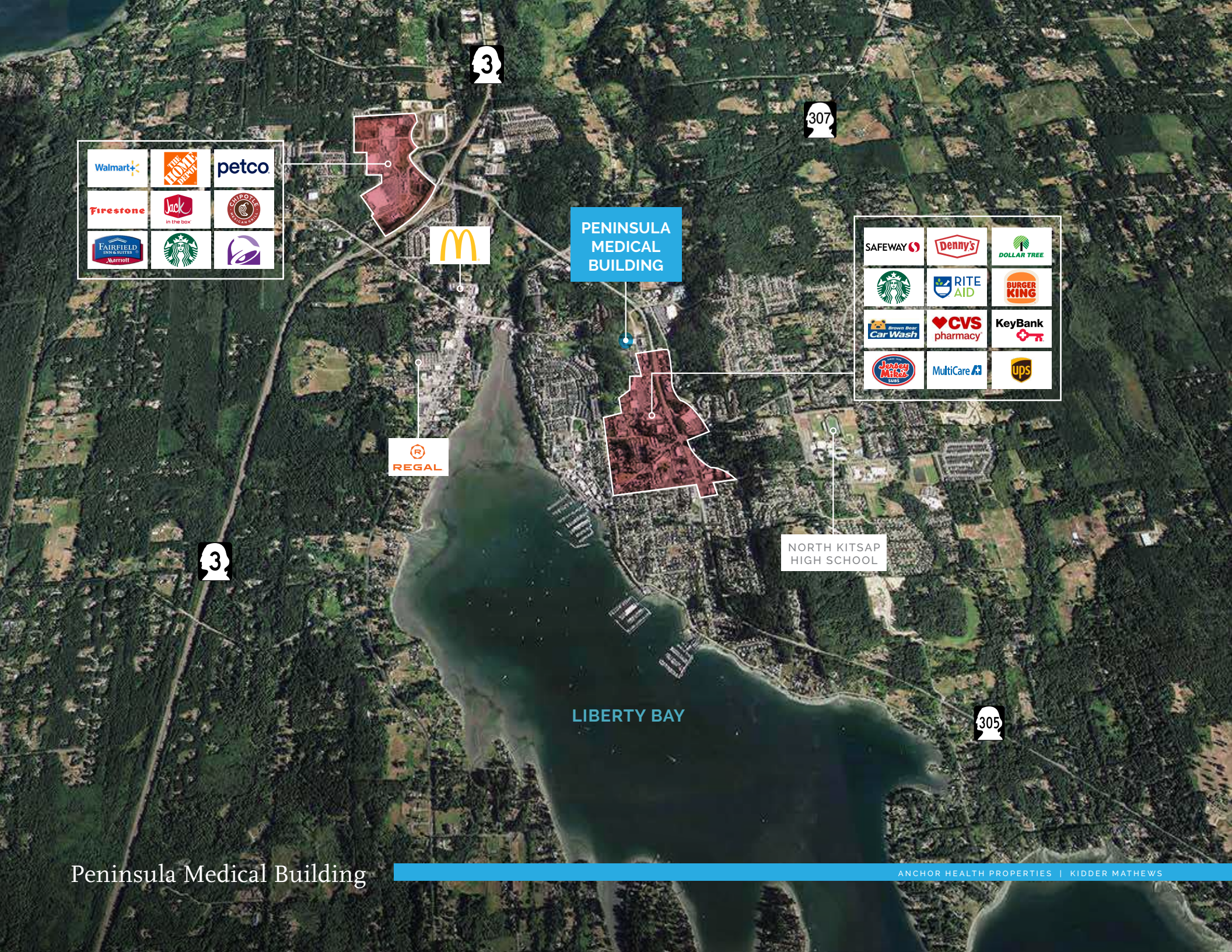
TEST FIT

Space program: 5 exam rooms, 2 private offices, 1 nurse station, 1 lab room, 1 in-suite restroom, staff room



1,978
SQUARE FEET

Contact
BROKERS FOR PRICING

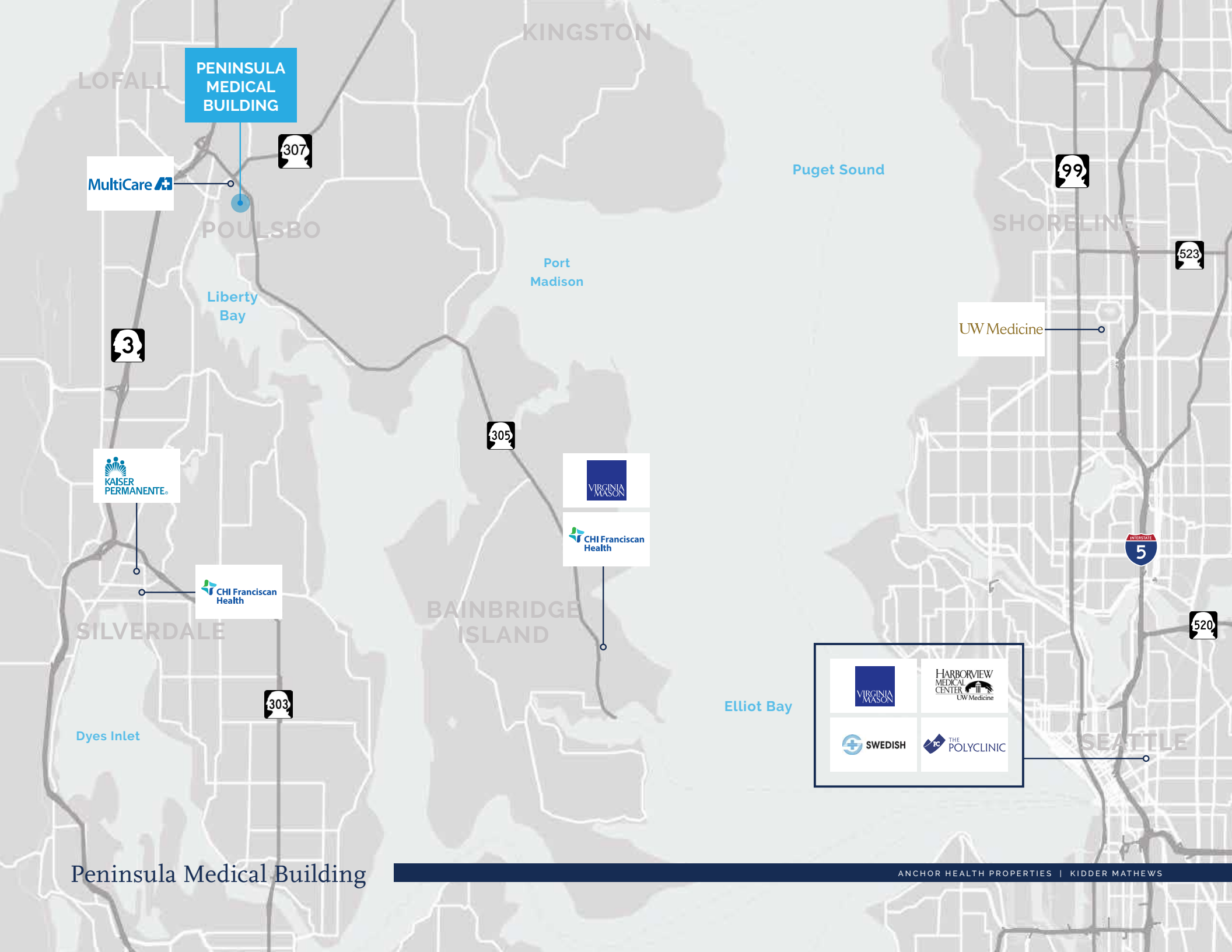


PENINSULA
MEDICAL
BUILDING

NORTH KITSAP
HIGH SCHOOL

LIBERTY BAY

REGAL



**PENINSULA
MEDICAL
BUILDING**

MultiCare



KAISER
PERMANENTE

CHI Franciscan
Health

SILVERDALE



Dyes Inlet

Peninsula Medical Building

KINGSTON

POULSBO

Liberty
Bay

Port
Madison



VIRGINIA
MASON
CHI Franciscan
Health

BAINBRIDGE
ISLAND

Elliot Bay

Puget Sound



SHORELINE



UW Medicine



SEATTLE

Peninsula Medical Building

DREW FRAME, SIOR

Senior Vice President
253.948.7032
drew.frame@kidder.com

RYAN KERSHAW

Associate
206.949.1334
ryan.kershaw@kidder.com

KIDDER.COM

This information supplied herein is from sources we deem reliable. It is provided without any representation, warranty, or guarantee, expressed or implied as to its accuracy. Prospective Buyer or Tenant should conduct an independent investigation and verification of all matters deemed to be material, including, but not limited to, statements of income and expenses. Consult your attorney, accountant, or other professional advisor.

OWNED & MANAGED BY

ANCHOR
HEALTH PROPERTIES

EXCLUSIVELY LEASED BY

km Kidder
Mathews