

skyline tower

10900 NE 4th St., Bellevue, WA 98004

OFFICE FOR LEASE

10,583 - 50,667 RSF
Available Now

923 - 4,088 RSF
Available 10/1/2026

MIKE SCHRECK

Executive Managing Director
206.850.7000
mike.schreck@nrmk.com

TIM O'KEEFE

Executive Managing Director
425.362.1401
tim.okeefe@nrmk.com

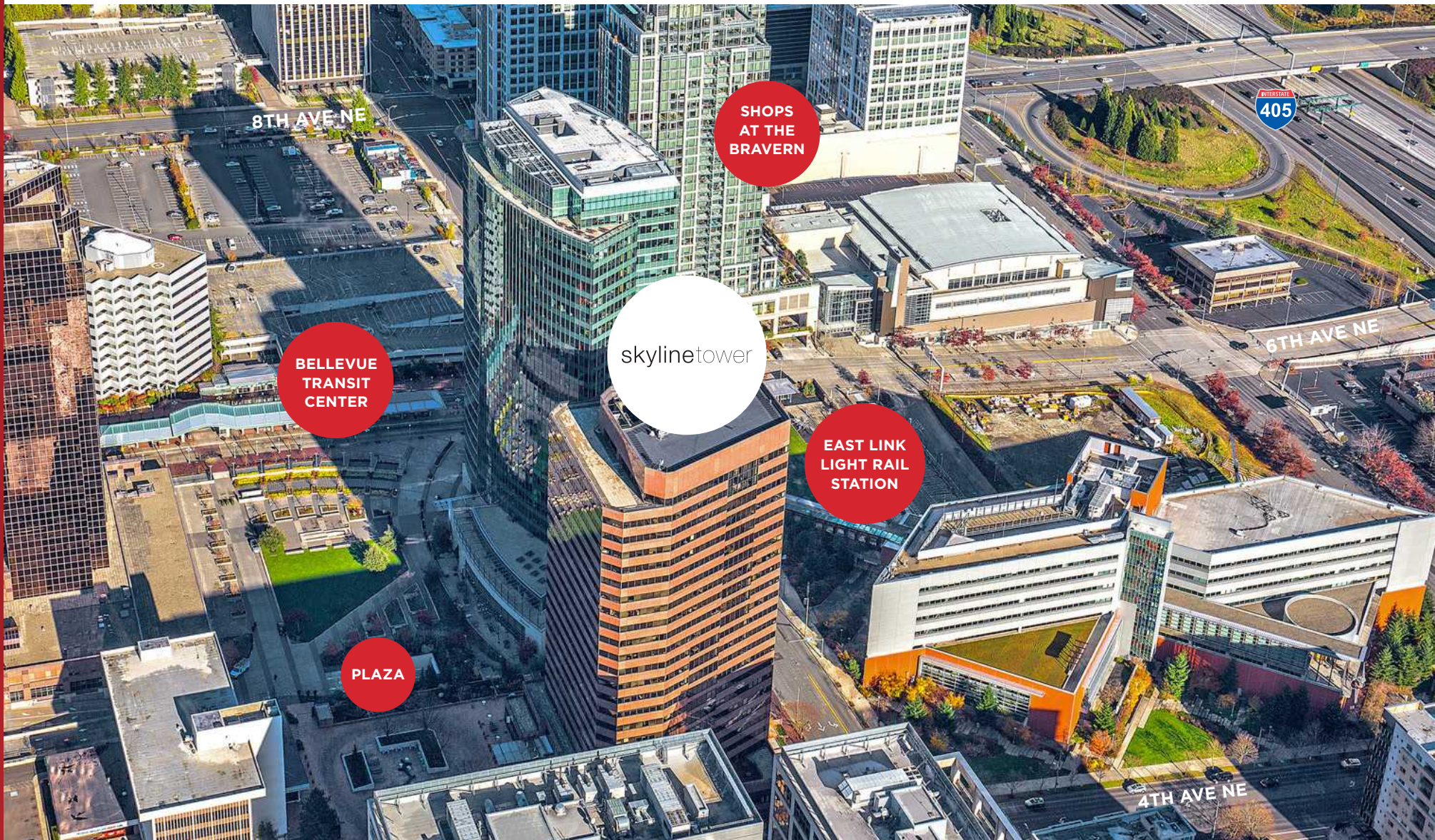
NEWMARK



Location

Skyline Tower is located in Bellevue's central business district, and offers immediate access to the freeway system (I-405, SR 520 and I-90), the Bellevue Transit Center and the East Link Light Rail Station.

Rated a 92 by walkscore.com and deemed "A Walker's Paradise", Skyline Tower offers pedestrian-friendly access to Bellevue Square, The Shops at the Bravern, and over 100 restaurants, coffee shops, grocers, stores, and entertainment venues.



Building Features

- **24-story, Class A Office Building** that can be customized to meet the needs of growing businesses
- **LEED Gold Certified** for best-in-class energy and environmental strategies and practices
- **Large, Efficient Floor Plates** 18,500 square feet of leasable column free space per floor
- **Ample Ceiling Height** Generous 11'6" - 12' ceiling heights and large windows offer enhanced natural lighting and expansive views
- **Climate Control** HVAC system updated with fully digital controls allows tenants to modify temperature levels to meet individual needs
- **Fire Life Safety** Building is fitted with a state-of-the-art Cerberus Polytronics system
- **Elevators** Eight digitally controlled passenger elevators; Two dedicated garage elevators, one freight elevator
- **Parking** Five-level underground parking facility offering 2.0/1,000 RSF



10900 NE 4th St., Bellevue, WA 98004

Amenities



Newly renovated lobby and exterior plaza with modern finishes and gathering areas that promote collaboration.



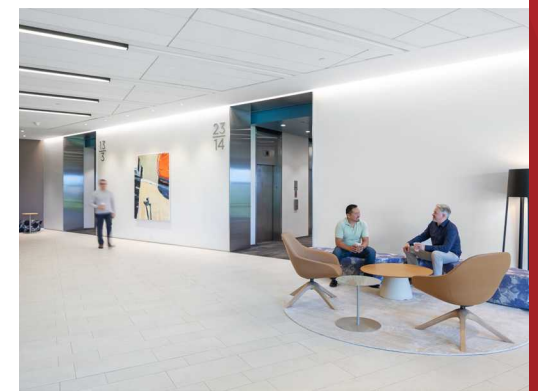
The best private fitness center on the Eastside with 3,400 SF of state-of-the-art equipment and a shower room with daily towel service.



Store your bike in Skyline's on-site, 750 SF premier bike facility with 32 bike lockers and direct access to the fitness center and shower rooms.



Modernized plaza provides comfortable outdoor seating areas and attracts a variety of daily food trucks.



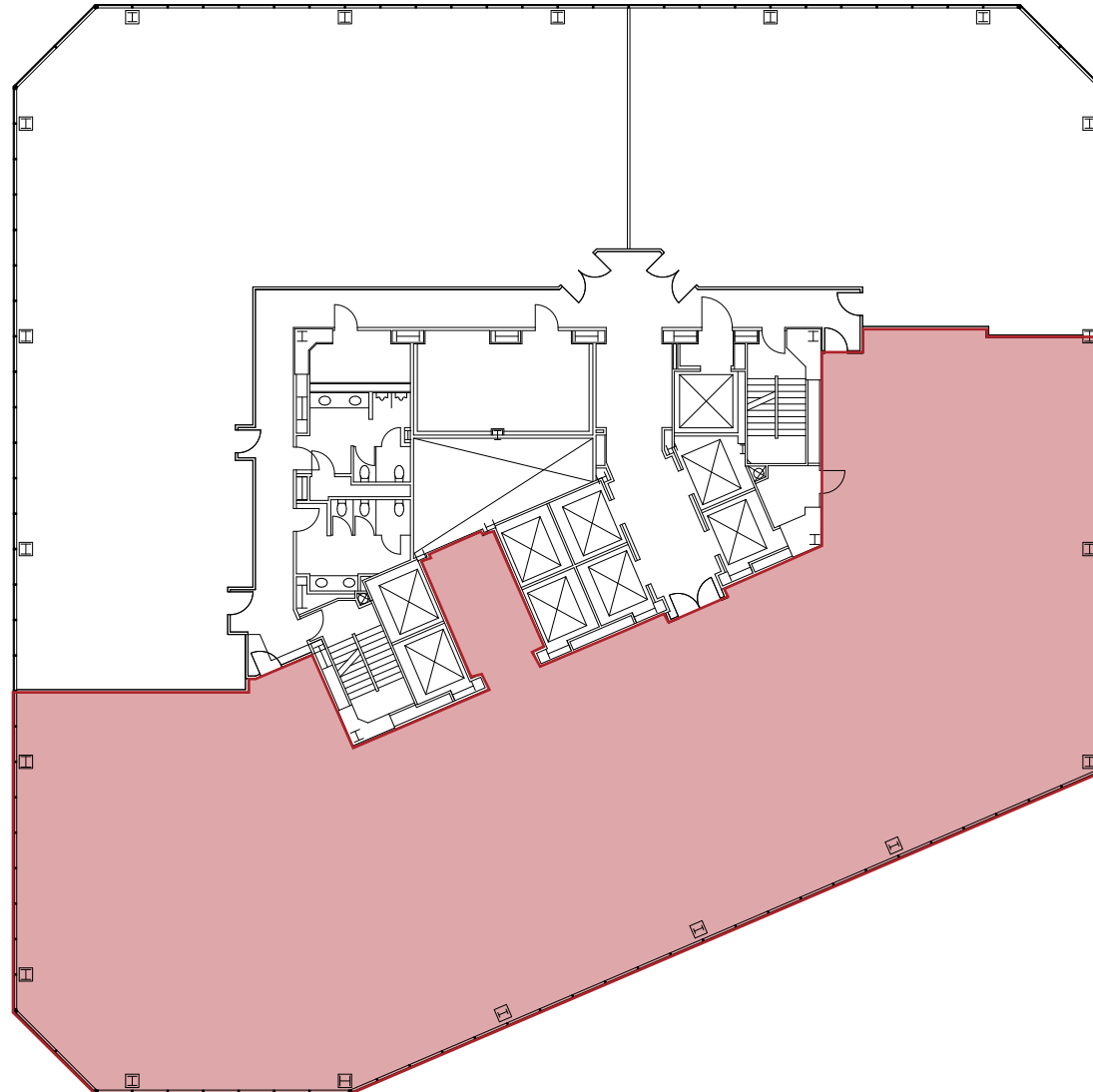
14th Floor

SUITE 1400

9,678 SF

Available Now

[VIEW VIRTUAL TOUR](#)



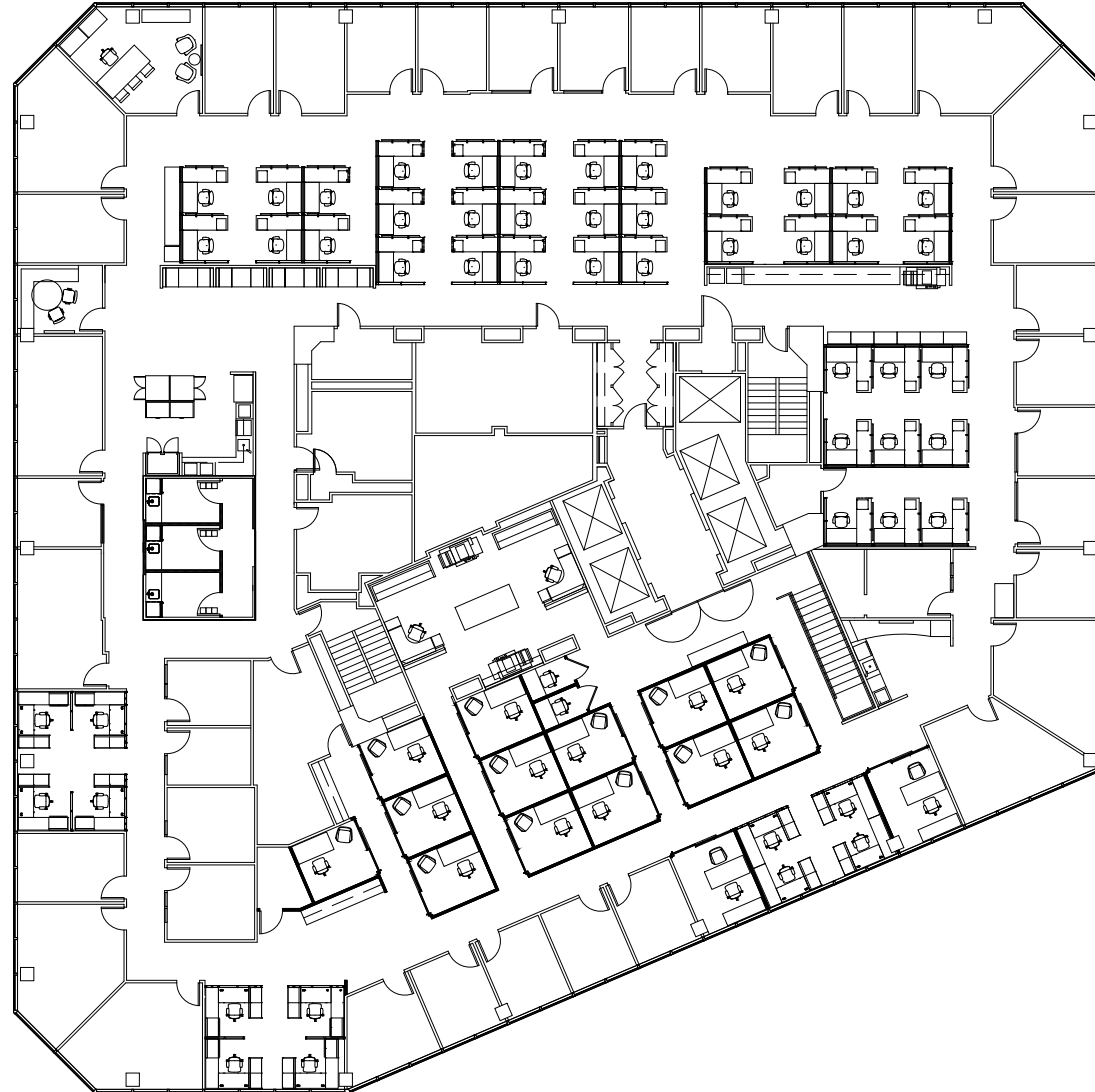
16th Floor

SUITE 1600
18,953 SF
Available Now



17th Floor

SUITE 1700
18,953 SF
Available Now



22nd Floor

SUITE 2220

923 SF

Available 10/1/26

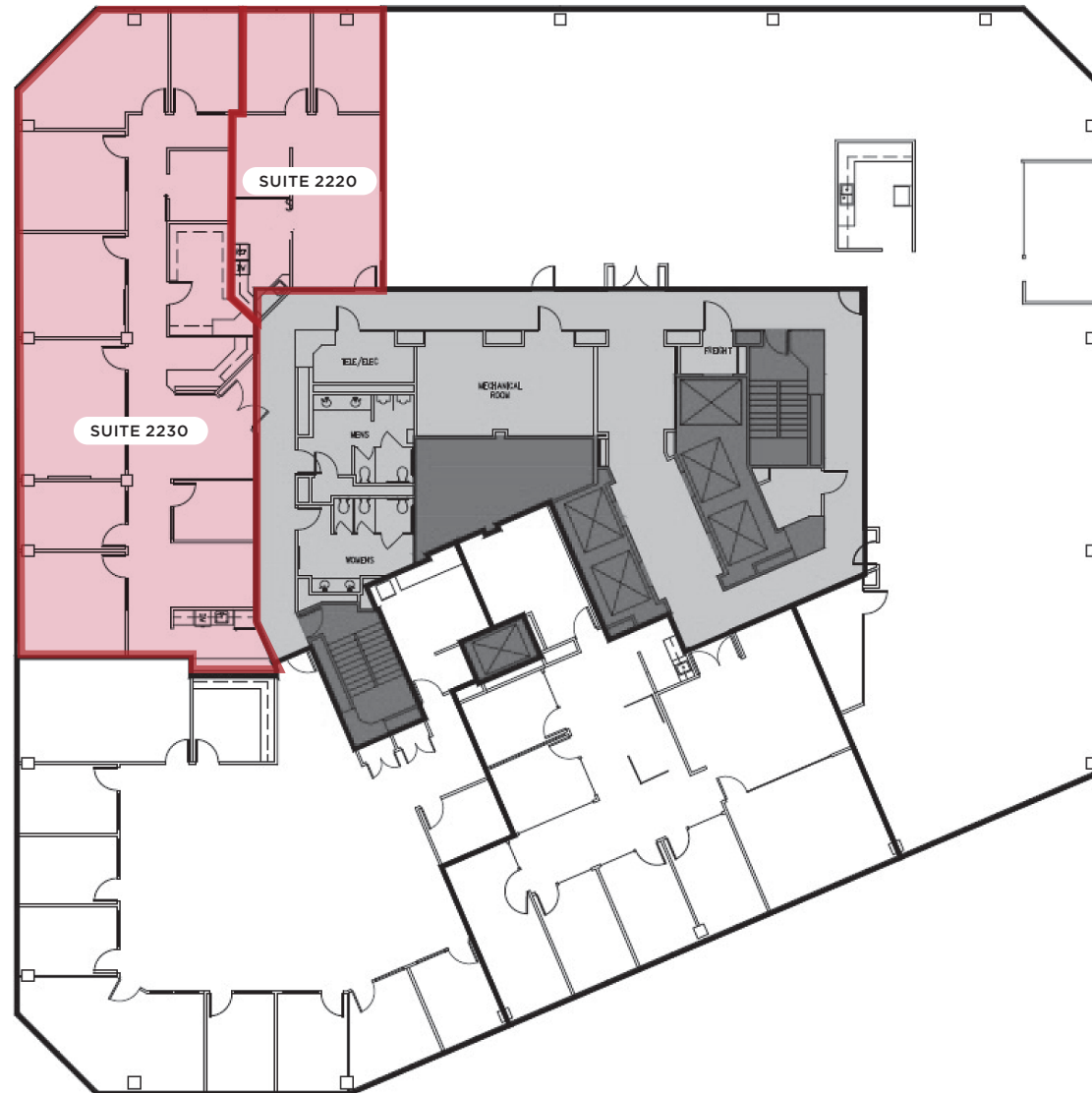
SUITE 2230

3,165 SF

Available 10/1/26

SUITE 2220/2230

4,088 SF



MIKE SCHRECK

Executive Managing Director

206.850.7000

mike.schreck@nmrk.com

TIM O'KEEFE

Executive Managing Director

425.362.1401

tim.okeefe@nmrk.com

NEWMARK

The information contained herein has been obtained from sources deemed reliable but has not been verified and no guarantee, warranty or representation, either express or implied, is made with respect to such information. Terms of sale or lease and availability are subject to change or withdrawal without notice.