

BYRD  
REAL ESTATE  
GROUP



**FOR LEASE**

Great Location  
with Easy Access to  
Sunset Hwy & I-90

**\$0.65 psf NNN**

Light Industrial Zoning  
Parcel # 15243.0023

**1100 S GARFIELD  
AIRWAY HEIGHTS**

**BLDG F**

**CONTACT**

US NOW



Doug Byrd 509.216.6575  
Sharon Reynolds 509.326.8080



Doug@ByrdRealEstateGroup.com  
Sharon@ByrdRealEstateGroup.com



1912 N Division, Ste 201  
Spokane WA 99207

- +/- 12,000 SF WHSE AVAILABLE
- A PORTION OF A 9.1 ACRE SITE
- 6 - 16' X 16' OHD'S
- 20' CLEAR SPAN
- HEATED & INSULATED

[www.ByrdRealEstateGroup.com](http://www.ByrdRealEstateGroup.com)

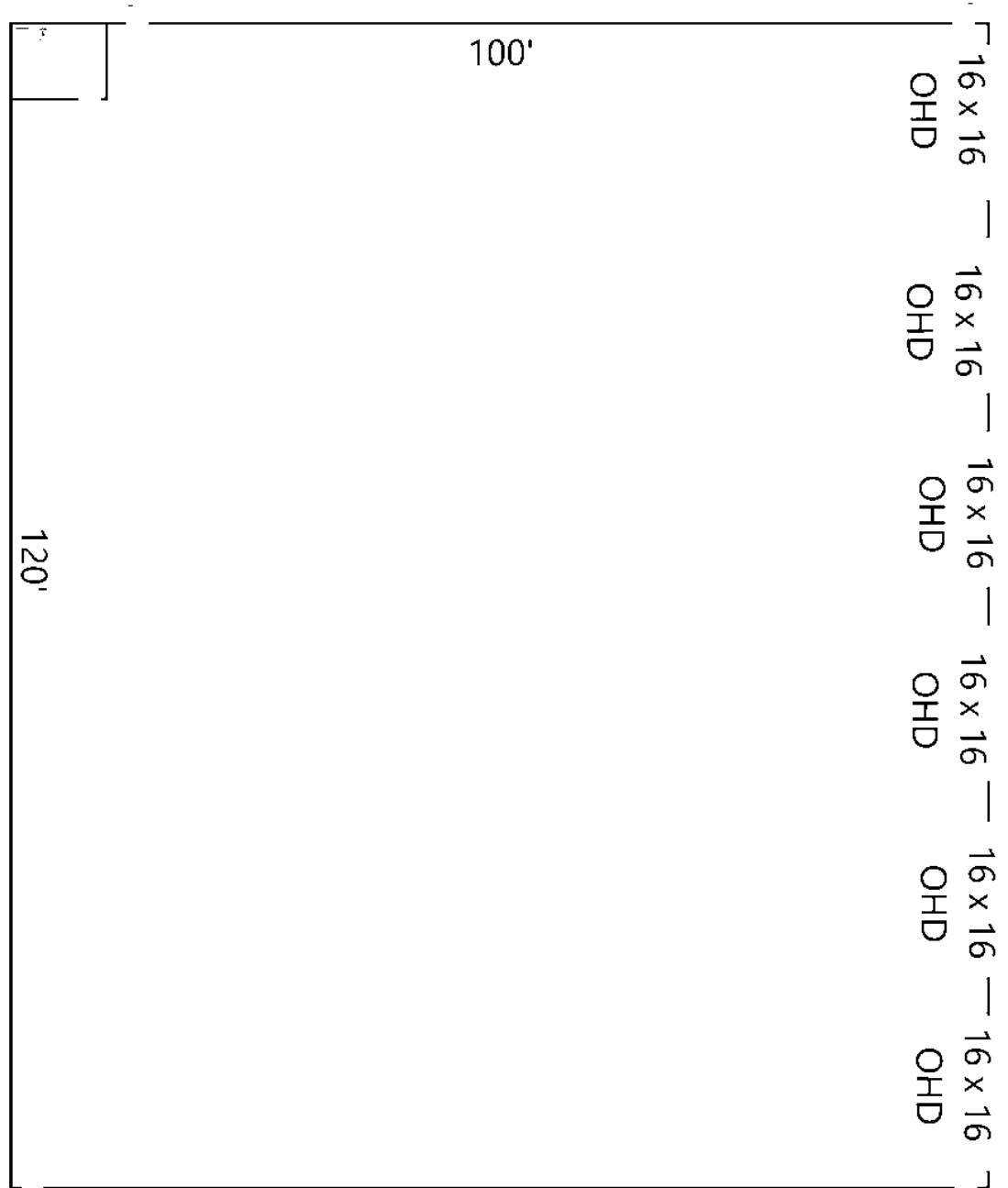
**PRODUCING PROPERTY SOLUTIONS**

All information is furnished by the Owner &/or Broker and believed to be complete and correct. The Owner &/or Broker cannot be responsible for changes, errors, omissions or withdrawals of this offering. The above information is from sources deemed reliable but should be verified by parties that could be adversely affected by any statements or information. This is not an offering of sub-agency, with commission splits to be determined.



BYRD  
REAL ESTATE  
GROUP

# 1100 S GARFIELD



## FLOORPLAN

## CONTACT

US NOW



Doug Byrd 509.216.6575  
Sharon Reynolds 509.326.8080



Doug@ByrdRealEstateGroup.com  
Sharon@ByrdRealEstateGroup.com

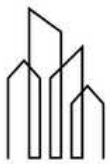


1912 N Division, Ste 201  
Spokane WA 99207

[www.ByrdRealEstateGroup.com](http://www.ByrdRealEstateGroup.com)

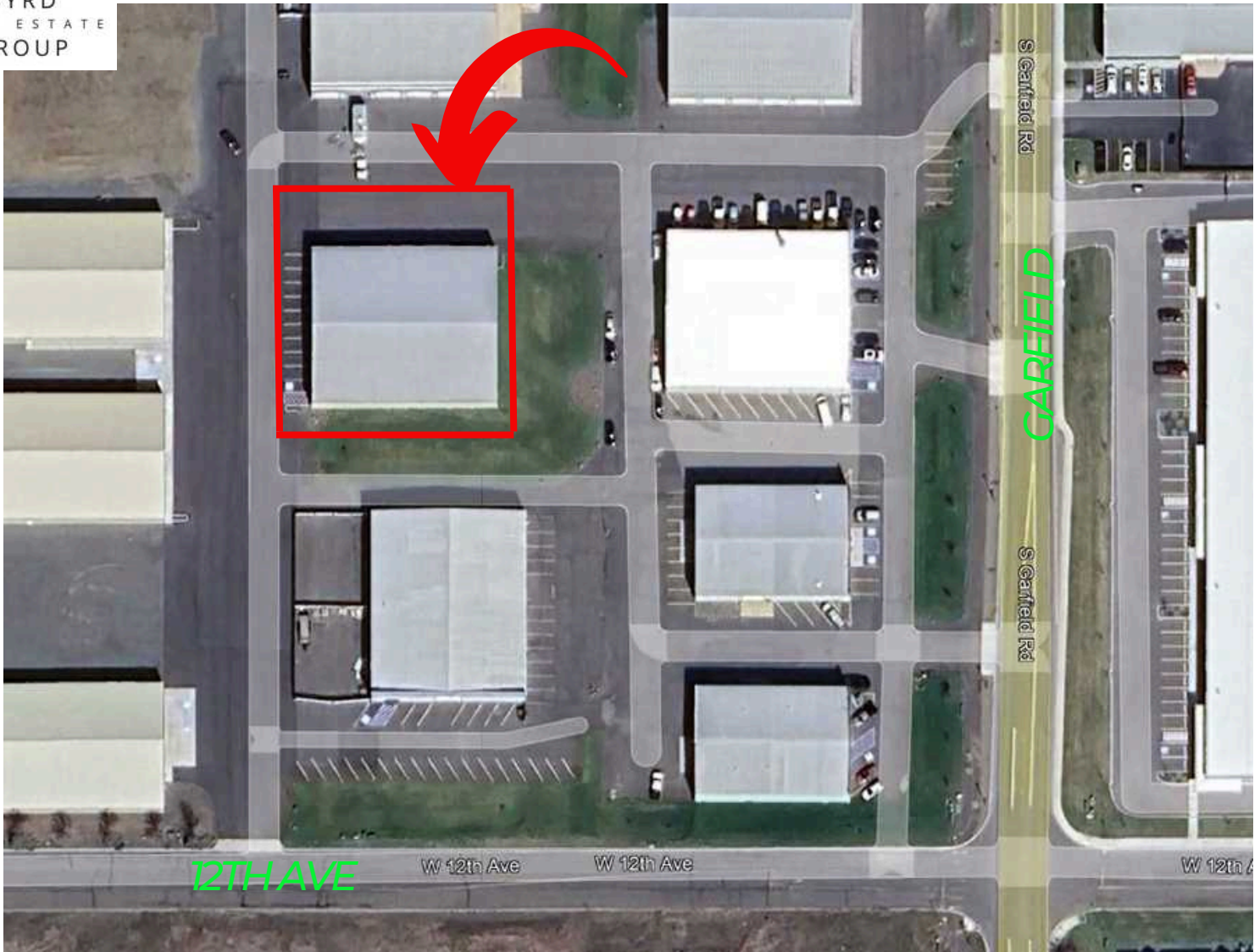
**PRODUCING PROPERTY SOLUTIONS**

All information is furnished by the Owner &/or Broker and believed to be complete and correct. The Owner &/or Broker cannot be responsible for changes, errors, omissions or withdrawals of this offering. The above information is from sources deemed reliable but should be verified by parties that could be adversely affected by any statements or information. This is not an offering of sub-agency, with commission splits to be determined.



BYRD  
REAL ESTATE  
GROUP

# 1100 S GARFIELD



## CONTACT

US NOW



Doug Byrd 509.216.6575  
Sharon Reynolds 509.326.8080



Doug@ByrdRealEstateGroup.com  
Sharon@ByrdRealEstateGroup.com



1912 N Division, Ste 201  
Spokane WA 99207

[www.ByrdRealEstateGroup.com](http://www.ByrdRealEstateGroup.com)

**PRODUCING PROPERTY SOLUTIONS**

All information is furnished by the Owner &/or Broker and believed to be complete and correct. The Owner &/or Broker cannot be responsible for changes, errors, omissions or withdrawals of this offering. The above information is from sources deemed reliable but should be verified by parties that could be adversely affected by any statements or information. This is not an offering of sub-agency, with commission splits to be determined.



## CONTACT

US NOW



Doug Byrd 509.216.6575  
Sharon Reynolds 509.326.8080



Doug@ByrdRealEstateGroup.com  
Sharon@ByrdRealEstateGroup.com



1912 N Division, Ste 201  
Spokane WA 99207