

ALLENMORE B
MEDICAL
OFFICE
BUILDING

Recently renovated medical
office located on the
Allenmore Hospital Campus



PROPERTY
VIDEO



OWNED BY

HEALTHCARE
REALTY

LEASING BY

 **Kidder
Mathews**

ALLENMORE B MEDICAL OFFICE BUILDING

The Allenmore B MOB is an on campus renovated medical office building in an unbeatable Tacoma location

1901 S Union Ave, Tacoma, WA

AVAILABILITIES

SUITE 1012	1,206 SF
SUITE 3005	1,840 SF
SUITE 6005*	1,201 SF
SUITE 6007*	2,082 SF

*CONTIGIOUS FOR 3,283 SF



ALLENMORE B
MEDICAL
OFFICE
BUILDING

Property Features



RECENT RENOVATIONS

The entire interior of the building has been remodeled, including lobby, ceiling, lighting, common area and restrooms



UNBEATABLE LOCATION

Located on the hospital campus with direct access to the hospital



HEALTHCARE SYNERGY

The Multicare operated hospital and supporting MOB allows for patient ease and all in one access



ACCESS

Convenient access to Highway 16 and I-5. Direct access to public transportation and eventually the new Light Rail expansion



PARKING

Abundant parking at 5.0/1,000 SF with easy access to and from the building



ON-SITE MANAGEMENT

Healthcare Realty has a full-time on-site management team consistent with their top tier reputation

ALLENMORE B
MEDICAL
OFFICE
BUILDING



Brand new interior renovations



ALLENMORE B
MEDICAL
OFFICE
BUILDING



ALLENMORE B
MEDICAL
OFFICE
BUILDING

Suite 1012

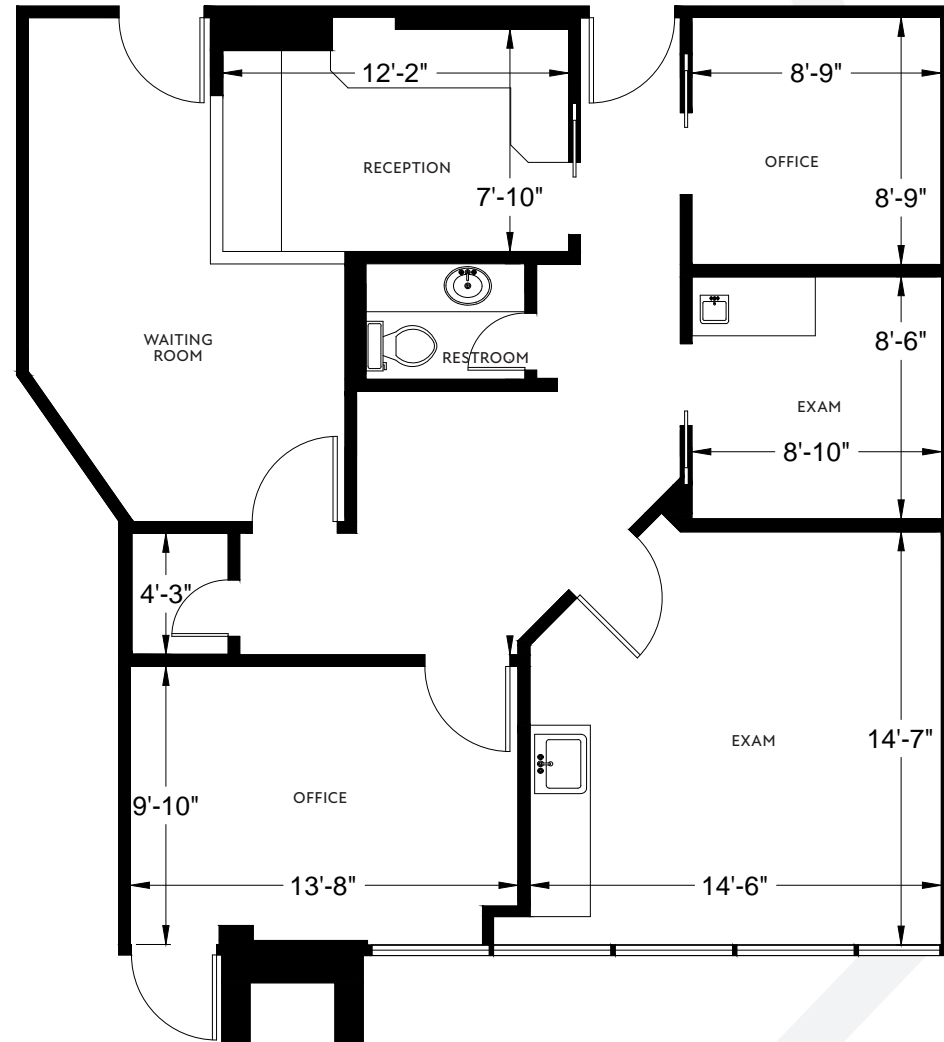
As-Built

SPACE PROGRAM

- 2 EXAM ROOMS
- 2 PRIVATE OFFICE
- IN-SUITE RESTROOM
- RECEPTION AREA

±1,206

square feet available



ALLENMORE B
MEDICAL
OFFICE
BUILDING

Suite 1012

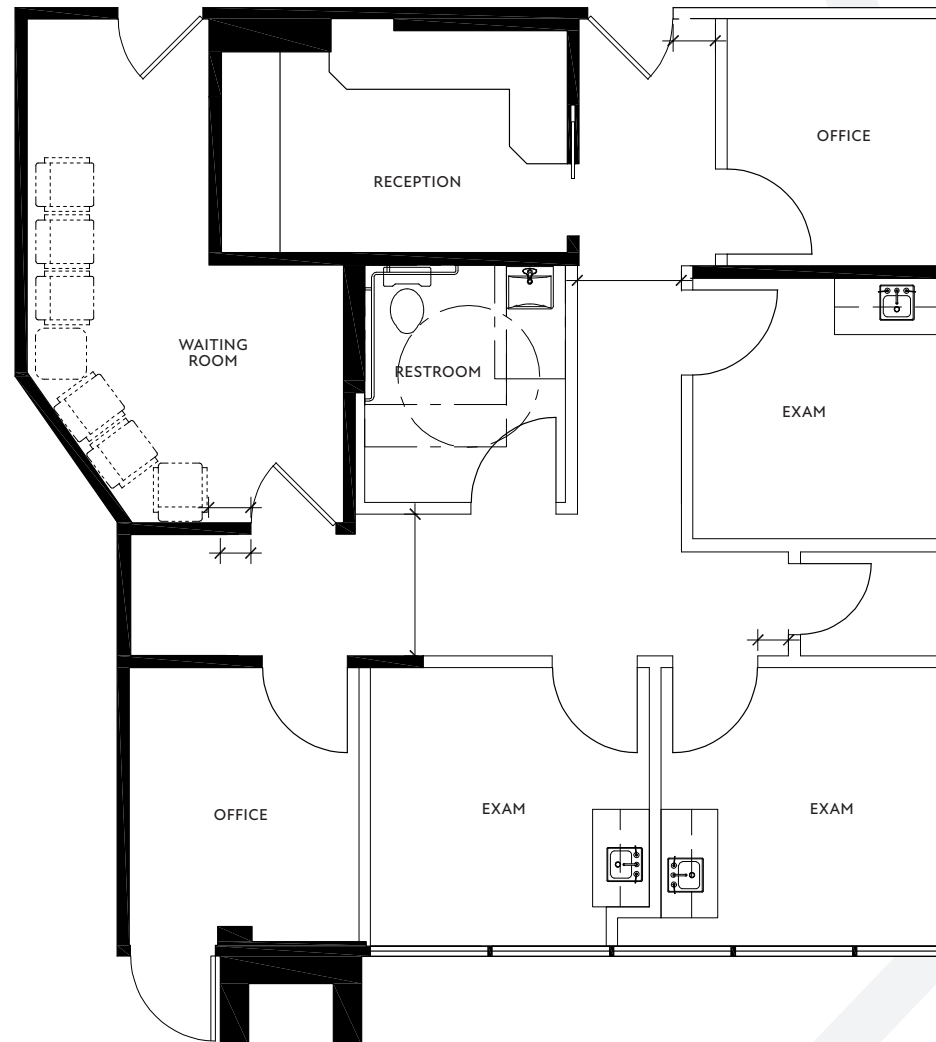
Test Fit

SPACE PROGRAM

- 3 EXAM ROOMS
- 2 PRIVATE OFFICE
- IN-SUITE RESTROOM

±1,206

square feet available



ALLENMORE B
MEDICAL
OFFICE
BUILDING

Suite 3005

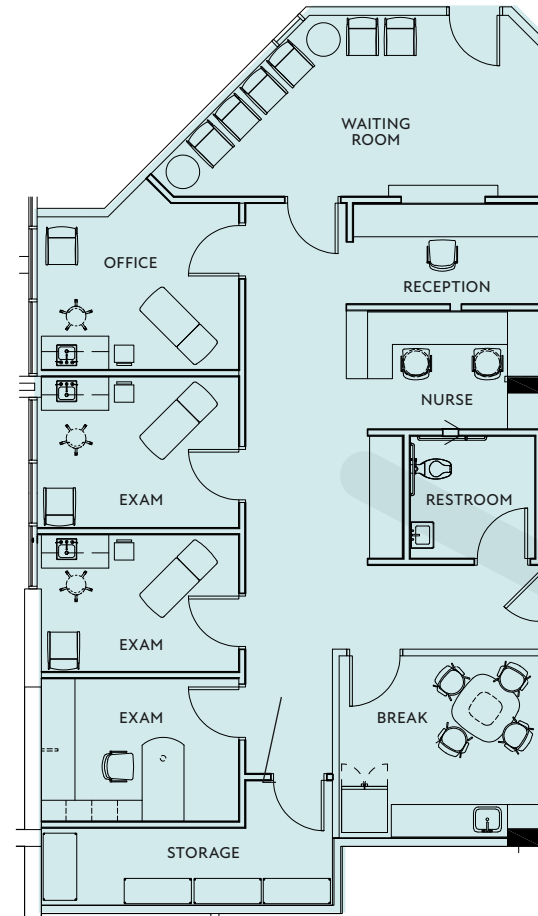
Test Fit

SPACE PROGRAM

- 3 EXAM ROOMS
- 1 PRIVATE OFFICE
- NURSE STATION
- IN-SUITE RESTROOM
- STORAGE ROOM
- STAFF ROOM
- WAITING/RECEPTION AREA

±1,840

square feet available



ALLENMORE B
MEDICAL
OFFICE
BUILDING

Suite 3005

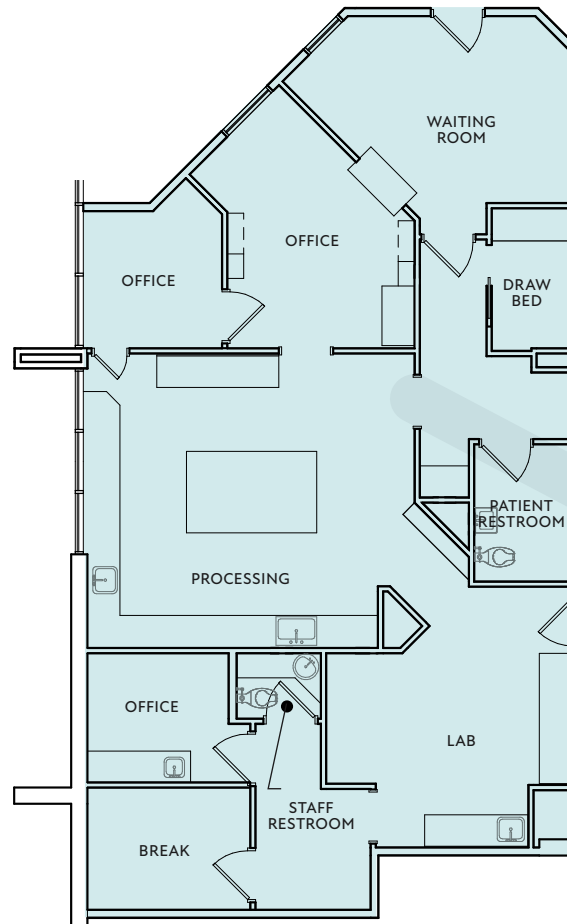
As-Built

SPACE PROGRAM

- 3 OFFICES
- PROCESSING ROOM
- LAB
- 2 IN-SUITE RESTROOMS

±1,840

square feet available



ALLENMORE B
MEDICAL
OFFICE
BUILDING

Suite 6005 & 6007

(Contiguous)

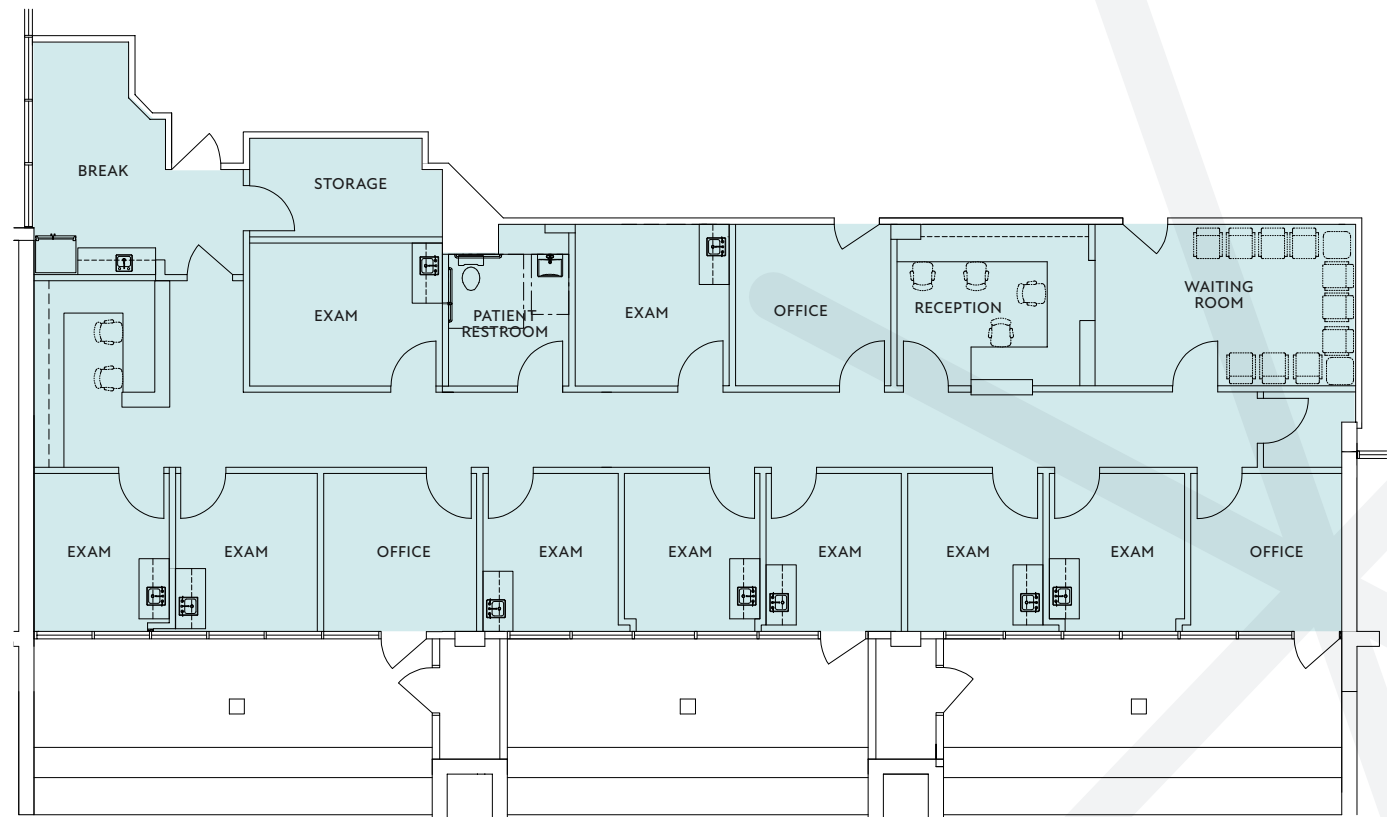
Test Fit

SPACE PROGRAM

- 9 EXAM ROOMS
- 3 PRIVATE OFFICE
- NURSE STATION
- IN-SUITE RESTROOM
- STORAGE ROOM
- STAFF ROOM
- WAITING/RECEPTION AREA

±3,283

square feet available



ALLENMORE B
MEDICAL
OFFICE
BUILDING

Suite 6005

As-Built

±1,201

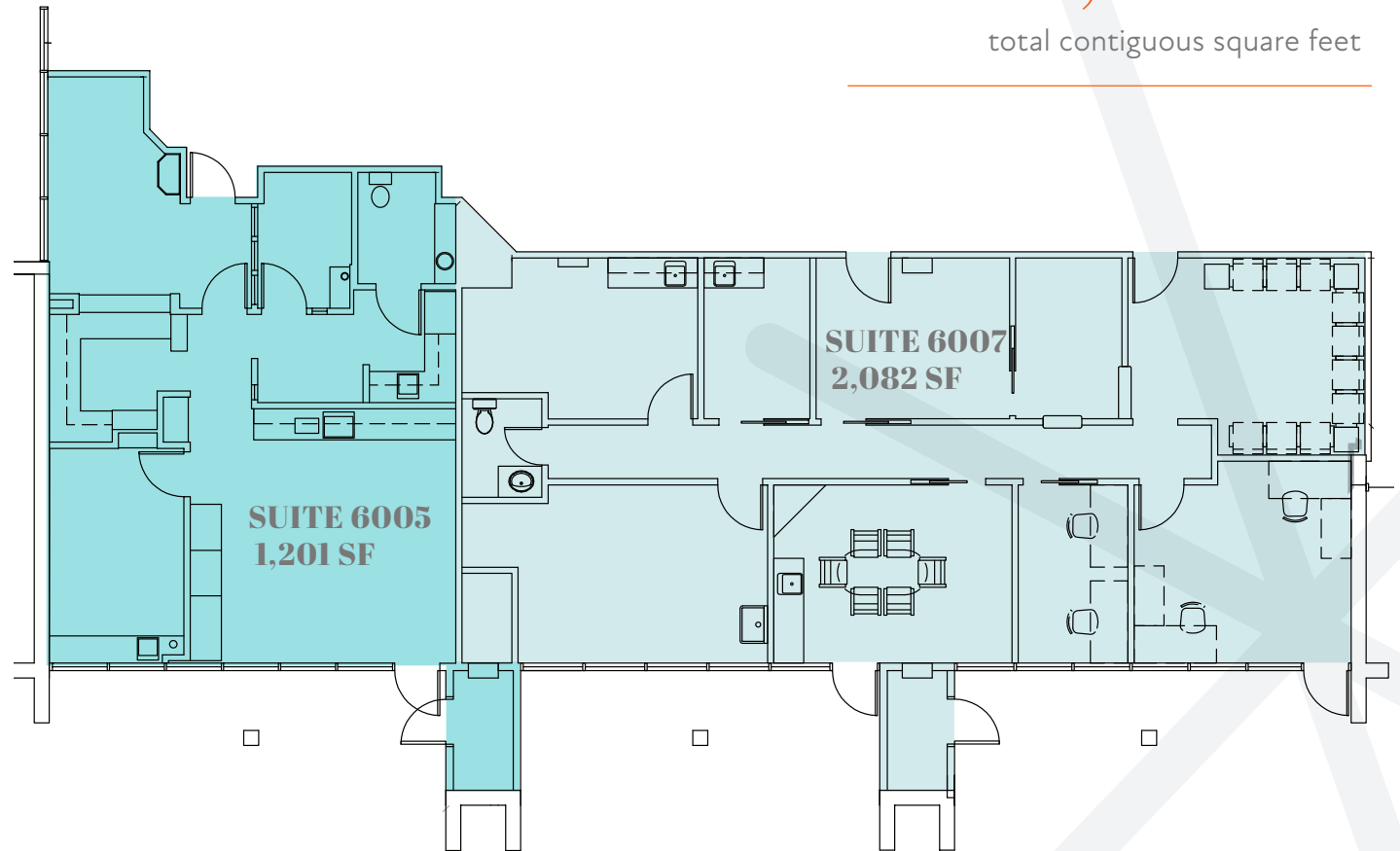
square feet available

Suite 6007

As-Built

±2,082

square feet available



±3,283

total contiguous square feet

ALLENMORE B
MEDICAL
OFFICE
BUILDING

Suite 6007

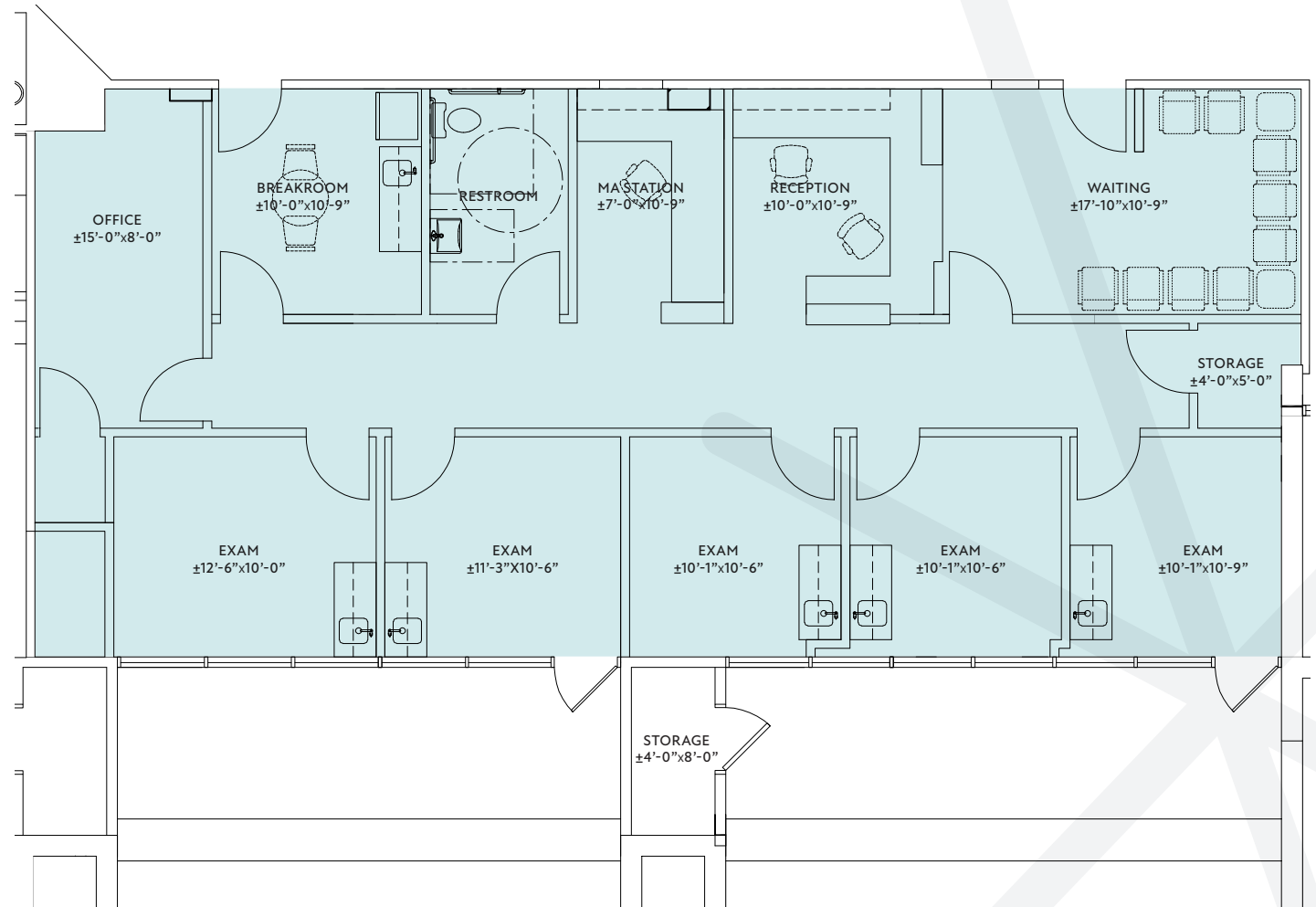
Test Fit

SPACE PROGRAM

- 5 EXAM ROOMS
- 1 PRIVATE OFFICE
- NURSE STATION
- IN-SUITE RESTROOM
- 3 STORAGE ROOMS
- STAFF ROOM
- WAITING/RECEPTION AREA

±2,082

square feet available



ALLENMORE B MEDICAL OFFICE BUILDING

COMMENCEMENT BAY

MultiCare Tacoma General Hospital/
Mary Bridge Children's Hospital

ALLENMORE B
MEDICAL OFFICE
BUILDING

St Joseph
Medical Center

Allenmore
Hospital

TACOMA LINK RAIL

- o- Hilltop Tacoma Link Extension (2022)
- o- Tacoma Dome - Theater District (In-Service)
- St Joseph - TCC Extension (2039)

The connection
your employees
need and your
patients deserve.

5 min

drive to the Tacoma General Hospital /
Mary Bridge Medical Center

5 min

drive to the St. Joseph Medical Center

5 min

drive to Downtown Tacoma

5 min

drive to Highway 705 / Interstate 5

ALLENMORE B MEDICAL OFFICE BUILDING

For additional leasing information, contact

DREW FRAME, SIOR

Senior Vice President
253.948.7032
drew.frame@kidder.com

RYAN KERSHAW

Associate
206.949.1334
ryan.kershaw@kidder.com

1201 Pacific Avenue
Suite 1400
Tacoma, WA 98402

OWNED BY



**HEALTHCARE
REALTY**

LEASING BY

**km Kidder
Mathews**

This information supplied herein is from sources we deem reliable. It is provided without any representation, warranty, or guarantee, expressed or implied as to its accuracy. Prospective Buyer or Tenant should conduct an independent investigation and verification of all matters deemed to be material, including, but not limited to, statements of income and expenses. Consult your attorney, accountant, or other professional advisor.