

TOK

COMMERCIAL

SELTICE MEDICAL BUILDING

CLASS A RETAIL SPACE FOR LEASE / 3330 GRANDMILL LN COEUR D'ALENE 83814



RATE REDUCED!
CLASS A+ YOGA/FITNESS
OPPORTUNITY

CONTACT

DON CRAWFORD

208.660.1207

don@tokcommercial.com

BRENNEN CRAWFORD

208.755.0920

brennen@tokcommercial.com

HIGHLIGHTS

Class A lease space.

Currently set up for athletic facility.

Potential uses include, yoga studio, gym, pilates, etc.

50+ high-end townhomes under construction across the way.

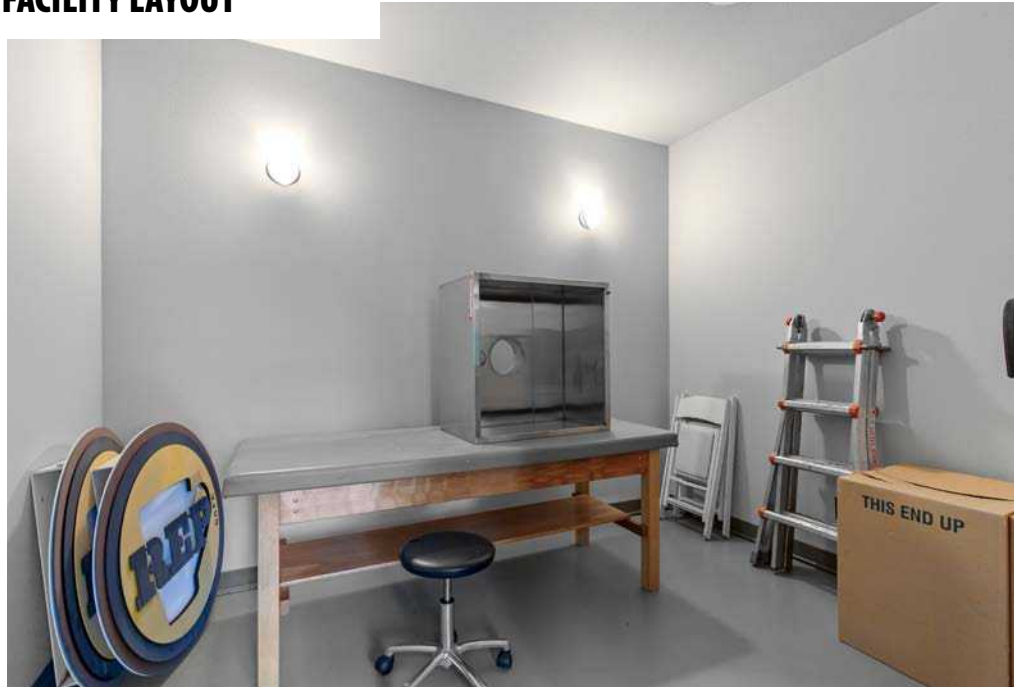
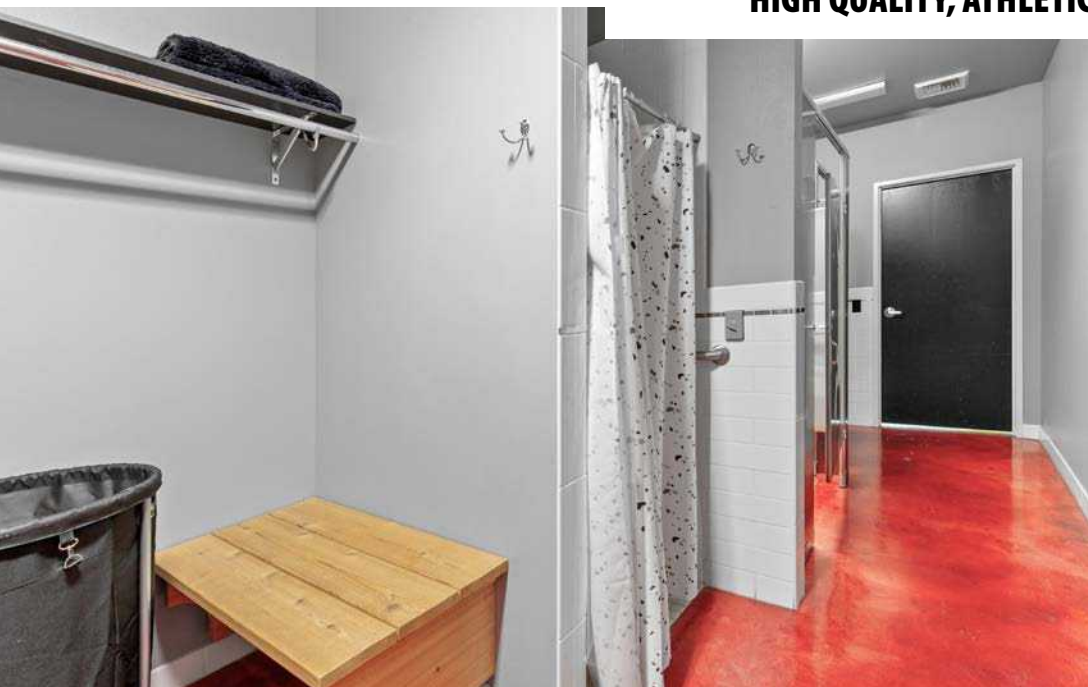
High-end retail business adjacent to the available lease space.

DETAILS

AVAILABLE SPACE:	Suite 2
SPACE SIZE:	1,686 SF
LEASE RATE:	\$2,670/Month
CAMs:	\$400/Month
LEASE TYPE:	Modified Gross
ZONING:	CDA-C-17
AVAILABLE:	Immediately



HIGH QUALITY, ATHLETIC FACILITY LAYOUT



PREMIER YOGA/FITNESS LOCATION



14,586 VPD

SELTICE WAY



SPOKANE RIVER

GRANDMILL LN

SELTICE MEDICAL BUILDING

CONVENIENTLY LOCATED ALONG GROWING SELTICE CORRIDOR

LESS THAN 1 MILE TO I-90
3.5 MILES TO DOWNTOWN



SELTICE MEDICAL BUILDING

