

BUSINESS PARK SPACE AVAILABLE
ADJACENT TO PAINE FIELD AIRPORT

PAINE FIELD

BUSINESS PARK

2615 WEST CASINO ROAD
EVERETT, WASHINGTON 98204



BRODERICK
• GROUP •

CONNOR GILCHRIST
425.274.4286
gilchrist@broderickgroup.com

RAWLEY HOLMBERG
425.274.4284
holmberg@broderickgroup.com

SAMSON TORO
425.274.4289
toro@broderickgroup.com

OWNED AND MANAGED BY:


Schnitzer
PROPERTIES

PAINE FIELD

BUSINESS PARK

2615 WEST CASINO ROAD
EVERETT, WASHINGTON 98204

PROPERTY FEATURES

- High profile space catering to service companies, small businesses, sales & distribution centers
- Grade level loading
- Warehouse ceiling height: 13' to bottom of joists – 15' to bottom of roof
- Convenient South Everett location
- Across the street from Boeing 777 & 787 plant
- Direct access to SR-526 & I-5
- Restaurants and shopping center nearby



SUITE	TOTAL SF	OFFICE SF	WAREHOUSE SF	AVAILABILITY	BASE RENT	NNN	GROSS RENT
<u>2E</u>	1,824 RSF	503 RSF	1,321 RSF	6/1/2026	\$2,554	\$680	\$3,234
<u>3AB</u>	2,245 RSF	452 RSF	1,793 RSF	NOW	\$3,143	\$837	\$3,980
<u>5A</u>	1,961 RSF	581 RSF	1,380 RSF	6/1/2026	\$2,745	\$726	\$3,471
<u>6F</u>	1,614 RSF	520 RSF	1,094 RSF	30 DAYS' NOTICE	\$2,260	\$662	\$2,922



CONNOR GILCHRIST
425.274.4286
gilchrist@broderickgroup.com

RAWLEY HOLMBERG
425.274.4284
holmberg@broderickgroup.com

SAMSON TORO
425.274.4289
toro@broderickgroup.com

OWNED AND MANAGED BY:



PAINE FIELD

BUSINESS PARK

2615 WEST CASINO ROAD
EVERETT, WASHINGTON 98204

SUITE 2E

AVAILABLE 6/1/2026

TOTAL SF: 1,824 RSF

OFFICE SF: 503 RSF

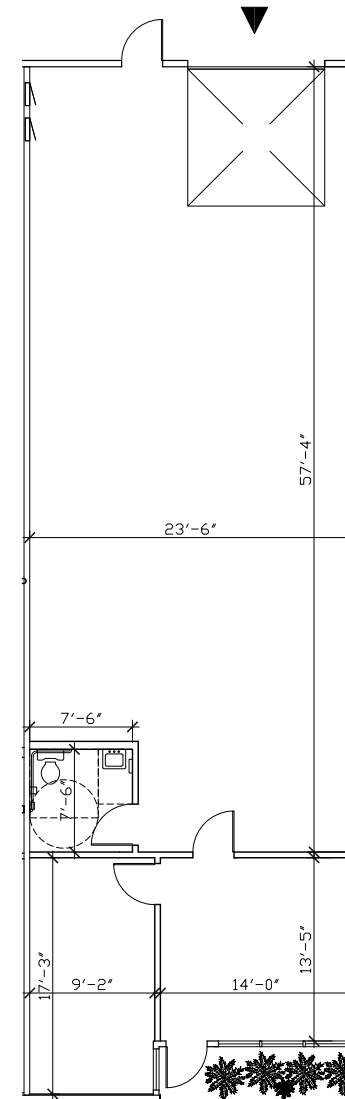
WAREHOUSE SF: 1,321 RSF

BASE RENT: \$2,554

NNN: \$680

GROSS RENT: \$3,234

The information contained herein has been given to us by the owner or sources that we deem reliable. We have no reason to doubt its accuracy, but we do not guarantee it. Prospective tenants should carefully verify all information contained herein.



[↑ BACK TO AVAILABLE SPACE](#)



CONNOR GILCHRIST
425.274.4286
gilchrist@broderickgroup.com

RAWLEY HOLMBERG
425.274.4284
holmberg@broderickgroup.com

SAMSON TORO
425.274.4289
toro@broderickgroup.com

OWNED AND MANAGED BY:



PAINE FIELD

BUSINESS PARK

2615 WEST CASINO ROAD
EVERETT, WASHINGTON 98204

SUITE 3 AB

AVAILABLE NOW

TOTAL SF: 2,245 RSF

OFFICE SF: 452 RSF

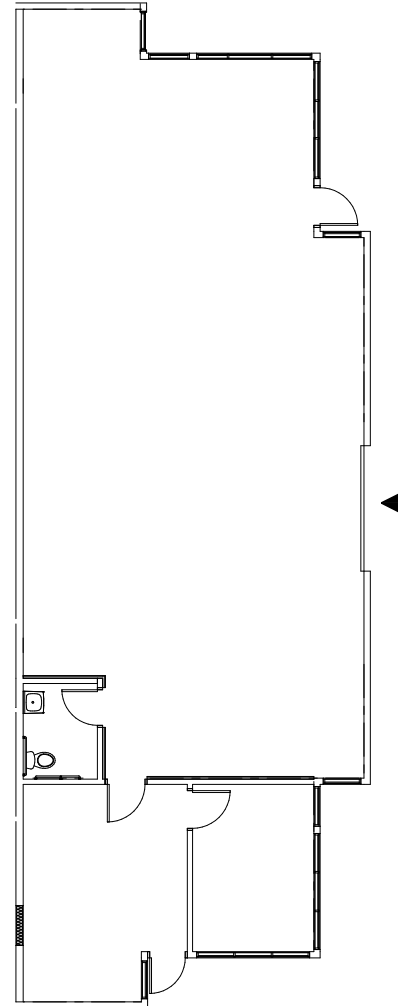
WAREHOUSE SF: 1,793 RSF

BASE RENT: \$3,143

NNN: \$837

GROSS RENT: \$3,980

The information contained herein has been given to us by the owner or sources that we deem reliable. We have no reason to doubt its accuracy, but we do not guarantee it. Prospective tenants should carefully verify all information contained herein.



↑ BACK TO AVAILABLE SPACE



CONNOR GILCHRIST
425.274.4286
gilchrist@broderickgroup.com

RAWLEY HOLMBERG
425.274.4284
holmberg@broderickgroup.com

SAMSON TORO
425.274.4289
toro@broderickgroup.com

OWNED AND MANAGED BY:



PAINE FIELD

BUSINESS PARK

2615 WEST CASINO ROAD
EVERETT, WASHINGTON 98204

SUITE 5A

AVAILABLE 6/1/2026

TOTAL SF: 1,961 RSF

OFFICE SF: 581 RSF

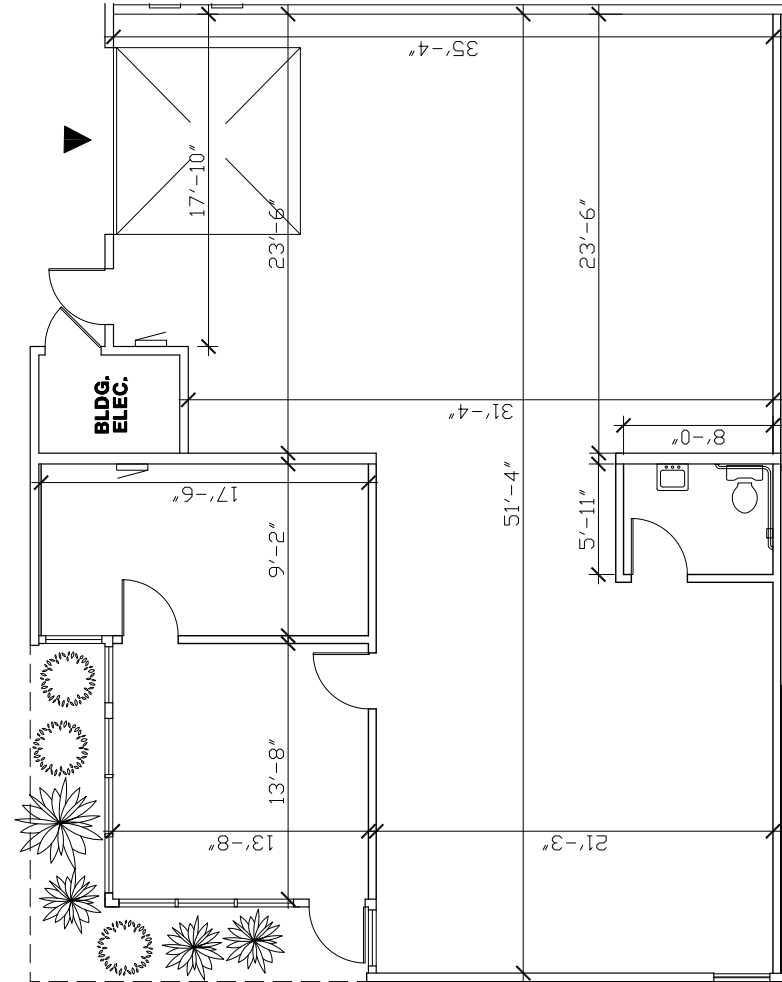
WAREHOUSE SF: 1,380 RSF

BASE RENT: \$2,745

NNN: \$726

GROSS RENT: \$3,471

The information contained herein has been given to us by the owner or sources that we deem reliable. We have no reason to doubt its accuracy, but we do not guarantee it. Prospective tenants should carefully verify all information contained herein.



↑ BACK TO AVAILABLE SPACE



CONNOR GILCHRIST
425.274.4286
gilchrist@broderickgroup.com

RAWLEY HOLMBERG
425.274.4284
holmberg@broderickgroup.com

SAMSON TORO
425.274.4289
toro@broderickgroup.com

OWNED AND MANAGED BY:



PAINE FIELD

BUSINESS PARK

2615 WEST CASINO ROAD
EVERETT, WASHINGTON 98204

SUITE 6F

AVAILABLE WITH 30 DAYS' NOTICE

TOTAL SF: 1,614 RSF

OFFICE SF: 520 RSF

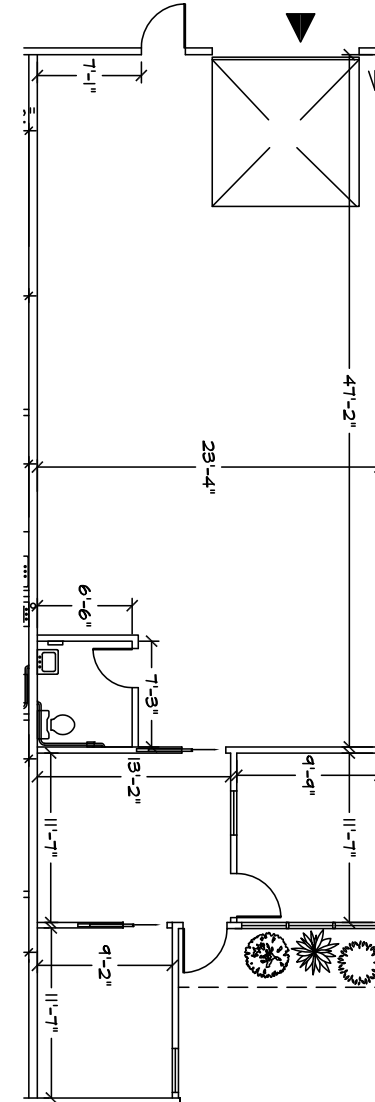
WAREHOUSE SF: 1,094 RSF

BASE RENT: \$2,260

NNN: \$662

GROSS RENT: \$2,922

The information contained herein has been given to us by the owner or sources that we deem reliable. We have no reason to doubt its accuracy, but we do not guarantee it. Prospective tenants should carefully verify all information contained herein.



[↑ BACK TO AVAILABLE SPACE](#)



CONNOR GILCHRIST
425.274.4286
gilchrist@broderickgroup.com

RAWLEY HOLMBERG
425.274.4284
holmberg@broderickgroup.com

SAMSON TORO
425.274.4289
toro@broderickgroup.com

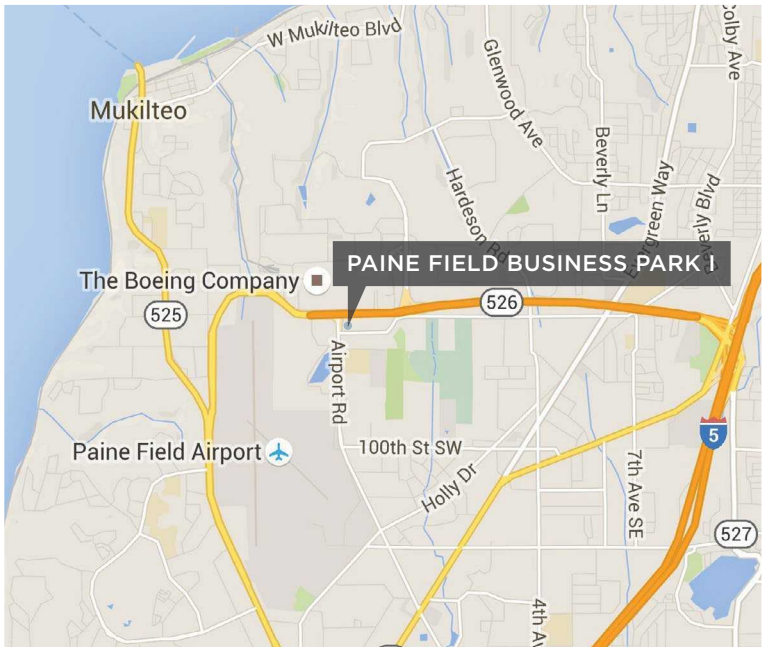
OWNED AND MANAGED BY:



PAINE FIELD

BUSINESS PARK

2615 WEST CASINO ROAD
EVERETT, WASHINGTON 98204



BRODERICK
GROUP

CONNOR GILCHRIST
425.274.4286
gilchrist@broderickgroup.com

RAWLEY HOLMBERG
425.274.4284
holmberg@broderickgroup.com

SAMSON TORO
425.274.4289
toro@broderickgroup.com

OWNED AND MANAGED BY:


Schnitzer
PROPERTIES

PAINE FIELD

BUSINESS PARK

2615 WEST CASINO ROAD
EVERETT, WASHINGTON 98204

PUGET SOUND

PAINE FIELD BUSINESS PARK I



- | | | | | | |
|------------------------------|-----------------------------|-------------------------|-------------------------------------|----------------------------|--------------------------|
| 1 Happy Tummy Grill | 7 IHOP | 13 Panera Bread | 19 UPS | 25 Michaels | 31 Taco Bell |
| 2 Goodwill | 8 FedEx | 14 Starbucks | 20 Arby's | 26 Walmart | 32 Memo's Mexican |
| 3 USPS | 9 Outback Steakhouse | 15 Target | 21 T.J. Maxx | 27 Everett Mall | 33 Popeye's |
| 4 Fred Meyer | 10 Office Depot | 16 V Star Buffet | 22 Best Buy | 28 LA Fitness | 34 Walgreens |
| 5 Public Storage | 11 BECU | 17 Trader Joe's | 23 Petco | 29 Wells Fargo Bank | 35 Albertson's |
| 6 Buzz Inn Steakhouse | 12 McDonald's | 18 Applebee's | 24 Kyoto Japanese Steakhouse | 30 Ross | 36 Dairy Queen |

BRODERICK
GROUP

CONNOR GILCHRIST
425.274.4286
gilchrist@broderickgroup.com

RAWLEY HOLMBERG
425.274.4284
holmberg@broderickgroup.com

SAMSON TORO
425.274.4289
toro@broderickgroup.com

OWNED AND MANAGED BY:

Schnitzer
PROPERTIES