

# PORTSIDE INDUSTRIAL CENTER



6752 20th Street E, Fife, WA 98424

## FOR LEASE

### 17,173 SF & 37,827 SF

(Can be combined)

*Building E is one of six buildings in the logistics park located on 28 acres in Fife within five minutes from the Port of Tacoma.*

- 55,000 SF Total Available
- 30' Clear
- Convenient access to I-5, SR 167, and Hwy-99
- Divisible to:
  - 17,173 SF
  - 2,100 SF Office
  - 2 Dock-high doors
  - 1 Grade-level door
  - Available now
  - 37,827 SF
  - 2,295 SF Office
  - 12 Dock-high doors
  - 1 Grade-level door
  - Available 10/1/2027



**MATT WOOD, SIOR**

+1 206 595 6814

matt.wood@kbcadvisors.com

**MICHAEL ROY**

+1 206 940 7199

michael.roy@kbcadvisors.com

Co-brokered by



**TODD CLARKE**

+1 253 722 1422

todd.clarke@kidder.com

**TY CLARKE**

+1 253 722 1419

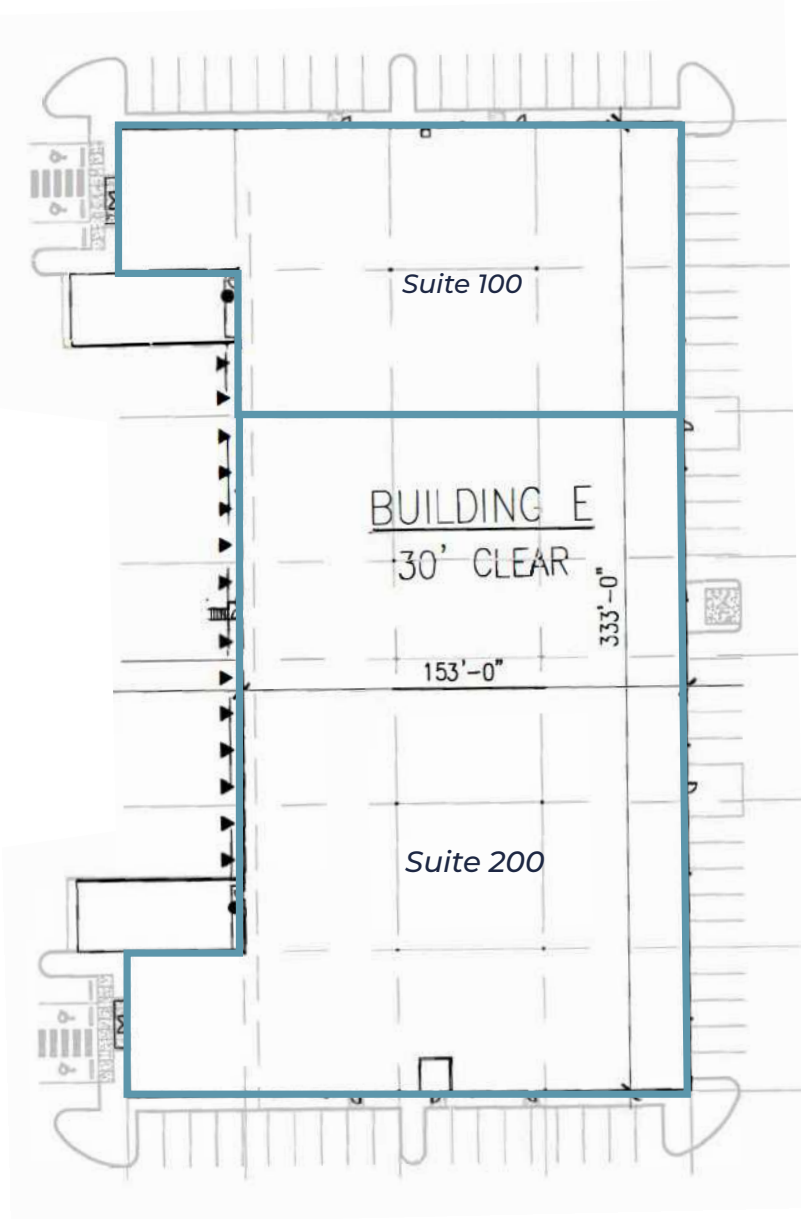
ty.clarke@kidder.com

Owned by

**LBA**Logistics

# PORTSIDE INDUSTRIAL CENTER - BUILDING E

6752 20TH STREET E, FIFE, WA 98424

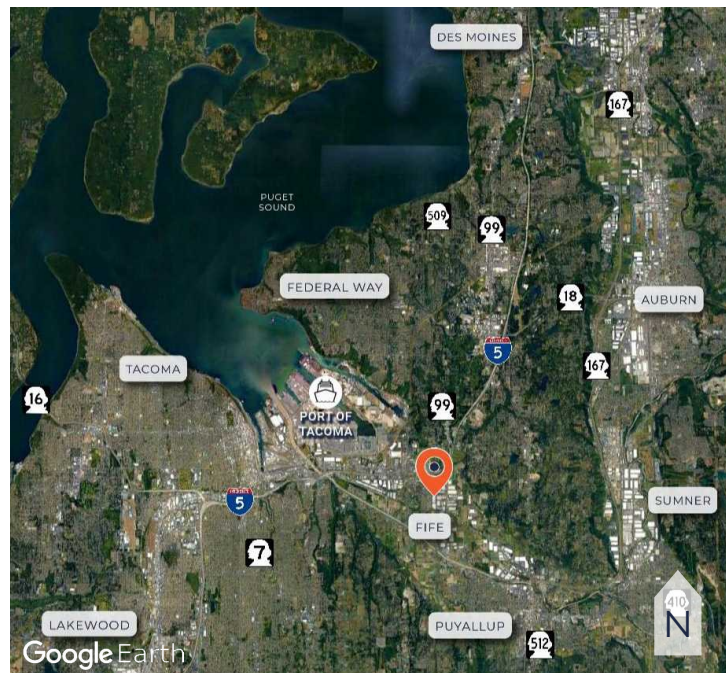


## Suite 100

<b>Total SF</b>	17,173 SF
<b>Office SF</b>	2,100 SF
<b>Loading Doors</b>	2 Dock-high 1 Grade-level
<b>Available</b>	Now

## Suite 200

<b>Total SF</b>	37,827 SF
<b>Office SF</b>	2,295 SF
<b>Loading Doors</b>	12 Dock-high 1 Grade-level
<b>Available</b>	October 1, 2026



Owned by

**LBA**Logistics 

**MATT WOOD, SIOR**  
+1 206 595 6814  
matt.wood@kbcadvisors.com

**MICHAEL ROY**  
+1 206 940 7199  
michael.roy@kbcadvisors.com



Co-brokered by

**TODD CLARKE**  
+1 253 722 1422  
todd.clarke@kidder.com

**TY CLARKE**  
+1 253 722 1419  
ty.clarke@kidder.com

