

PORTSIDE INDUSTRIAL CENTER



6752 20th Street E, Fife, WA 98424

FOR LEASE

17,173 SF & 37,827 SF

(Can be combined)

Building E is one of six buildings in the logistics park located on 28 acres in Fife within five minutes from the Port of Tacoma.

- 55,000 SF Total Available
- 30' Clear
- Convenient access to I-5, SR 167, and Hwy-99
- Divisible to:
 - 17,173 SF
 - 2,100 SF Office
 - 2 Dock-high doors
 - 1 Grade-level door
 - Available now
 - 37,827 SF
 - 2,295 SF Office
 - 12 Dock-high doors
 - 1 Grade-level door
 - Available 10/1/2027



MATT WOOD, SIOR

+1 206 595 6814

matt.wood@kbcadvisors.com

MICHAEL ROY

+1 206 940 7199

michael.roy@kbcadvisors.com

Co-brokered by



TODD CLARKE

+1 253 722 1422

todd.clarke@kidder.com

TY CLARKE

+1 253 722 1419

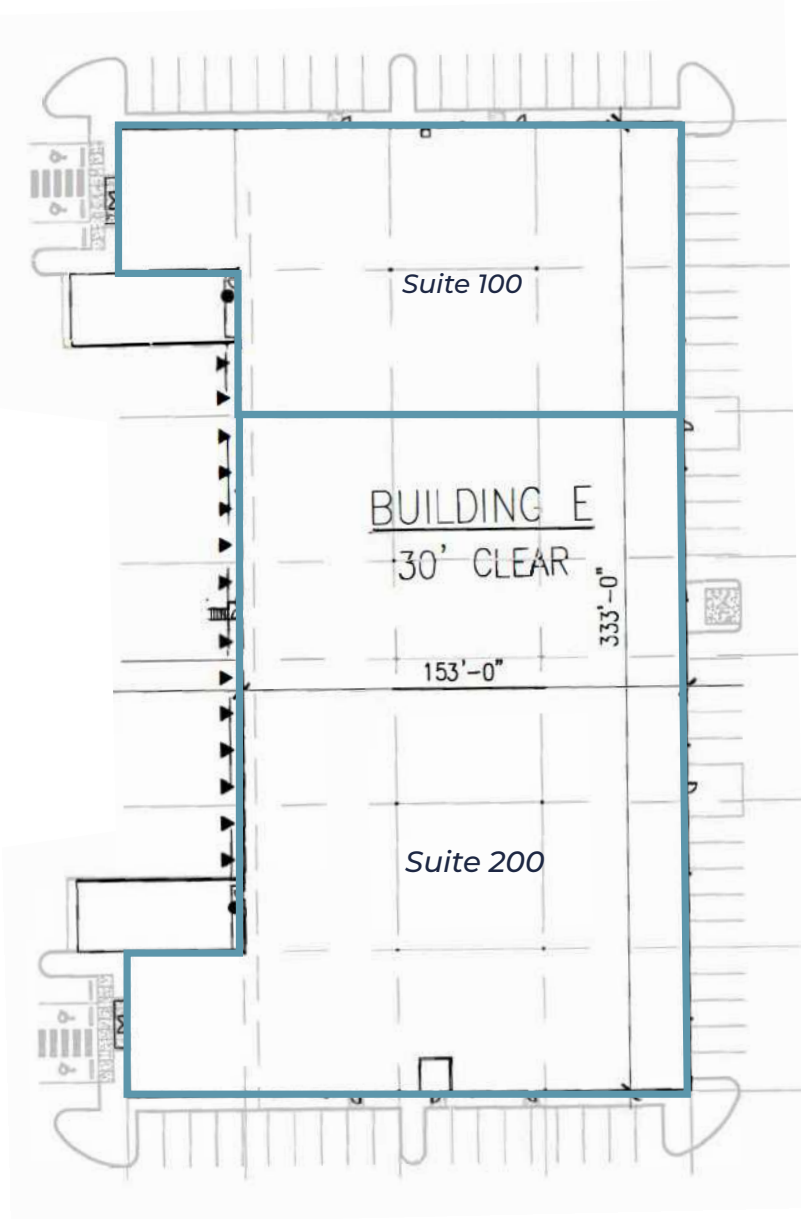
ty.clarke@kidder.com

Owned by

LBALogistics

PORTSIDE INDUSTRIAL CENTER - BUILDING E

6752 20TH STREET E, FIFE, WA 98424

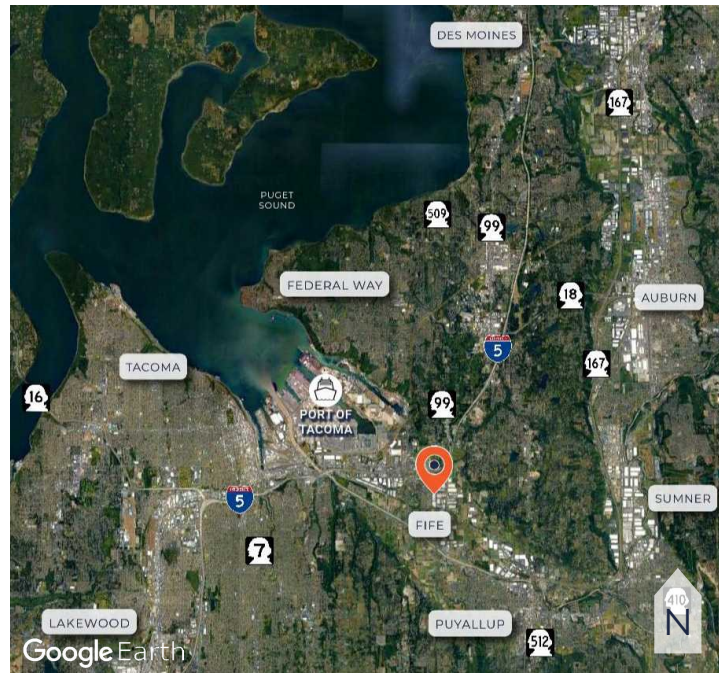


Suite 100

Total SF	17,173 SF
Office SF	2,100 SF
Loading Doors	2 Dock-high 1 Grade-level
Available	Now

Suite 200

Total SF	37,827 SF
Office SF	2,295 SF
Loading Doors	12 Dock-high 1 Grade-level
Available	October 1, 2026



Owned by

LBALogistics 

MATT WOOD, SIOR
+1 206 595 6814
matt.wood@kbcadvisors.com

MICHAEL ROY
+1 206 940 7199
michael.roy@kbcadvisors.com



Co-brokered by

TODD CLARKE
+1 253 722 1422
todd.clarke@kidder.com

TY CLARKE
+1 253 722 1419
ty.clarke@kidder.com

