



## Mountlake Terrace Professional Building

6405 218th St SW, Mountlake Terrace, WA 98043

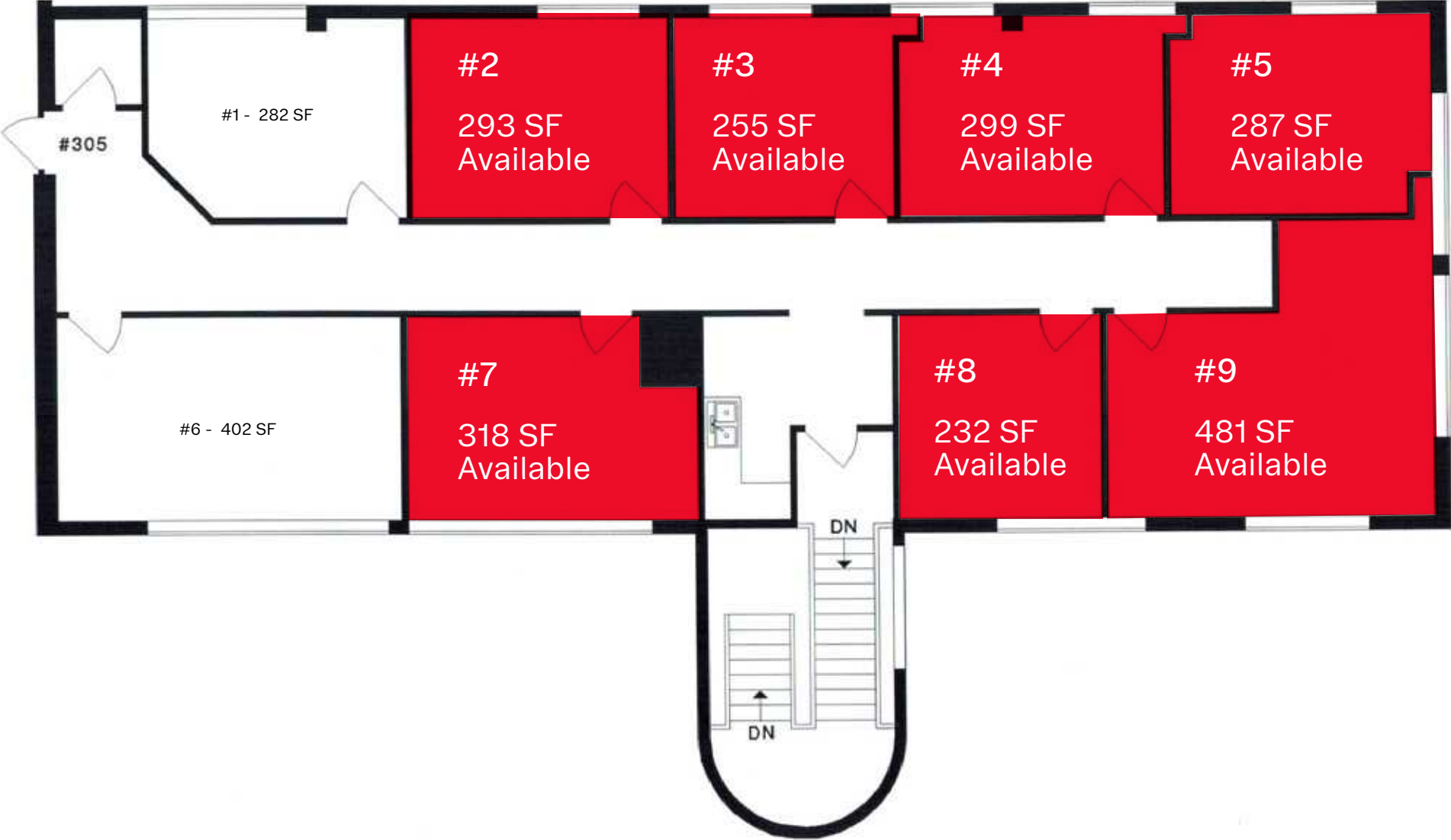
Medical and Professional Offices  
Available For Lease

## Highlights:

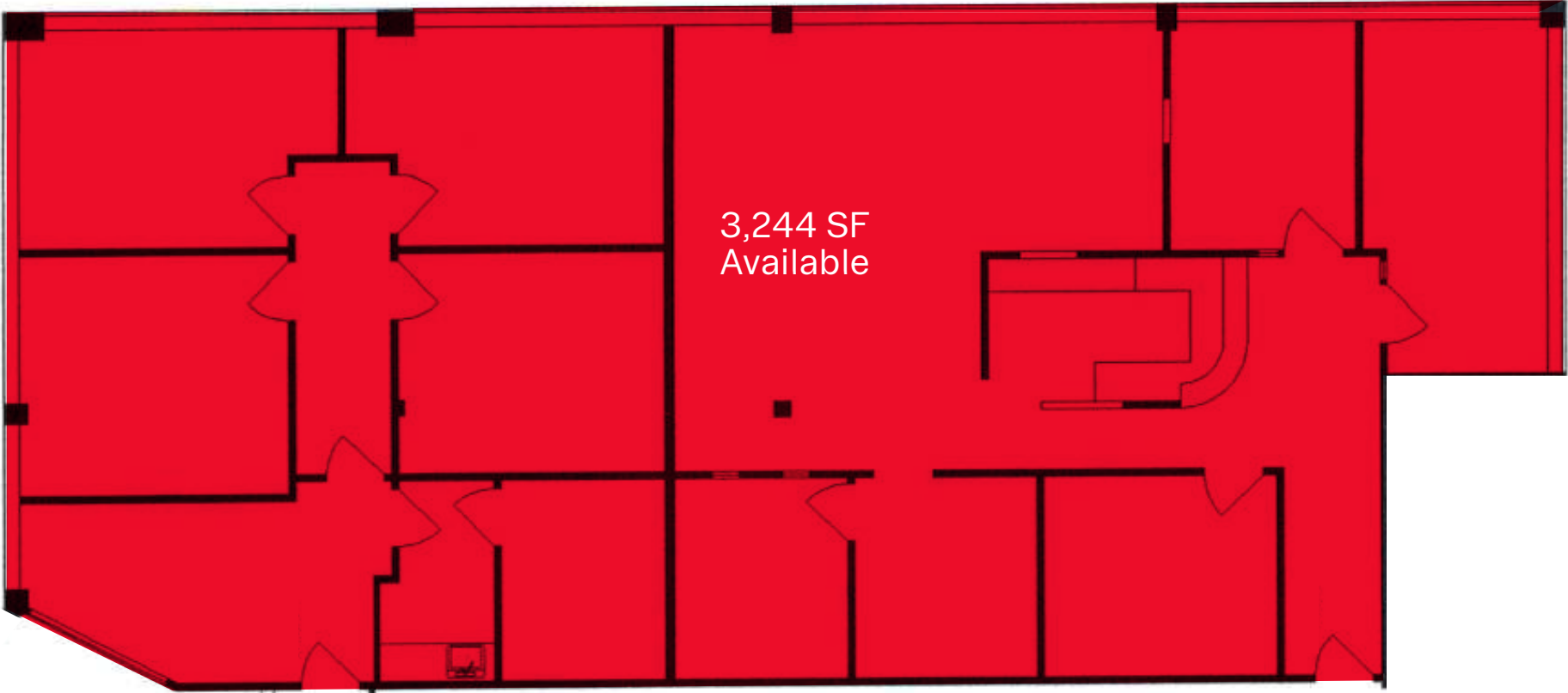
- Class A - Medical/Dental/ Professional Office
- 2nd Gen Office Spaces
- Great central location
- Close proximity to Edmonds, Lynnwood, and Shoreline
- Close to I-5
- Ample free parking



305 Available Suites:



Suite 301 - 3,244 SF Available:

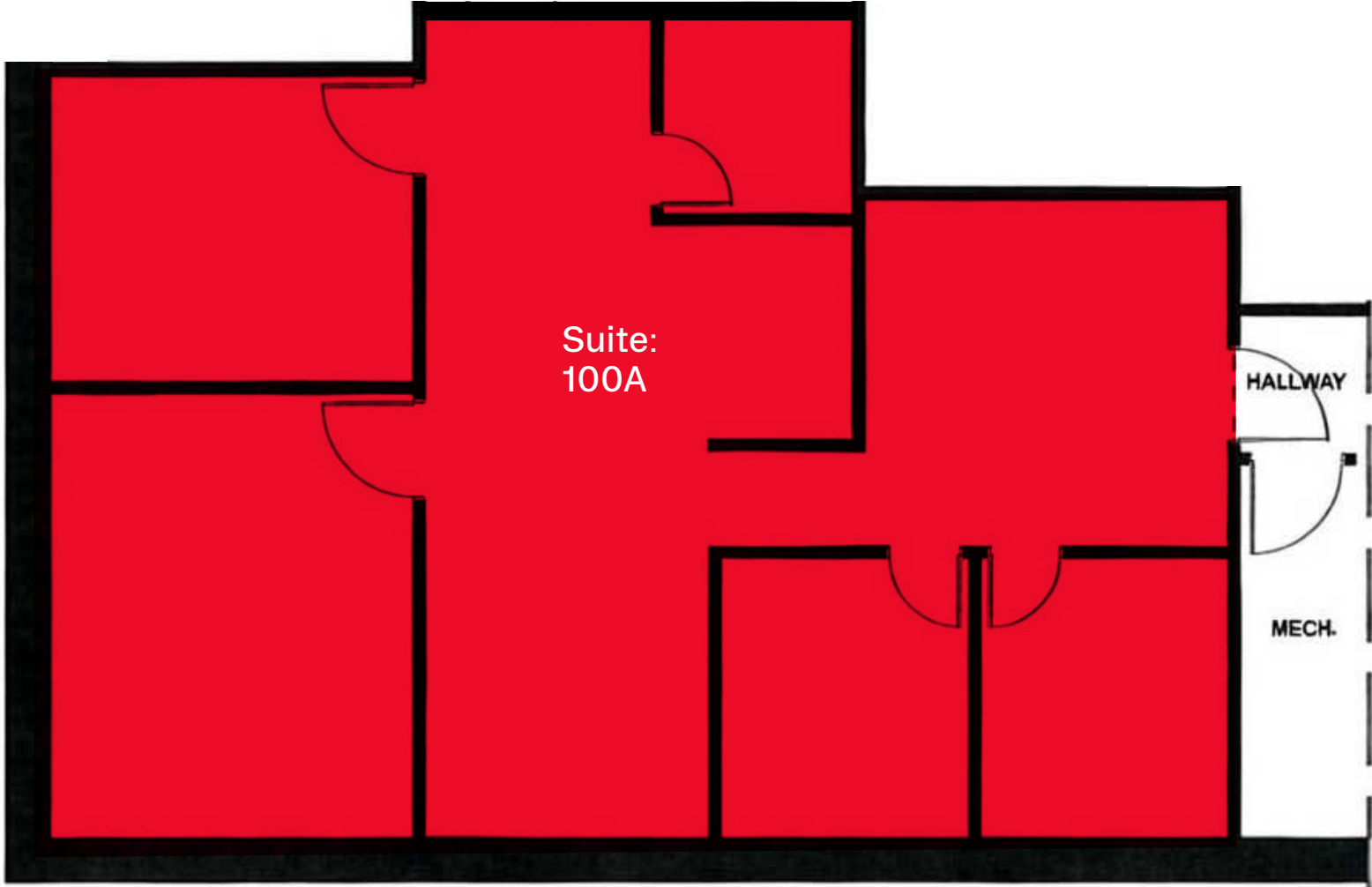


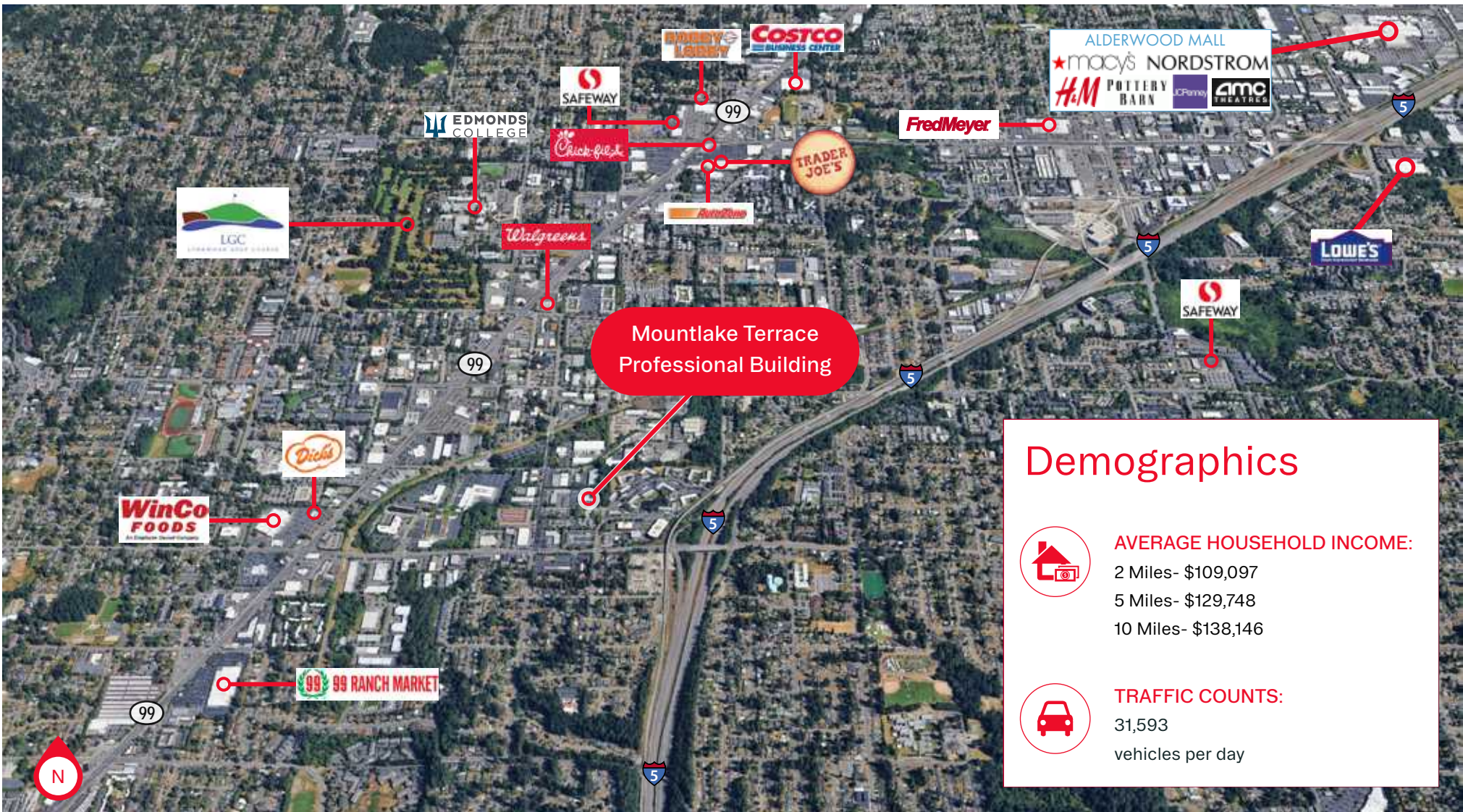
## Suite 105 - Garage Storage (1,404 SF) Available:

- Two garage doors
- 12' clearance height
- Great for auto storage



Suite 100A - 1,157 SF Available:





## Demographics

**AVERAGE HOUSEHOLD INCOME:**

- 2 Miles- \$109,097
- 5 Miles- \$129,748
- 10 Miles- \$138,146

**TRAFFIC COUNTS:**

- 31,593
- vehicles per day

**Mountlake Terrace Professional Building - 6405 218th St SW, Mountlake Terrace, WA 98043**

**Tyler Barnes**  
 tylerb@wcccommercialrealty.com  
 425 406 0808

**WCCR** | West Coast Commercial Realty

DISCLAIMER: The above information has been secured from sources believed to be reliable, however, no representations are made to its accuracy. Prospective tenants or buyers should consult their professional advisors and conduct their own independent investigation. Site plan and configuration are subject to change. Properties are subject to change in price and/or availability without notice. West Coast Commercial Realty, LLC