



For Lease | South Lake Center D

10519 20th St SE, Lake Stevens, WA

Rare retail or office/warehouse space in the heart of Lake Stevens' Commercial District.

PROPERTY HIGHLIGHTS

- + Suites Available: B3, 5, 6
- + Rare retail and office/warehouse space
- + Proximity to major thoroughfares
- + Great access and visibility
- + Zoning: Commercial District
- + Leasehold Excise Tax: 12.84%
- + Water, sewer, landscaping included in NNNs



BLAKE STEDMAN
Senior Vice President
+1 425 586 5621
bstedman@nai-pp.com

RICHARD ZHOU
Associate
+1 425 586 5623
rzhou@nai-pp.com



THE INFORMATION CONTAINED HEREIN HAS BEEN GIVEN TO US BY THE OWNER OF THE PROPERTY OR OTHER SOURCES WE DEEM RELIABLE, WE HAVE NO REASON TO DOUBT ITS ACCURACY, BUT WE DO NOT GUARANTEE IT. ALL INFORMATION SHOULD BE VERIFIED PRIOR TO PURCHASE OR LEASE.

nai-pp.com

Availability



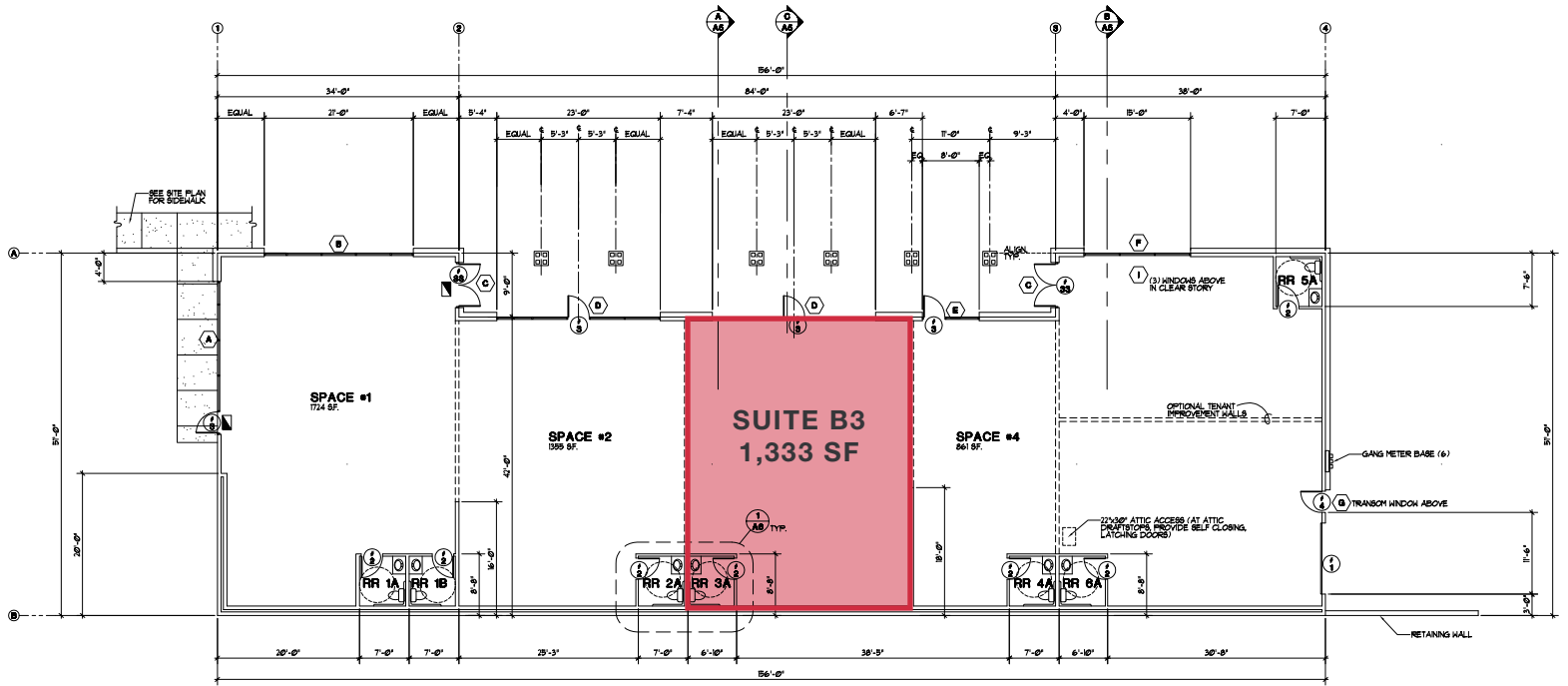
SUITE	#B3	#5	#6
TOTAL SF	1,333 SF	887 SF	1,040 SF + Add'l Mezz
FEATURES	Retail or Office	Retail or Office	Warehouse roll-up loading door
ASKING RATE (\$/SF/YR)	\$35.00 NNN + LET	\$35.00 NNN + LET	\$23.00 NNN + LET
NOTES	Available Now	Can be combined with Suite 6	Can be combined with Suite 5

BLAKE STEDMAN
Senior Vice President
+1 425 586 5621
bstedman@nai-pp.com

RICHARD ZHOU
Associate
+1 425 586 5623
rzhou@nai-pp.com



Suite B3

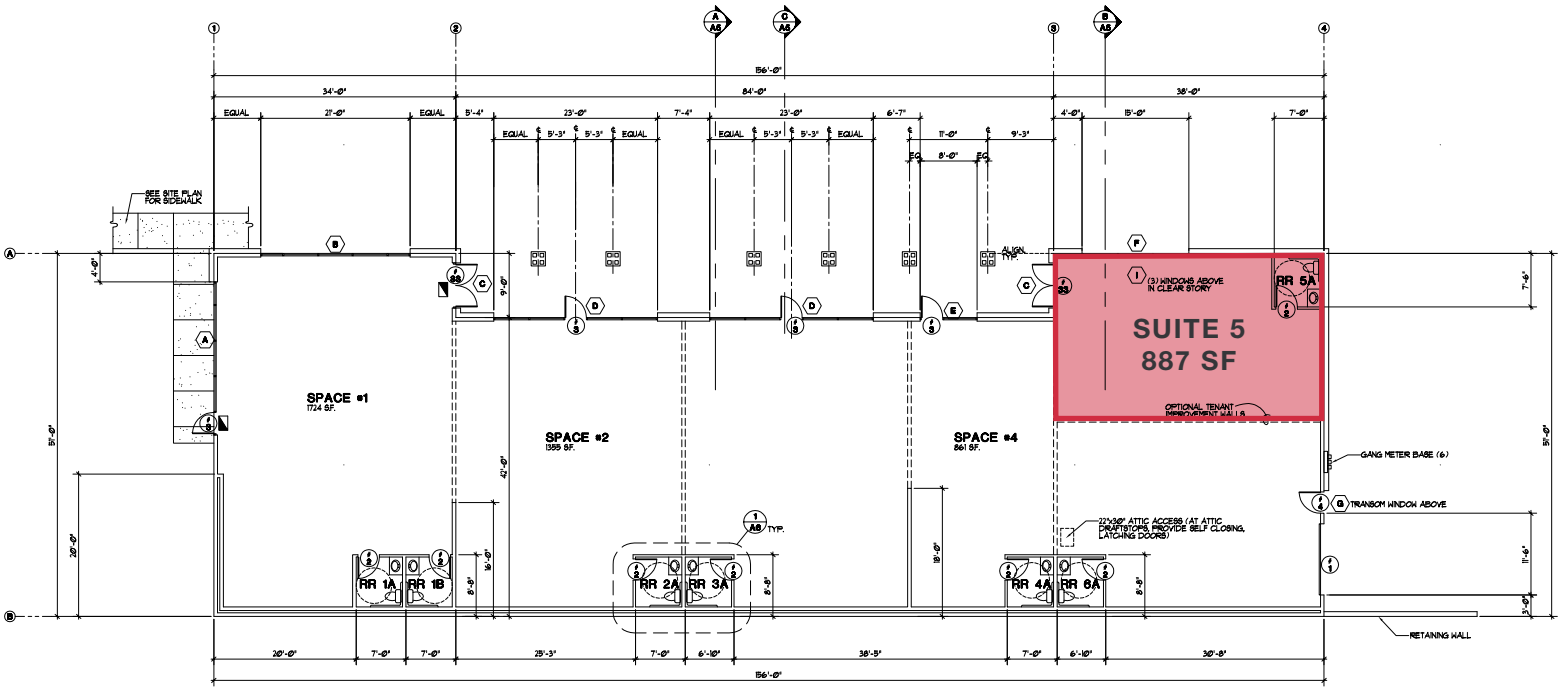


BLAKE STEDMAN
Senior Vice President
+1 425 586 5621
bstedman@nai-psp.com

RICHARD ZHOU
Associate
+1 425 586 5623
rzhou@nai-psp.com



Suite 5

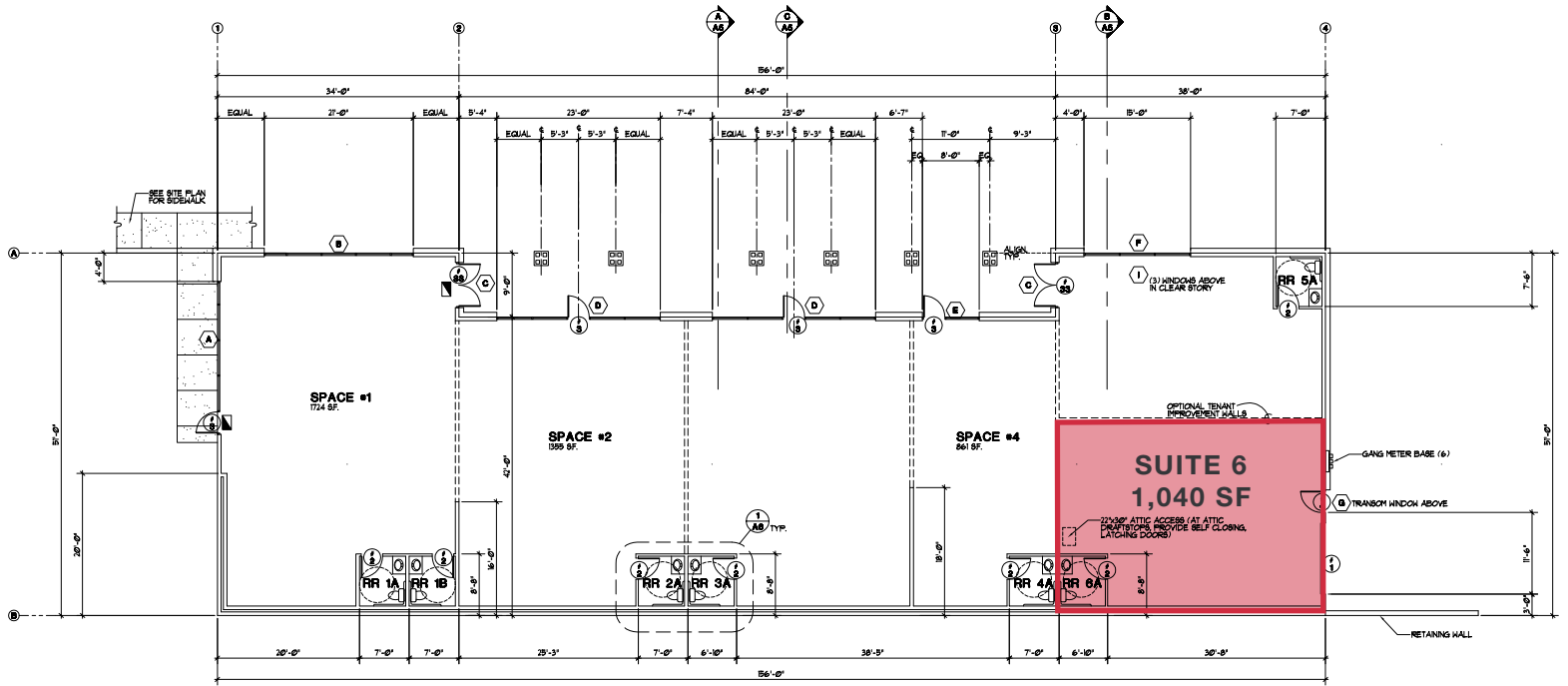


BLAKE STEDMAN
 Senior Vice President
 +1 425 586 5621
 bstedman@nai-psp.com

RICHARD ZHOU
 Associate
 +1 425 586 5623
 rzhou@nai-psp.com



Suite 6



BLAKE STEDMAN
Senior Vice President
+1 425 586 5621
bstedman@nai-psp.com

RICHARD ZHOU
Associate
+1 425 586 5623
rzhou@nai-psp.com



Property Overview

South Lake Center was constructed in 2000 with 9,678 SF of retail and professional office space. Other tenants in the business park include South Lake Pizza, Japan Teriyaki & Roll, Subway, and South Lake Family Dentistry. Located just South of the Lake Stevens Police Department, this building benefits from the natural foot traffic and amenity needs of local employees and businesses.

LOCATION DESCRIPTION

Lake Stevens is a rapidly growing city approximately 34 miles north of Seattle. Lake Stevens' strategic location near State Route 9 and State Route 204 offers excellent connectivity to the Seattle metropolitan area and other major hubs in the Pacific Northwest. The city has experienced significant growth, with a population exceeding 31,000 in 2016 and projections estimating a 40% increase by 2035. This expansion has spurred substantial business developments, including the opening of a 160,000-square-foot Costco store in December 2022, featuring a gas station with 30 pumps and 800 parking stalls. The demographics of Lake Stevens Located in a growing area with strong residential and commercial demand, offering 7.1% projected five-year population growth.

COUNTY OVERVIEW

Snohomish County, located in the heart of the Pacific Northwest, is one of Washington State's most dynamic and rapidly growing regions – with both rural and urban areas, as well as maritime and alpine climates. Its strengths lie in its diverse economic base, with manufacturing and research, strong manufacturing and industrial zones, and a high quality of life that attracts businesses and residents alike. Snohomish County's unique combination of economic strengths, cultural diversity, and natural attractions makes it a cornerstone of Washington State's development and a prime destination for both businesses and residents.

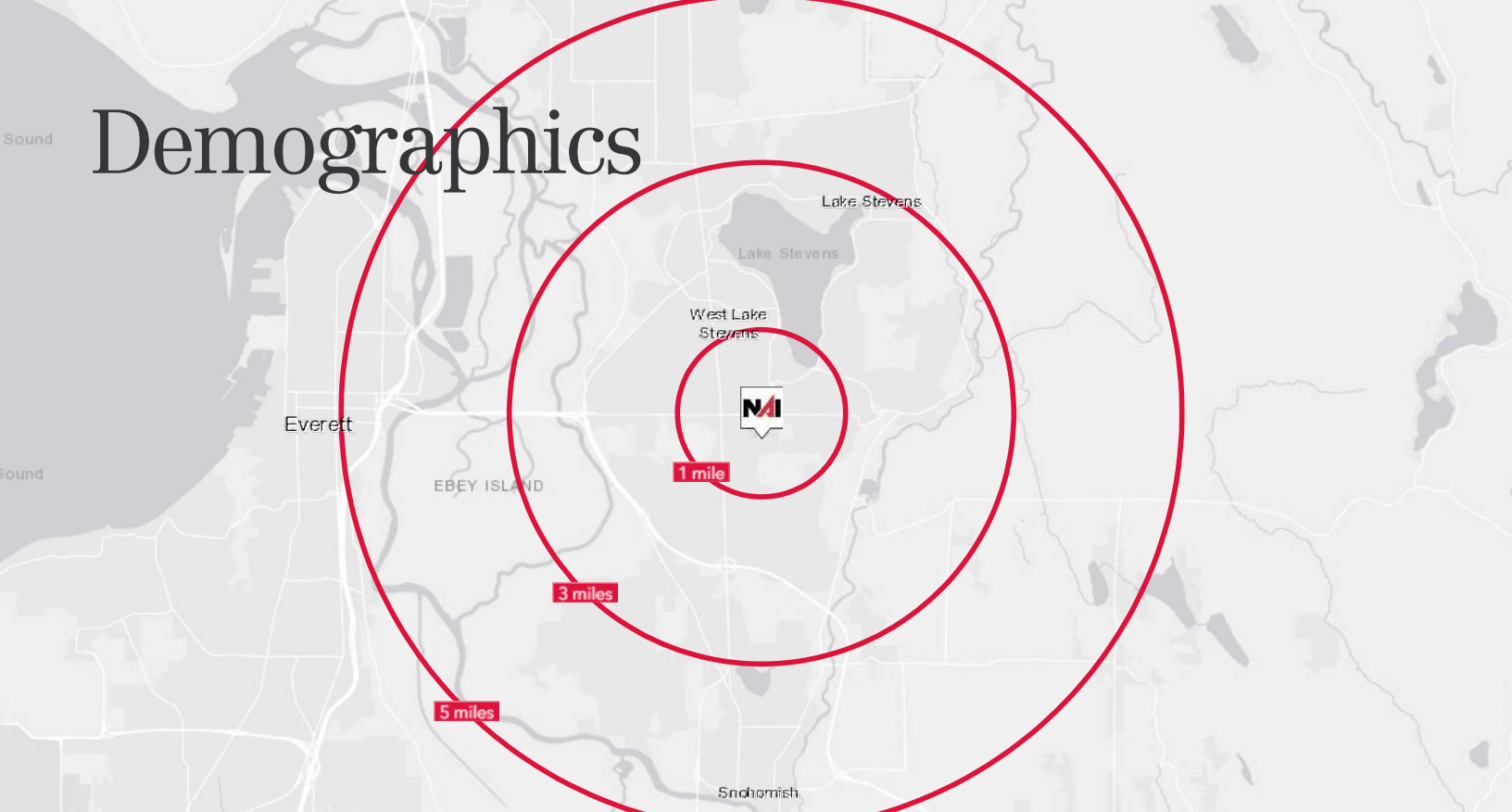


BLAKE STEDMAN
Senior Vice President
+1 425 586 5621
bstedman@nai-psp.com

RICHARD ZHOU
Associate
+1 425 586 5623
rzhou@nai-psp.com



Demographics



10519 20TH STREET SE

	1 MILE	3 MILES	5 MILES
Population	11,610	48,898	95,428
2029 Population	12,417	50,992	99,746
Households	3,942	16,773	33,823
Median Age	35.7	37.1	37.8
Median HH Income	\$115,968	\$116,212	\$111,754

BLAKE STEDMAN
Senior Vice President
+1 425 586 5621
bstedman@nai-pp.com

RICHARD ZHOU
Associate
+1 425 586 5623
rzhou@nai-pp.com

