

DES MOINES LOGISTICS CENTER

19240 DES MOINES MEMORIAL DRIVE SOUTH
SEATAC • WA 98148



6,777 SF SHELL WAREHOUSE
WITH 2,140 SF OFFICE

FOR LEASE

CBRE

FEATURES



6,777 SF Shell with
2,140 SF Office



24' Clear
Height



Fully
Sprinklered



Three Dock Doors
One Ramp Door



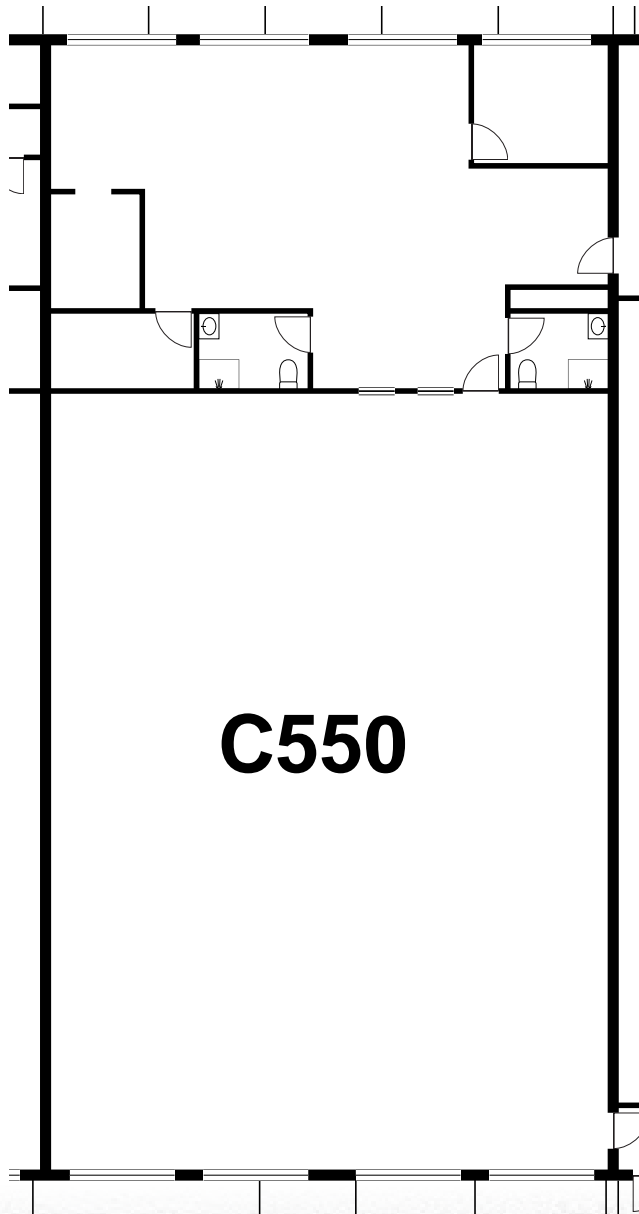
Convenient
freeway access



Available with
30 days' notice



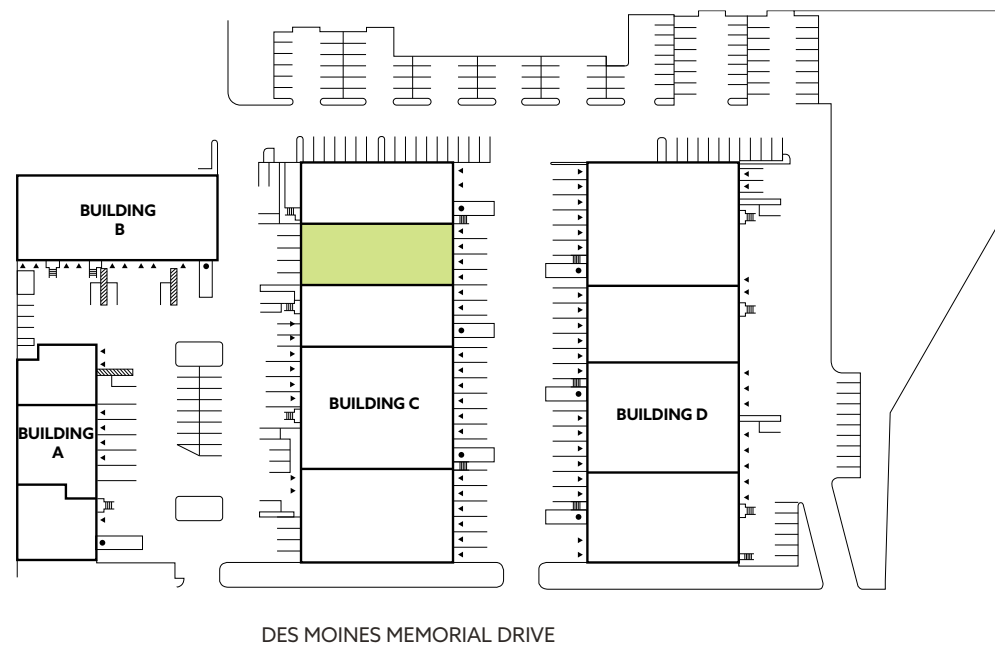
Call brokers
for rates



- GRADE LEVEL DOOR
- ▲ DOCK HIGH DOOR

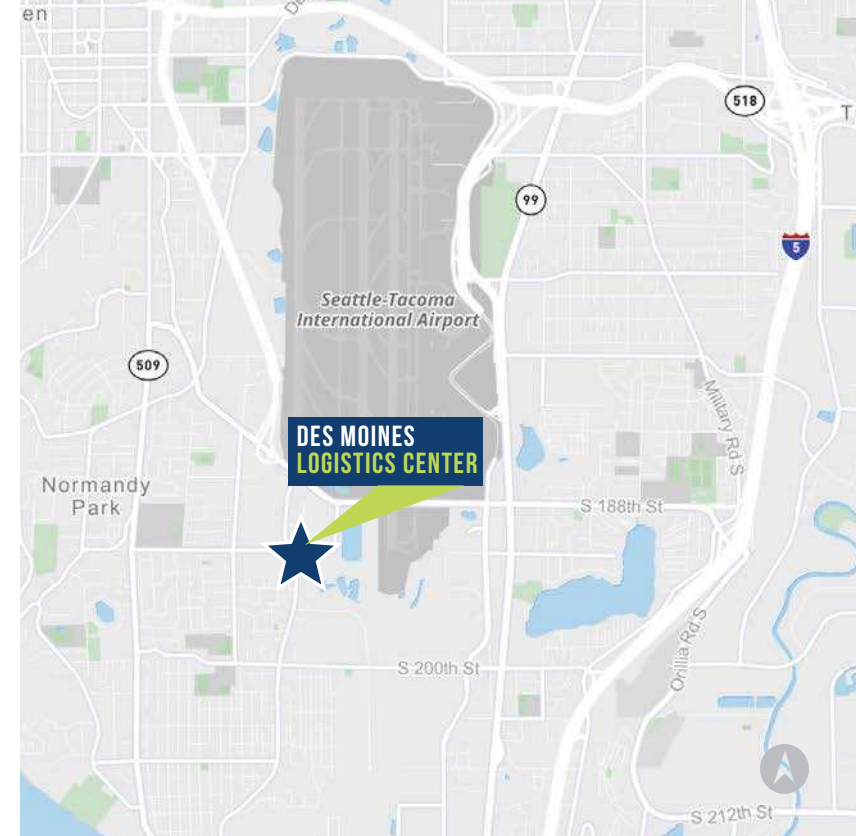
BUILDING C SUITE 550 WAREHOUSE SHELL AND OFFICE SPACE

SITE PLAN



DES MOINES LOGISTICS CENTER

19240 DES MOINES MEMORIAL DRIVE SOUTH
SEATAC • WA 98148



©2026 CBRE, Inc. All rights reserved. This information has been obtained from sources believed reliable but has not been verified for accuracy or completeness. CBRE, Inc. makes no guarantee, representation or warranty and accepts no responsibility or liability as to the accuracy, completeness, or reliability of the information contained herein. You should conduct a careful, independent investigation of the property and verify all information. Any reliance on this information is solely at your own risk. CBRE and the CBRE logo are service marks of CBRE, Inc. All other marks displayed on this document are the property of their respective owners, and the use of such marks does not imply any affiliation with or endorsement of CBRE.CH 2.24.26

CBRE

CONTACT US

ANDREW STARK

EXECUTIVE VICE PRESIDENT

+1 206 310 9044

ANDREW.STARK@CBRE.COM

ANDREW HITCHCOCK

EXECUTIVE VICE PRESIDENT

+1 206 790 2211

ANDREW.HITCHCOCK@CBRE.COM

ZAC SNEDEKER

SENIOR VICE PRESIDENT

+1 425 444 0133

ZAC.SNEDEKER@CBRE.COM