

For Sale & Lease  
**Industrial**

**NAI**Black



## 112 W Pacific Ave

Spokane, Washington 99201

### Property Highlights

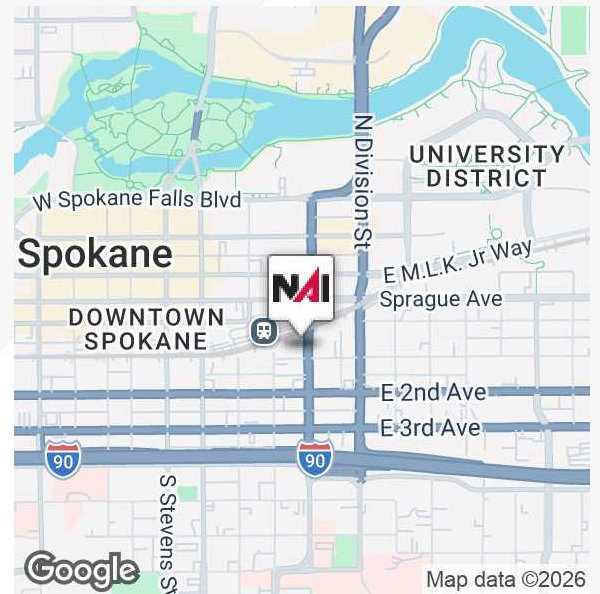
- Building Size: 21,225 SF ±
- General Commercial Zoning
- Three Floors
- Street Accessible Freight Door
- Storage Bays and Shelving Structures
- 10'-20' Ceiling Height

### Property Description

Centrally located in Spokane, this historic building is a 21,225 square foot warehouse property. Offers easy access to I-90, I-405 and SR-904. With nearly 20 storage bays and multiple shelving units.

**Sale Price: \$700,000**

**Lease Rate: \$6,500.00 per month (NNN)**



For more information

**Eric Weaver**

O: 360 631 1526

[eric.weaver@naiblack.com](mailto:eric.weaver@naiblack.com)

No warranty or representation, expression or implied, is made as to the accuracy of the information contained herein, and the same is submitted subject to errors, omissions, change or price, rental or other conditions, prior to sale, lease, financing, or withdrawal without notice, and of special listing conditions imposed by our principals no warranties or representations are made as to the condition of the property or any hazards contained therein or any to be implied.

801 W. Riverside Avenue, Suite 300  
Spokane, WA 99201  
509 623 1000 tel  
[naiblack.com](http://naiblack.com)

For Sale & Lease  
**Industrial**

**NAI**Black

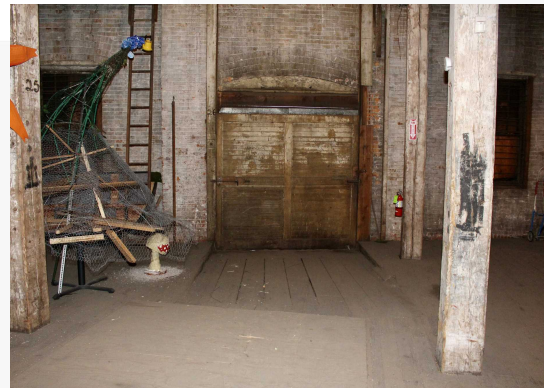
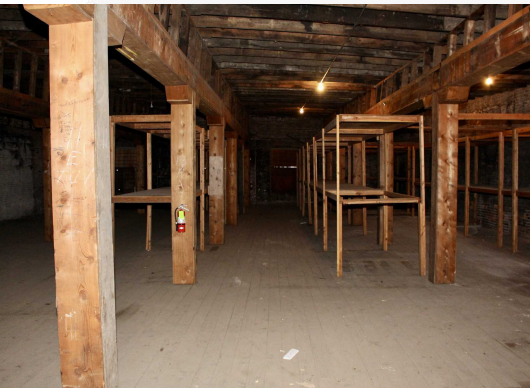
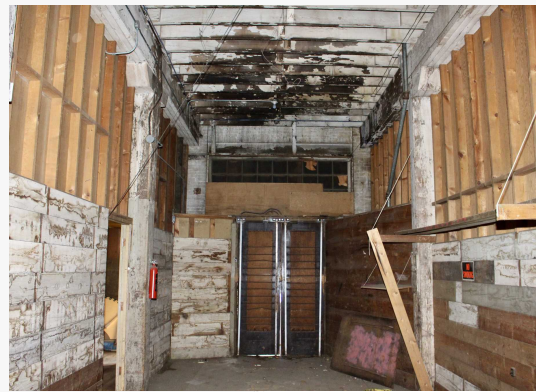
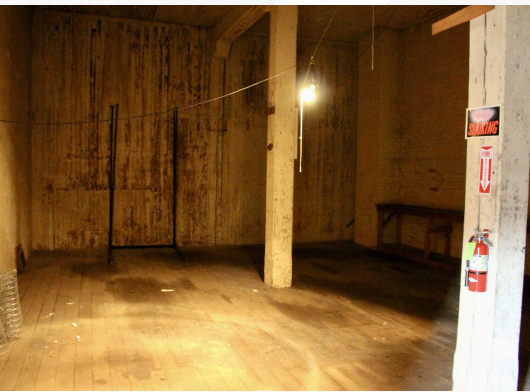


No warranty or representation, expression or implied, is made as to the accuracy of the information contained herein, and the same is submitted subject to errors, omissions, change or price, rental or other conditions, prior to sale, lease, financing, or withdrawal without notice, and of special listing conditions imposed by our principals no warranties or representations are made as to the condition of the property or any hazards contained therein or any to be implied.

801 W. Riverside Avenue, Suite 300  
Spokane, WA 99201  
509 623 1000 tel  
[naiblack.com](http://naiblack.com)

For Sale & Lease  
**Industrial**

**NAI**Black



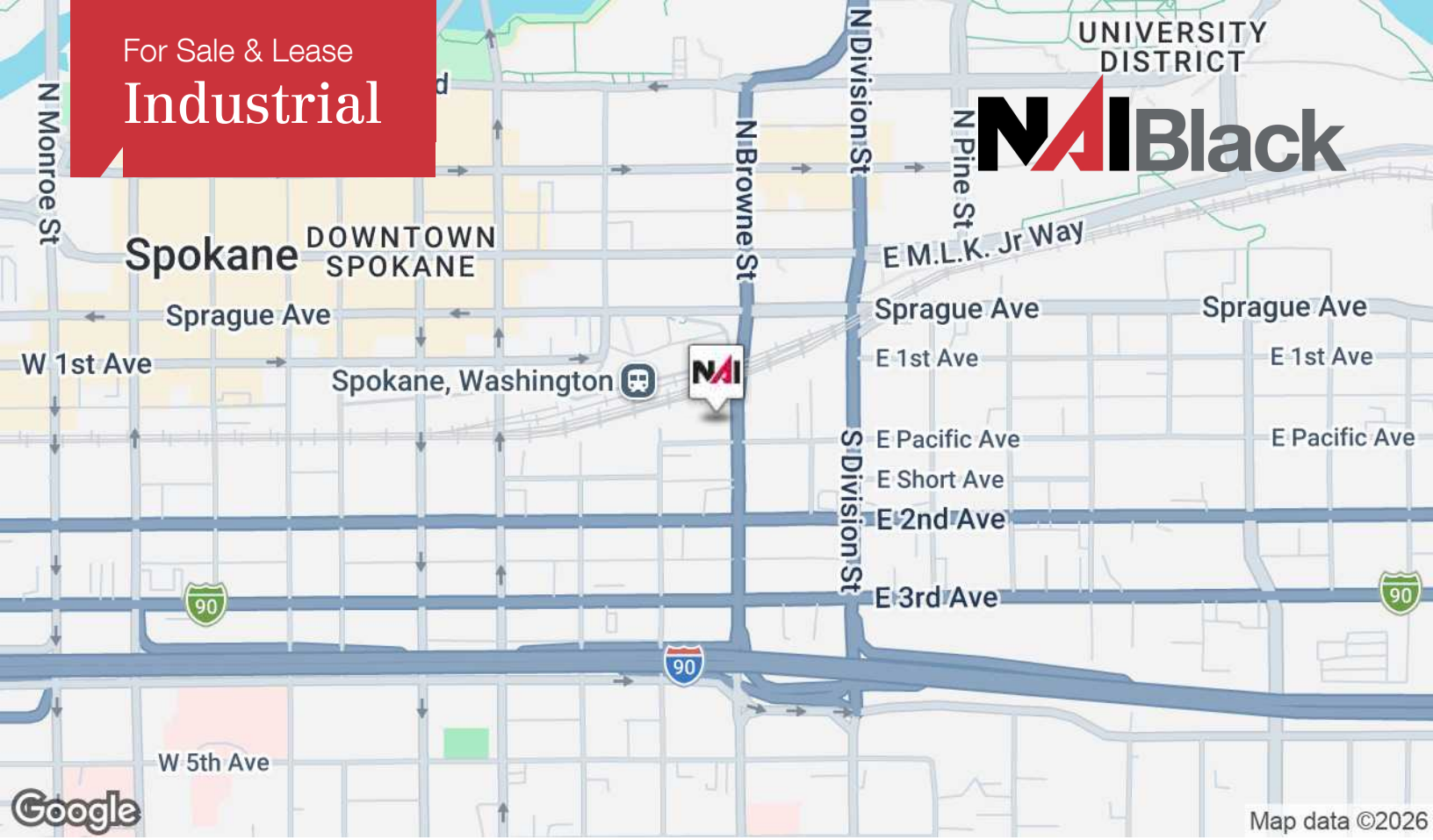
No warranty or representation, expression or implied, is made as to the accuracy of the information contained herein, and the same is submitted subject to errors, omissions, change or price, rental or other conditions, prior to sale, lease, financing, or withdrawal without notice, and of special listing conditions imposed by our principals no warranties or representations are made as to the condition of the property or any hazards contained therein or any to be implied.

801 W. Riverside Avenue, Suite 300  
Spokane, WA 99201  
509 623 1000 tel  
[naiblack.com](http://naiblack.com)

For Sale & Lease  
**Industrial**

UNIVERSITY DISTRICT

**NAI Black**



No warranty or representation, expression or implied, is made as to the accuracy of the information contained herein, and the same is submitted subject to errors, omissions, change or price, rental or other conditions, prior to sale, lease, financing, or withdrawal without notice, and of special listing conditions imposed by our principals no warranties or representations are made as to the condition of the property or any hazards contained therein or any to be implied.

801 W. Riverside Avenue, Suite 300  
Spokane, WA 99201  
509 623 1000 tel  
[naiblack.com](http://naiblack.com)



Population	1 Mile	3 Miles	5 Miles
Total Population	14,062	120,342	235,709
Average Age	46	45	41
Average Age (Male)	46	45	41
Average Age (Female)	45	45	41

Households & Income	1 Mile	3 Miles	5 Miles
Total Households	7,270	50,874	97,982
# of Persons per HH	1.52	2.21	2.32
Average HH Income	\$62,959	\$87,008	\$92,704
Average House Value	\$324,833	\$392,315	\$481,328

Demographics data derived from Esri forecast for 2025

