

FOR SUBLEASE

# TOTEM LAKE BUSINESS PARK

*2,476 SF Office/Industrial Space  
Available in Kirkland*

12815 NE 124TH ST  
KIRKLAND, WA, 98034

SUBJECT  
PROPERTY

KIDDER.COM

km Kidder  
Mathews

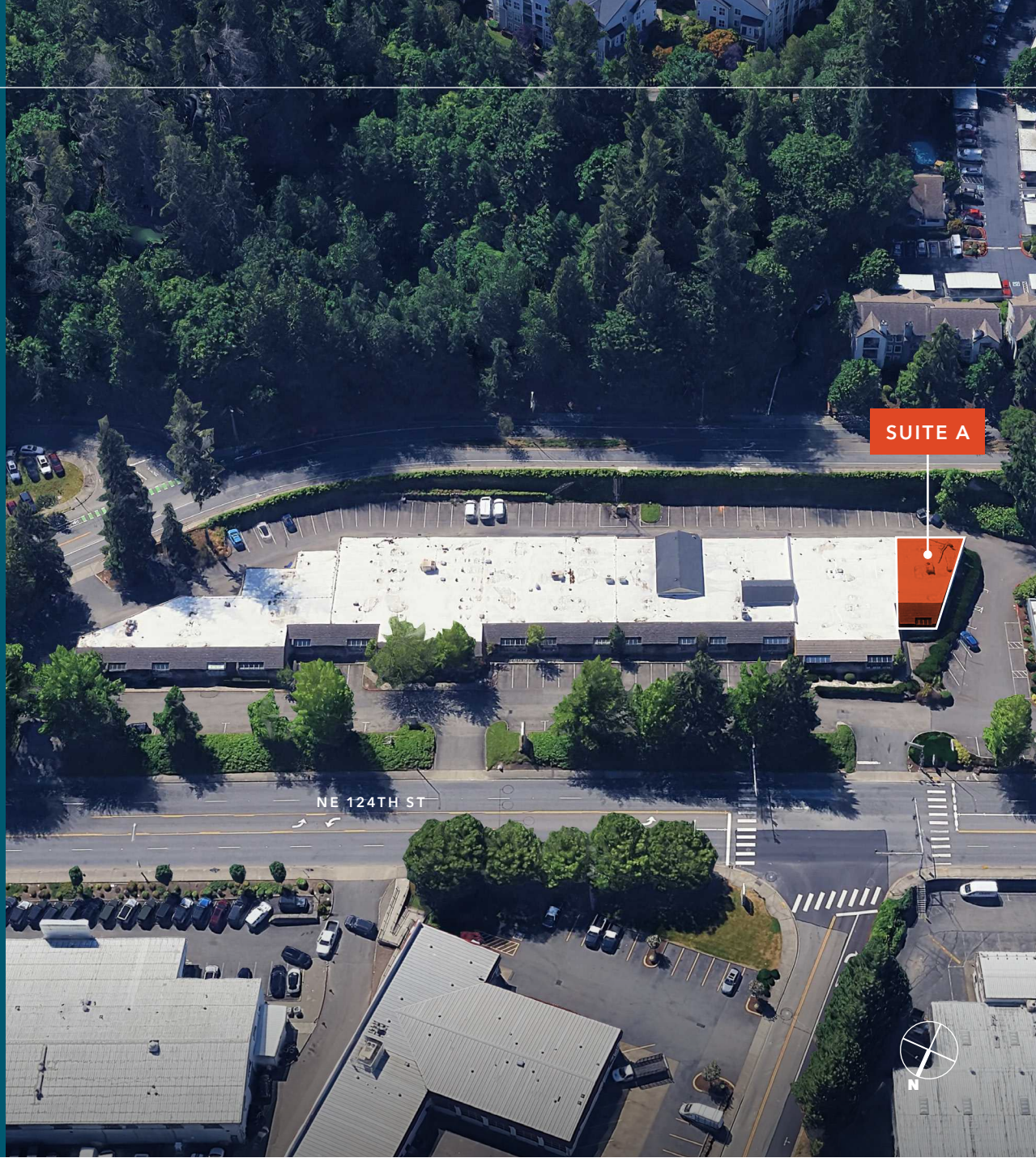
12815 NE 124TH ST

PROPERTY OVERVIEW

ADDRESS	12815 NE 124th St Kirkland, WA 98034
SUITE A	2,476 SF
OFFICE	674 SF
WAREHOUSE	1,802 SF
LEASE RATES	\$1.50/SF blended, NNN

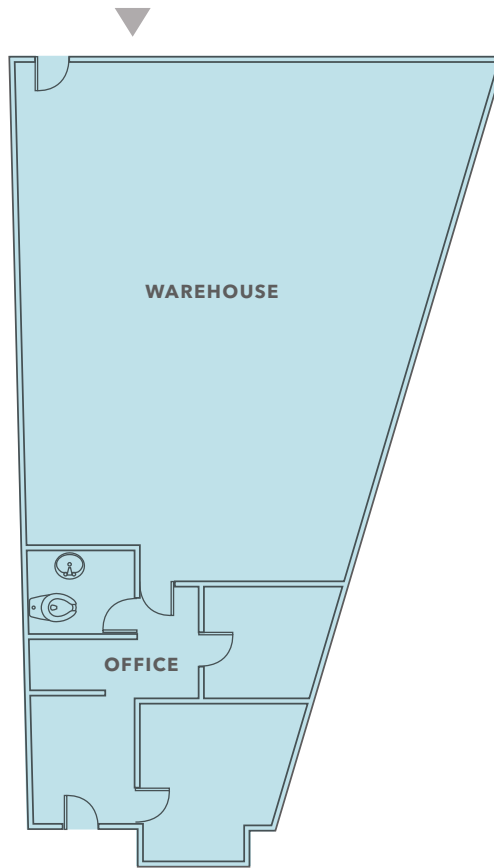
2,476 SF  
SUITE A

16'  
CLEAR HEIGHT



# FLOOR PLAN

## Suite A



*2,476 SF*

TOTAL AVAILABLE

*674 SF*

OFFICE

*1,802 SF*

WAREHOUSE



▲ Grade level loading

*Exclusively listed by*

**TODD GAUTHIER**

Executive Vice President

425.450.1118

todd.gauthier@kidder.com

**JASON BLOOM**

Executive Vice President

425.450.1102

jason.bloom@kidder.com

**KIDDER.COM**

This information supplied herein is from sources we deem reliable. It is provided without any representation, warranty, or guarantee, expressed or implied as to its accuracy. Prospective Buyer or Tenant should conduct an independent investigation and verification of all matters deemed to be material, including, but not limited to, statements of income and expenses. Consult your attorney, accountant, or other professional advisor. All Kidder Mathews designs are the sole property of Kidder Mathews. Branded materials and layouts are not authorized for use by any other firm or person.

