

MARSHALL BUILDING

2013 4TH AVE, SUITE 202
SEATTLE, WA



**CUSHMAN &
WAKEFIELD**

Will Carroll
+1 206 521 0244
will.carroll@cushwake.com

Robyn Horn
+1 206 521 0243
robyn.horn@cushwake.com

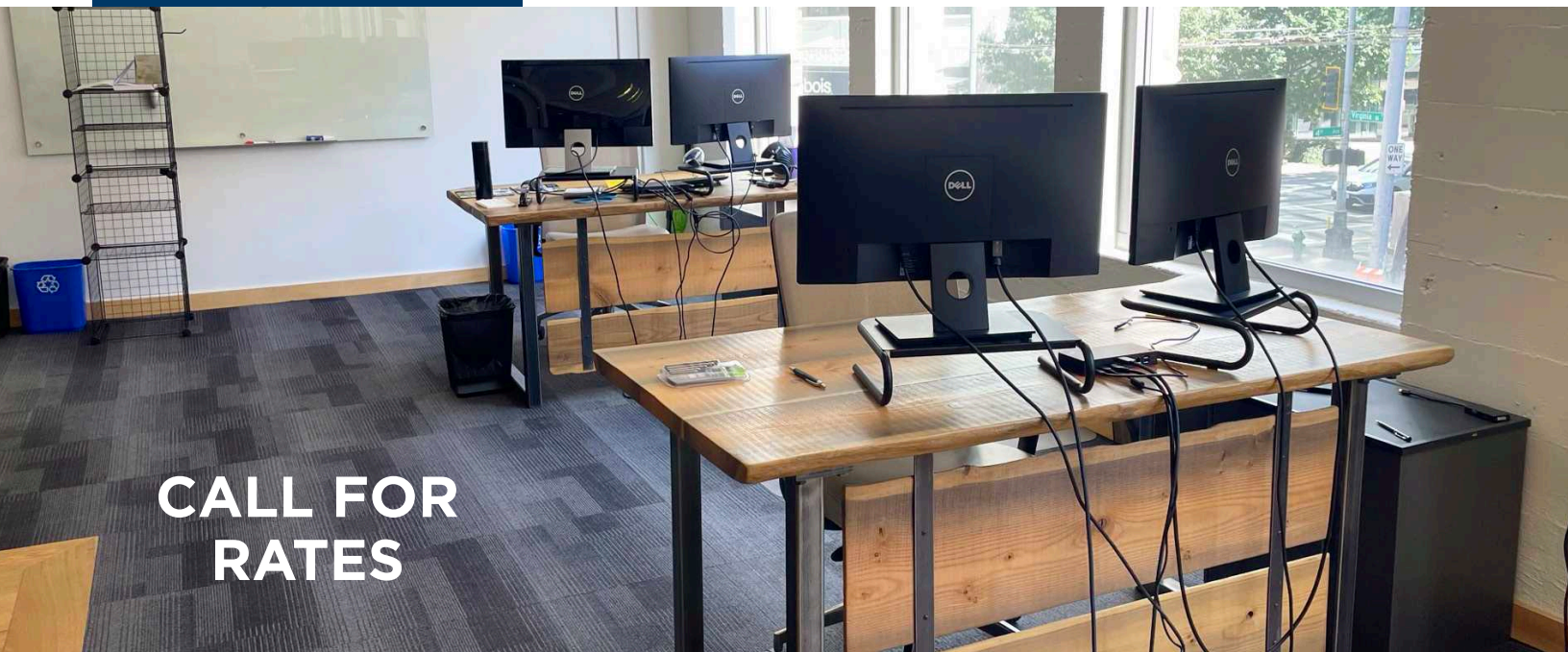
4,451 SF AVAILABLE
FOR SUBLEASE

4,451 SF
AVAILABLE

7/31/27
TERM END

FURNITURE
INCLUDED

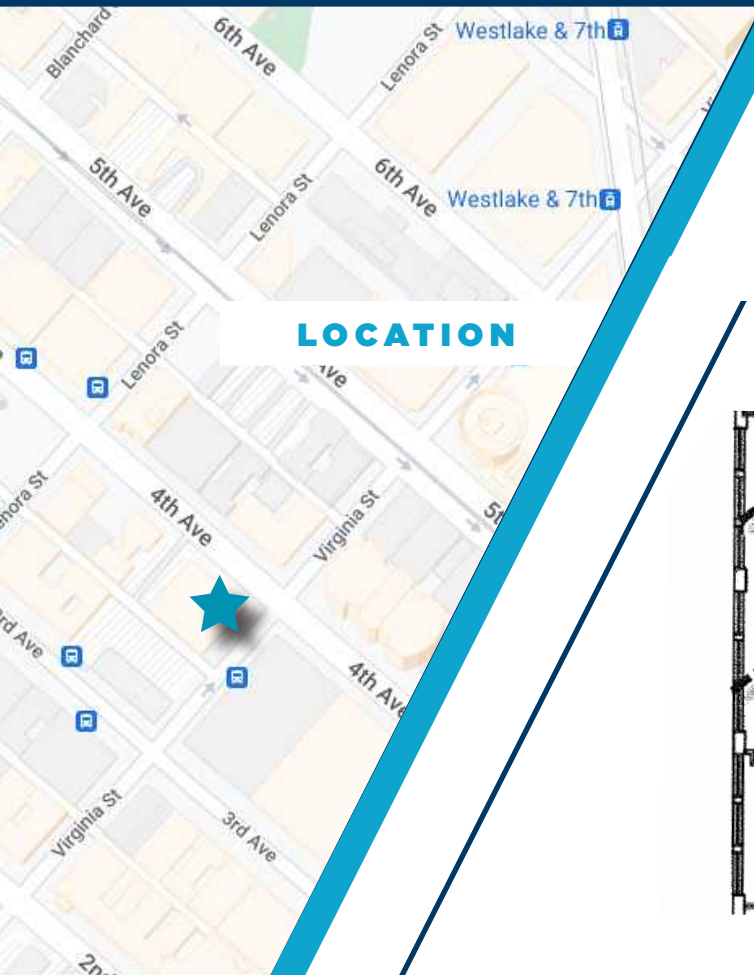
IMMEDIATE
AVAILABILITY



CALL FOR
RATES

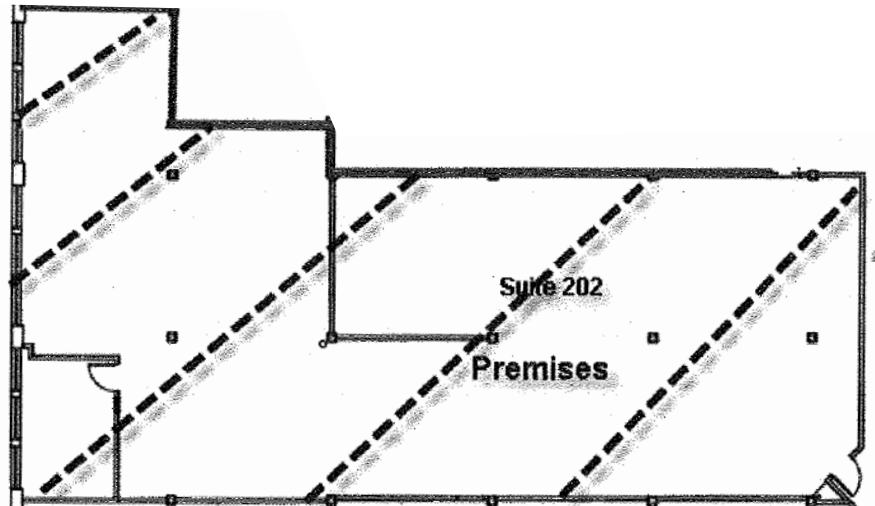
ABOUT THE SPACE

- Open, spacious suite with exposed timber, large windows and elevator lobby exposure
- 1 private office/meeting room
- Large kitchen/break area
- Conference room in suite
- Server room & storage area
- Highly walkable Belltown location near transit, restaurants, coffee shops, and more



LOCATION

FLOORPLAN





**CUSHMAN &
WAKEFIELD**



©2023 Cushman & Wakefield. All rights reserved. The information contained in this communication is strictly confidential. This information has been obtained from sources believed to be reliable but has not been verified. NO WARRANTY OR REPRESENTATION, EXPRESS OR IMPLIED, IS MADE AS TO THE CONDITION OF THE PROPERTY (OR PROPERTIES) REFERENCED HEREIN OR AS TO THE ACCURACY OR COMPLETENESS OF THE INFORMATION CONTAINED HEREIN, AND SAME IS SUBMITTED SUBJECT TO ERRORS, OMISSIONS, CHANGE OF PRICE, RENTAL OR OTHER CONDITIONS, WITHDRAWAL WITHOUT NOTICE, AND TO ANY SPECIAL LISTING CONDITIONS IMPOSED BY THE PROPERTY OWNER(S). ANY PROJECTIONS, OPINIONS OR ESTIMATES ARE SUBJECT TO UNCERTAINTY AND DO NOT SIGNIFY CURRENT OR FUTURE PROPERTY PERFORMANCE.

Will Carroll
+1 206 521 0244
will.carroll@cushwake.com

Robyn Horn
+1 206 521 0243
robyn.horn@cushwake.com

Cushman & Wakefield
601 Union Street, Suite 1100
Seattle, WA 98101
+1 206 682 0666
cushmanwakefield.com