



# 617

## EASTLAKE

617 EASTLAKE AVE E, SEATTLE, WA 98109

**NEWMARK**

**LEVI BUNDRANT**

Associate  
425.409.7405  
levi.bundrant@nrmk.com

**ED MAO**

Associate  
310.694.7191  
edward.mao@nrmk.com

# BUILDING HIGHLIGHTS



Sweeping views of Lake Union and the Seattle skyline



Outstanding visibility and accessibility from nearby freeways



High-profile exterior signage opportunity for strong brand presence



Generous on-site parking to accommodate staff and visitors



Modern HVAC system featuring bipolar ionization and MERV-13 filtration for enhanced air quality



High-end, move-in ready build-outs with full wiring in place



Secure bike storage and onsite shower facilities to support an active commute



# SUITE AVAILABILITIES



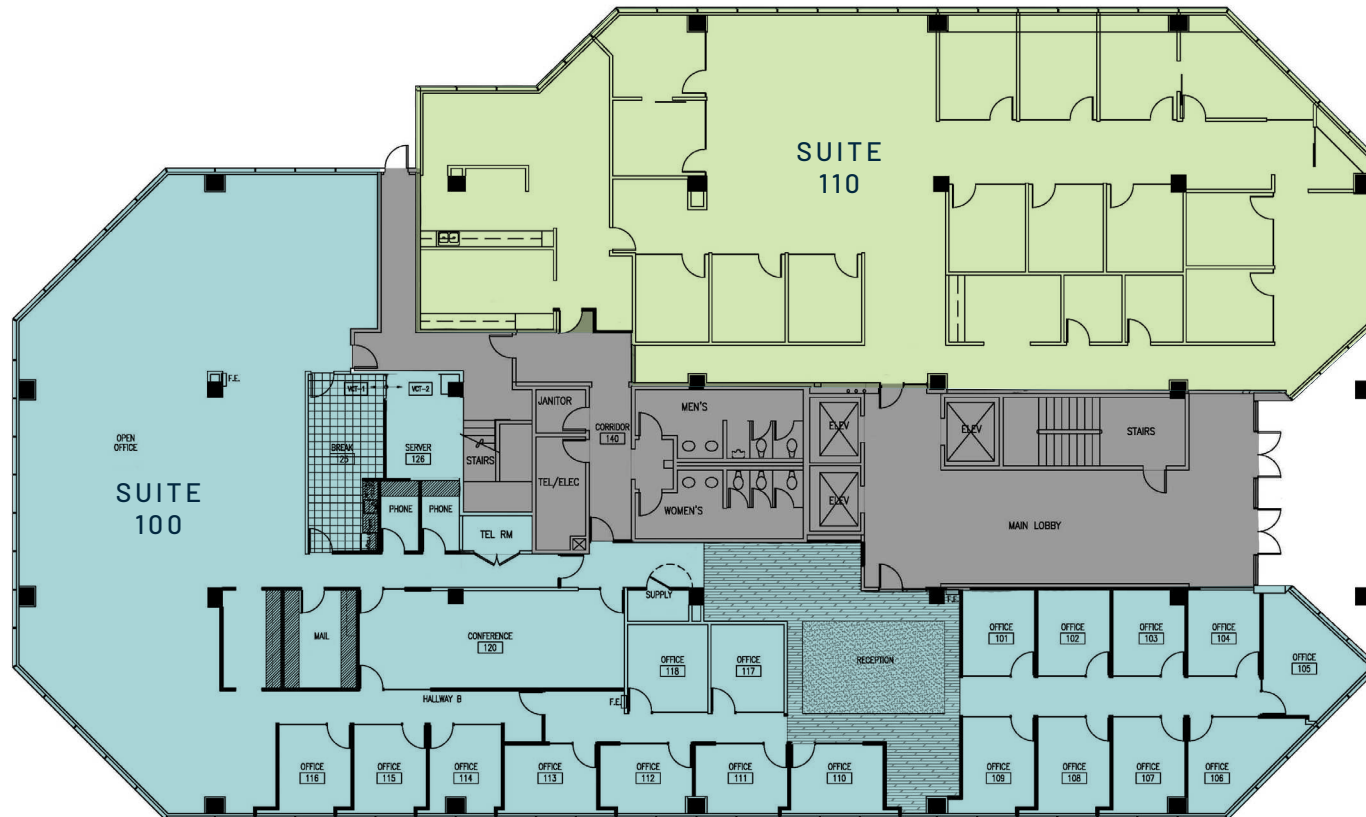
SUITE	SF
100	9,090 SF
110	6,604 SF
200	15,297 SF
210	2,727 SF
320	3,473 SF
330	3,216 SF
500	14,327 SF



# SUITE 100 & 110

**Suite 100: 9,090 SF** | Available June 1, 2026

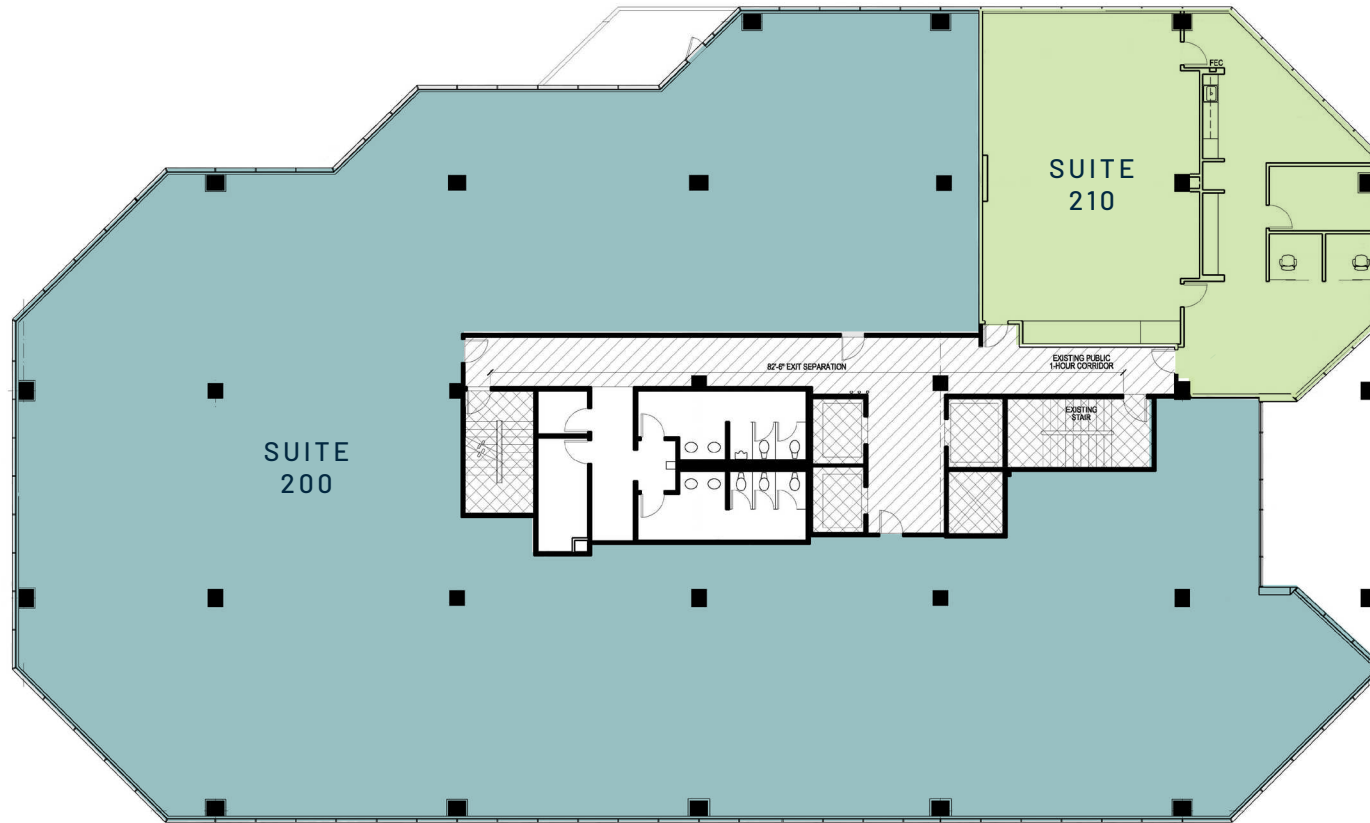
**Suite 110: 6,604 SF** | Available Now



# SUITE 200 & 210

**Suite 200: 15,297 SF** | Available Now

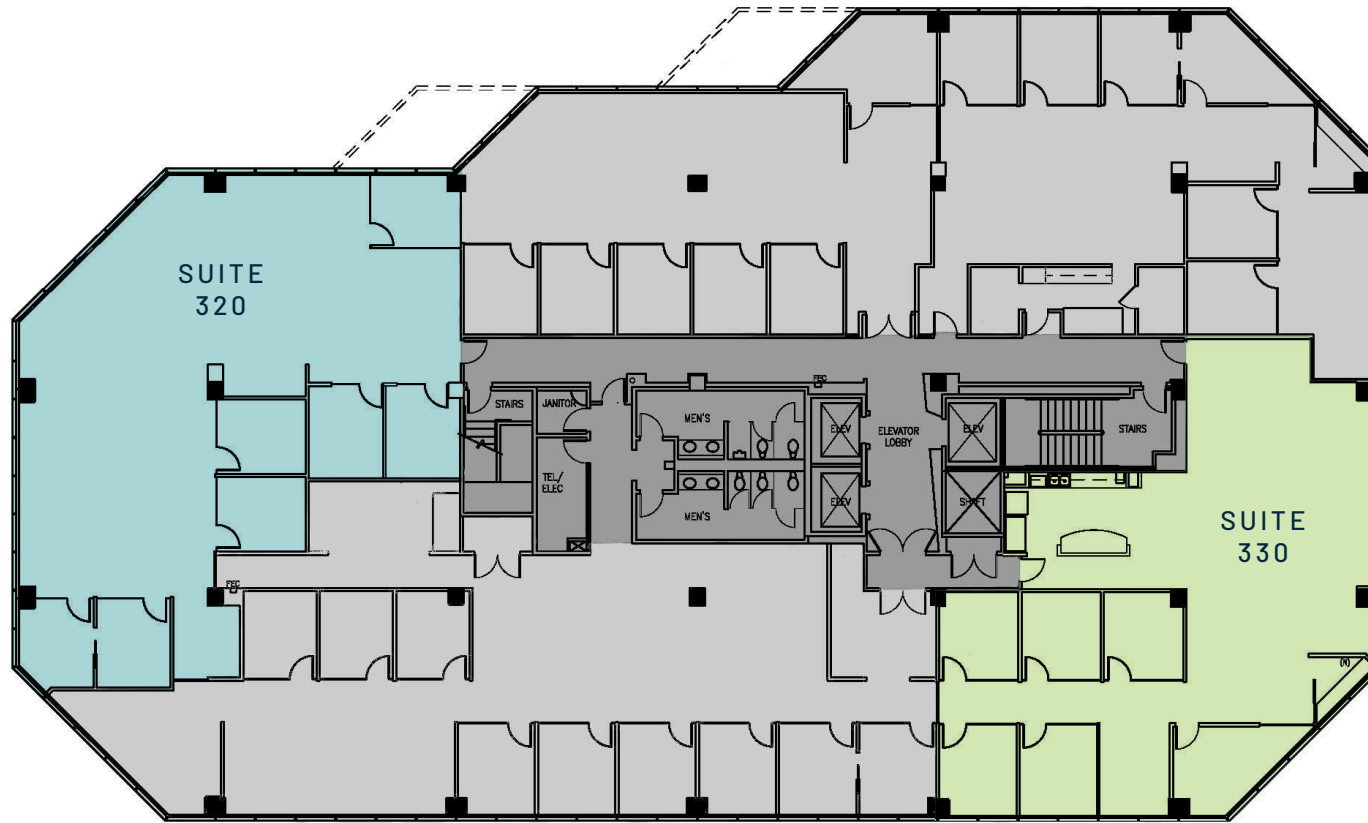
**Suite 210: 2,727 SF** | Available Now



# SUITE 320 & 330

**Suite 320: 3,473 SF** | Available Now

**Suite 330: 3,216 SF** | Available Now



# SUITE 500

14,327 SF | Available Now



# AMENITIES



# 617

## EASTLAKE

617 EASTLAKE AVE E, SEATTLE, WA 98109

### LEVI BUNDRANT

Associate

425.409.7405

[levi.bundrant@nmrk.com](mailto:levi.bundrant@nmrk.com)

### ED MAO

Associate

310.694.7191

[edward.mao@nmrk.com](mailto:edward.mao@nmrk.com)

# NEWMARK

