

TOK

COMMERCIAL



663 W CANFIELD

OFFICE SPACE FOR LEASE | COEUR D'ALENE, ID 83815

CONTACT

DANNY DAVIS, CCIM
208.691.6003
danny@tokcommercial.com

HIGHLIGHTS

- Quality stand alone building
- Excellent curb appeal
- Central location and easily accessible
- Ample parking

DETAILS

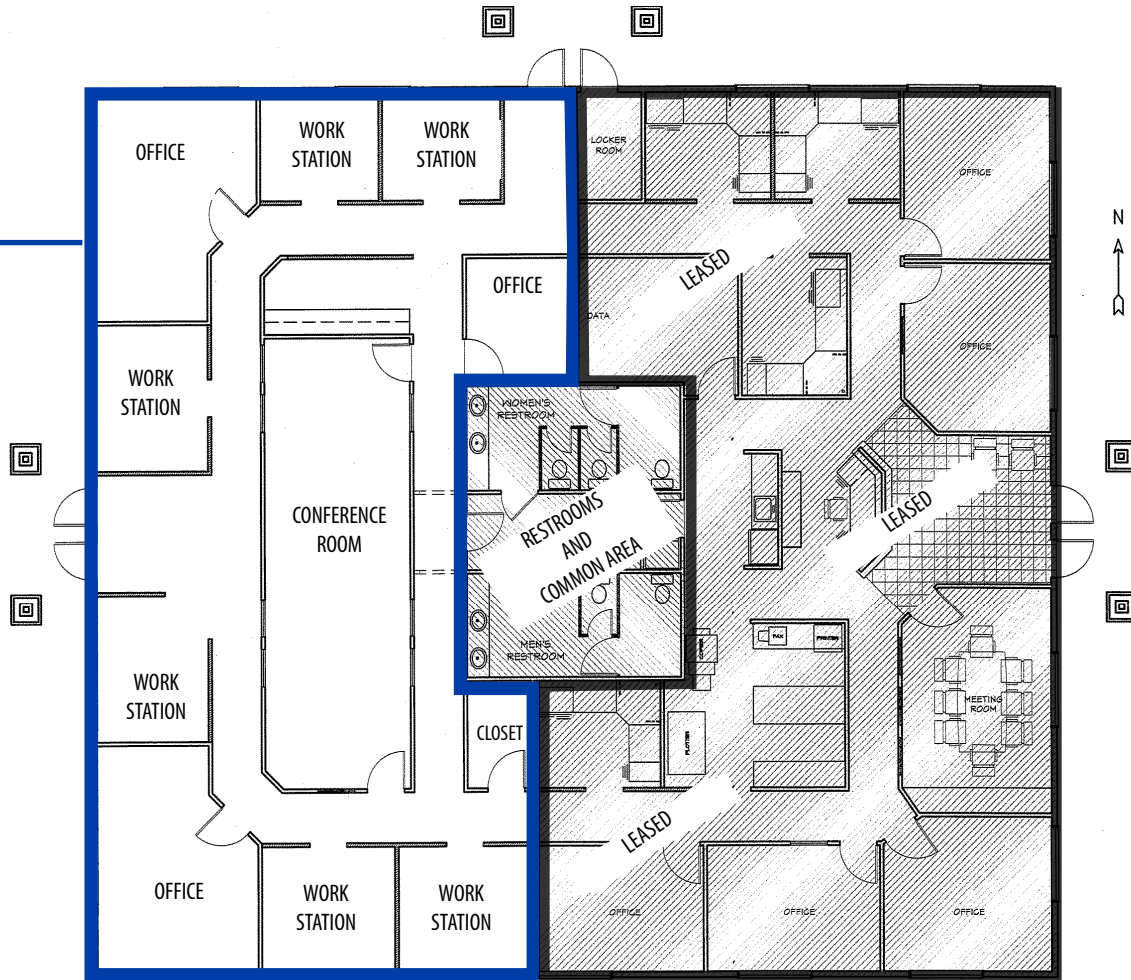
SPACE	SIZE	RATE
Suite B	2,400 SF	\$18.00/SF, NNN
LOT SIZE:	.64 Acres	LEASE TYPE: NNN
BLDG SIZE:	5,390 SF	EST. NNN: \$5.27/SF
YEAR BUILT:	2006	AVAILABLE: Immediately
PARKING:	Ample	BASE RENT: ± \$3,600/Mo
ZONING:	C-17	NNN EXPENSES: ± \$1,054/Mo



THIS PROPERTY IS EXCLUSIVELY MARKETING BY TOK INLAND NORTHWEST LLC DBA TOK COMMERCIAL. This information was obtained from sources believed reliable but cannot be guaranteed. Any opinions or estimates are used for example only.

FLOOR PLAN

AVAILABLE
± 2,400 SF



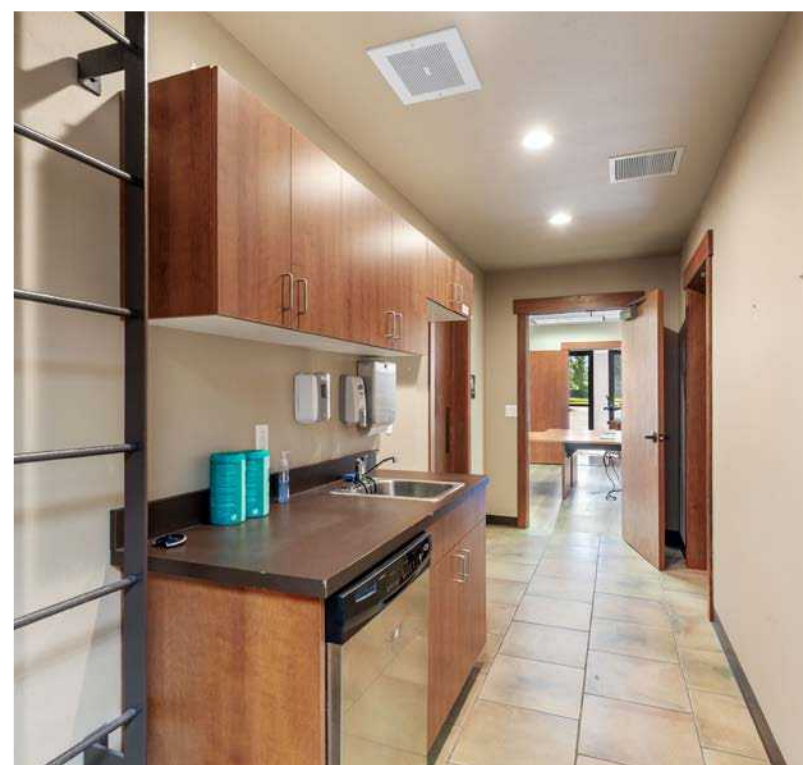
PHASE 2 PROPOSED
T.I. FLOOR PLAN
2470 SQ. FT.

EXISTING
T.I. FLOOR PLAN
2950 SQ. FT.

W CANFIELD AVE

THIS PROPERTY IS EXCLUSIVELY MARKETED BY TOK INLAND NORTHWEST LLC DBA TOK COMMERCIAL. This information was obtained from sources believed reliable but cannot be guaranteed. Any opinions or estimates are used for example only.







DOWNTOWN CDA



33,403 VPD

SILVERLAKE MALL

Planet Fitness
Bath & Body Works
Black Sheep
Harry Potter

McDonald's
Applebee's



WCANFIELD AVE

SITE

WCANFIELD AVE

TOK
COMMERCIAL

THIS PROPERTY IS EXCLUSIVELY MARKETED BY TOK INLAND NORTHWEST LLC DBA TOK COMMERCIAL. This information was obtained from sources believed reliable but cannot be guaranteed. Any opinions or estimates are used for example only.



35,189 VPD

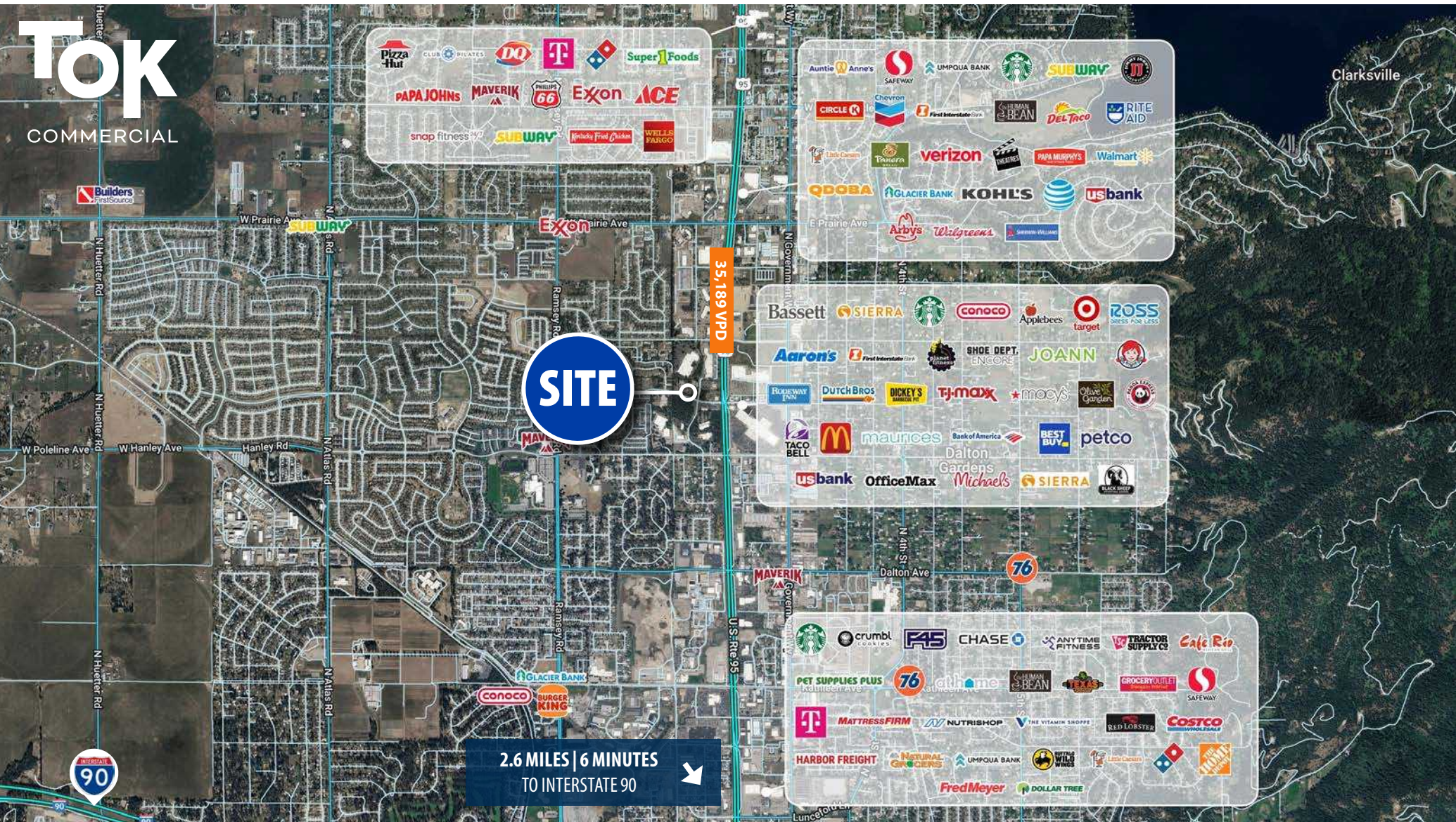


SITE

N MINERAL DR

TOK
COMMERCIAL

AERIAL MAP SURROUNDED BY AMENITIES



1 MILE RADIUS

POPULATION 8,267 1 MI. RADIUS	HISTORIC ANN. GROWTH 3.0% 1 MI. RADIUS	AVG. HOUSEHOLD INC. \$109,516 1 MI. RADIUS

3 MILE RADIUS

POPULATION 61,397 3 MI. RADIUS	HISTORIC ANN. GROWTH 2.3% 3 MI. RADIUS	AVG. HOUSEHOLD INC. \$98,854 3 MI. RADIUS

5 MILE RADIUS

POPULATION 96,499 5 MI. RADIUS	HISTORIC ANN. GROWTH 2.2% 5 MI. RADIUS	AVG. HOUSEHOLD INC. \$104,308 5 MI. RADIUS