

# Old Wenatchee Jail

An architectural rendering of a vibrant downtown street scene. The central focus is a historic, two-story brick building with a gabled roof and a small porch, identified as the Old Wenatchee Jail. To its left is a modern, multi-story building with a light-colored facade and large windows, featuring an outdoor patio with orange umbrellas. To the right is another modern building with a dark facade and a sign that reads "COFFEE & PIE". The street is lined with lush greenery, including trees and purple flowers. Pedestrians are seen walking on the sidewalks, and a person is pushing a stroller. The sky is bright blue with scattered white clouds.

Unlocking History. Defining Downtown.

# Welcome to Wenatchee, WA

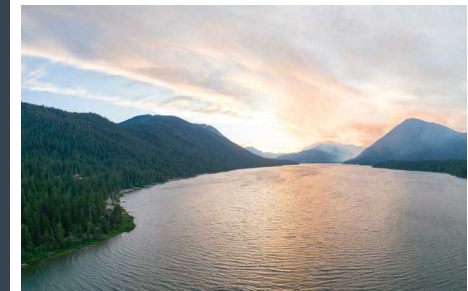
At the meeting point of the Cascade Mountains and the Columbia River lies Wenatchee – the Apple Capital of the World – a city where history and creativity converge. At the southern edge of its vibrant downtown, a new story is unfolding: the restoration of the 1910 Old Jailhouse and the addition of contemporary masonry buildings in a striking architectural dialogue. Together, they're creating a destination where heritage meets modernity – a premier culinary and cultural hub that celebrates Wenatchee's spirit of nature, recreation, and community.

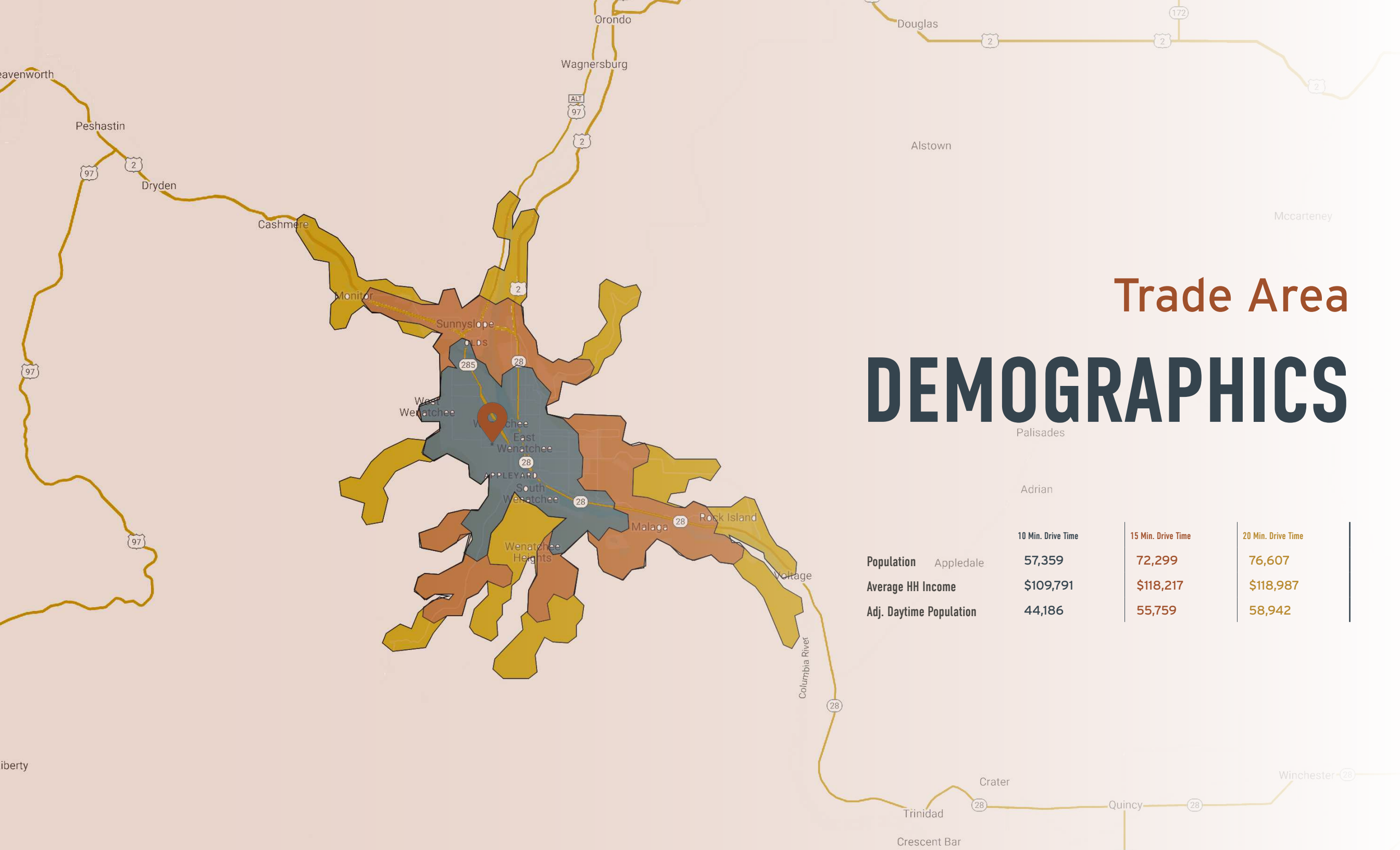


Mountain  
Gateway...



...Community  
Current





# Trade Area

# DEMOGRAPHICS

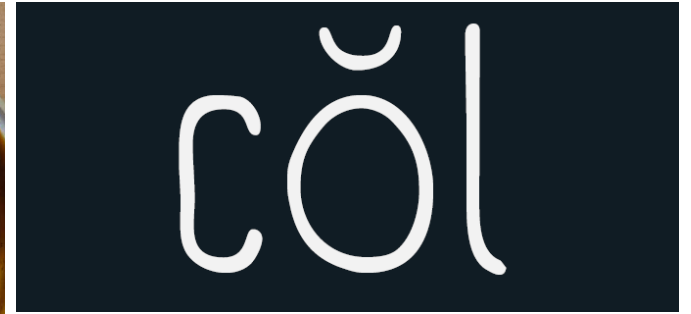
	10 Min. Drive Time	15 Min. Drive Time	20 Min. Drive Time
<b>Population</b>	57,359	72,299	76,607
<b>Average HH Income</b>	\$109,791	\$118,217	\$118,987
<b>Adj. Daytime Population</b>	44,186	55,759	58,942

Authenticity Meets Contemporary Craft

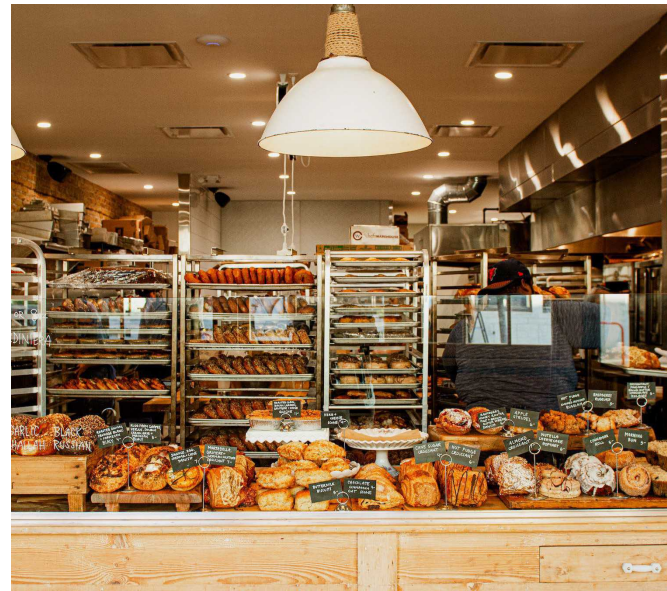
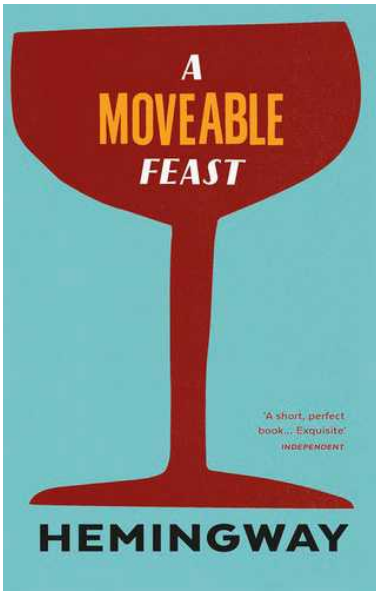
# A Transformative Public Realm

- Preserved 1910 Brick Original Architectural Elements.
- Restaurant + Terrace + Cocktail Bar + Bistro + Cafe + Bakery + Butcher + Larder
- New, Dedicated Public Plaza and Courtyard Activation.
- Adjacent to The Majestic Luxury Apartments
- Dedicated Underground Parking Access.
- North Building Space Available





The primary restaurant concept. cöl spans both floors of the south building, split between a more casual daytime space on the ground level, and a more serious evening dining space on the second level.





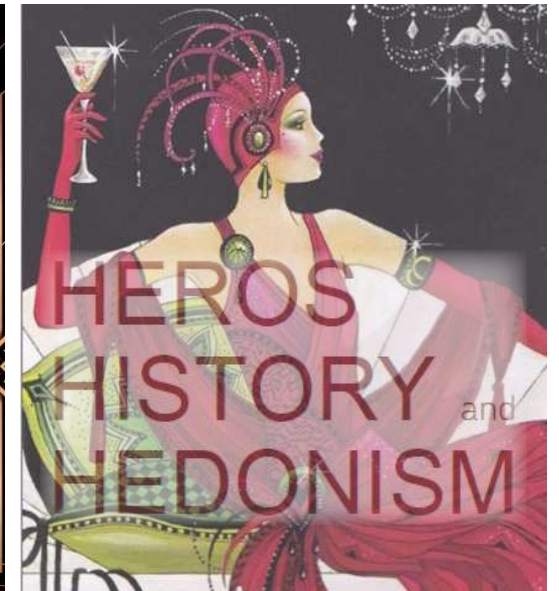
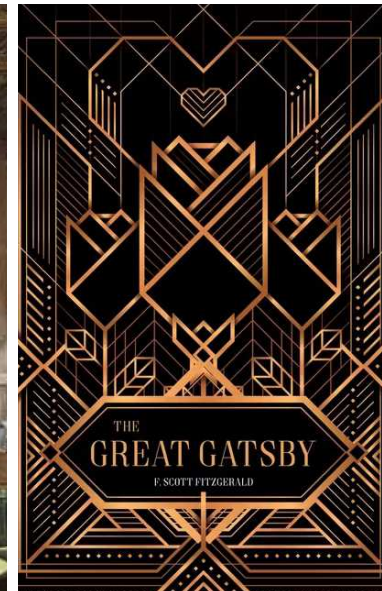
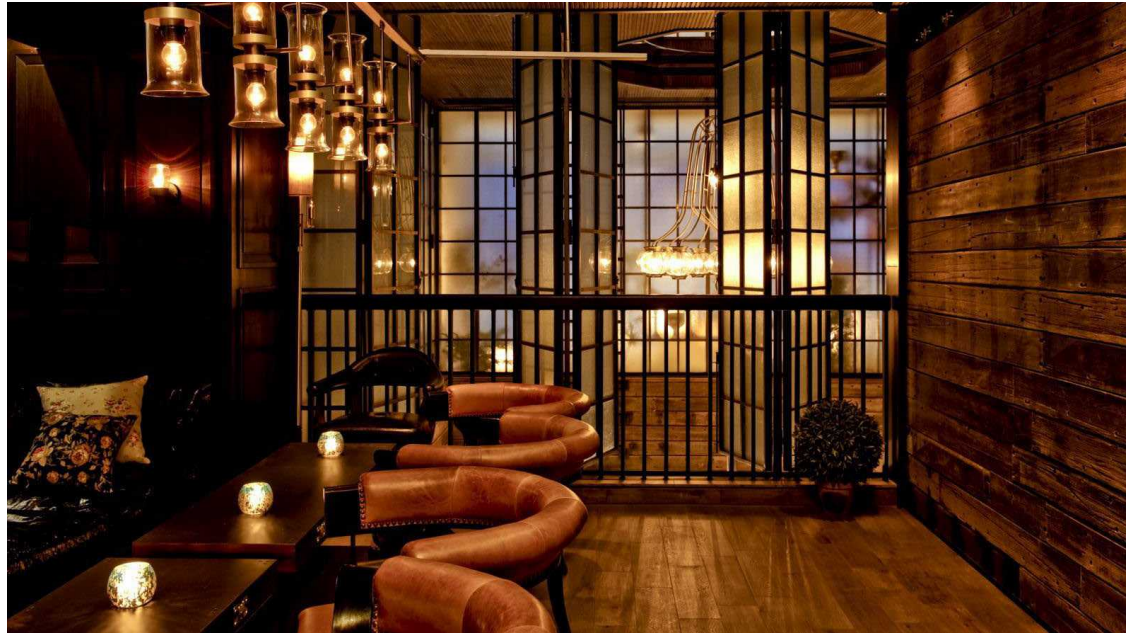
# THE VALE BUTCHER & LARDER

The first floor of the jailhouse is home to a Spanish-style butcher and provisions shop/ Primarily serving as a retail outlet, there is limited seating for guests to enjoy burgers and other items off the grill. The aesthetic here stands in opposition to Miss Veedol's upstairs. Playful wall stencils and tiling create an upbeat atmosphere. The clean, bright and colorful space is in juxtaposition to the dark anti-authority vibes upstairs.

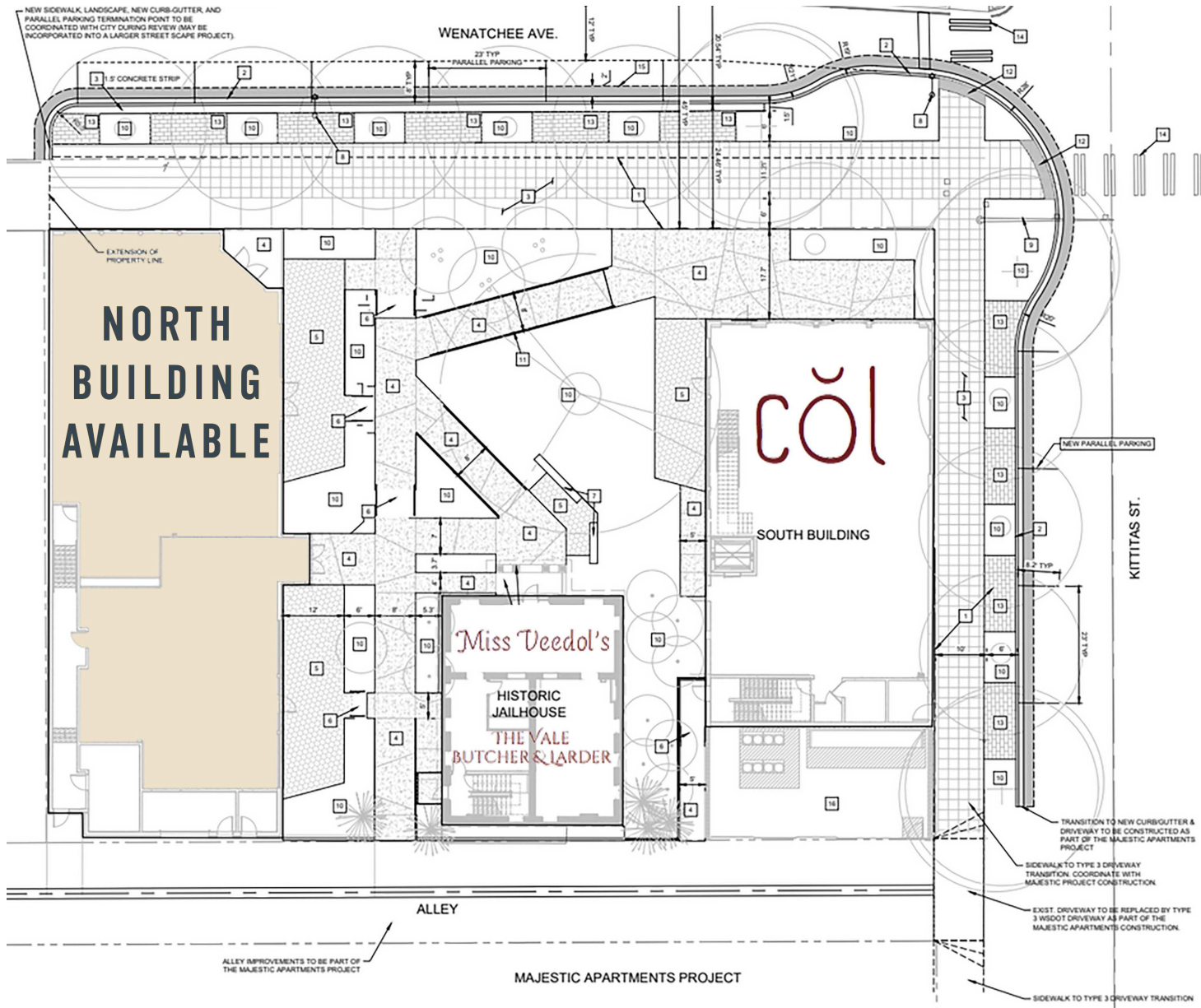


# Miss Deedol's

The Jailhouse second floor speakeasy concept specializing in classic cocktails and champagne. The art deco and art nouveau stylings hearken back to the historical era of the jailhouse. Imbued with subtle aviation iconography.







# Inquire



PACIFIC ASSET ADVISORS, INC.

**Broker Contact:**

Ryan Cornish  
206.375.6142  
ryan@paadvisors.com



**Broker Contact:**

Angela Oliveri  
206.853.1330  
aoliveri@fwp-inc.com