

Office/Warehouse Space for Lease

Lake Industrial Park



Sam Morse
 Cell: 509-370-9166
 smorse@cantucommercial.com

Kade Morse
 Cell: 509-954-1450
 kmorse@cantucommercial.com



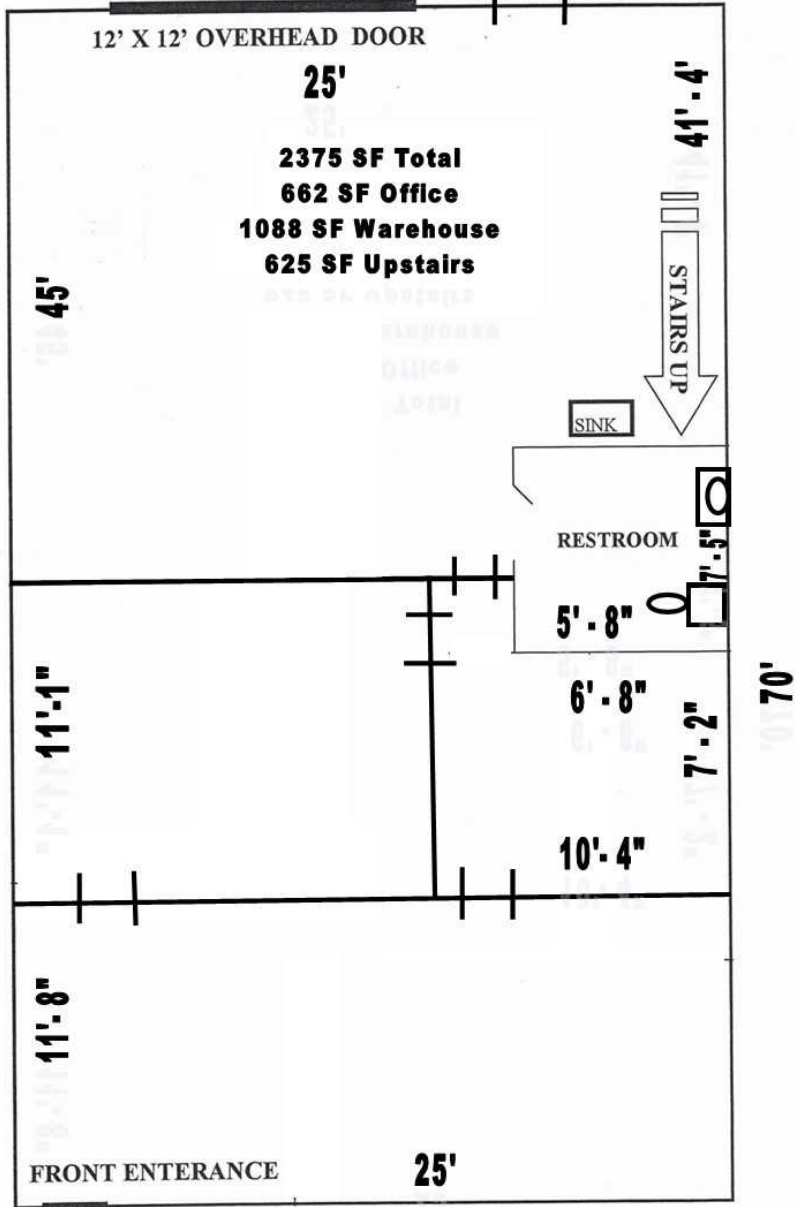
524 W Indiana Ave Suite A
 Spokane, WA 99205
 Office (509) 777-1111
 Fax (509) 777-1112
 www.cantucommercial.com

- Shared Dock Well for All Tenants
- Located 1 Blk East of Fancher
- Fenced Yard Area Available
- Signage Available
- New Pole Sign
- Ample On-Site Parking
- 3 Phase Power Available
- Each Unit has a 12'X12' or 12' x 10' Roll Up Door-See Floor Plan
- NNN's Estimated at .28¢ PSF

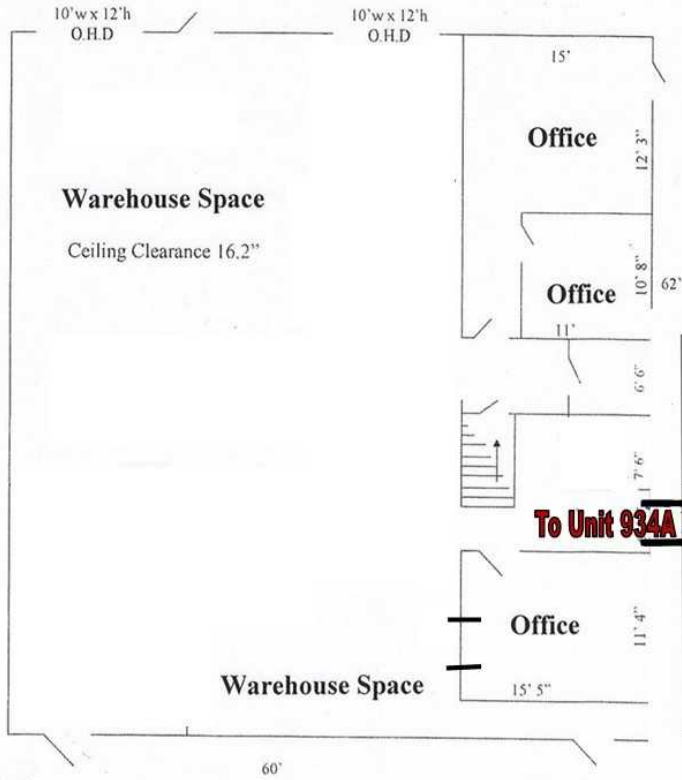
<u>UNIT</u>	<u>TOTAL</u>	<u>OFFICE</u>	<u>WHSE</u>	<u>2ND FLOOR</u>	<u>RENT & NNN</u>
#924	2,375 SF	662 SF	1,088 SF	625 SF	\$2,388.00 + \$ 612.75 NNN
#926	2,166 SF	416 SF	1,334 SF	416 SF	\$2,060.00 + \$ 490.00 NNN
#928	2,025 SF	275 SF	1,475 SF	275 SF	\$1,925.00 + \$ 490.00 NNN
#930-932	4,650 SF	360 SF	3,360 SF	930 SF	\$4,185.00 + \$1,041.60 NNN
#934 A&B	3,100 SF	540 SF	1,890 SF	670 SF	\$2,790.00 + \$ 680.40 NNN

924 N LAKE

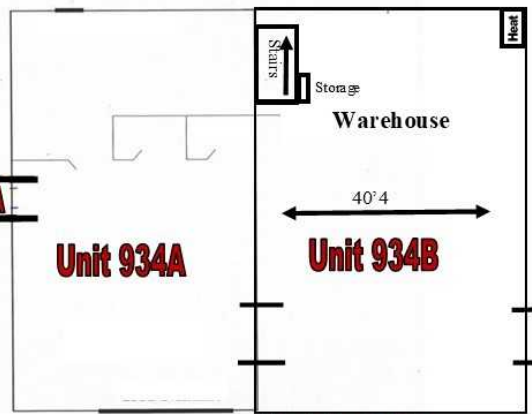
STE 924



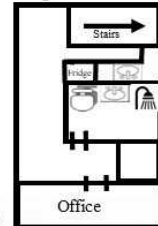
Unit 930 & 932



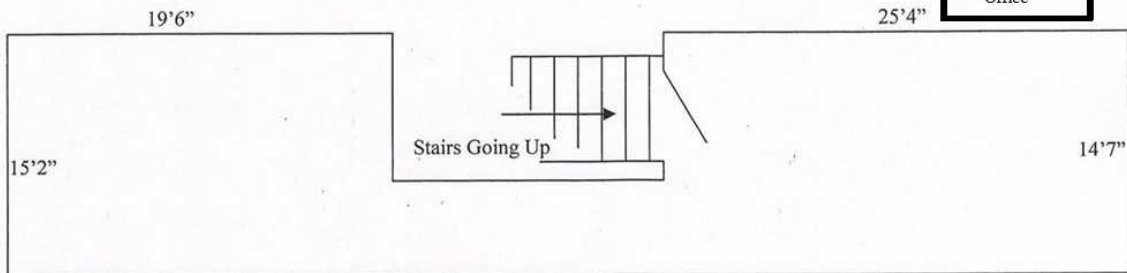
Unit 934 A & B



Upstairs 934B



Upper Floor Space 930-932 Unit



BLDG "A"

BAY #1014 leased	BAY #1016 leased	BAY #1018 leased	BAY #1020 leased	BAY #1022 leased	BAY #1024 leased	BAY #1026 leased	FENCED YARD w/ 19' WIDE GATE
BAY #1012 leased							
BAY #1010 leased							

BLDG "B"

BAY #910 leased	BAY #912 leased	BAY #914 leased	BAY #916 leased	BAY #918 leased	BAY #920 leased	BAY #922 leased	BAY #924 AVAIL	BAY #926 leased	BAY #928 leased
--------------------	--------------------	--------------------	--------------------	--------------------	--------------------	--------------------	-------------------	--------------------	--------------------

BLDG "D"

BAY #1 930 & 932 AVAILABLE	BAY #2A 934A AVAIL	BAY #2B 934B AVAIL
--	--------------------------	--------------------------

LAKE RD

LAKE INDUSTRIAL PARK SITE PLAN

This drawing is for convenience only. All critical measurements should be verified.