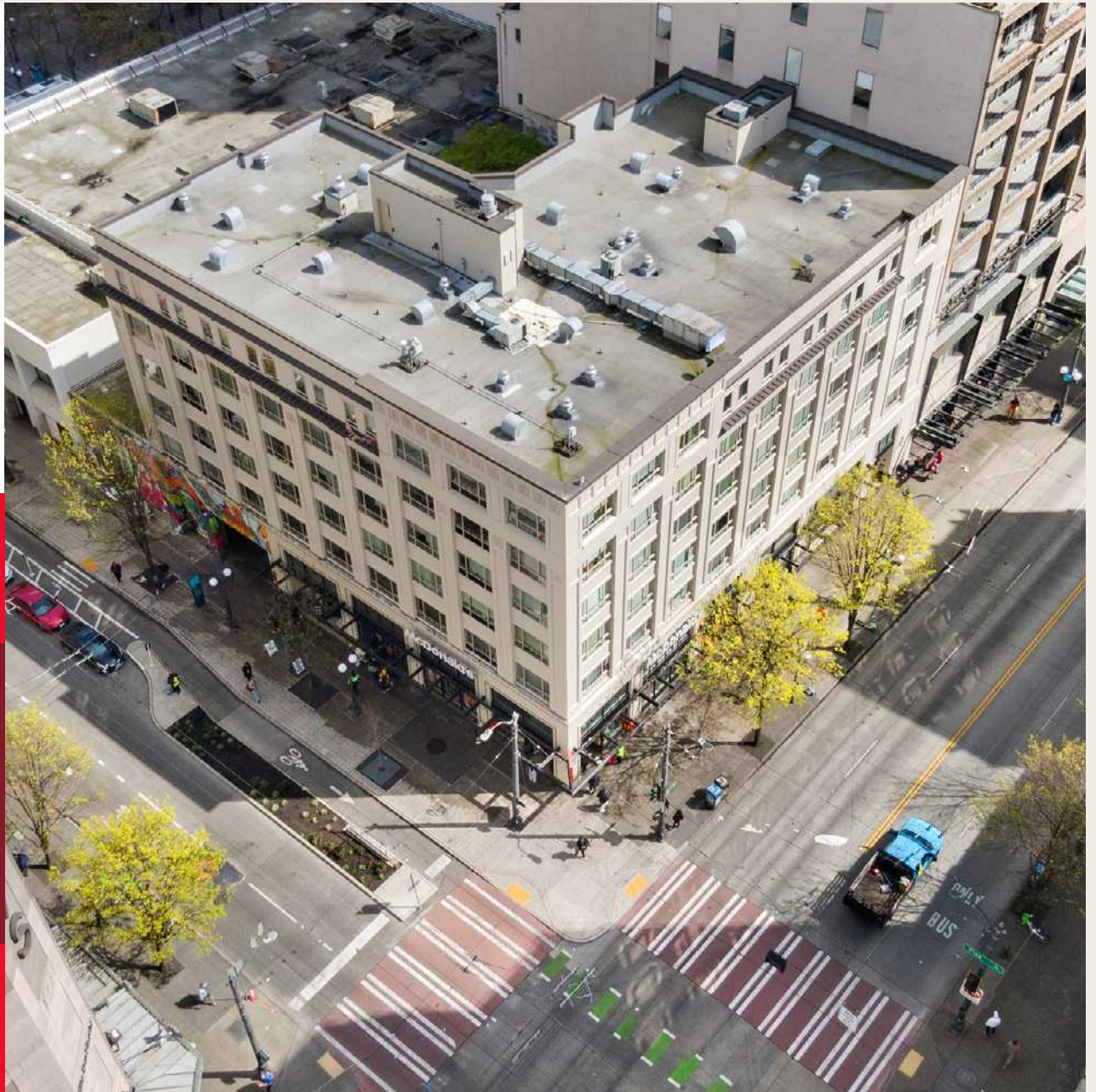


Gilmore Apartments

3,305 SF
Available

1528 3rd Avenue,
Seattle, WA 98101

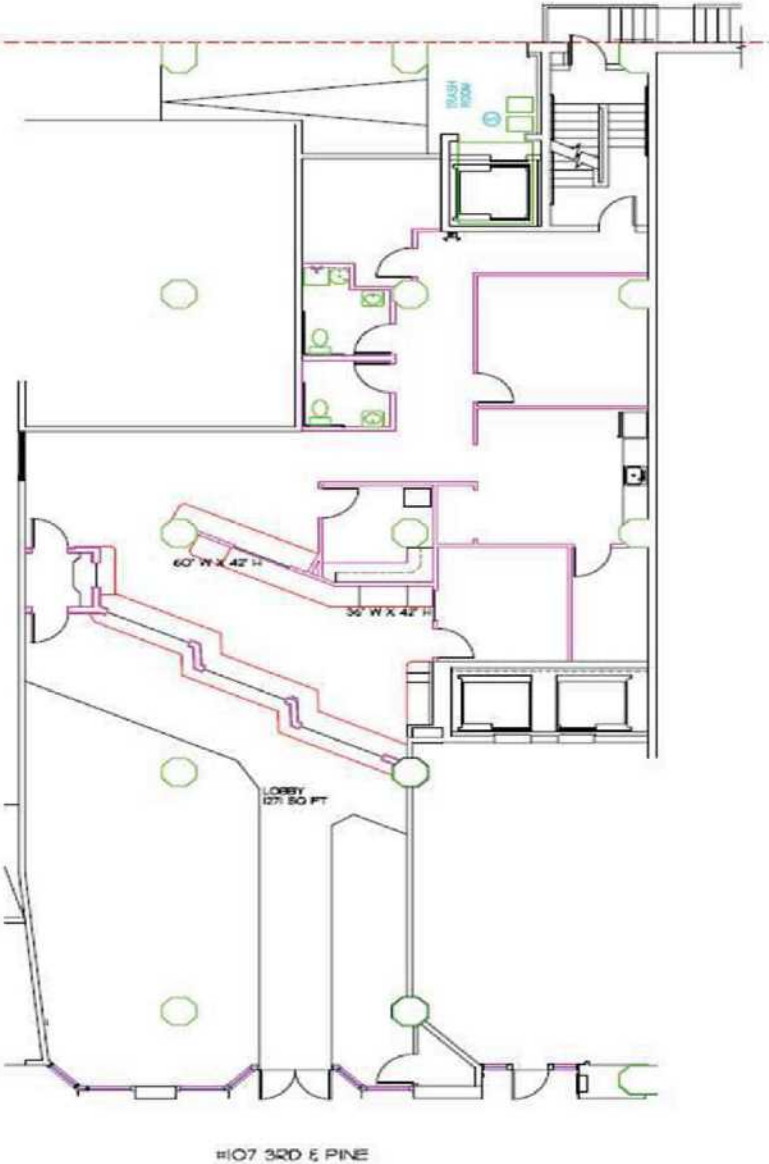


3,305 SF Available

- Walk Score 99 – Walker’s Paradise
- Transit Score 100 – unmatched commuter exposure
- Surrounded by thousands of residents, office workers, and hotel guests
- Steps from Westlake, Pike Place Market, and Seattle’s retail core
- Located on Seattle’s busiest transit corridor
- Positioned to benefit from the continued resurgence of downtown foot traffic



FLOOR PLAN





Gilmore Apartments

1528 3rd Avenue, Seattle, WA 98101

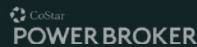
Blake Taylor

blake@wccommercialrealty.com

206 931 0525

WCCR | West Coast
Commercial
Realty

DISCLAIMER: The above information has been secured from sources believed to be reliable, however, no representations are made to its accuracy. Prospective tenants or buyers should consult their professional advisors and conduct their own independent investigation. Site plan and configuration are subject to change. Properties are subject to change in price and/or availability without notice. West Coast Commercial Realty, LLC



206 283 5212

wccommercialrealty.com