

10320 PROPERTY

10320 122nd Street East, Puyallup, WA 98374



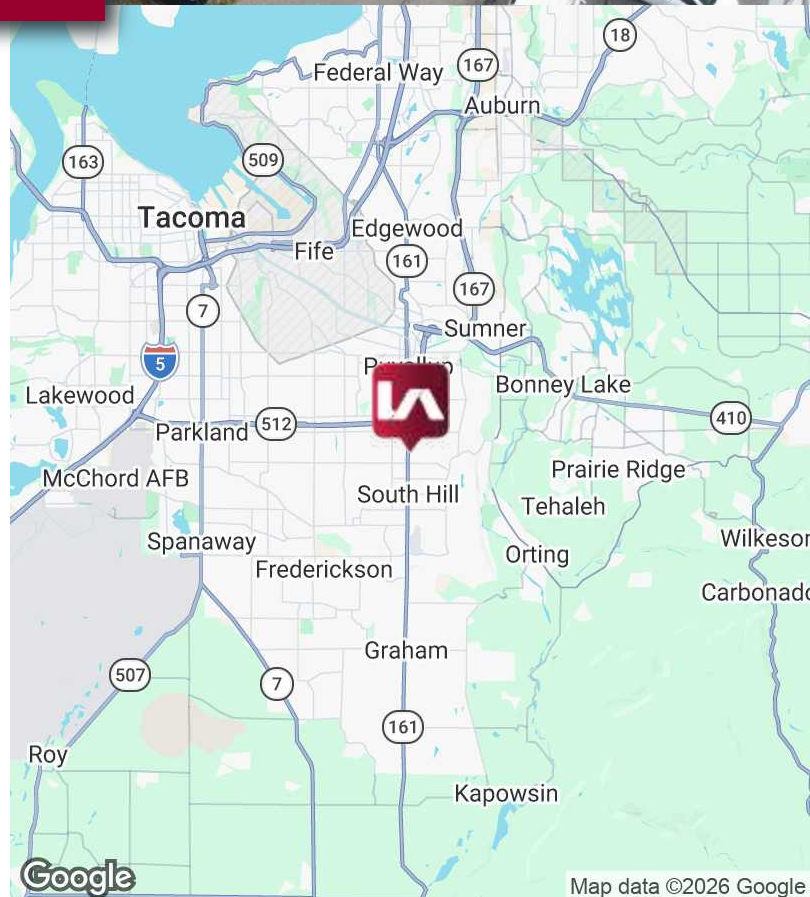
PUYALLUP INDUSTRIAL FOR SUBLEASE

LISTING INFORMATION

ADDRESS:	10320 122nd Street East, Puyallup WA
BUILDING SF:	4,000 SF
LOT SIZE:	1.96 Acres
LEASE RATE:	Call broker for rates
ZONING:	UCOR - Rental and Repair Services
AVAILABILITY:	Available now
SUBLEASE EXP:	September 30, 2030

COMMENTS

- ±4,000 SF building
- Metal construction
- Drive thru four service bays
- UCOR zoning
- Two access points to S Meridian Ave
- Great location just off Meridian S (SR-161)
- Close proximity to restaurants and retail

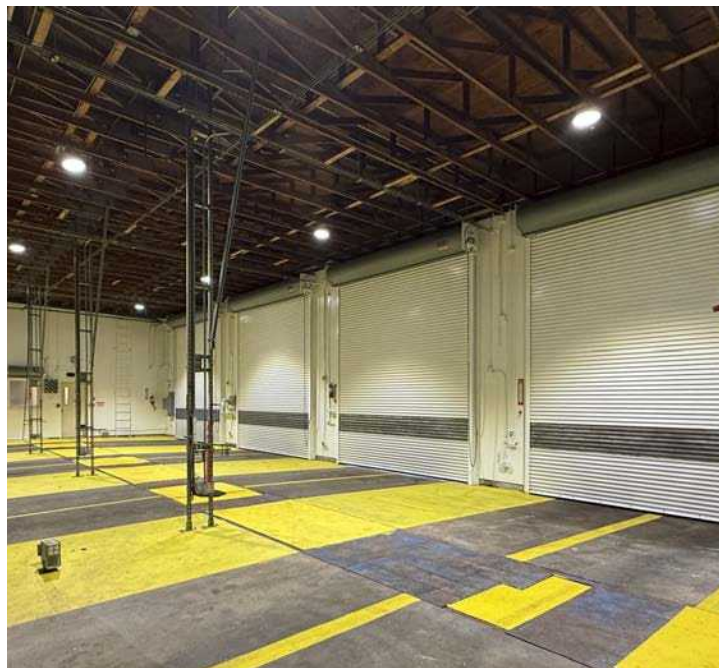


10320 PROPERTY

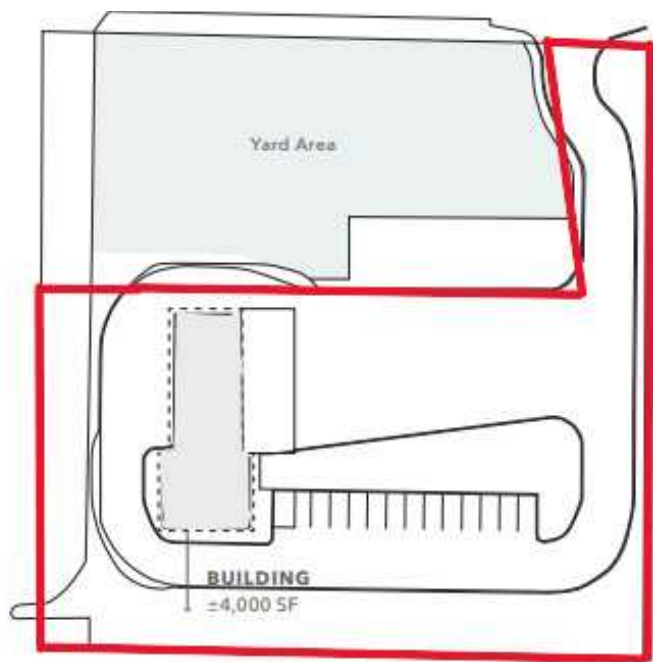
10320 122nd Street East, Puyallup, WA 98374



Service Bays



Service Bays



Site Plan



Property Outline

CONTACT

Simran Kaur

253.238.2844

skaur@lee-associates.com

Vanessa Herzog, SIOR, CCIM

253.444.3020

vherzog@lee-associates.com

Justin Froelich

253.238.0047

jfroelich@lee-associates.com

We obtained the information above from sources we believe to be reliable. However, we have not verified its accuracy and make no guarantee, warranty or representation about it. It is submitted subject to the possibility of errors, omissions, change of price, rental or other conditions, prior sale, lease or financing, or withdrawal without notice. We include projections, opinions, assumptions or estimates for example only, and they may not represent current or future performance of the property. You and your tax and legal advisors should conduct your own investigation of the property and transaction.

10320 PROPERTY

10320 122nd Street East, Puyallup, WA 98374

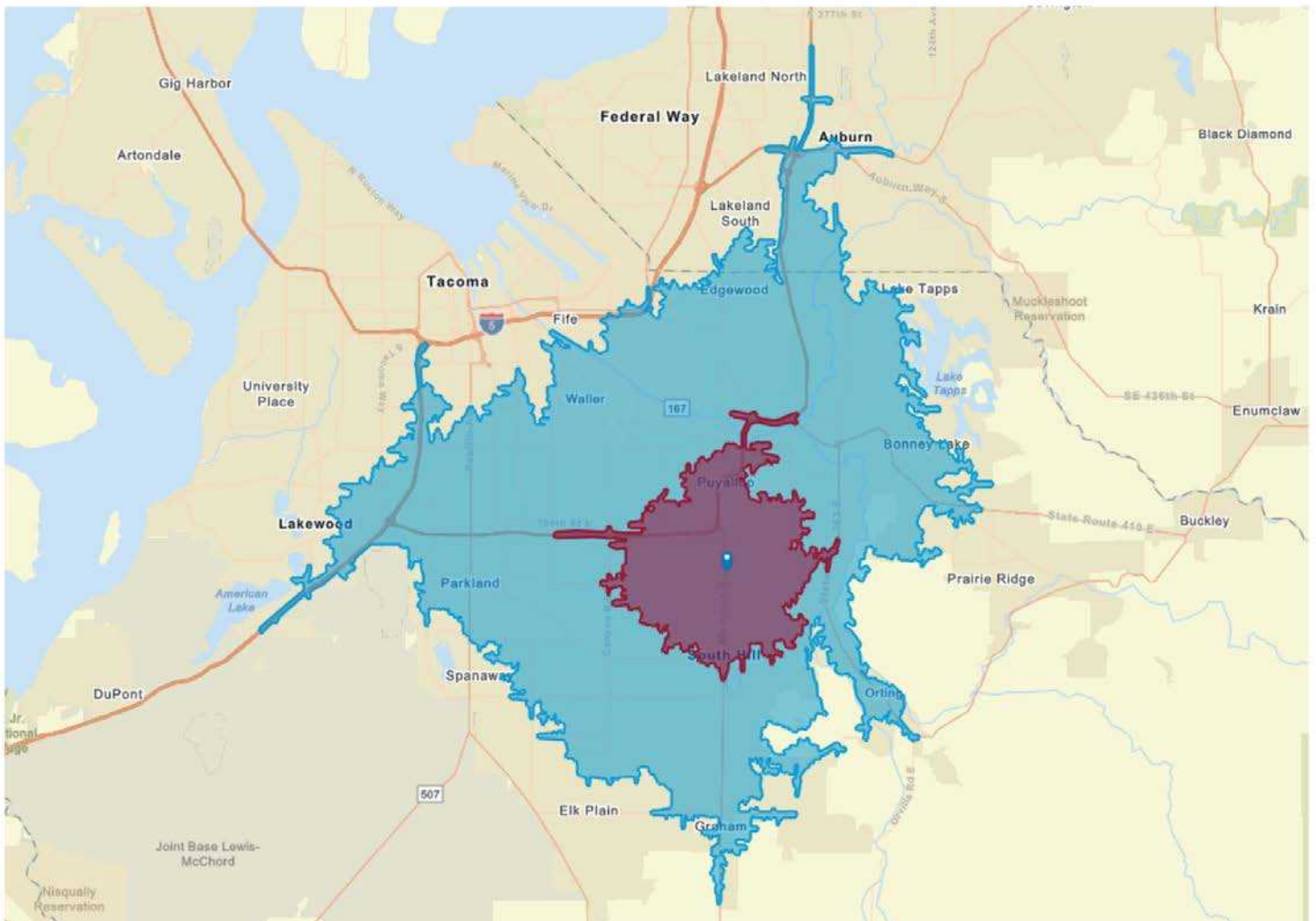


COMMERCIAL REAL ESTATE SERVICES

POPULATION	1 MILE	3 MILES	5 MILES
TOTAL POPULATION	14,319	88,169	198,440
AVERAGE AGE	39	39	38

HOUSEHOLDS & INCOME	1 MILE	3 MILES	5 MILES
TOTAL HOUSEHOLDS	5,736	31,867	70,378
# OF PERSONS PER HH	2.4	2.8	2.8
AVERAGE HH INCOME	\$101,970	\$130,216	\$132,241

DRIVE TIMES



CONTACT

Simran Kaur

253.238.2844

skaur@lee-associates.com

Vanessa Herzog, SIOR, CCIM

253.444.3020

vherzog@lee-associates.com

Justin Froelich

253.238.0047

jfroelich@lee-associates.com

We obtained the information above from sources we believe to be reliable. However, we have not verified its accuracy and make no guarantee, warranty or representation about it. It is submitted subject to the possibility of errors, omissions, change of price, rental or other conditions, prior sale, lease or financing, or withdrawal without notice. We include projections, opinions, assumptions or estimates for example only, and they may not represent current or future performance of the property. You and your tax and legal advisors should conduct your own investigation of the property and transaction.