

FOR LEASE

High-Exposure
Industrial-Retail on
Mercer Street.

Mercer Building

1167 Mercer Street, Seattle, WA 98109

*Flexible Two-Level Industrial with
Unmatched Traffic Exposure*

PROPERTY HIGHLIGHTS

- + 9,835 TOTAL AREA WITH 5,520 RSF UPPER LEVEL AND 4,315 RSF LOWER LEVEL
- + DOCK AND GRADE LEVEL LOADING
- + TRAFFIC COUNT: 50,000 VEHICLES PER DAY
- + SECURED FENCED PARKING/YARD
- + LEASE RATE: \$1.85 PSF/MO, NNN



THE INFORMATION CONTAINED HEREIN HAS BEEN GIVEN TO US BY THE OWNER OF THE PROPERTY OR OTHER SOURCES WE DEEM RELIABLE. WE HAVE NO REASON TO DOUBT ITS ACCURACY, BUT WE DO NOT GUARANTEE IT. ALL INFORMATION SHOULD BE VERIFIED PRIOR TO PURCHASE OR LEASE.

TOTAL AREA

9,835 SF

UPPER LEVEL

5,520 RSF

LOWER LEVEL

4,315 RSF

PRICE/SF/MONTH

\$1.85

TYPE

NNN

BOB SWAIN, CCIM

Partner

+1 425 586 5622

bswain@nai-pp.com

MATTHEW HOPKINS

Associate

+1 425 586 5635

mhopkins@nai-pp.com

Retailer Map

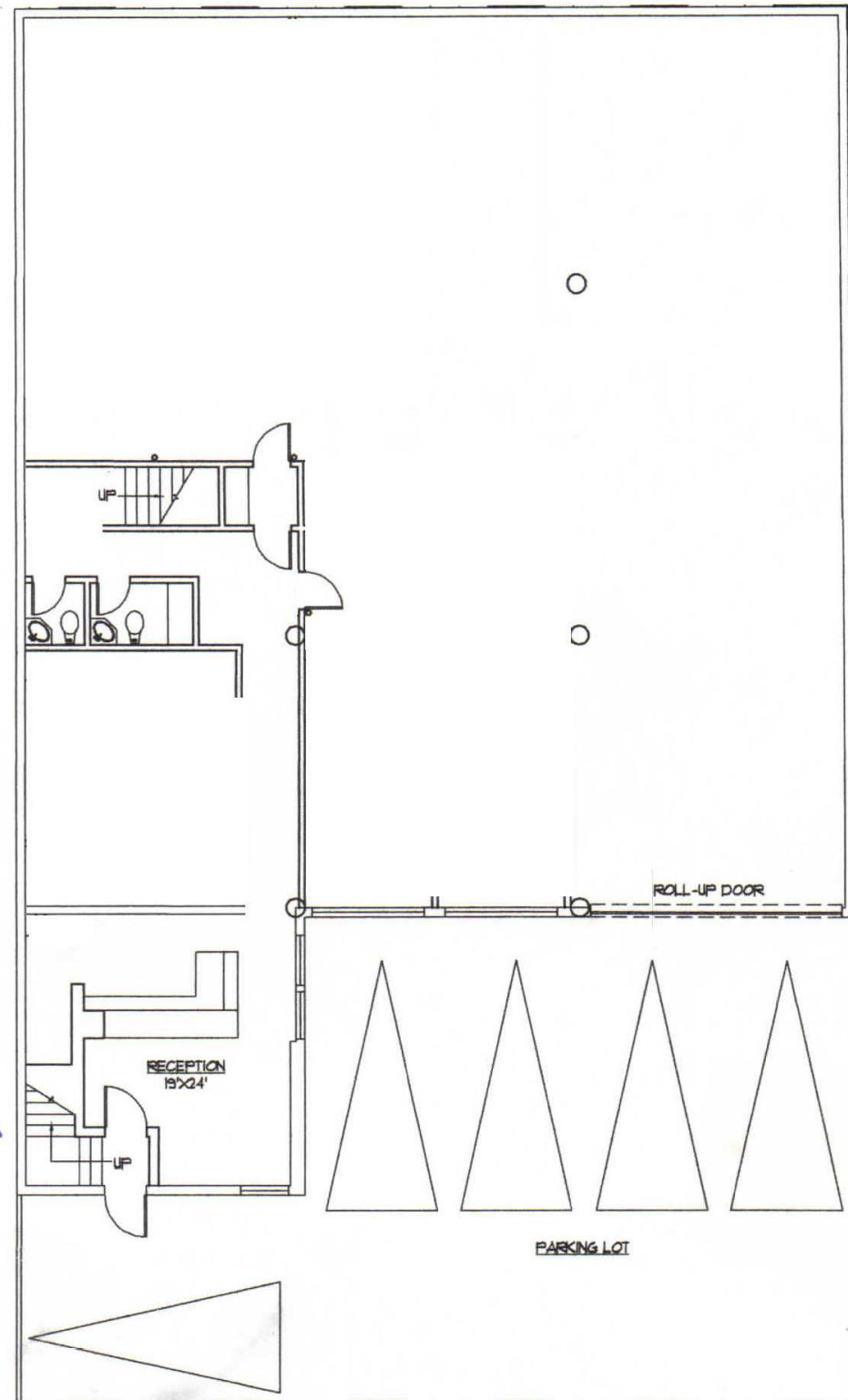


BOB SWAIN, CCIM
Partner
+1 425 586 5622
bswain@nai-ppsp.com

MATTHEW HOPKINS
Associate
+1 425 586 5635
mhopkins@nai-ppsp.com



First Floor Plan - 4,315 SF

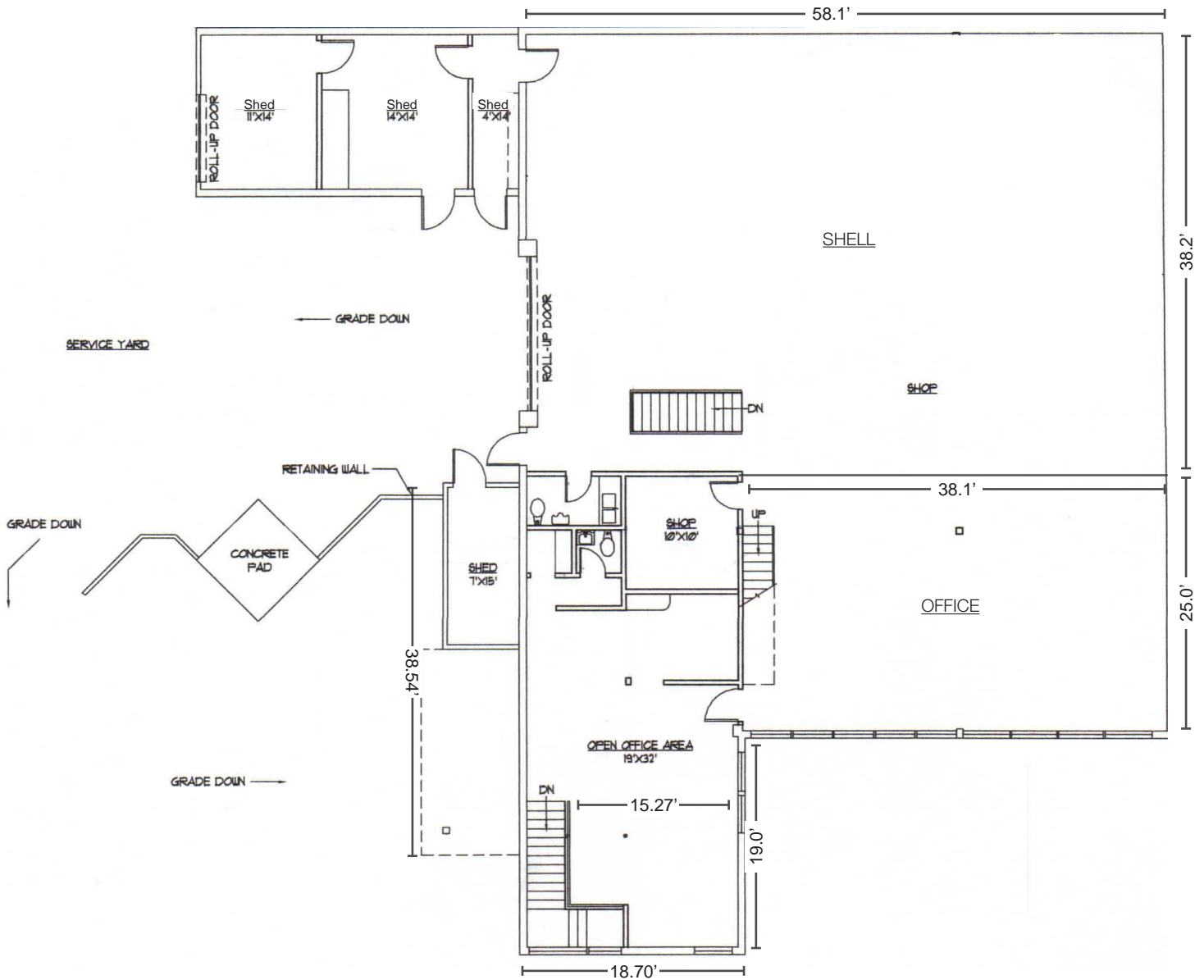


BOB SWAIN, CCIM
Partner
+1 425 586 5622
bswain@nai-pp.com

MATTHEW HOPKINS
Associate
+1 425 586 5635
mhopkins@nai-pp.com



Second Floor Plan - 5,520 SF



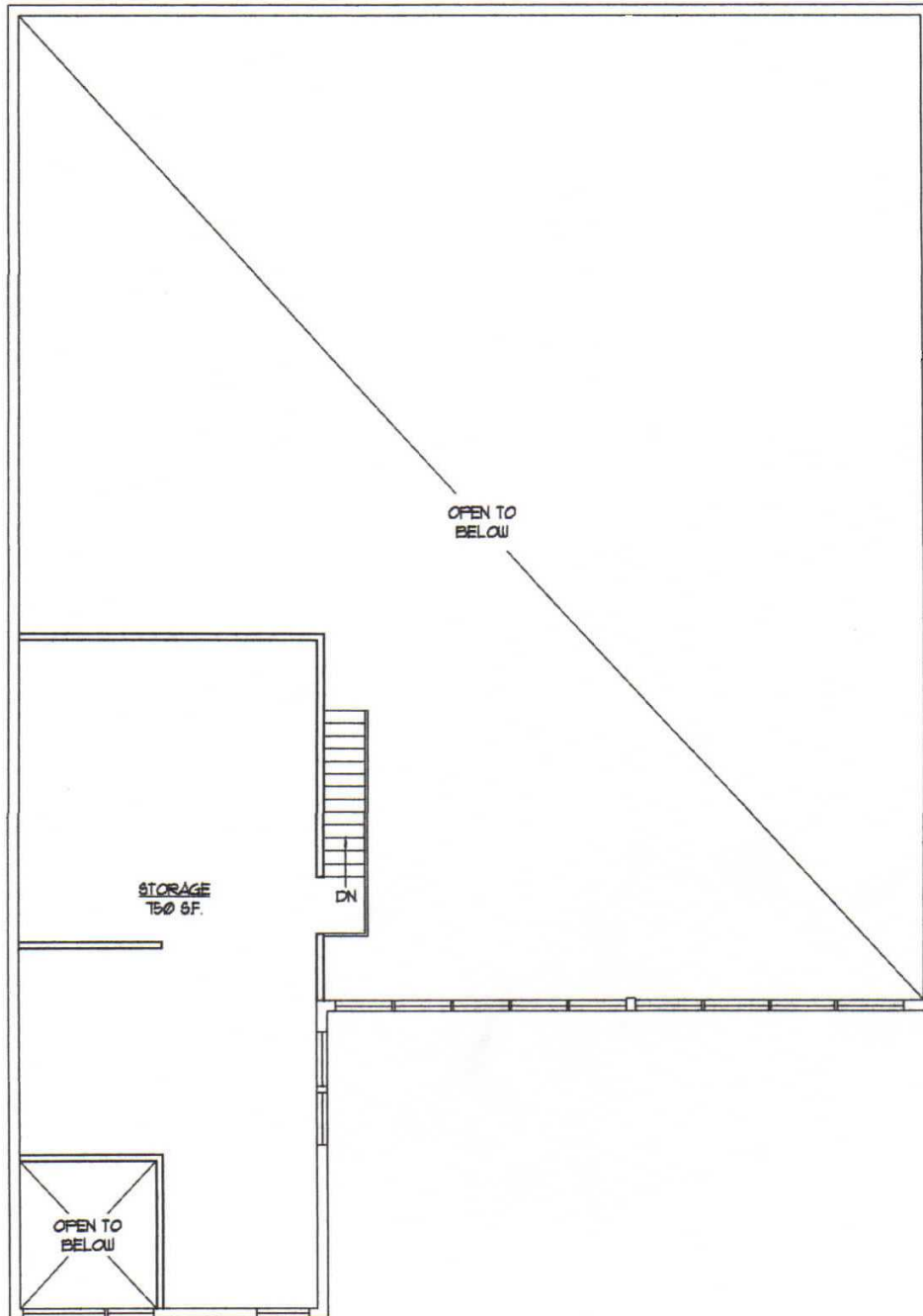
Total	Shell/Office	Storage
5,520 SF	4,365 SF	750 SF mezzanine 405 SF sheds

BOB SWAIN, CCIM
 Partner
 +1 425 586 5622
 bswain@nai-psp.com

MATTHEW HOPKINS
 Associate
 +1 425 586 5635
 mhopkins@nai-psp.com



Mezzanine Floor Plan - 750 SF



BOB SWAIN, CCIM
Partner
+1 425 586 5622
bswain@nai-psp.com

MATTHEW HOPKINS
Associate
+1 425 586 5635
mhopkins@nai-psp.com



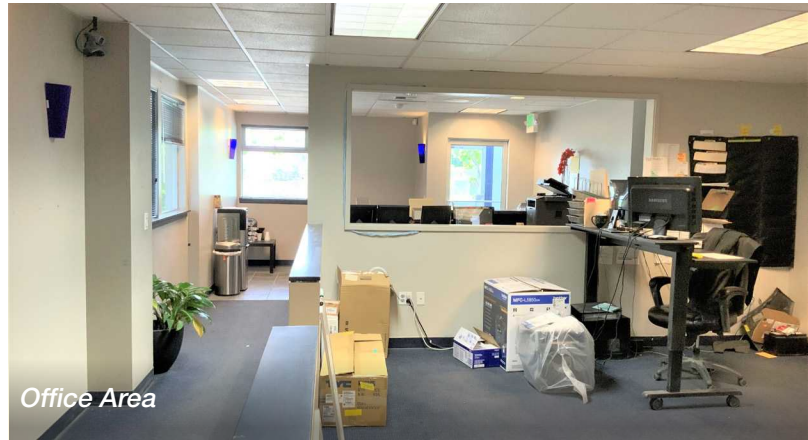
*Mercer Building
Property Photos*



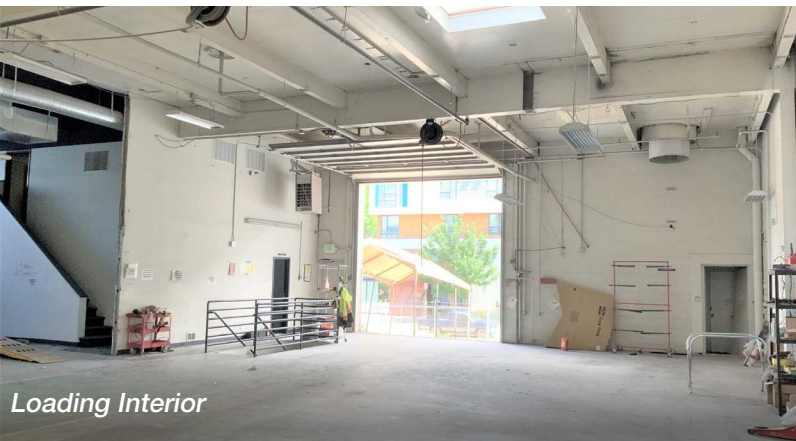
Building Exterior



Loading Exterior



Office Area



Loading Interior



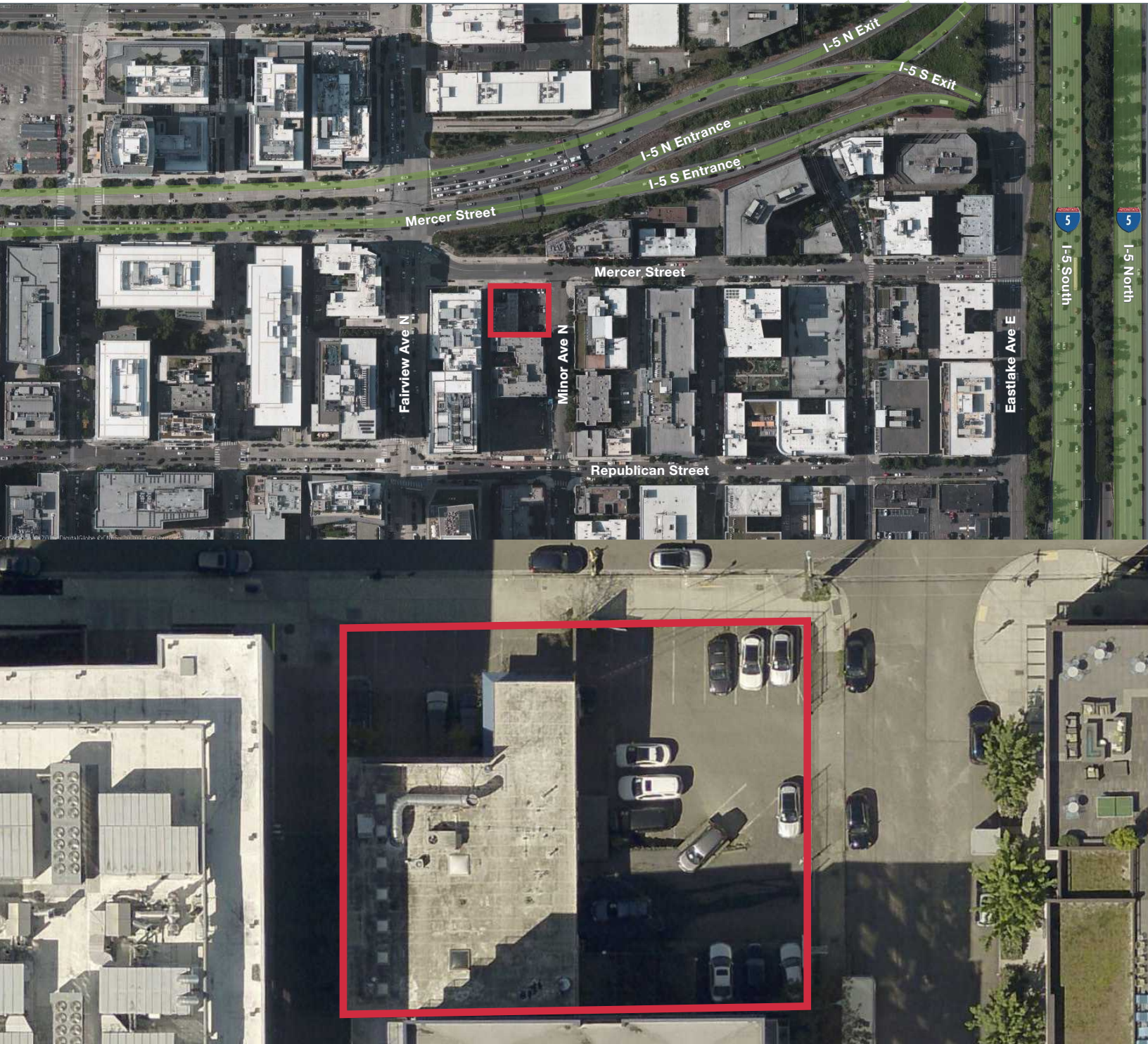
Building Interior

BOB SWAIN, CCIM
Partner
+1 425 586 5622
bswain@nai-psp.com

MATTHEW HOPKINS
Associate
+1 425 586 5635
mhopkins@nai-psp.com



Aerial Overview



BOB SWAIN, CCIM
Partner
+1 425 586 5622
bswain@nai-pp.com

MATTHEW HOPKINS
Associate
+1 425 586 5635
mhopkins@nai-pp.com

