



For Sublease

Jordan Creek Office Center

5825 221st Pl SE, Issaquah, WA 98027

Plug & Play Office For Sublease

Available Space and Features

- Suite 202: 2,835 RSF
- Furniture available
- Full kitchen
- Lots of surface parking spaces
- Located in the I-90 Corridor of Issaquah, offering quick access to Interstate 90 and nearby retail/amenities.
- Master lease expires 12/31/2028
- Asking Price: \$21.00/SF + NNN

Morgan Burbridge
Senior Vice President
morgan.burbridge@colliers.com
+1 425 453 3118

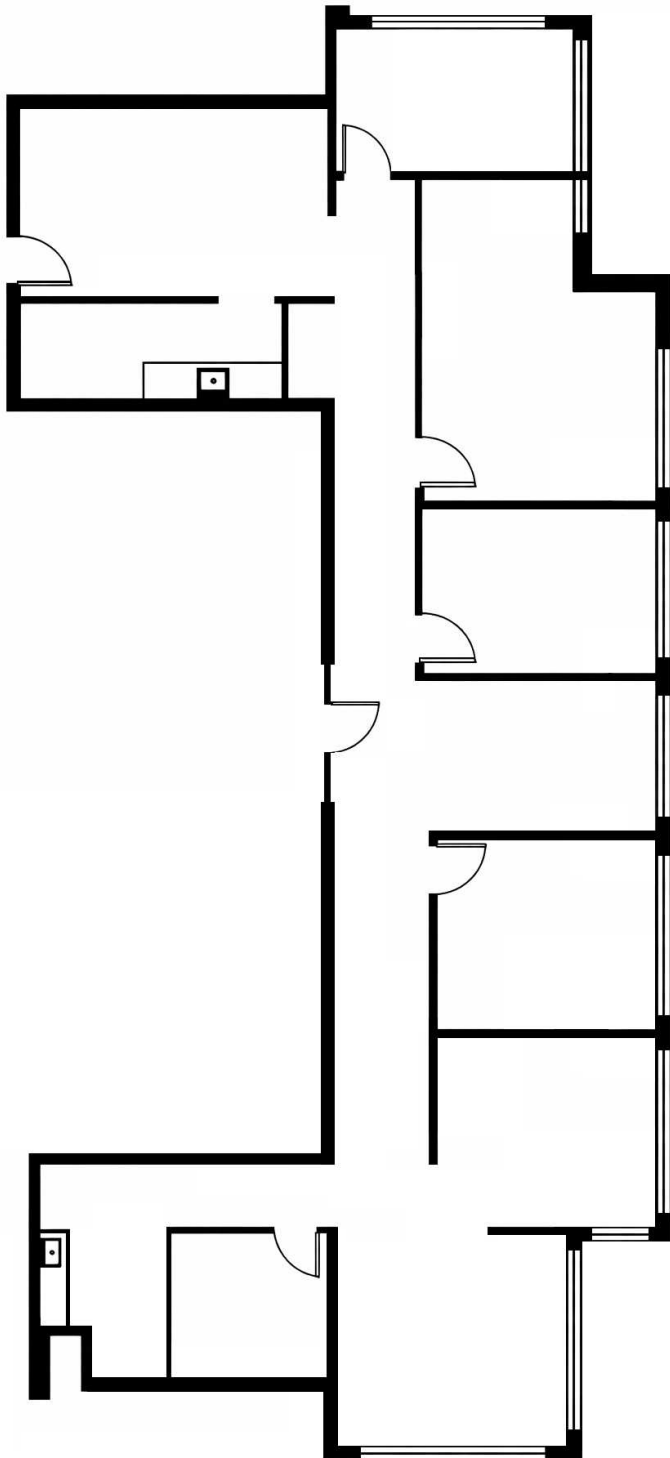


Colliers Bellevue
11225 SE 6th Street, Suite 240
Bellevue, WA 98004
colliers.com

For Sublease

Jordan Creek Office

5825 221st Place SE, Issaquah, WA 98029



Colliers Bellevue
11225 SE 6th Street, Suite 240
Bellevue, WA 98004
colliers.com

Morgan Burbridge
Senior Vice President
morgan.burbridge@colliers.com
+1 425 453 3118

For Sublease

Jordan Creek Office
5825 221st Place SE, Issaquah, WA 98029



Colliers Bellevue
11225 SE 6th Street, Suite 240
Bellevue, WA 98004
colliers.com

Morgan Burbridge
Senior Vice President
morgan.burbridge@colliers.com
+1 425 453 3118

This document/email has been prepared by Colliers for advertising and general information only. Colliers makes no guarantees, representations or warranties of any kind, expressed or implied, regarding the information including, but not limited to, warranties of content, accuracy and reliability. Any interested party should undertake their own inquiries as to the accuracy of the information. Colliers excludes unequivocally all inferred or implied terms, conditions and warranties arising out of this document and excludes all liability for loss and damages arising there from. This publication is the copyrighted property of Colliers and /or its licensor(s). © 2026. All rights reserved. This communication is not intended to cause or induce breach of an existing listing agreement.