



BELLEVUE TECH CENTER

NE 24th St & 156th Ave NE

ACTIVE AVAILABILITIES

BUILDING	SUITE(S)	RSF	ADDRESS
2002	100	9,979 RSF	2002 158th Ct NE
2002	200	9,984 RSF	2002 158th Ct NE
2010	220	1,668 RSF	2010 156th Ave NE
2010	300	8,865 RSF	2010 156th Ave NE



For leasing information:

JASON BLOOM | 425.450.1102 | jason.bloom@kidder.com

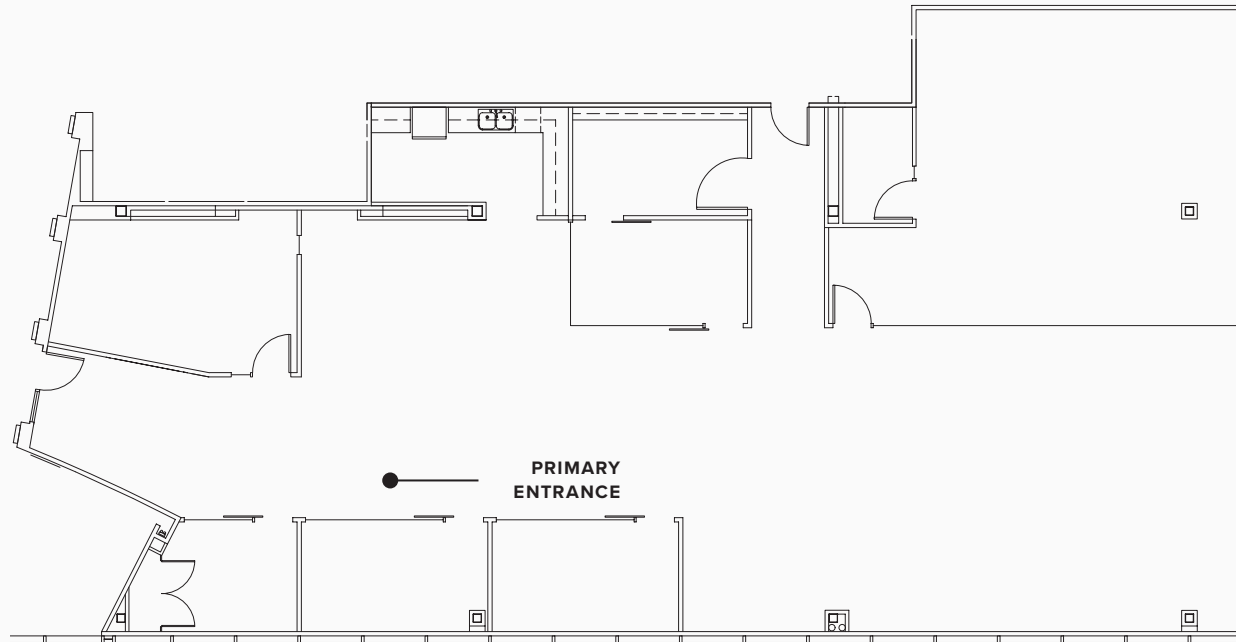
© 2026 • This information supplied herein is from sources we deem reliable. It is provided without any representation, warranty, or guarantee, expressed or implied as to its accuracy. Prospective Buyer or Tenant should conduct an independent investigation and verification of all matters deemed to be material, including, but not limited to, statements of income and expenses. Consult your attorney, accountant, or other professional advisor.



BELLEVUE TECH CENTER

SUITE 100
9,979 RSF

BLDG
2002



KEY PLAN

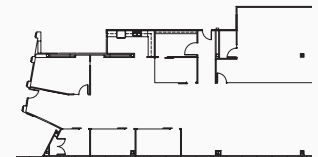


2002 158TH CT NE
BELLEVUE, WA 98008

For leasing information:

JASON BLOOM | 425.450.1102 | jason.bloom@kidder.com

DRAWING NOT TO SCALE



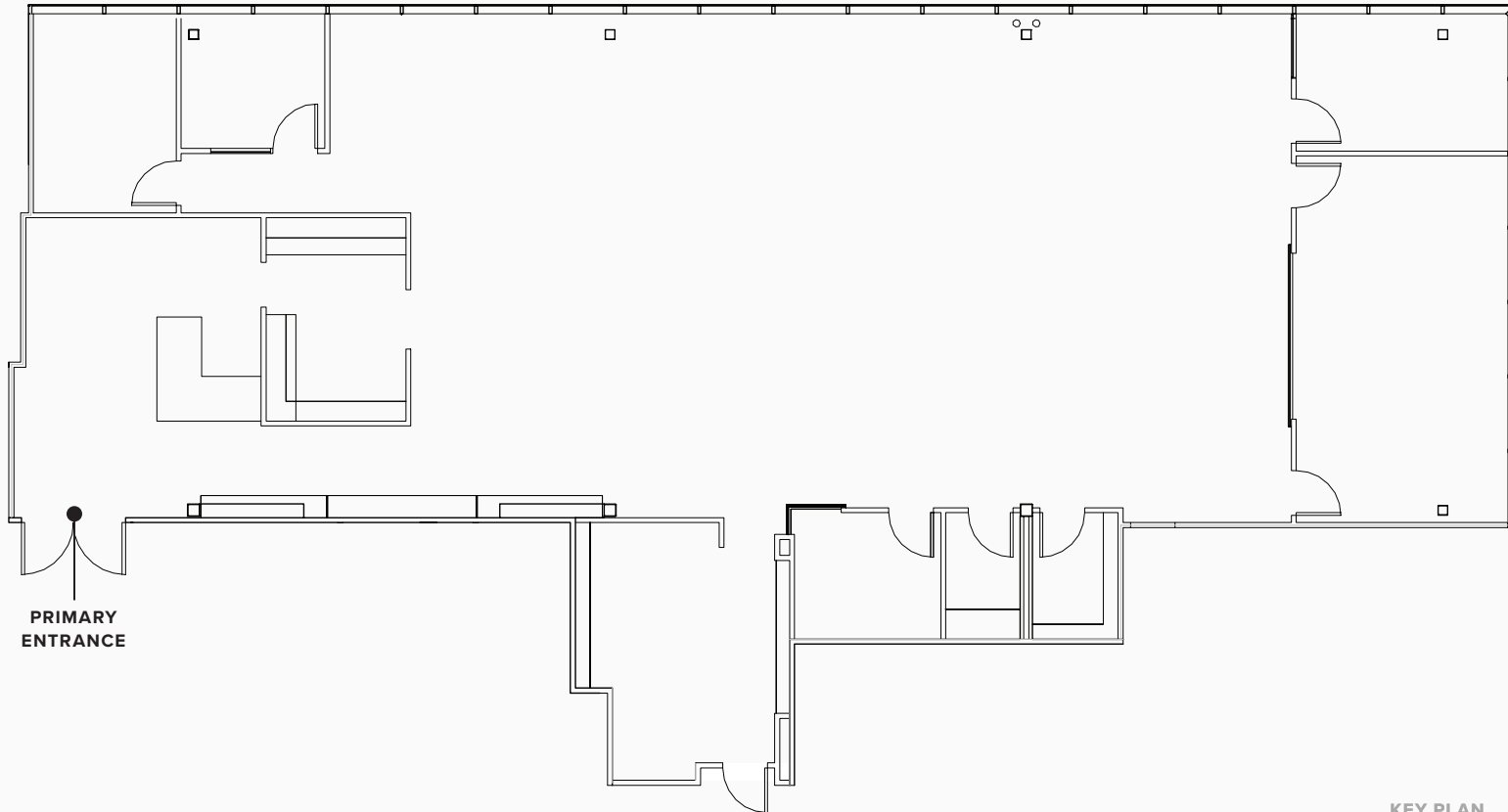
© 2026 • This information supplied herein is from sources we deem reliable. It is provided without any representation, warranty, or guarantee, expressed or implied as to its accuracy. Prospective Buyer or Tenant should conduct an independent investigation and verification of all matters deemed to be material, including, but not limited to, statements of income and expenses. Consult your attorney, accountant, or other professional advisor.

km Kidder
Mathews

**BELLEVUE
TECH CENTER**

SUITE 200
9,984 RSF

**BLDG
2002**



**PRIMARY
ENTRANCE**

KEY PLAN

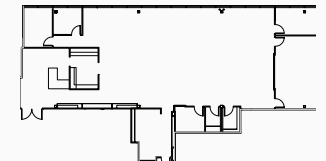


**2002 158TH CT NE
BELLEVUE, WA 98008**

For leasing information:

JASON BLOOM | 425.450.1102 | jason.bloom@kidder.com

DRAWING NOT TO SCALE



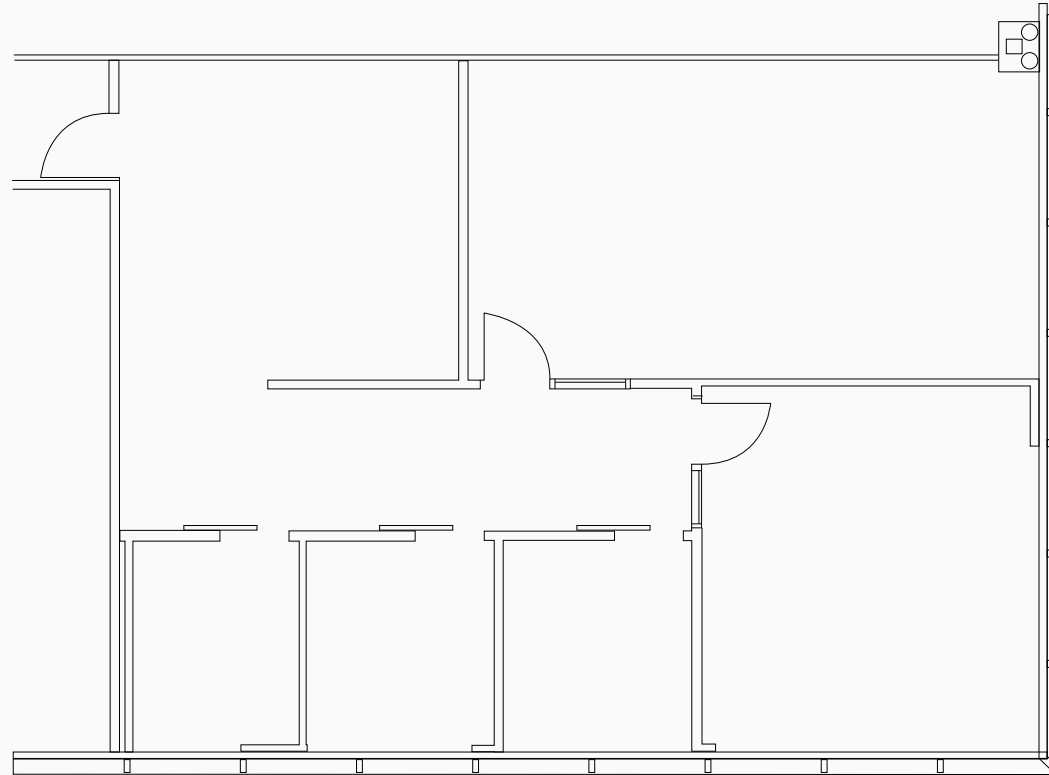
© 2026 • This information supplied herein is from sources we deem reliable. It is provided without any representation, warranty, or guarantee, expressed or implied as to its accuracy. Prospective Buyer or Tenant should conduct an independent investigation and verification of all matters deemed to be material, including, but not limited to, statements of income and expenses. Consult your attorney, accountant, or other professional advisor.



BELLEVUE TECH CENTER

SUITE 220
1,668 RSF

BLDG
2010

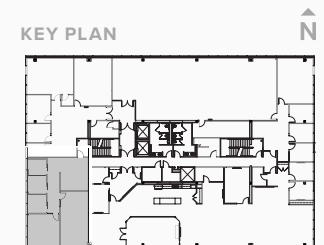


2010 156TH AVE NE
BELLEVUE, WA 98008

For leasing information:

JASON BLOOM | 425.450.1102 | jason.bloom@kidder.com

DRAWING NOT TO SCALE



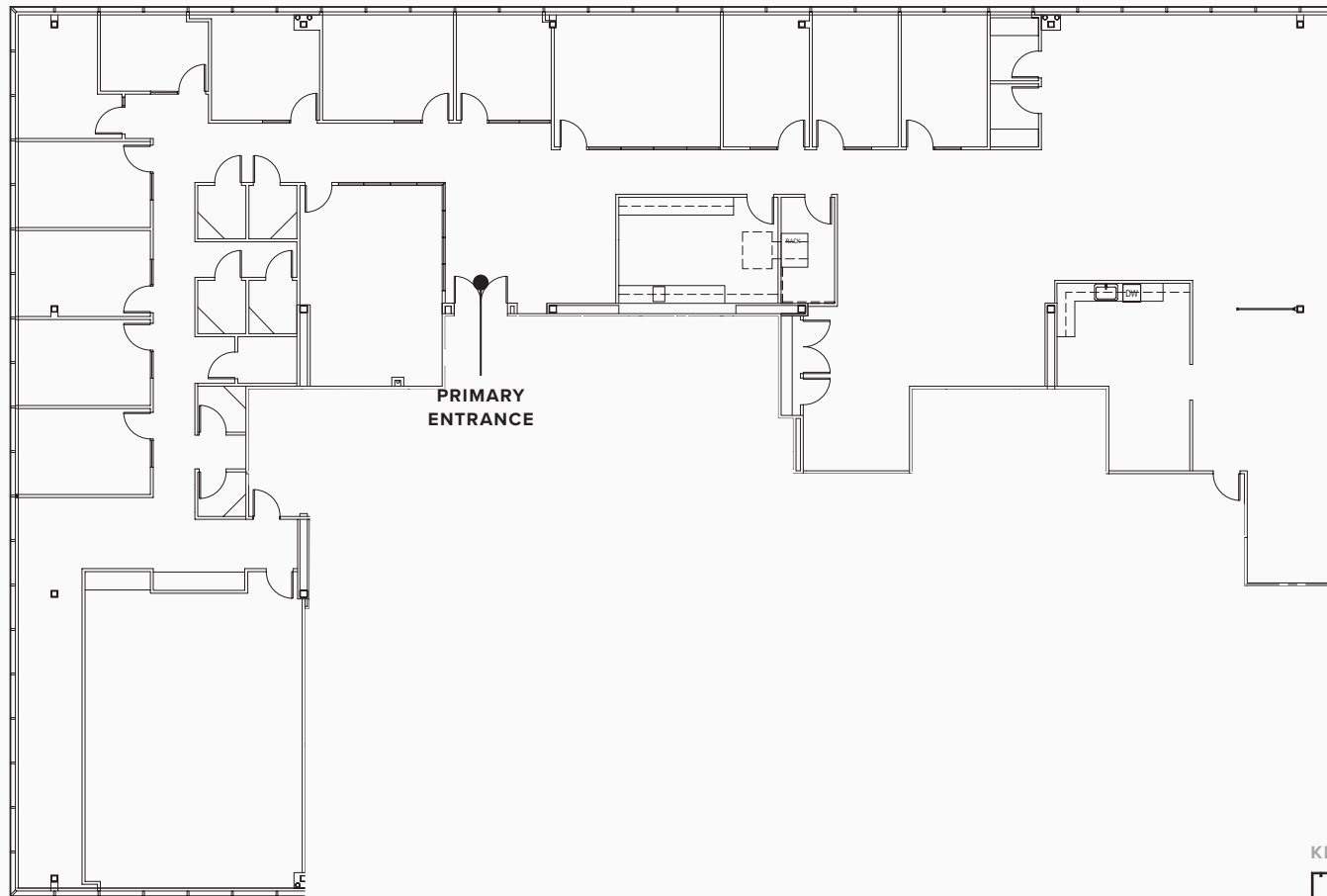
© 2026 • This information supplied herein is from sources we deem reliable. It is provided without any representation, warranty, or guarantee, expressed or implied as to its accuracy. Prospective Buyer or Tenant should conduct an independent investigation and verification of all matters deemed to be material, including, but not limited to, statements of income and expenses. Consult your attorney, accountant, or other professional advisor.

km Kidder
Mathews

BELLEVUE TECH CENTER

SUITE 300
8,865 RSF

BLDG
2010

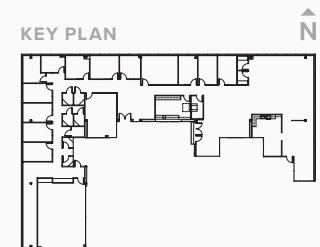


2010 156TH AVE NE
BELLEVUE, WA 98008

For leasing information:

JASON BLOOM | 425.450.1102 | jason.bloom@kidder.com

DRAWING NOT TO SCALE



© 2026 • This information supplied herein is from sources we deem reliable. It is provided without any representation, warranty, or guarantee, expressed or implied as to its accuracy. Prospective Buyer or Tenant should conduct an independent investigation and verification of all matters deemed to be material, including, but not limited to, statements of income and expenses. Consult your attorney, accountant, or other professional advisor.

km Kidder
Mathews