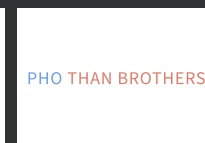


EPICENTER RETAIL

PCC-Anchored Retail Space Available in Fremont

JOHN CHELICO
425.450.2261
john.chelico@kidder.com

JOIN CURRENT TENANTS



Retail Space Available for Lease in Fremont!

Co-tenants include PCC Community Markets, ZoomCare, Pho Than Brothers, and 130+ apartments above

Vent shaft for hood

Located near numerous amenities and major employers, including Adobe and PATH

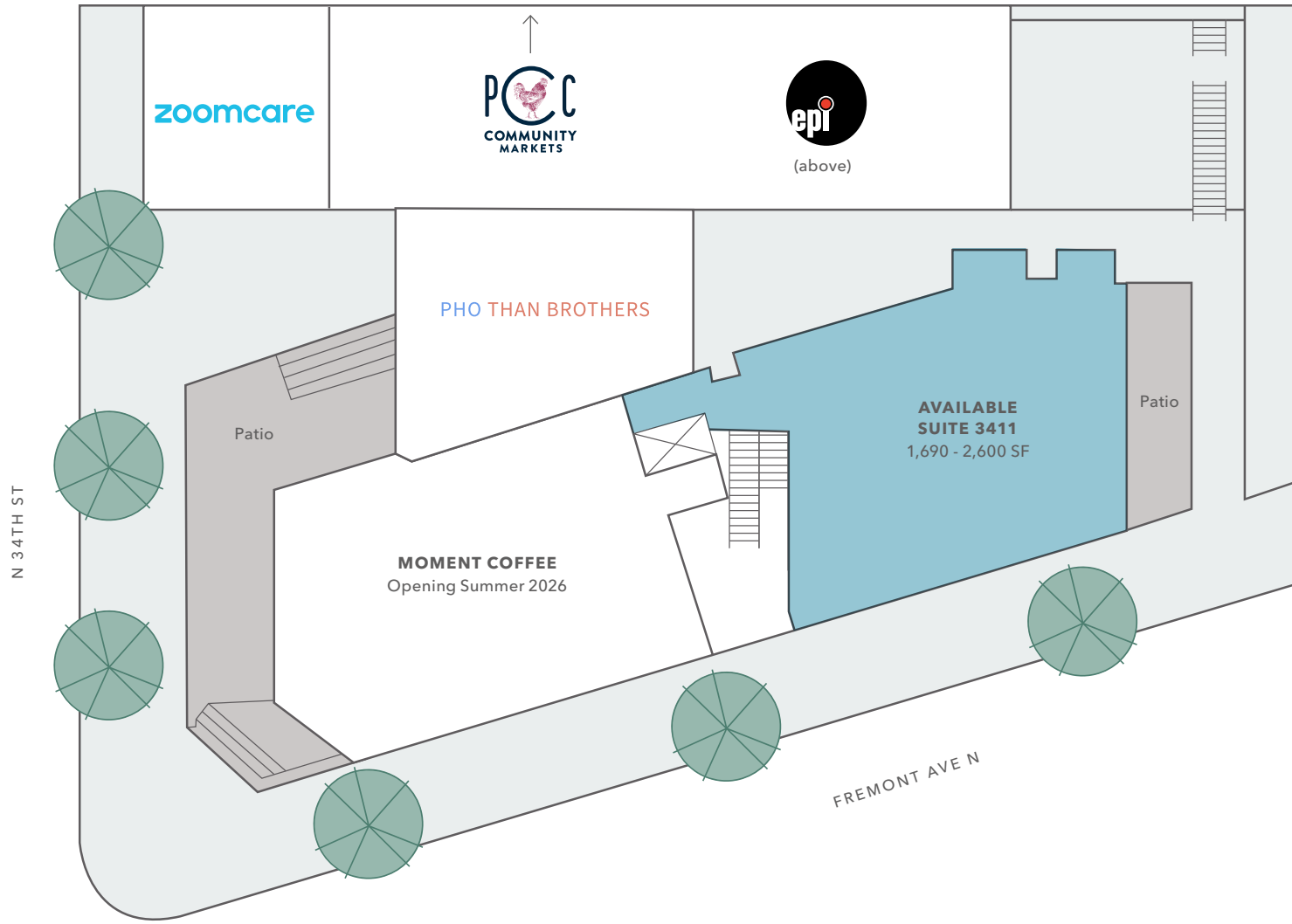
Garage parking available for all retail customers (first 90 minutes free of charge)

1,690 - 2,600 SF

3411 FREMONT AVE N



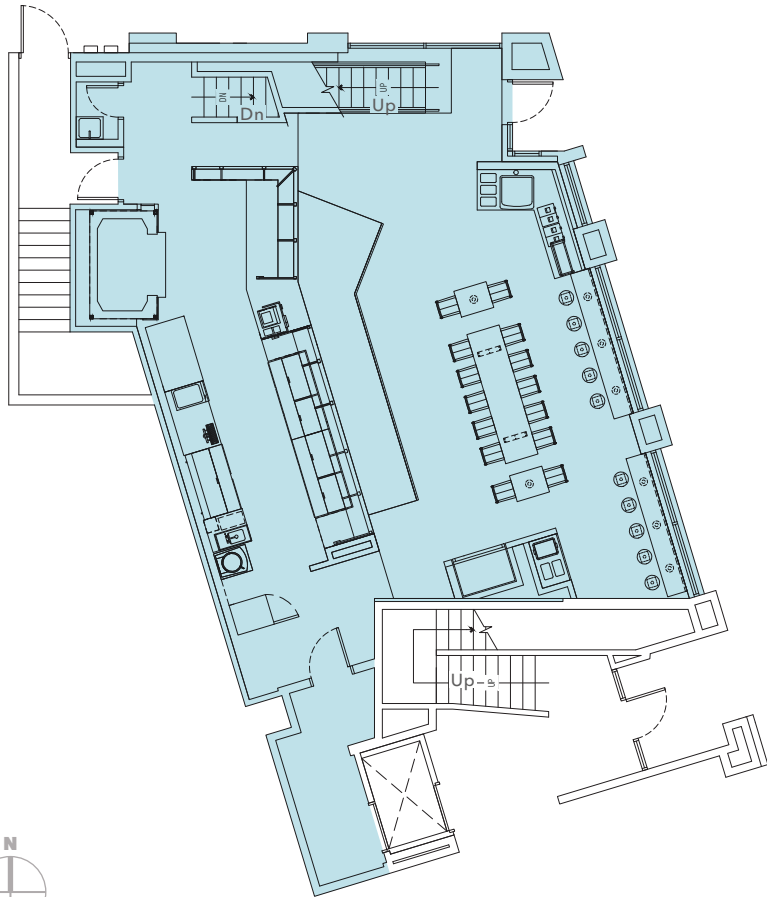
SITE PLAN



SUITE 3411 FLOOR PLAN

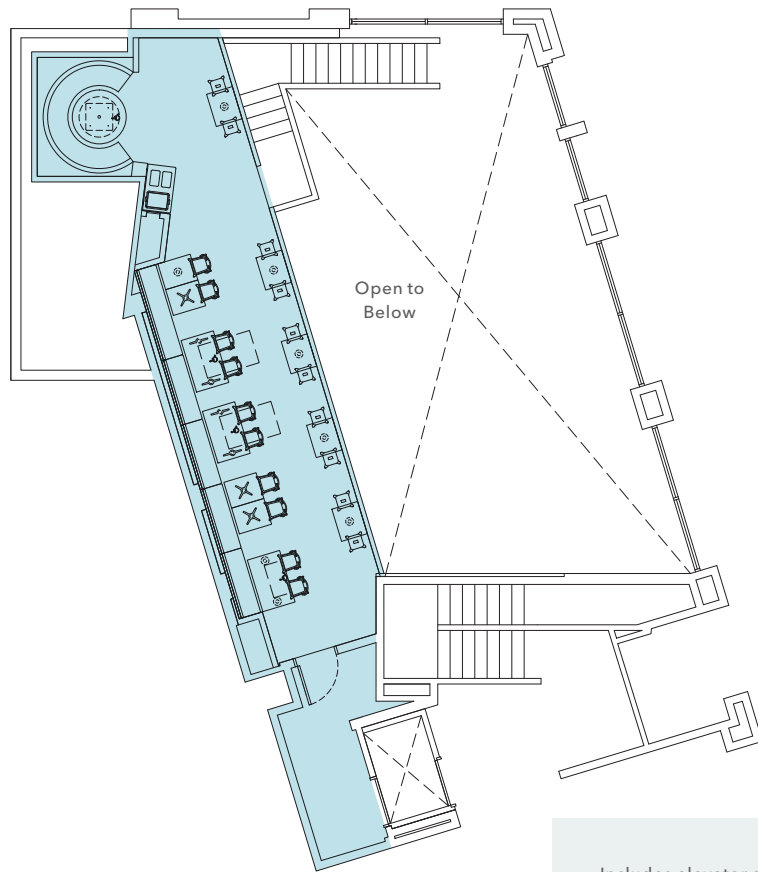
1,690 SF

STREET LEVEL | DINING/KITCHEN



639 SF

MEZZANINE | DINING



Includes elevator and 250 SF patio.

EPICENTER RETAIL







EPICENTER RETAIL

*For more information on
this property, please contact*

JOHN CHELICO
425.450.2261
john.chelico@kidder.com

KIDDER.COM

This information supplied herein is from sources we deem reliable. It is provided without any representation, warranty, or guarantee, expressed or implied as to its accuracy. Prospective Buyer or Tenant should conduct an independent investigation and verification of all matters deemed to be material, including, but not limited to, statements of income and expenses. Consult your attorney, accountant, or other professional advisor.

km Kidder
Mathews