

FOR LEASE

**\$15.00 SF/YR**  
**NNN \$3.85 PSF**

**Unit 101 - 1800 SF**



# MK BUSINESS PARK

2225 N Molter Rd

Liberty Lake, WA 99019

**Exclusively listed by:**

Bob Spooner  
Senior Commercial and Leasing Manager  
509.344.4903 | bob.spooner@g-b.com



# Available Space – 2225 N Molter Rd



SPACE	RATE	SIZE	AVAILABLE
UNIT 101	\$15.00 SF/YR NNN	1,800 SF	NOW



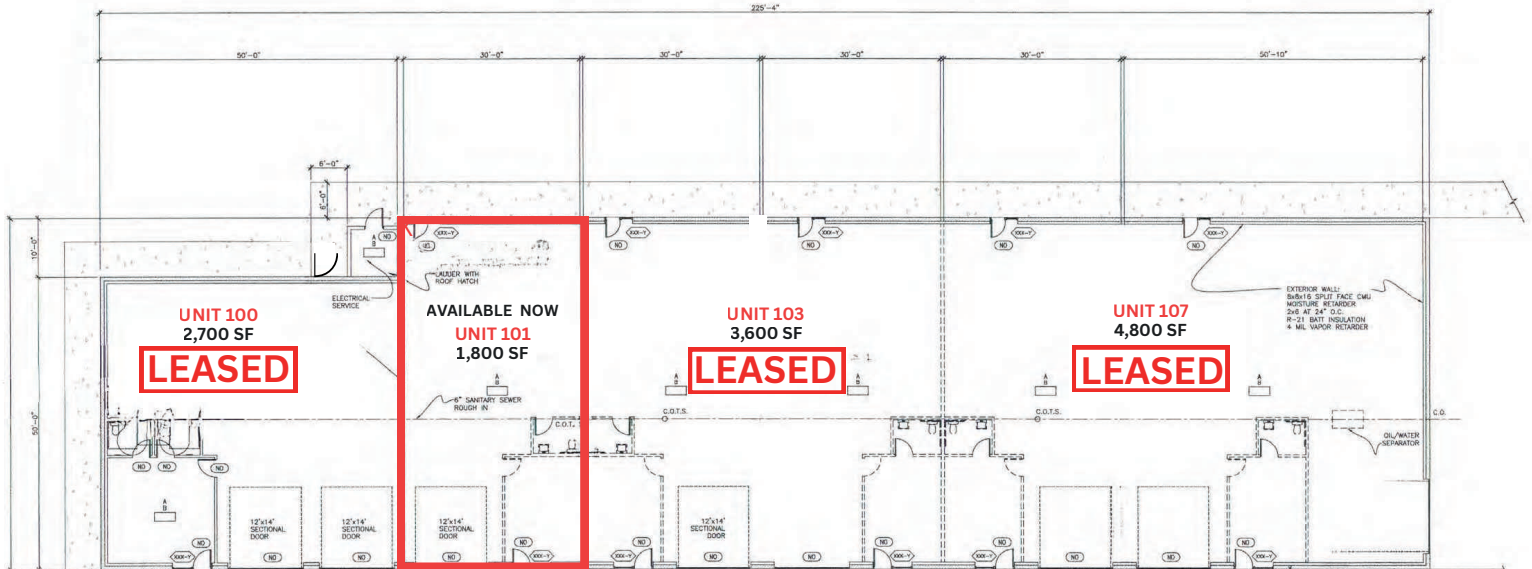
**Bonus Loft Space at  
No Additional Cost**

SPACE	RATE
UNIT 101	282 SF

Bob Spooner  
Senior Commercial and Leasing Manager  
509.344.4903 | bob.spooner@g-b.com



# MK Business Park



Overhead door dimensions: 13' wide x 14' tall

Ceiling height to trusses: 23' front sloping to 20' rear

## Highlights



Zoned Light Industrial allowing for a wide variety of uses. <https://shorturl.at/b20Gp>



All units include built out restrooms with showers, office, lofts, and warehouse space

Bob Spooner  
Senior Commercial and Leasing Manager  
509.344.4903 | bob.spooner@g-b.com





Bob Spooner  
Senior Commercial and Leasing Manager  
509.344.4903 | bob.spooner@g-b.com





# AERIAL MAP

*General Warranty Disclaimer: G&B makes no warranties, representations, or guarantees as to Seller/Owner's supplied information or the Property itself. G&B disclaims all warranties (express and implied) as to the Property and Seller/Owner's statements/information about the Property. Buyer/Lessee shall not rely on Property information supplied by Seller/Owner or G&B. Buyer/Lessee shall conduct its own due diligence to verify any information and the Property's suitability for specific or general purposes. Copyright information G&B respects the intellectual property of others and its Digital Millennium Copyright Act.*

**Bob Spooner**  
Senior Commercial and Leasing Manager  
509.344.4903 | bob.spooner@g-b.com

