

FOR SALE OR LEASE

BUILDING A

12,000 TO 130,151 SF

TALL FIRS INDUSTRIAL PARK

A Panattoni Development

14621 AND 14719 170TH AVENUE EAST, BONNEY LAKE, WA



PANATTONI



NAI Puget Sound
Properties

David Douglas, SIOR, CCIM
Partner
+1 253 203 1326
ddouglas@nai-ppsp.com

Kyle Schipper, SIOR
Partner
+1 253 203 1320
kschipper@nai-ppsp.com

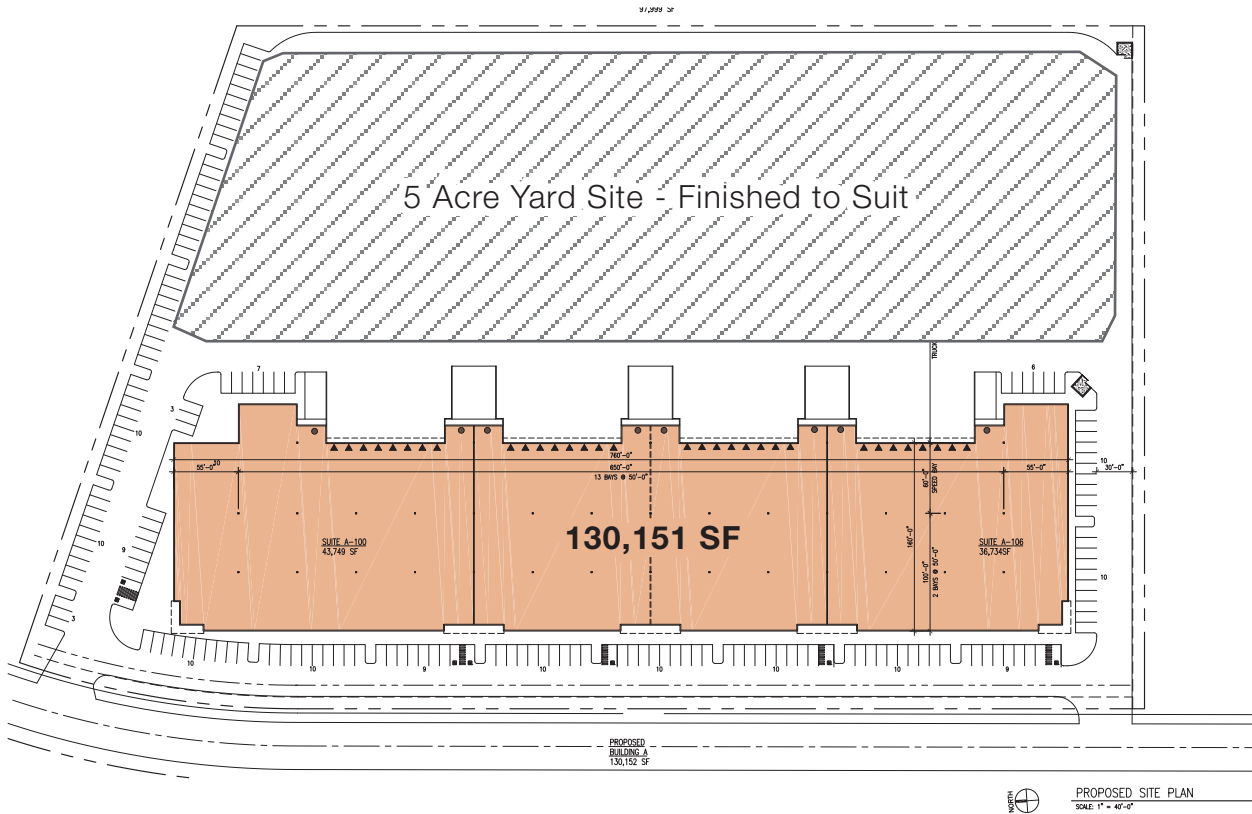
Arie Salomon, SIOR, CCIM
Principal
+1 425 586 5636
asalomon@nai-ppsp.com

Kent Channing
Partner
+1 425 586 5628
kchanning@nai-ppsp.com



THE INFORMATION CONTAINED HEREIN HAS BEEN GIVEN TO US BY THE OWNER OF THE PROPERTY OR OTHER SOURCES WE DEEM RELIABLE, WE HAVE NO REASON TO DOUBT ITS ACCURACY, BUT WE DO NOT GUARANTEE IT. ALL INFORMATION SHOULD BE VERIFIED PRIOR TO PURCHASE OR LEASE.

Tall Firs Industrial Park - Building A



HIGHLIGHTS



Class A Industrial Project



30' Clear Height
Dock High & Drive-In Loading



Mileage to major cities:
Sumner - 5.3
Puyallup - 5.6
Port of Tacoma - 15.1
Seattle - 36.4



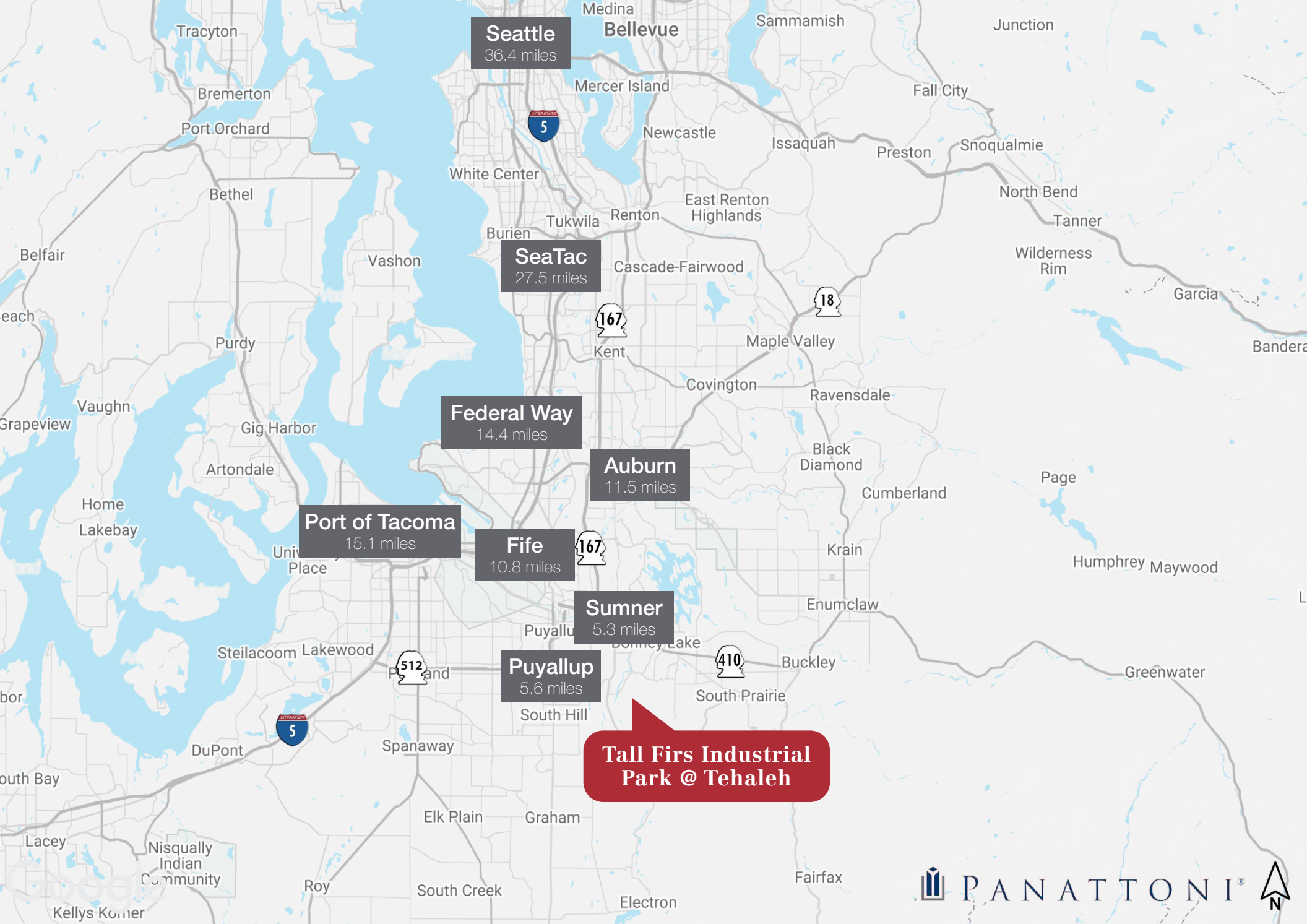
Available Now



Extension of Tehaleh Boulevard to
the Orting Highway (SR - 162) by 2026



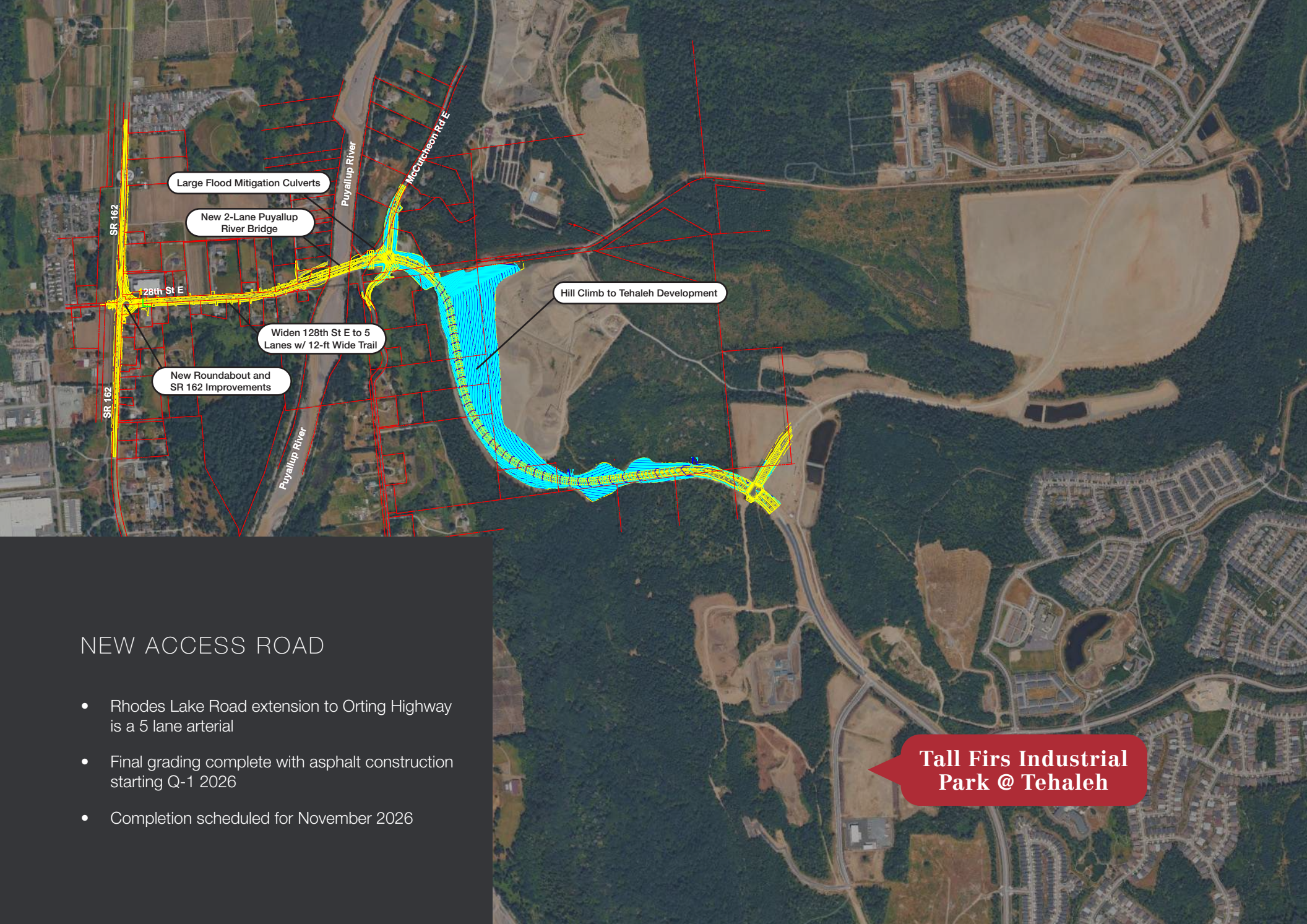
Tall Firs Industrial Park is located in the
4,700 acre planned community of Tehaleh
and features local amenities and CC&Rs to
protect value and enhance your long term
investment.



**Tall Firs Industrial
Park @ Tehaleh**



THE INFORMATION CONTAINED HEREIN HAS BEEN GIVEN TO US BY THE OWNER OF THE PROPERTY OR OTHER SOURCES WE DEEM RELIABLE, WE HAVE NO REASON TO DOUBT ITS ACCURACY, BUT WE DO NOT GUARANTEE IT. ALL INFORMATION SHOULD BE VERIFIED PRIOR TO PURCHASE OR LEASE.



NEW ACCESS ROAD

- Rhodes Lake Road extension to Orting Highway is a 5 lane arterial
- Final grading complete with asphalt construction starting Q-1 2026
- Completion scheduled for November 2026

Tall Firs Industrial Park @ Tehaleh