

# FOR SALE OR LEASE

BLDG A: 130,151 SF

BLDG B: BTS UP TO 86,092 SF

# TALL FIRS INDUSTRIAL PARK

## A Panattoni Development

14621 AND 14719 170TH AVENUE EAST, BONNEY LAKE, WA



**David Douglas, SIOR, CCIM**  
Partner  
+1 253 203 1326  
ddouglas@nai-psp.com

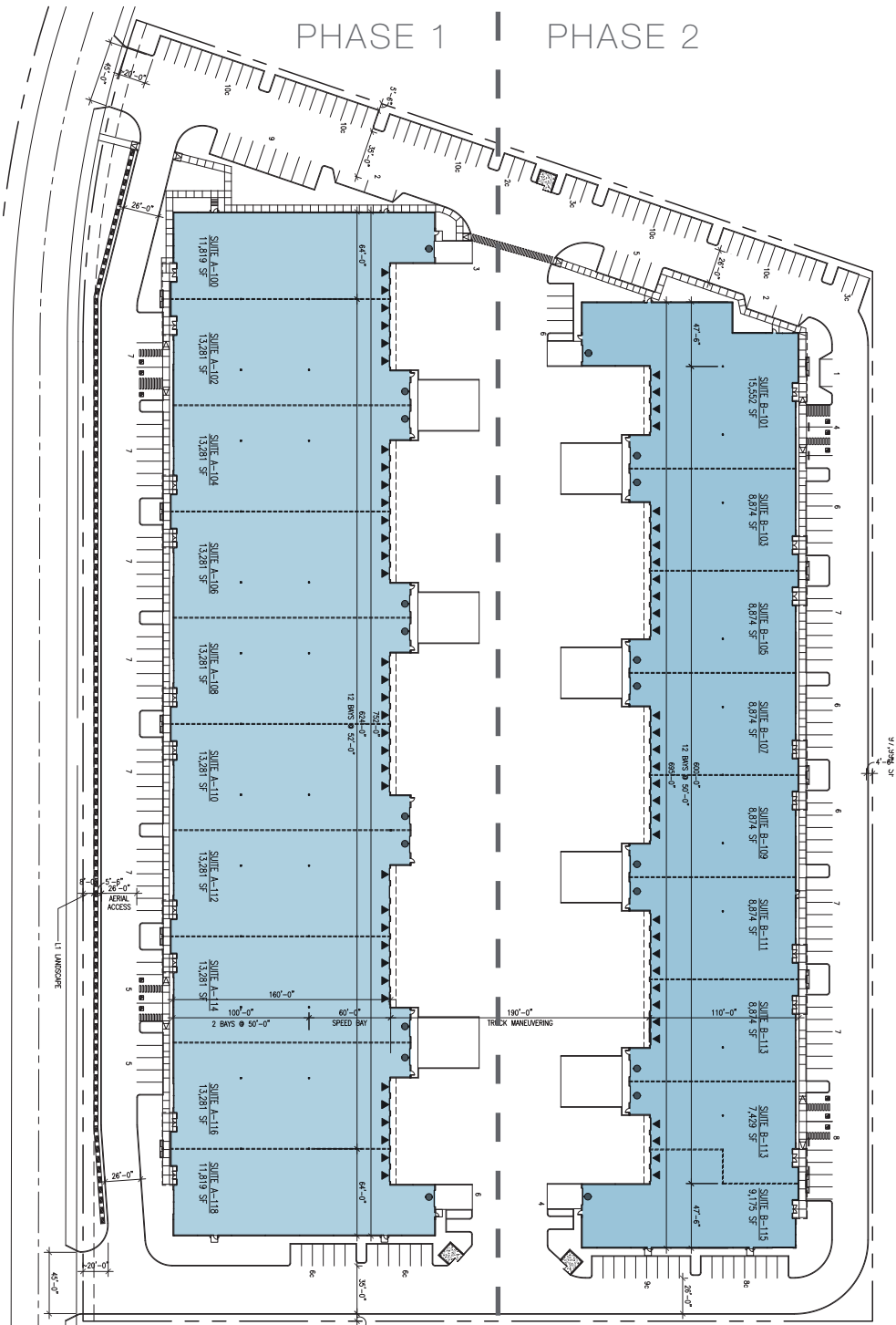
**Kyle Schipper, SIOR**  
Partner  
+1 253 203 1320  
kschipper@nai-psp.com

**Arie Salomon, SIOR, CCIM**  
Principal  
+1 425 586 5636  
asalomon@nai-psp.com


**Kent Channing**  
Partner  
+1 425 586 5628  
kchanning@nai-psp.com





THE INFORMATION CONTAINED HEREIN HAS BEEN GIVEN TO US BY THE OWNER OF THE PROPERTY OR OTHER SOURCES WE DEEM RELIABLE, WE HAVE NO REASON TO DOUBT ITS ACCURACY, BUT WE DO NOT GUARANTEE IT. ALL INFORMATION SHOULD BE VERIFIED PRIOR TO PURCHASE OR LEASE.





## HIGHLIGHTS


- 

216,243 Total SF (11.51 Acres)  
 Building A: 130,151 SF  
 Building B: 86,092 SF
- 


Flexible size configurations available for lease
- 

Class A industrial project
- 


30' Clear Height  
 Dock High & Drive-In Loading
- 

Fully entitled & graded, ready for construction
- 

Custom tenant improvements
- 

Mileage to major cities:  
 Sumner - 5.3  
 Puyallup - 5.6  
 Port of Tacoma - 15.1  
 Seattle - 36.4
- 

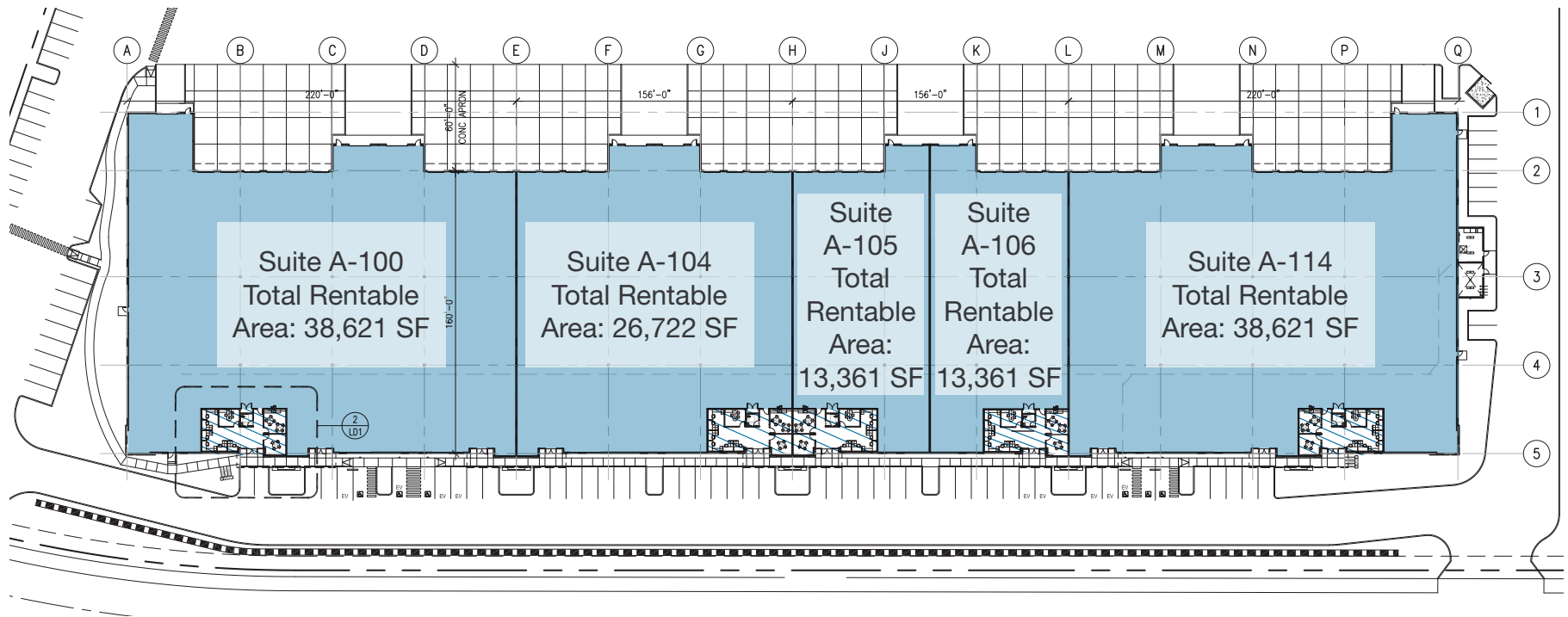
Q2 2025 delivery
- 

Extension of Tehaleh Boulevard to the Orting Highway (SR - 162) by 2026
- 

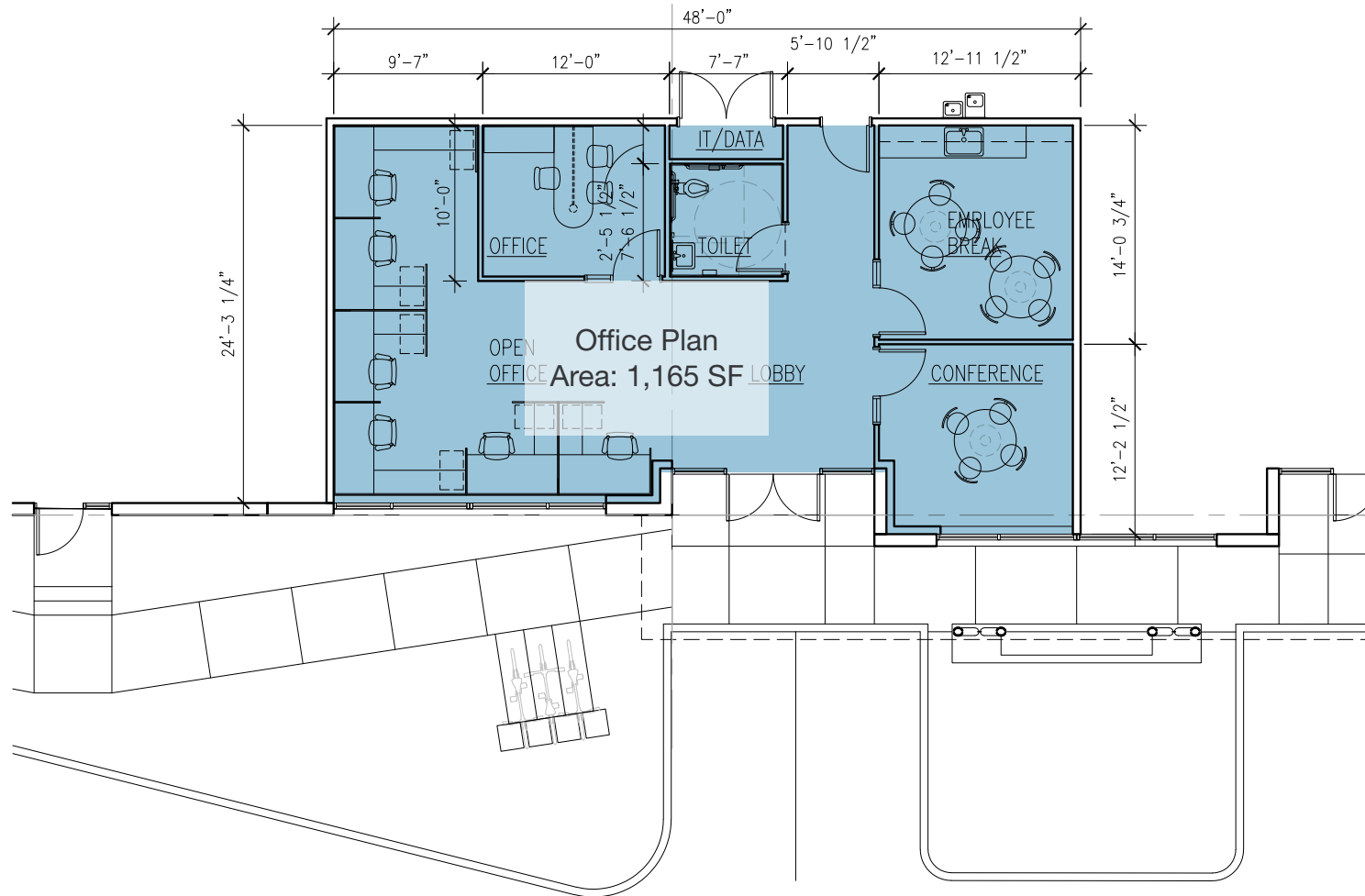
Tall Firs Industrial Park is located in the 4,700 acre planned community of Tehaleh and features local amenities and CC&Rs to protect value and enhance your long term investment.

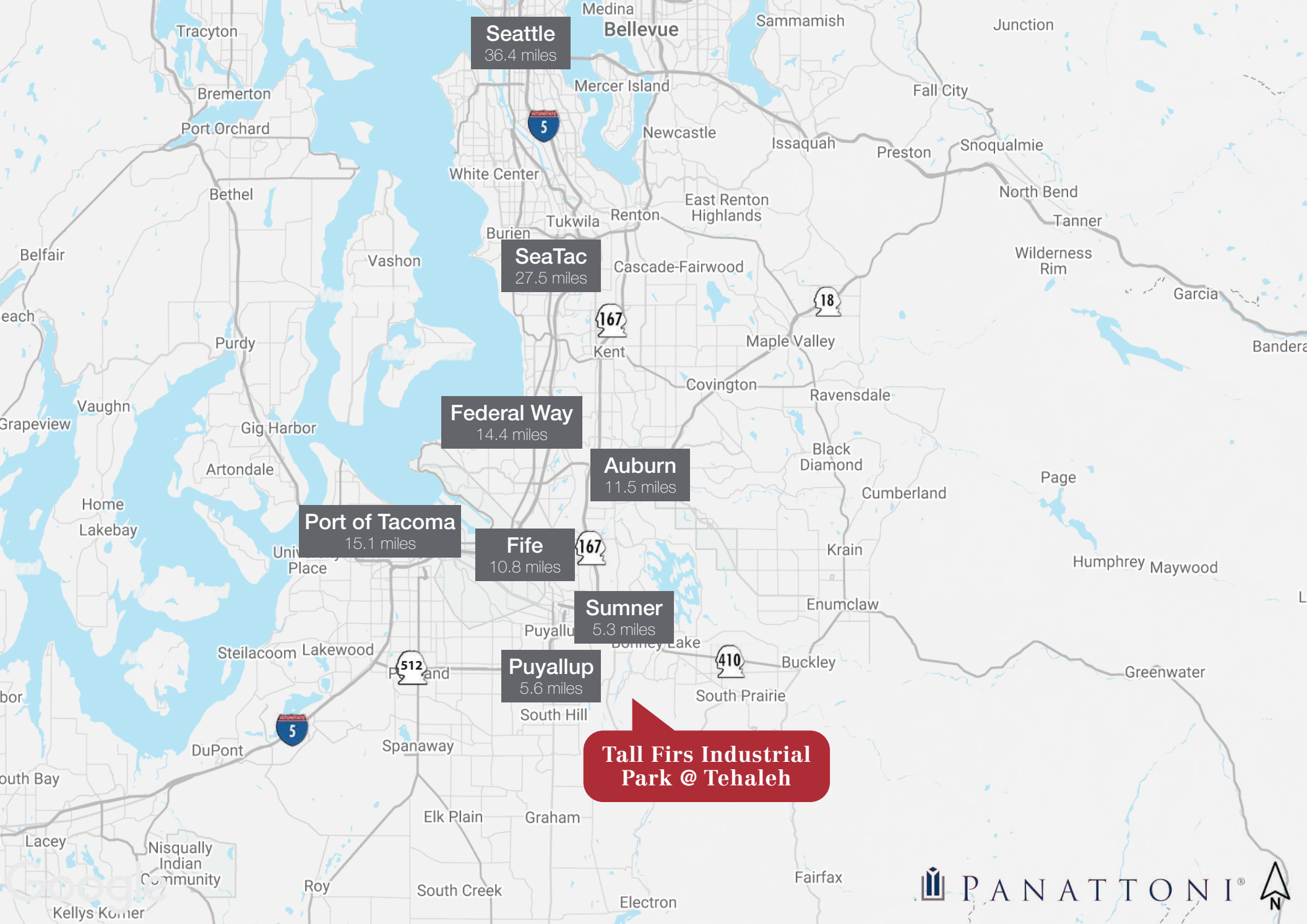
THE INFORMATION CONTAINED HEREIN HAS BEEN GIVEN TO US BY THE OWNER OF THE PROPERTY OR OTHER SOURCES WE DEEM RELIABLE, WE HAVE NO REASON TO DOUBT ITS ACCURACY, BUT WE DO NOT GUARANTEE IT. ALL INFORMATION SHOULD BE VERIFIED PRIOR TO PURCHASE OR LEASE.

# BUILDING A POTENTIAL SPACE CONFIGURATIONS



# BUILDING A POTENTIAL SPACE CONFIGURATIONS





THE INFORMATION CONTAINED HEREIN HAS BEEN GIVEN TO US BY THE OWNER OF THE PROPERTY OR OTHER SOURCES WE DEEM RELIABLE, WE HAVE NO REASON TO DOUBT ITS ACCURACY, BUT WE DO NOT GUARANTEE IT. ALL INFORMATION SHOULD BE VERIFIED PRIOR TO PURCHASE OR LEASE.

