

OFFICE SPACE FOR LEASE

LANE STREET BUILDING

1618 South Lane Street, Seattle WA



RAINIER PACIFIC
PROPERTIES

JONATHAN TRAN
JJTRAN@RAINIERPM.COM
O: 206-726-1144 EXT 3



AVAILABLE SUITE

SUITE

SF

204

1620

FEATURES

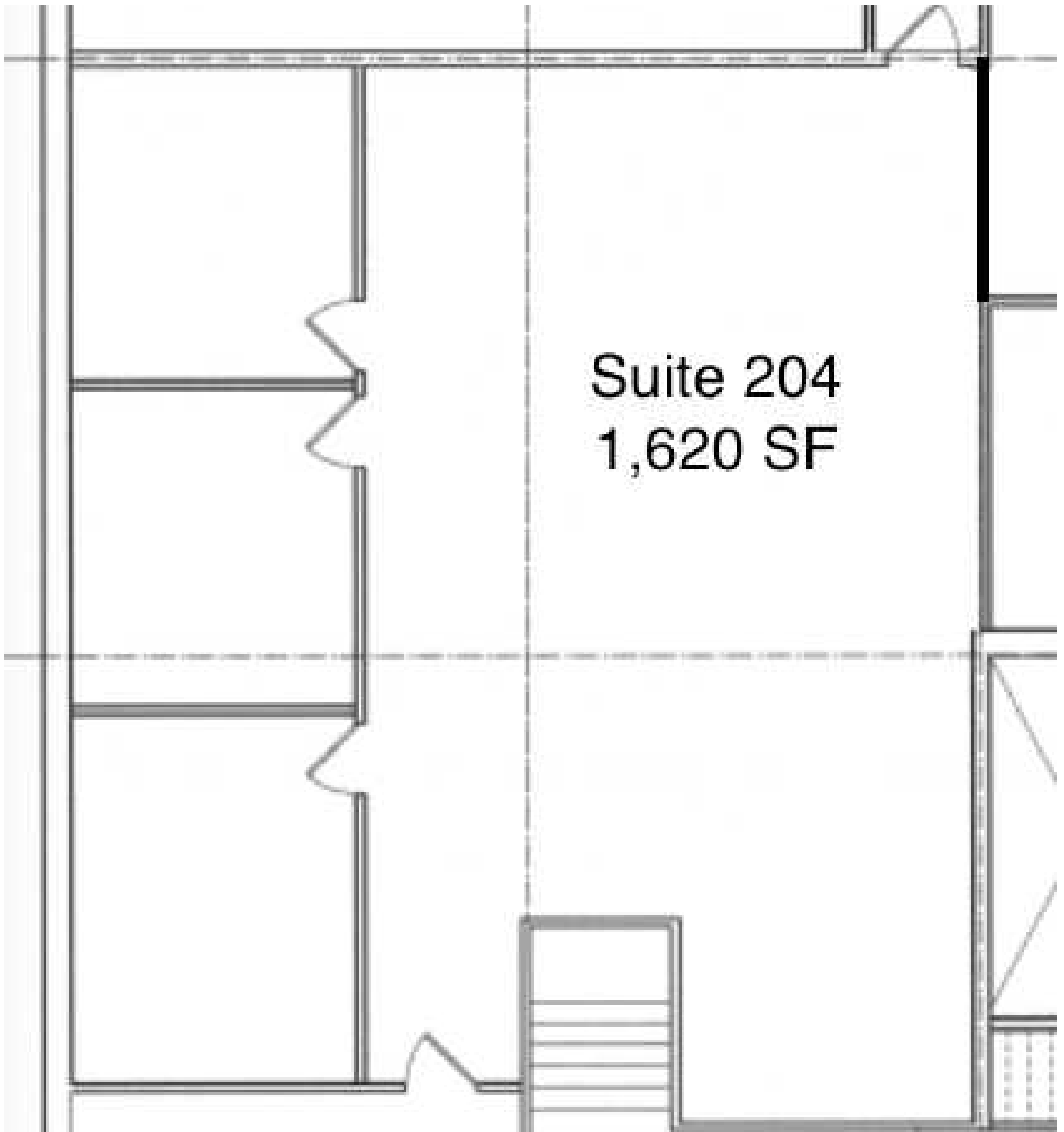
\$30.00/SF FULL SERVICE

Convenient location
off I-5 and I-90

2 Private offices and
open floorplan with
sink

Secure 24 hour
building access



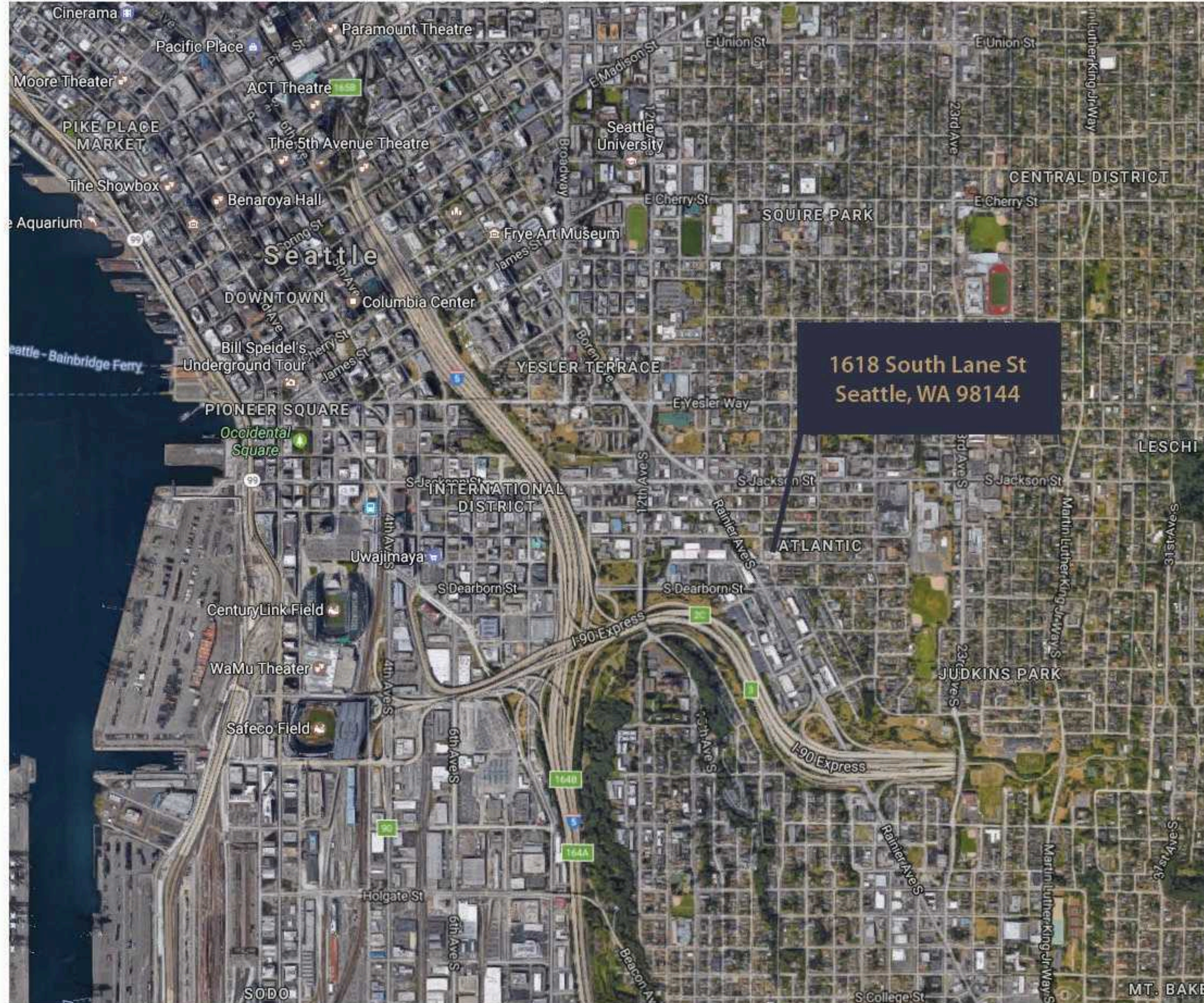


Suite 204
1,620 SF

This document has been prepared by Rainier Pacific Properties for advertising and general information only. There are no guarantees, representations or warranties of any kind, expressed or implied regarding the information including, but not limited to warranties of content, accuracy or reliability. Any interested party should undertake their own inquires as to the accuracy of the information. Rainier Pacific excludes unequivocally all inferred or implied terms, conditions or warranties arising out of this document and excludes all liability for loss and damages arising there from.

AVAILABLE NOW FOR LEASE

LANE STREET BUILDING



RAINIERPM.COM
1618 S LANE STREET
SUITE 203
SEATTLE, WA 98144
Office | (206) 726-1144
Fax | (206) 726-1155



Property tours available
by appointment.