

FOR LEASE

# THE DJC BUILDING

±6,914 SF Office Space  
Available for Lease in Seattle

83 COLUMBIA ST  
SEATTLE, WA 98104

KIDDER.COM

km Kidder Mathews

83 COLUMBIA ST

# THE IDEAL OFFICE LOCATION

*Convenient downtown location with easy access to Seattle waterfront and ferry terminal. Excellent option for employers looking to be at the heart of it all.*

AVAILABLE FOR LEASE

## SUITE 300,301,305

TOTAL SF	5,001 SF
SPACE	Lightly built-out space
USE	Perfect for tech groups, law firms, or any general office use
LOCATION	Property has water views

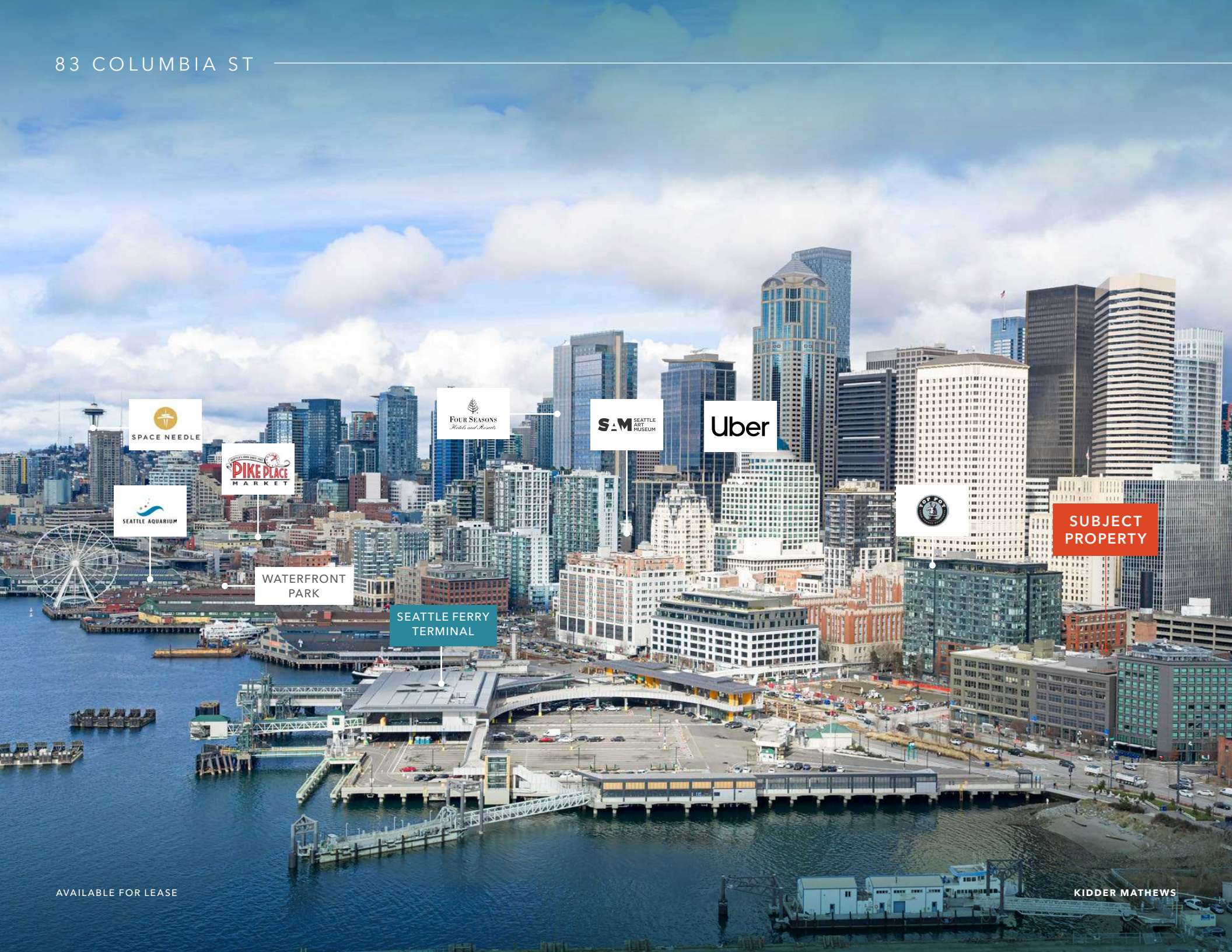
## SUITE 303

TOTAL SF	1,913 SF (Can be leased in addition to 5,001 SF)
AMENITIES	Elevator
ACCESS	Secure access
LOCATION	Right next to the waterfront and ferry terminal within close walking distance

**6,914 SF**  
TOTAL AVAILABLE

**\$19.50**  
GROSS

KIDDER MATHEWS



SPACE NEEDLE



PIKE PLACE MARKET



SEATTLE AQUARIUM

WATERFRONT PARK

SEATTLE FERRY TERMINAL



FOUR SEASONS  
*Hotels and Resorts*



SAM SEATTLE ART MUSEUM



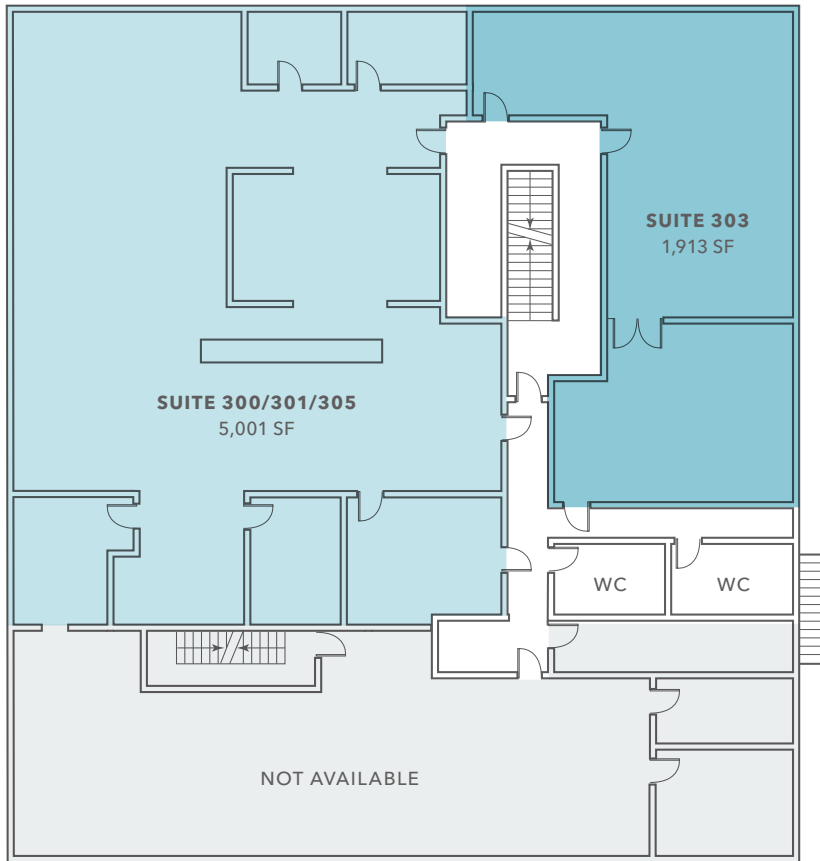
Uber



POST OFFICE

SUBJECT PROPERTY

# FLOOR PLAN



*6,914 SF*

TOTAL AVAILABLE

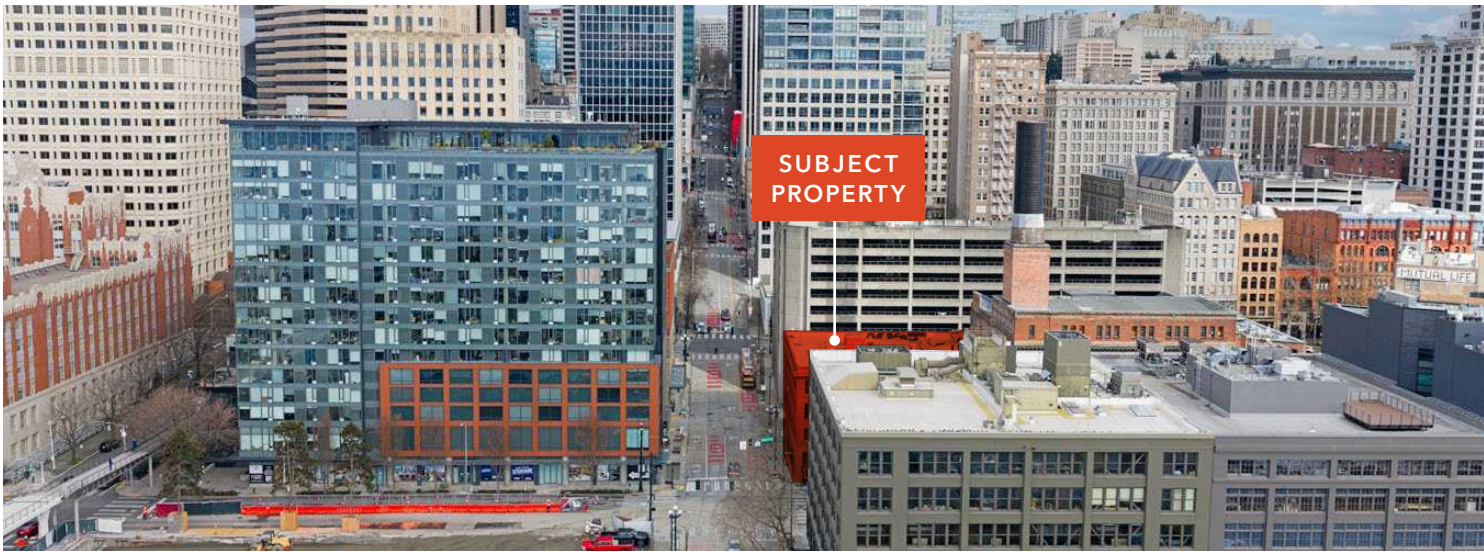
*\$19.50*

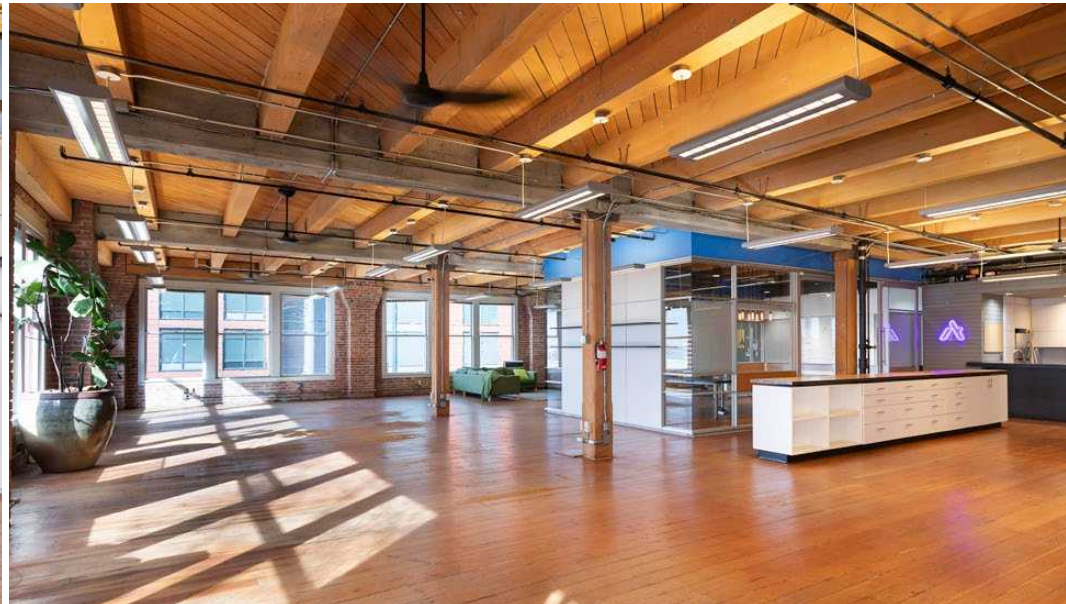
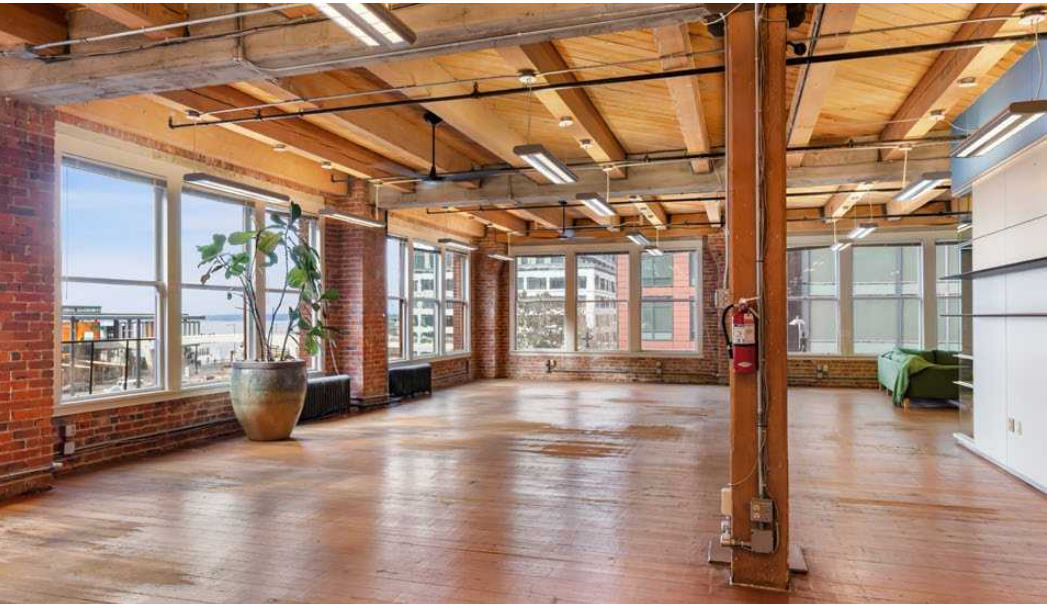
GROSS

*NOW*

AVAILABLE









*Exclusively listed by*

**STEVE PELLUER**

Senior Vice President | Shareholder  
206.914.3382  
steve.pelluer@kidder.com

**ZEKE PELLUER**

Associate Vice President  
425.614.0082  
zeke.pelluer@kidder.com

**KIDDER.COM**